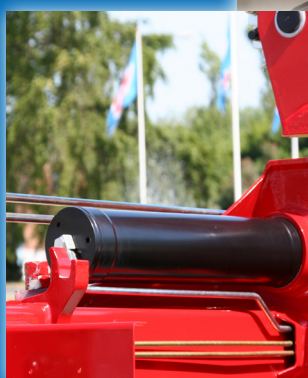


1220-K



- power to lift





LOADING GROUP HC1/B3		1220-K1	1220-K2	1220-K3	1220-K4	1220-K5
Type		KX				
TECHNICAL DATA						
Load moment	tm	11.7	11.4	11.0	10.7	10.5
Hydraulic reach	m	6.1	8.2	10.5	12.7	15.0
Slewing torque	kgm	1325				
Slewing angle	°	420				
Working pressure	bar	330				
Weight excl. stabilizer legs	kg	1115	1240	1350	1445	1530
Weight of stabilizer legs, standard	kg	170				
Pump performance	l/min	40				
Oil tank capacity, separate tank	l	65				
Power consumption	kW	22				
GEOMETRY						
Height above mounting surface	mm	2135				
Width, folded	mm	2350				
Length of crane, no extra valves	mm	747				
Length with 2 extra valves in internal hose reel	m	747				
Dual Power Plus link arm system		Basic				
Over-bending on crane	°	15				
Hook height 1 m from column	m	2.78	2.70	2.60	2.51	2.41
CONTROL MODE						
Manual operation of crane (JS)		Basic				
Manual operation of stabilizer functions		Basic				
Dual control of crane and stabilizer functions		Basic				
Crane operation from stand-up controls		Option				
Operation of the stabilizer legs up/down from the stand-up platform (HS)		Option				
Dual control of crane functions in the opposite side of HS		Option				
CONTROLS						
RCL 5300 Safety System		Basic				
Control valve type (-h) for crane operation		Basic				
Control valve type (-h) for operation of stabilizer legs and beams		Basic				
Electro-hydraulic speed adaptation system HDL-h		Basic				
OPTIONS: HYDRAULIC EQUIPMENT						
Oil cooler		Option				
High-pressure filter		Option				
Hydraulically extensible stabilizer beam		Option				
Multi-coupling for extra valves in hose guides		Option				
Extra valves in hose guides		Option				
Extra valves in hose reels internally in the jib extensions		Option				
2 or 4 available functions for operating the separate traverse		Option				
Biodegradable oil		Option				
74 l oil tank mounted on the crane		Option				
OTHER EQUIPMENT		1220-K1	1220-K2	1220-K3	1220-K4	1220-K5
Number of manual extensions			1	1	1	1
EVS stability monitoring system for manually operated cranes		Option				
Work light on crane		Option				
Stabilizer leg, 30°/60° manual swing-up, type R, 0.8-1.3 m		Option				
Manual swing-up stabilizer leg with gas spring		Option				
ECT 5320 remote control of all functions of the RCL box mounted at the stand-up platform (HS)		Option				
Footplate extended 100 mm or 200 mm		Option				



Manual Extensions

Manual extensions are protected by the RCL 5300 Safety System.



Minimum space requirements

Minimum space requirements give you more space on the truck body - and better economy.



Dual link arm system

The HMF dual Power Plus link arm system has an excellent lifting capacity at long reach and in high positions as well as it makes it possible to lift a heavy load close to the column.



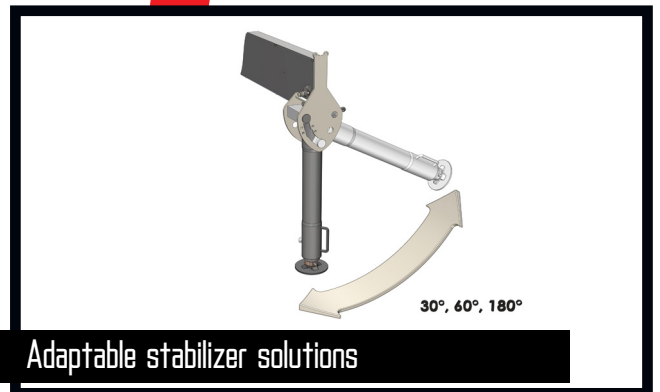
HMF RCL 5300

The system monitors all safety functions and shows the current load moment on the crane.



Stand-up control

With stand-up control, the crane operator has an increased overview of the crane movements. Especially when loading and unloading the platform body with e.g. grab or pallet fork, the crane operator has the full view of both the platform body and the working area. The crane operator is protected by the HSL or HSL-E safety system which prevents the crane from hitting the operator on the stand-up platform.



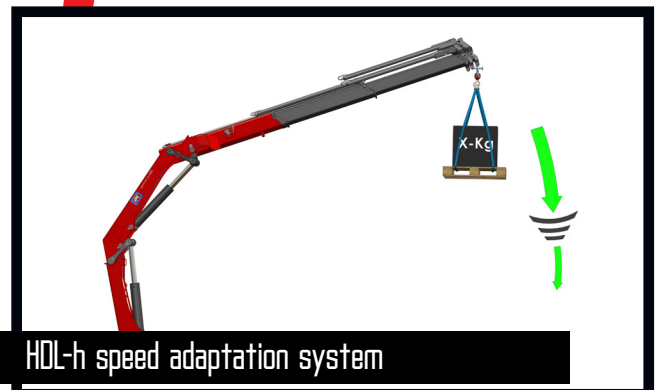
Adaptable stabilizer solutions

The stabilizer legs of the crane are to ensure stability - however they still have to be sturdy, easy to handle and must not take up too much space when not in use. Therefore you can choose between fixed stabilizer legs, manual swing-up stabilizer legs to 180° with gas spring or fully hydraulic swing-up stabilizer legs to 180°. Stabilizer beams can be freely selected as hydraulically extensible or manually extensible, also in connection with the sophisticated EVS stability monitoring.



Extra valves with variation

A well-known and usual hose routing to the end of the extensions means that 1 or 2 extra valves are fed in sturdy hose guides alongside the jib extension system. If further efficient protection of the hoses is required, 1 or 2 extra valves can be fed in internal hose reels and lie particularly well protected. In case of more than 6 hydraulic extensions or a reach of approx. 17 m, 1 or 2 extra valves will be fed in external, smooth-running and efficient hose reels.



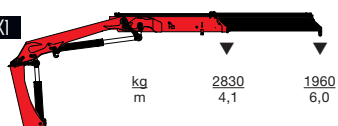
HDL-h speed adaptation system

HDL-h is an electro-hydraulic system which automatically adapts the crane speed to the working situation. You thus avoid big and sudden stress, which may damage the crane or influence the stability of the vehicle in an unfavourable way. The RCL 5300 is monitoring which movements that have to be adapted.

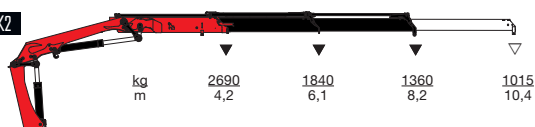


- power to lift

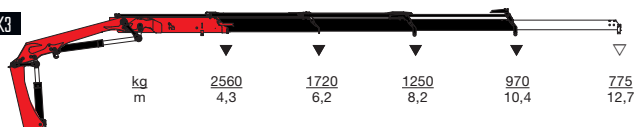
HMF 1220-K1



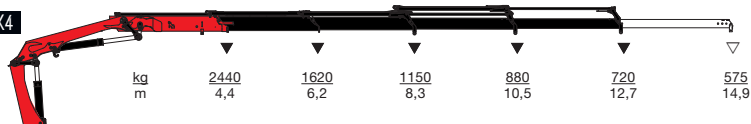
HMF 1220-K2



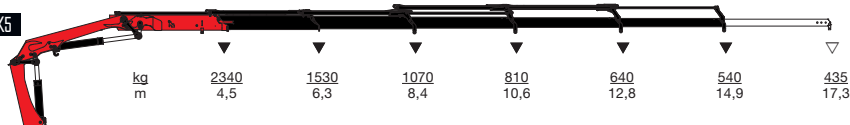
HMF 1220-K3



HMF 1220-K4



HMF 1220-K5



▼ Lifting capacity without manual extensions
▽ Lifting capacity with manual extensions



- power to lift
HMF Group A/S

Oddervej 200 · DK-8270 Højbjerg
Tel.: +45 8627 0800 · Fax: +45 8627 0744 · info@hmf.dk

www.hmf.dk