

We build a better future



*Photo may include optional equipment.

14/16/20/25BRJ-7 AC

Hyundai Reach Trucks - Environmental-Friendly

Superior Power & Optimal Performance

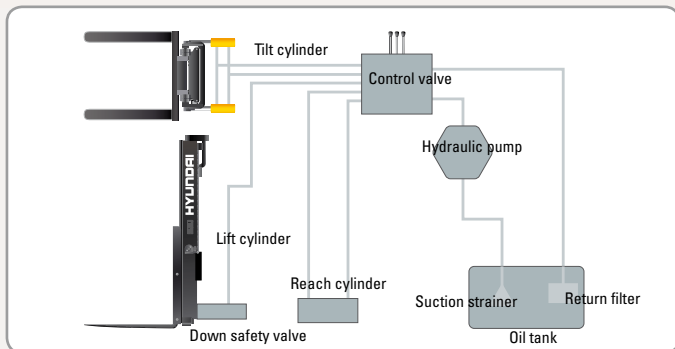
Smooth running, efficient and ergonomically designed, 14/16/20/25BRJ-7 series are built to meet your needs.



*Photo may include optional equipment.

Excellent Grade-ability & Anti-Roll Back

Three wheels configuration and a powerful drive motor provide for exceptional stability and excellent grade-ability. When departing on a slope, an anti-roll back function ensures operational safety.



Minimum turning radius

For narrow aisle operation, the compact design guarantees work efficiency and maximum space utilization.

State-of-the-art Hydraulic System

The latest designed, large-capacity hydraulic system including a low-noise control valve shortens reaction time during operation and improves both efficiency and durability.



Automatic Center Position at Starting

When starting your reach truck, the drive wheel of the truck will automatically turn to center position.



FWD/REV Switch

The driving direction can be controlled easily with the convenient position of the Forward/Reverse switch.



Versatile Reach Stroke

The multi-roller reach assembly provides smooth, well controlled and safe load handling, extended reach allows unsurpassed versatility.



Electro-Magnetic Brake

Increased brake performance and controllability by electromagnetic wheel brakes.



*Photo may include optional equipment

High Technology ZAPI Controller

The efficient, almost noiseless, 8Khz (high frequency) controller provides smooth operation, fault detection, protection for low & high voltage and overheating.

Energy Efficiency

H(High) mode : 100%
N(Normal) mode : 110%
E(Economic) mode : 120%



Drive Motor & Pump Motor

Efficient AC motors are guaranteeing reliability; an optimized motor design provides low noise levels. Temperature sensors inside are increasing the motor life.



*Photo may include optional equipment



Self - diagnosis LCD Monitor

The LCD monitor has a back-light system to provide a clear view of the system's operation in all circumstances. The monitor provides information about operation errors, system faults, battery level, hour meter plus other functions.

Cup Holder, Console Box & Storage Space

Additional storage spaces are located inside the operating space for operator's convenience.





New Designed Steer Control Handle

A new designed steer control, coupled with our new Electric Power Steering control, gives the operator an exceptional smooth and controlled steering.



Proportional Fingertip Control

Minimal operator effort is required for precise, safe and productive control. The operator can control his truck very easily with fingertip controls.

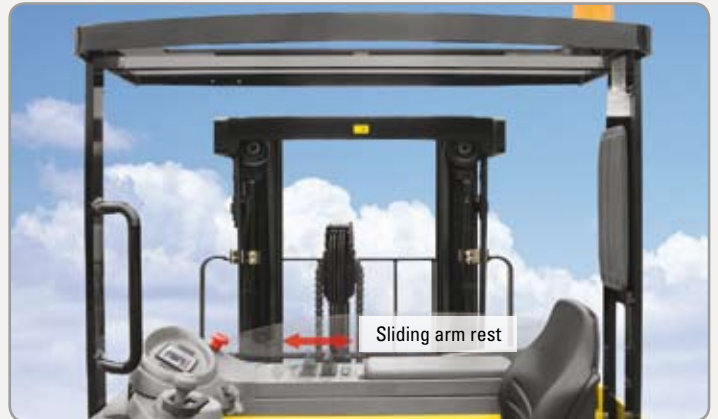


Camera & LCD monitor (Option)

A camera installed on the forks provides the operator with excellent visibility. (Recommended for masts taller than TF700)

Comfortable Operation

A design based on human engineering relieves fatigue and increases operator's efficiency.



New High Visibility for Safe Operation

The operator is able to work with increased safety and accuracy due to a wider view.



Comfortable Operator Environment

A straightforward designed full suspension seat is fully adjustable for an optimal work position, reducing operator fatigue.



Strong Overhead Guard

The safety overhead guard meets EEC and ANSI regulations and protects the operator during hazardous jobs.



Headrest Cushion Pad

A large cushion pad is positioned for operator safety and comfort.



Non Slip Floor Mat

A heavy non-slip floor mat with vibration dampers reduces operator fatigue and increases productivity.



Brake and Accelerator Pedal

The balanced design of the pedals (with replaceable covers) is offering high controllability and a convenient working position.

Durability, Easy Maintenance

An ideal arrangement of components ensures easy access and convenience for maintenance.



DC-DC Converter



Concentrated Fuse Box for Easy Inspection



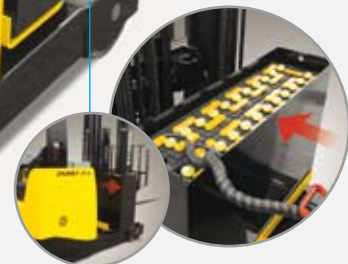
Reliable MOSFET Type Controller



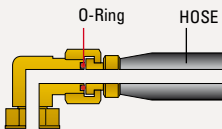
Battery Disconnect Lever & Emergency Switch



Hydraulic Filter



Easy Battery Replacement



ORFS (O-Ring Face Seal)

ORFS type hose prevents hydraulic oil leakage.

*Photo may include optional equipment.

Optional equipment

- Different masts (up to 12 m)
- Different forks
- Beacon lamp (Amber, Blue, Red)
- Safety switch-mast (Fork & Traction speed reduction over 3m height)
- Fork camera (Mast TF700 ~ TF1200)
- Cold storage
- Larger battery compartment for higher battery capacity

Mast Specifications (14/16BRJ-7)

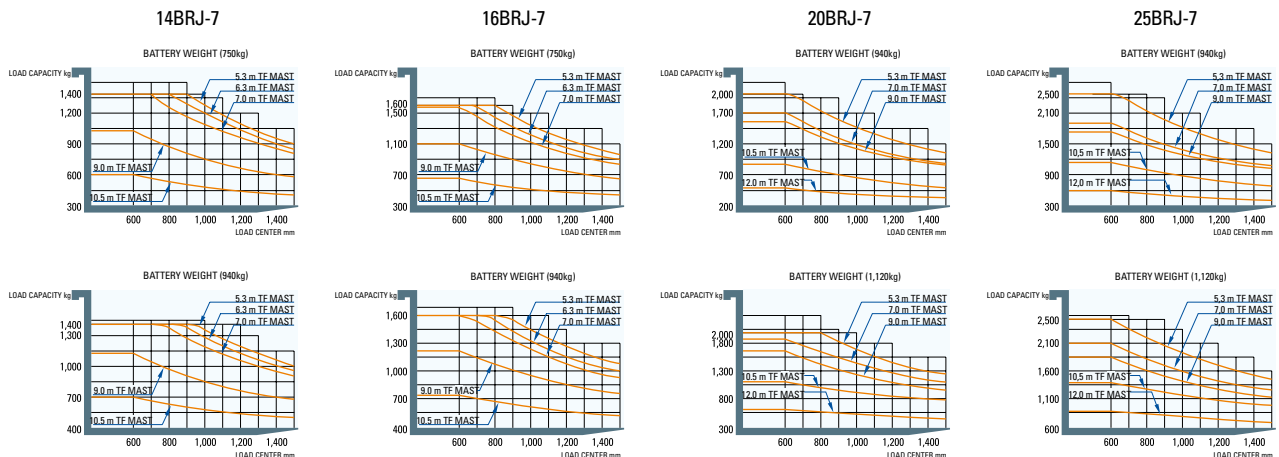
Mast Type		Maximum Fork Height	Overall Height (Lowered)	Overall Height (Extended mast)		Free lift Height		Tilt Angle		Truck Weight (Unloaded)	
				With Load Backrest	Without Load Backrest	With Load Backrest	Without Load Backrest	Fwd	Bwd	14BRJ-7	16BRJ-7
		14/16BRJ-7	14/16BRJ-7	14/16BRJ-7	14/16BRJ-7	14/16BRJ-7	14/16BRJ-7	14/16BRJ-7	deg	deg	kg
		mm	mm	mm	mm	mm	mm				
3-STAGE FULL FREE LIFT	TF430	4,335	2,023	5,369	4,841	989	1,395	2	5	2,873	2,975
	TF470	4,735	2,173	5,769	5,241	1,139	1,545	2	5	2,904	3,006
	*TF530	5,306	2,362	6,335	5,812	1,333	1,739	2	5	2,946	3,048
	TF570	5,701	2,495	6,735	6,207	1,461	1,867	2	5	2,974	3,076
	TF630	6,301	2,720	7,335	6,807	1,686	2,092	2	5	3,021	3,123
	TF670	6,107	2,853	7,735	7,207	1,819	2,225	2	5	3,099	3,201
	TF700	7,001	2,953	8,035	7,507	1,919	2,325	2	5	3,121	3,223
	TF750	7,501	3,120	8,535	8,007	2,086	2,492	2	5	3,157	3,259
	TF800	8,001	3,320	9,035	8,507	2,286	2,692	2	5	3,198	3,300
	TF850	8,501	3,487	9,535	9,007	2,453	2,859	2	5	3,282	3,384
	TF900	9,001	3,654	10,035	9,507	2,620	3,026	2	5	3,319	3,421
	TF950	9,501	3,821	10,535	10,007	2,787	3,193	2	5	3,355	3,457
	TF1000	10,001	4,021	11,035	10,507	2,987	3,393	2	5	3,396	3,498
	TF1050	10,501	4,188	11,535	11,007	3,169	3,575	2	5	3,421	3,523

Mast Specifications (20/25BRJ-7)

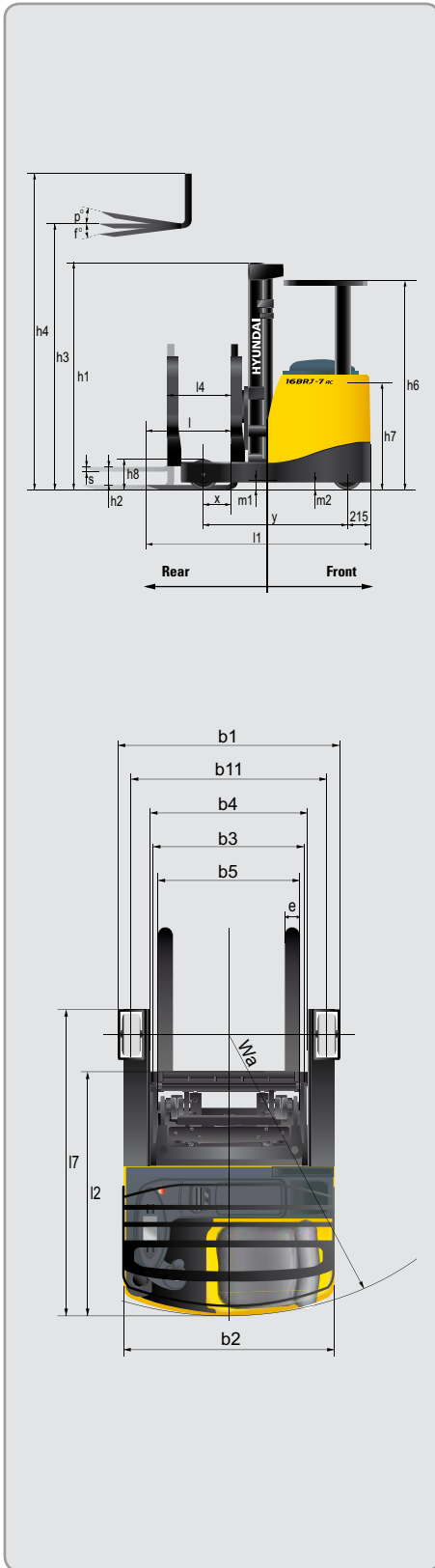
Mast Type		Maximum Fork Height	Overall Height (Lowered)	Overall Height (Extended mast)		Free lift Height		Tilt Angle		Truck Weight (Unloaded)	
				With Load Backrest	Without Load Backrest	With Load Backrest	Without Load Backrest	Fwd	Bwd	20BRJ-7	25BRJ-7
		20/25BRJ-7	20/25BRJ-7	20/25BRJ-7	20/25BRJ-7	20/25BRJ-7	20/25BRJ-7	20/25BRJ-7	deg	deg	kg
		mm	mm	mm	mm	mm	mm				
3-STAGE FULL FREE LIFT	TF430	4,305	2,050	5,406	4,996	949	1,359	2	5	3,437	3,633
	TF470	4,705	2,200	5,806	5,396	1,099	1,509	2	5	3,470	3,667
	*TF530	5,305	2,400	6,406	5,996	1,299	1,709	2	5	3,514	3,711
	TF570	5,705	2,533	6,806	6,396	1,432	1,842	2	5	3,545	3,741
	TF630	6,305	2,758	7,406	6,996	1,657	2,067	2	5	3,653	3,850
	TF670	6,705	2,891	7,806	7,396	1,790	2,200	2	5	3,696	3,893
	TF700	7,005	2,991	8,106	7,696	1,890	2,300	2	5	3,718	3,915
	TF750	7,505	3,158	8,606	8,196	2,057	2,467	2	5	3,756	3,953
	TF800	8,005	3,350	9,106	8,696	2,249	2,659	2	5	3,806	4,002
	TF850	8,507	3,517	9,608	9,198	2,416	2,826	2	5	3,914	4,111
	TF900	9,007	3,684	10,108	9,698	2,583	2,993	2	5	3,952	4,149
	TF950	9,509	3,851	10,610	10,200	2,750	3,160	2	5	3,990	4,186
	TF1000	10,007	4,043	11,108	10,698	2,942	3,352	2	5	4,033	4,230
	TF1050	10,507	4,210	10,608	11,198	3,109	3,519	2	5	4,071	4,268
	TF1100	11,007	4,377	12,108	11,698	3,276	3,686	2	5	4,109	4,306
	TF1150	11,507	4,569	12,608	12,198	3,468	3,878	2	5	4,152	4,349
	TF1200	12,007	4,736	13,108	12,698	3,635	4,045	2	5	4,190	4,387

*STANDARD

Load Capacity



Dimensions



Specifications

■ Identification

1.1	Manufacturer	HYUNDAI	HYUNDAI	HYUNDAI	HYUNDAI	
1.2	Type	14BRJ-7	16BRJ-7	20BRJ-7	25BRJ-7	
1.3	Drive: electric (battery or mains), diesel, petrol, fuel gas, manual	electric	electric	electric	electric	
1.4	Type of operation: hand, pedestrian, standing, seated, order-picker	seated	seated	seated	seated	
1.5	Load capacity (standard)	Q (t)	1.4	1.6	2	2.5
1.6	Load center distance	c (mm)	600	600	600	600
1.8	Load distance, center of load wheels to forks	x (mm)	333	383	340	490
1.9	Wheelbase	y (mm)	1,410	1,406	1,520	1,670

■ Weights

2.1	Service weight	kg	2,946	3,048	3,515	3,711
2.3	Axle loading, reached in, unloaded front/rear	kg	1,762 / 1,183	1,879 / 1,168	2,115 / 1,400	2,356 / 1,355
2.4	Axle loading, reached out, loaded front/rear	kg	576 / 3,770	585 / 4,063	593 / 4,922	604 / 5,607
2.5	Axle loading, reached in, loaded front/rear	kg	1,497 / 2,849	1,641 / 3,006	1,772 / 3,742	2,191 / 4,020

■ Wheels, Chassis

3.1	Tires: solid rubber, superelastic, pneumatic, polyurethane	PE	PE	PE	PE	
3.2	Tires size, front (Ø x width)	305 x 140	305 x 140	345 x 140	345 x 140	
3.3	Tires size, rear (Ø x width)	285 x 100	285 x 100	355 x 106	355 x 135	
3.5	Wheels, number front / rear (X= driven wheels)	1 x / 2	1 x / 2	1 x / 2	1 x / 2	
3.7	Track width, rear (load wheels)	b11 (mm)	1,149	1,149	1,155	1,184

■ Basic dimensions

4.1	Mast/fork carriage tilt forward/backward	degrees	2 / 5	2 / 5	2 / 5	2 / 5
4.2	Lowered mast height (standard)	h1 (mm)	2,362	2,362	2,400	2,400
4.3	Free lift	h2 (mm)	1,739	1,739	1,709	1,709
4.4	Lift height (standard)	h3 (mm)	5,306	5,306	5,305	5,305
4.5	Extended mast height (standard)	h4 (mm)	5,812	5,812	5,996	5,996
4.7	Overhead load guard (cab) height	h6 (mm)	2,120	2,120	2,120	2,120
4.8	Seat height / standing height	h7 (mm)	952	952	970	970
4.10	Height of supporting legs	h8 (mm)	253	253	271	271
4.19	Overall length (reached in, std. forks)	l1 (mm)	2,192	2,192	2,445	2,445
4.20	Length to face of forks (reached in)	l2 (mm)	1,292	1,292	1,395	1,395
4.21	Overall width (rear/front)	b1/b2 (mm)	1,279 / 1,270	1,279 / 1,270	1,291 / 1,270	1,349 / 1,270
4.22	Fork dimensions (hook type) L x W x T	L x W x T	1,200 x 100 x 40	1,200 x 100 x 40	1,200 x 100 x 45	1,200 x 122 x 45
4.23	Fork carriage ISO 2328, class / type A, B		2B	2B	2B	2B
4.24	Fork carriage width	b3 (mm)	948	948	948	948
4.25	Width over forks	b5 (mm)	729	729	729	729
4.26	Distance between supporting legs	b4 (mm)	952	952	952	952
4.28	Reach stroke	l4 (mm)	528	578	555	705
4.31	Ground clearance, loaded, under mast	m1 (mm)	105	105	123	123
4.32	Ground clearance, centre of wheelbase	m2 (mm)	75	75	93	93
4.33	Aisle width for pallets 1000 x 1200 crossways (L x W)	Ast (mm)	2,722	2,736	2,827	2,872
4.34	Aisle width for pallets 800 x 1200 lengthways (W x L)	Ast (mm)	2,780	2,785	2,883	2,900
4.35	Turning radius	Wa (mm)	1,625	1,675	1,735	1,885
4.37	Overall length (without forks)	l7 (mm)	1,810	1,860	1,980	2,130

■ Performance data

5.1	Travel speed, unloaded	km/h	14	14	14	14
5.2	Lift speed, loaded/unloaded	mm/s	370 / 580	370 / 580	300 / 470	300 / 470
5.3	Lowering speed, loaded/unloaded	mm/s	500 / 450	500 / 450	500 / 450	500 / 450
5.6	Drawbar pull, loaded/unloaded	Kgf	615 / 653	588 / 624	763 / 810	776 / 830
5.8	Gradient performance, loaded/unloaded	%	13 / 18	12 / 18	12 / 19	11 / 18
5.9	Acceleration time, loaded/unloaded (10m)	S	5.0	5.1	5.3	5.5
5.10	Service brake		electric	electric	electric	electric

■ E-Motor

6.1	Drive motor rating S2 60min (80V)	kW	6.8	6.8	6.8	6.8
6.2	Pump motor rating S3-15% (80V)	kW	15.8	15.8	15.8	15.8
6.3	Battery acc. to DIN 43531/ 35/ 36 A, B, C, no	V/Ah	DIN43531	DIN43531	DIN43531	DIN43531
6.4	Battery Voltage / nominal capacity K5 (80V)	V/Ah	48 / 420	48 / 420	48 / 560	48 / 560
6.5	Battery Weight (min)	kg	750	750	940	940
	Battery compartment dimensions (L/W/H)	mm	1,223 / 283 / 787	1,223 / 283 / 787	1,223 / 353 / 787	1,223 / 353 / 787

■ Other details

8.1	Type of drive control		AC Mosfet	AC Mosfet	AC Mosfet	AC Mosfet
8.2	Operating pressure (attachments)	bar	190	190	190	190
8.3	Hydraulic oil flow (attachments)	l/min	25	25	25	25

Contact your Hyundai dealer for more information. The machine shown may vary according to International standards. All US measurement rounded off to nearest pounds or inches. Materials and specifications are subject to change without notice.



Head Office (Sales Office)
1 JEONHA-DONG, DONG-GU, ULSAN, KOREA TEL: (82) 52-202-7970, 7729, 0971 FAX: (82) 52-202-7979, 7720

U.S. Operation: Hyundai Construction Equipment U.S.A., Inc.
955 ESTES AVENUE, ELK GROVE VILLAGE, IL. 60007, U.S.A. TEL: (1) 847-437-3333 FAX: (1) 847-437-3574

European Operation: Hyundai Heavy Industries Europe N.V.
VOSSENDAAL 11, 2440 GEEL, BELGIUM TEL: (32) 14-56-2200 FAX: (32) 14-59-3405

India Operation: Hyundai Construction Equipment India Pvt., Ltd.
PLOT NO.A-2, CHAKAN INDUSTRIAL AREA, VILL.- KHALUMBRE. TALUK.- KHED., DIST.- PUNE 410 501, INDIA
TEL: (91) 21-3530-1700 FAX: (91) 21-3530-1712

PLEASE CONTACT