



Wheel loaders Telehandlers

2070 CX LP, 3070 CX LP

2070 CX LP T, 3070 CX LP T



Powerful at low heights



Our low-height models for special applications

Weidemann's LP special application series has been purpose designed for use at low heights while still offering enough power. Thanks to their modular design, all models can be configured to meet all variation and extension options - including ROPS bar, overhead guard, cabin, lifting arm or telescopic arm - to ensure you are best equipped to perform all tasks. These loaders are used, in particular, in traditional agriculture, poultry farms, mining and in industry.

Working comfort already included

The seats of our loaders are ergonomically designed: prominently displayed instruments, an adjustable driver's seat and a multi-function control stalk for single-handed operation. The solid hydraulic travelling drive ensures an infinitely variable start without jolt, to make you move even in the most difficult ground conditions.

This way, we offer you a comfortable working environment helping you to care for your health and to make your daily operations an easy task.

Security has priority

Needless to say, that all loaders comply with the EU-safety regulations. We even take it a step further: Our loaders have properties that go far beyond these requirements.

With our security concept we have created a wide-range solution to ensure your work under secure and reliable conditions.

Uncompromising quality

In everything, from the engine and the accessories to the working tools we demonstrate our uncompromising trust in high-quality materials. The technically mature individual components and their perfect manufacturing fulfil the highest quality standards. These standards ensure the high durability and cost-effectiveness of our loaders giving them a high resale value.

Quality also means that we consider ourselves your partners offering both service and advice via our extended network of dealers and service staff.

Always reaching high – achieve more with enormous lifting heights



2070 CX LP



2070 CX LP T



3070 CX LP



3070 CX LP T

A big variety of different models

Weidemann offers you machines featuring different equipment types. Depending on your current task the engine, the driver's cab and the tyre equipment can be set up according to your individual needs. Additionally, we offer a huge range of mounting equipment so as to make sure that your machine is perfectly geared to your individual demands.

Comfortable workplace

At Weidemann operator convenience begins long before you even start your loader. Via the LowPosition climb you can safely and comfortably access your workplace from both sides. The driver's cab meets all requirements of an ergonomically designed workplace. The steering column can be adjusted individually and the comfortable seat can be adapted to your body size and weight.

Good stability

Because of their lower centre of gravity our loaders are secure and always have a good standing even under difficult conditions. This means that even when working on inclined or uneven territory you will always be firmly in touch with the ground and able to operate reliably.



Amazing lifting heights

Even though our loaders have a compact and low-level design they can reach enormous lift heights. Even transport vehicles with high loading sills can be loaded without problems. The bended lifting arm and the heavy duty telescopic arm are buckling resistant and ensure precise operation even when working with heavy loads. You are always provided with an excellent view of the working tool even when the swingarm is raised and the telescopic arm is extended.

Robust kinematics for swingarm and telehandler

With the amply dimensioned cylinders the loader features a dump function with an enormous breaking load. The entire kinematics system has been designed in such a way to facilitate the quick loading and unloading of your cargo. As a result your working cycles will be shorter and you will be able to complete your tasks more effectively.

Sophisticated accessories

With their standard hydraulic locking system our loaders are extremely flexible when it comes to carrying out a great variety of different tasks. That will make your work easier and more comfortable. The accessories that can be changed without getting off turns your loader into a genuine multi purpose machine.

Sophisticated to the very last detail



Ergonomically designed workplace

We want you to feel good at work. This is why our loaders are equipped with an ergonomically designed workplace. The generous legroom, the clearly arranged instrument panel and the comfortable driver's seat ensure a relaxed working environment at any time.



Easy and comfortable

Weidemann has developed a sophisticated steering mechanism for you. With the ergonomically designed multi-function control stalk you can control the driving directions and the complete kinematics with one hand only. In this way you will not only be able to work precisely but also fatigue-free.



Practical visor

The adjustable sun visor protects you from the glare from low-angle sunlight. The visor can be adjusted in stages according to the position of the sun. This prevents the operator from being blinded by the sun ensuring he can always see the tool and the environment.



Folding modules

Weidemann ensures quick and easy access to the engine, the hydraulic and the electrical system. You can perform standard maintenance and control works on the spot yourself so that your machine will be immediately fit for operation again. This saves costs and increases the life cycle of your machine.



Perfected articulated steering

Our articulated steering system ensures that the wheels of the loader will be firmly in touch with the ground and extremely flexible in any kind of territory. As the front and the rear end of the vehicle are swinging independently, they provide an optimal traction and can thus better respond to uneven territory.



Combined brake-inch pedal

We have combined mechanical and hydraulic braking (inching) in a single pedal to help keep the wear on the service brake to a minimum. The sophisticated combination of hydraulic and mechanical braking systems enables the vehicle to be manoeuvred safely and precisely even when transporting high loads.



Protective rear weight plate

Our loaders feature a massive protruding rear weight plate. This ensures that the machines have a high stability even when high loads are moved. By this overhand the entire rear – including the buried rear lights – is protected against damages.



Maximum thrust

We have designed the compact drive train with the planetary axle in such a way that the traction is directly transmitted to the hub of the wheel. The differential lock which is fully switchable offers you maximum thrust when needed and keeps tyre wear to a minimum (it is switched off during normal driving operation).

Technical Data

	2070 CX50 LP	2070 CX80 LP	3070 CX60 LP	3070 CX80 LP		2070 CX50 LP T	2070 CX80 LP T	3070 CX60 LP T	3070 CX80 LP T
Engine data									
Manufacturer	Perkins	Deutz	Deutz	Deutz		Perkins	Deutz	Deutz	Deutz
Engine type	404 C-22	BF4M 2011	F4M 2011	BF4M 2011		404 C-22	BF4M 2011	F4M 2011	BF4M 2011
Cylinder	4	4	4	4		4	4	4	4
Max. power (kW)	35.7	56	42.5	56		35.7	56	42.5	56
At rpm	2,600	2,300	2,300	2,300		2,600	2,300	2,300	2,300
Capacity (cc)	2,216	3,108	3,108	3,108		2,216	3,108	3,108	3,108
Cooling	Water	Medium	Medium	Medium		Water	Medium	Medium	Medium
Electrical system									
Operating voltage	12 V	12 V	12 V	12 V		12 V	12 V	12 V	12 V
Battery	77 Ah	77 Ah	77 Ah	77 Ah		77 Ah	77 Ah	77 Ah	77 Ah
Generator	65 A	55 A	55 A	55 A		65 A	55 A	55 A	55 A
Weights									
Operating weight (standard)	3,130	3,180	4,190	4,190		3,560	3,680	4,730	4,730
Lifting force max. (daN)	3,706	3,706	4,136	4,136		4,465	4,465	5,832	5,832
Tipping loads in bucket (according to ISO 8313)						retd. / extd.	retd. / extd.	retd. / extd.	retd. / extd.
Lift frame horizontal / machine straight	2,112	2,250	2,782	2,782		1,939 / 1,024	2,055 / 1,099	2,634 / 1,372	2,634 / 1,372
Lift frame horizontal / machine articulated	1,697	1,836	2,257	2,257		1,568 / 793	1,676 / 870	2,148 / 1,113	2,148 / 1,113
Tipping loads in pallet fork (according to ISO 8313)						retd. / extd.	retd. / extd.	retd. / extd.	retd. / extd.
Lift frame horizontal / machine straight	1,924	2,013	2,898	2,898		1,696 / 982	1,785 / 1,056	2,380 / 1,352	2,380 / 1,352
Lift frame horizontal / machine articulated	1,586	1,643	2,381	2,381		1,391 / 788	1,499 / 857	2,010 / 1,124	2,010 / 1,124
Payload (according to ISO 5998)*	849	918	1,129	1,129		784 / 396	838 / 435	1,074 / 556	1,074 / 556
Load carrying capacity (according to EN 474-3)**	952	986	1,429	1,429		833 / 472	898 / 513	1,204 / 673	1,204 / 673
Vehicle data									
Driving speed (km/h)	0-20	0-20	0-20	0-20		0-20	0-20	0-20	0-20
Capacity of fuel tank (l)	55	55	90	90		55	55	90	90
Hydraulic oil (l)	65	65	80	80		65	65	80	80
Hydraulic system									
Hydraulic driving									
Output (l/min)	104	128.8	128.8	128.8		104	128.8	128.8	128.8
Working pressure (bar)	450	445	445	445		450	445	445	445
Hydraulic operation									
Output (l/min)	49.4	51.75	64.4	64.4		49.4	51.75	64.4	64.4
Working pressure (bar)	210	210	230	230		235	235	235	235
Hydraulic steering									
Output (l/min)	49.4	51.75	64.4	64.4		49.4	51.75	64.4	64.4
Working pressure (bar)	190	190	190	190		190	190	190	190

* Payload is the capacity that may be moved with the bucket, according to the specifications of the manufacturer.

** Load carrying capacity is the capacity that may be moved with the pallet fork, according to the specifications of the manufacturer.

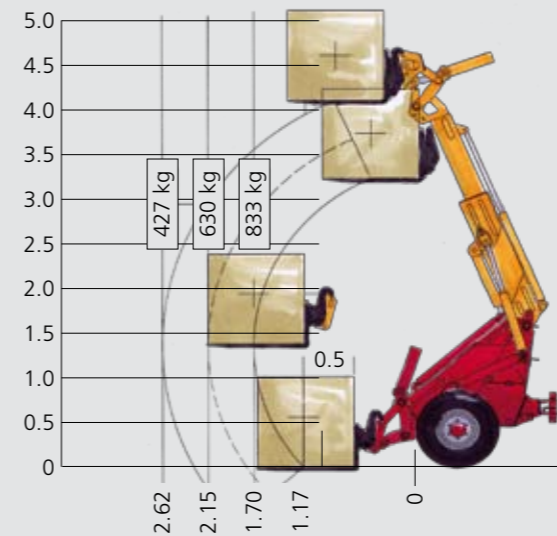
Standard equipment

Standard equipment	2070 CX LP	2070 CX LP T	3070 CX LP	3070 CX LP T
Drive				
Hydrostatic four-wheel drive	•	•	•	•
Planetary axle PA1200	•	•	--	--
Planetary axle PA1400	--	--	•	•
Pto gear and drive shaft	•	•	•	•
Tyres 11.5/80 - 15.3 AS ET40 including turning rims	•	•	--	--
Tyres 11.5/80 - 15.3 AS ET80 including turning rims	--	--	•	•
Differential lock 100 %, can be switched between electrical and hydraulic at the front and rear axles	•	•	•	•
Hydraulics				
Single-hand control with floating position to the right next to the seat	•	•	•	•
Multi-function control stalk	•	•	•	•
Unpressurised return line	--	•	--	•
Hydraulic oil cooler (combined cooler)	•	•	•	•
Front hydro connection DN12	•	•	•	•
Hydraulic rapid-change system for provided tools	•	•	•	•
Lowering brake valves	--	•	--	•
All-hydraulic articulated steering	•	•	•	•
Driver's cab				
Folding ROPS bar	•	--	•	--
Comfortable seat with safety belt, completely spring-mounted	•	•	•	•
Adjustable steering column	•	•	•	•
Work lamps at the front and rear	•	•	•	•
Fuel gauge	•	•	•	•
Engine-hour indicator	•	•	•	•
Overhead guard	--	•	--	•
Windscreen wipers at the front and rear	--	•	--	•
4 work lamps at the overhead guard	--	•	--	•
Other				
Battery cut-off switch	•	•	•	•
Electrical connection at the front	--	•	--	•

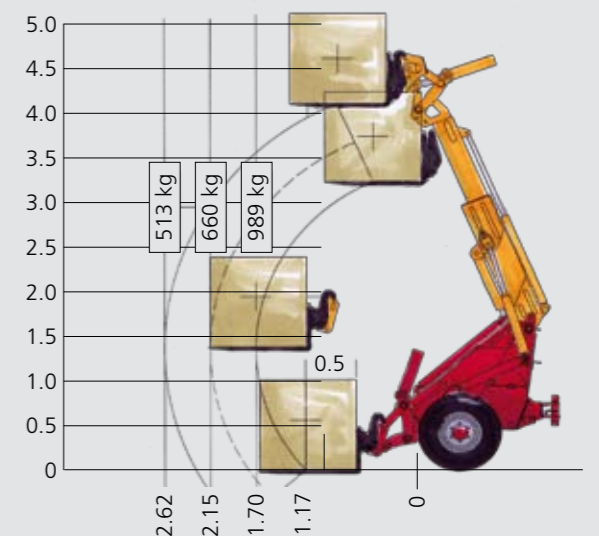
When used outside of agriculture, a ROPS foldable bar or overhead guard is required.

Load carrying capacity

2070 CX50 T

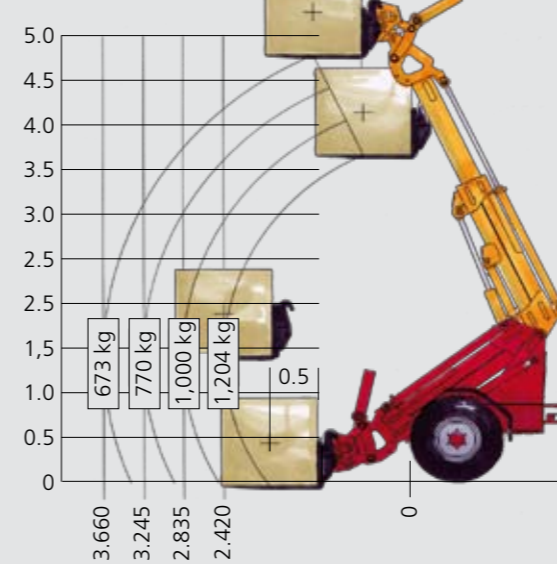


2070 CX80 T

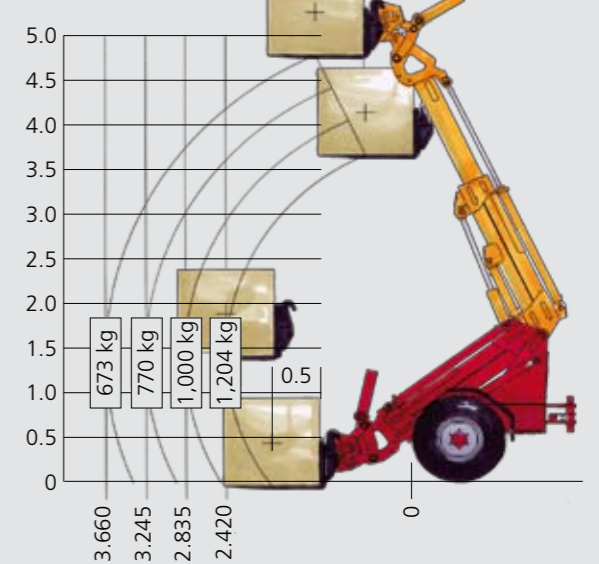


Carrying capacity according to EN 474-3
Open terrain, factor of safety 1.67
Machine 45° articulated
Data in metres

3070 CX60 LP T

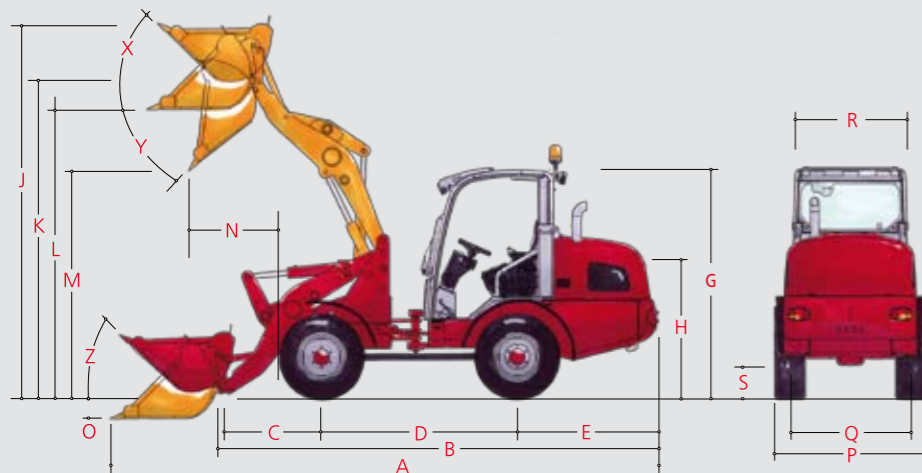
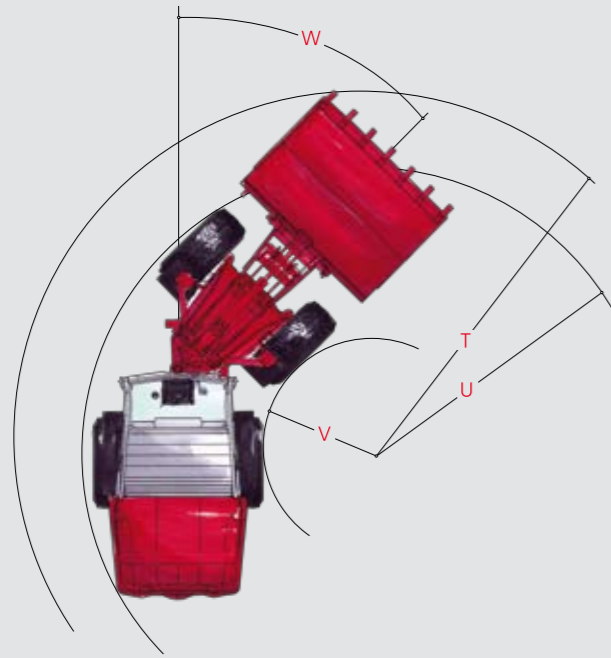
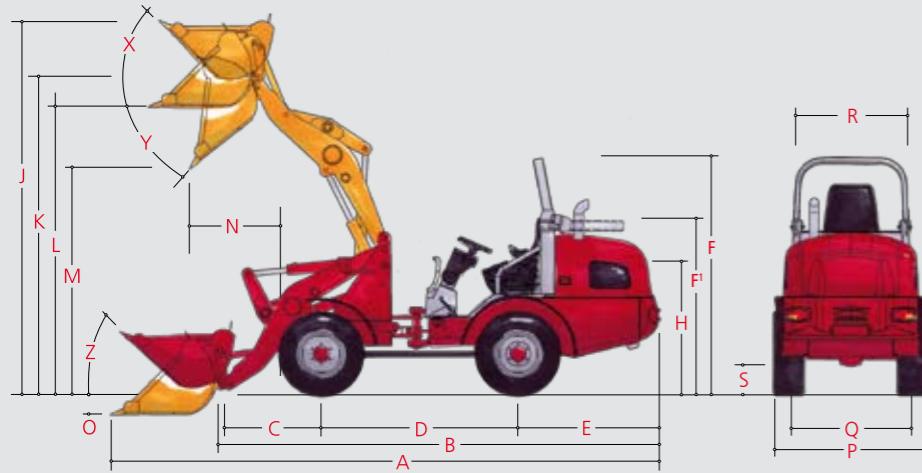


3070 CX80 LP T



Carrying capacity according to EN 474-3
Open terrain, factor of safety 1.67
Machine 44° articulated
Data in metres

Dimensions

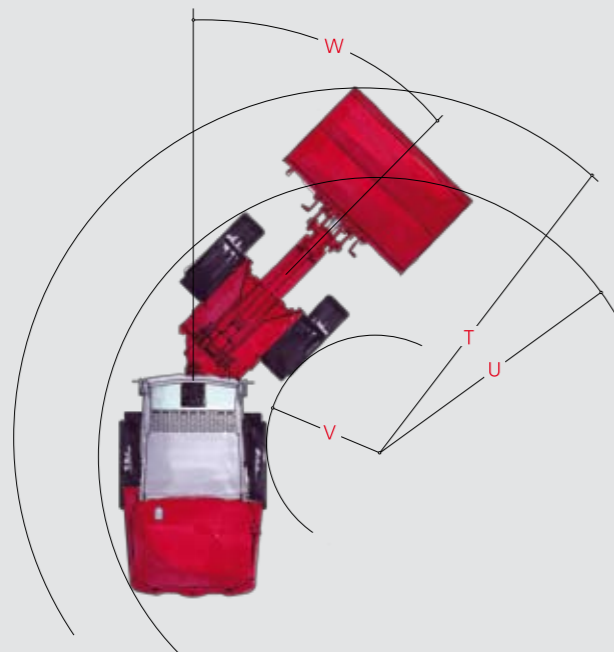
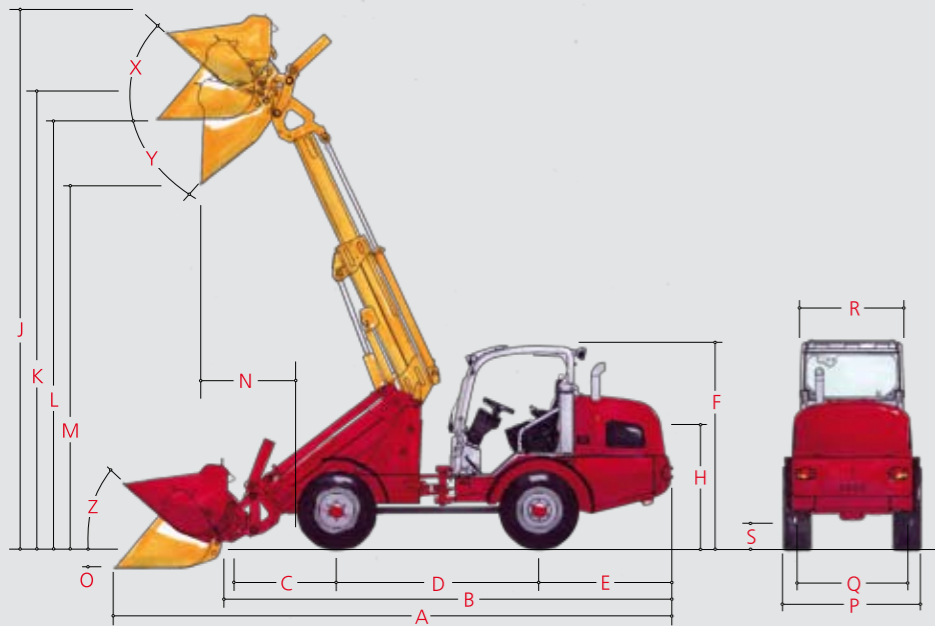


	2070 CX50 LP	2070 CX80 LP	3070 CX60 LP	3070 CX80 LP
Dimensions (mm)				
A Total length with standard bucket	4,956	4,956	5,606	5,606
B Total length without bucket	4,126	4,126	4,545	4,545
C Axle centre up to bucket hinge pin	701	701	1,030	1,030
D Wheel base	2,020	2,020	2,005	2,005
E Rear overhang	1,296	1,296	1,445	1,445
F Height to top of ROPS bar	2,365	2,365	2,438	2,438
G Height to top of ROPS bar, folded	1,796	1,796	2,013	2,013
Height above overhead guard	2,248	2,248	2,358	2,358
Height to top of overhead guard low	2,133	2,133	2,236	2,236
Height to top of cabin	2,133	2,133	2,236	2,236
H Seat height	1,169	1,169	1,295	1,295
J Total working height	3,901	3,901	3,906	3,906
K Max. height of bucket pivot	3,222	3,222	3,259	3,259
L Load-over height	2,984	2,984	2,957	2,957
M Max. dumping height	2,442	2,442	2,327	2,327
N Operating distance	344	344	867	867
O Digging depth	33	33	183	183
P Total width	1,415	1,415	1,538	1,538
Q Track width	1,125	1,125	1,250	1,250
R Bar width	1,087	1,087	1,120	1,120
Width of overhead guard	1,145	1,145	1,145	1,145
Width of cabin	1,155	1,155	1,155	1,155
S Ground clearance	294	294	347	347
T Max. radius	3,510	3,510	3,866	3,866
U Radius at the outer edge	3,219	3,219	3,419	3,419
V Inside turning radius	1,745	1,745	1,667	1,667
W Inclination angle	45°	45°	44°	44°
X Rollback angle at max. lifting height	54°	54°	45°	45°
Y Max. dumping angle	40°	40°	38°	38°
Z Backroll angle on the ground	48°	48°	43°	43°

	Width / reversed (mm)			
11.5/80 - 15.3 AS ET40	1,415 / 1,600	1,415 / 1,600	--	--
11.5/80 - 15.3 AS ET80	--	--	1,538 / 1,874	1,538 / 1,874
12.5/80 - 18 AS ET0	--	--	1,730	1,730
15.0/55 - 17 AS ET45	1,490 / 1,690	1,490 / 1,690	1,700 / 1,880	1,700 / 1,880
15.5/55 - 18 AS ET60	1,440 / 1,700	1,440 / 1,700	1,685 / 1,925	1,685 / 1,925
425/55 - 17 AS ET45	1,540 / 1,740	1,540 / 1,740	--	--
405/70 - 20 AS ET0	--	--	1,840	1,840
500/45 - 20 AS ET0	--	--	1,900	1,900
12 x 16.50 EM ET0	1,520	1,520	--	--
12 x 16.50 EM ET45	1,430 / 1,620	1,430 / 1,620	--	--
405/70 - 18 EM ET0	--	--	1,815	1,815

Values printed in bold indicate the standard tyre equipment

Dimensions



2070 CX50 LP T 2070 CX80 LP T 3070 CX60 LP T 3070 CX80 LP T

Dimensions (mm)	2070 CX50 LP T	2070 CX80 LP T	3070 CX60 LP T	3070 CX80 LP T
A Total length with standard bucket	5,102	5,102	6,030	6,030
B Total length without bucket	4,126	4,126	4,940	4,940
C Axle centre up to bucket hinge pin	701	701	1,136	1,136
D Wheel base	2,020	2,020	2,191	2,191
E Rear overhang	1,296	1,296	1,445	1,445
F Height above overhead guard	2,248	2,248	2,358	2,358
G Height to top of overhead guard low	2,133	2,133	2,236	2,236
Height to top of cabin	2,133	2,133	2,236	2,236
H Seat height	1,169	1,169	1,290	1,290
J Total working height	4,892	4,892	5,812	5,812
K Max. height of bucket pivot	4,284	4,284	4,959	4,959
L Max. Load-over height	3,978	3,978	4,631	4,631
M Max. dumping height	3,474	3,474	3,926	3,926
N Max. Operating distance	631	631	973	973
O Digging depth	33	33	192	192
P Total width	1,415	1,415	1,538	1,538
Q Track width	1,125	1,125	1,250	1,250
R Width of overhead guard	1,145	1,145	1,145	1,145
Width of cabin	1,155	1,155	1,155	1,155
S Ground clearance	294	294	347	347
T Max. radius	3,510	3,510	4,242	4,242
U Radius at the outer edge	3,219	3,219	3,668	3,668
V Inside turning radius	1,745	1,745	1,890	1,890
W Inclination angle	45°	45°	44°	44°
X Rollback angle at max. lifting height	45°	45°	45°	45°
Y Max. dumping angle	40°	40°	38°	38°
Z Backroll angle on the ground	45°	45°	43°	43°

Width / reversed (mm)	2070 CX50 LP T	2070 CX80 LP T	3070 CX60 LP T	3070 CX80 LP T
11.5/80 - 15.3 AS ET40	1,415 / 1,600	1,415 / 1,600	--	--
11.5/80 - 15.3 AS ET80	--	--	1,538 / 1,874	1,538 / 1,874
12.5/80 - 18 AS ETO	--	--	1,730	1,730
15.0/55 - 17 AS ET45	1,490 / 1,690	1,490 / 1,690	1,700 / 1,880	1,700 / 1,880
15.5/55 - 18 AS ET60	1,440 / 1,700	1,440 / 1,700	1,685 / 1,925	1,685 / 1,925
425/55 - 17 AS ET45	1,540 / 1,740	1,540 / 1,740	--	--
405/70 - 20 AS ETO	--	--	1,840	1,840
500/45 - 20 AS ETO	--	--	1,900	1,900
12 x 16.50 EM ETO	1,520	1,520	--	--
12 x 16.50 EM ET45	1,430 / 1,620	1,430 / 1,620	--	--
405/70 - 18 EM ETO	--	--	1,815	1,815

Values printed in bold indicate the standard tyre equipment

Weidemann – your partner with know-how and future-facing technology

The early seventies saw a demand in agriculture for a multi-purpose and cost-efficient "machine" that could handle loading, manure removal and transportation jobs. Weidemann's solution: the Hoftrac®.

Today, Weidemann is the leading European manufacturer of such machines. Since that time, the main factories at Diemelsee-Flechtdorf and Gotha, both in Germany, have produced more than 50,000 machines and implements for use in agriculture, nurseries, equestrian sports, public facilities/local authorities and in industry as well as in the construction industry.

Weidemann's main products are the Hoftrac®, wheel loaders and telehandlers. They are sold worldwide through the company's own sales organisation and numerous specialist distributors. The primary markets are in Europe, North America and the Far East.

A full-coverage service network matches the distribution of Weidemann products, providing rapid and expert assistance at all times. A European 24-hour spare parts delivery service supports all of our service partners and end users. Orders placed in the morning are guaranteed for next day delivery.

As your expert partner, Weidemann is always well equipped. Our product line offers excellent conditions: expertise built on extensive experience, skilled employees and future-facing technology guarantee state-of-the-art products with high customer benefit and excellent quality.



Weidemann GmbH
Mühlhäuser Weg 45-49
34519 Diemelsee-Flechtdorf
Germany
Tel +49 (0)5633 609-0
Fax +49 (0)5633 609-666
info@weidemann.de
www.weidemann.de

All technical specifications in this brochure refer to standard production models which were tested under Central European operating conditions and describe the standard functions of these models. The equipment and the corresponding function modes as well as the accessories depend on the respective model and the product options as well as the national regulations of the country of sale. The illustrations may include products which are not mentioned or available as standard.

The descriptions, illustrations, weight specifications and technical data are not binding and comply with state-of-the-art technology at the time of going to press. We reserve the right to modify the design, equipment, appearance and technology without prior notice due to the continuous further development of the products.

Should you need special functions which require the provision of additional components and/or special framework conditions, please contact us! We will be happy to answer any questions you might have and will inform you of the feasibility of implementing the special functions taking into consideration the product requirements and the ambient conditions required for this purpose. In case of doubt with regard to the capacity or the function of our products due to special circumstances, we advise you to carry out trial runs under safe framework conditions.

Despite every effort on our part, deviations from the illustrations or dimensions, calculation errors, printing errors or incomplete information in this brochure cannot be excluded. Therefore, we cannot guarantee the correctness and completeness of the information given in this brochure. We guarantee the proper functioning of our products within the scope of our general terms and conditions. In general, we cannot offer guarantees beyond those general terms and conditions. We cannot accept any liability going beyond our general terms and conditions.