



The new 26 K.1 fast-erecting crane

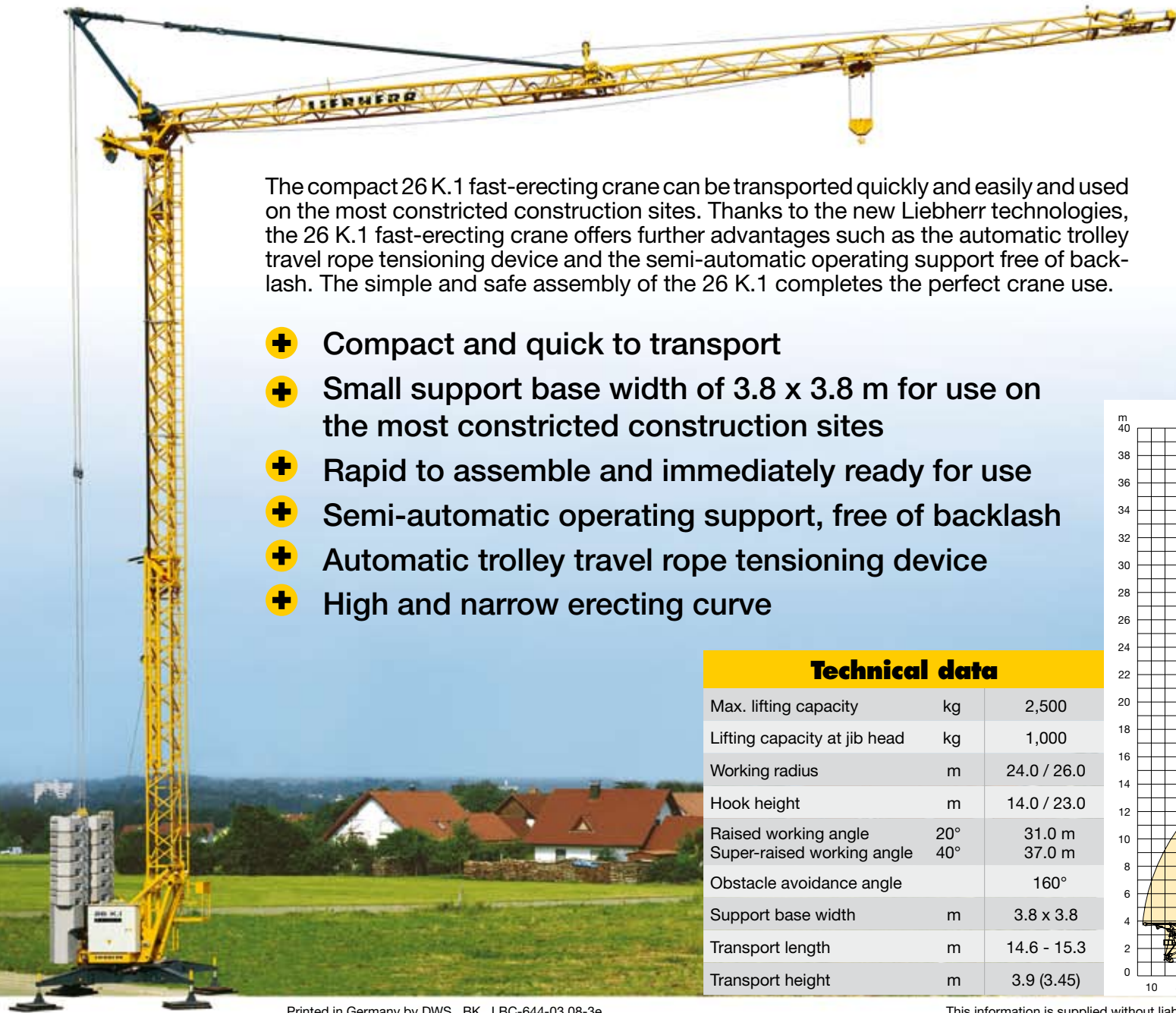
Easy to use and assemble

The new 26 K.1 fast-erecting crane is highly versatile. It combines the advantages of a hydraulic fold-away jib with those of a telescopic lattice tower that enables various hook heights. In developing the new 26 K.1, particular attention was paid to ease of use and assembly.

In addition to the standard hook height of 23.0 m, the new 26 K.1 fast-erecting crane also offers the innovative 40° super-raised working angle.

- + 40° super-raised working angle for 37.0 m hook height
- + 160° obstacle-avoidance jib angle
- + Tried-and-tested erecting kinematics, easy to use
- + High-performance drives for efficient operation
- + Hook heights of 14.0 m to 37.0 m for high versatility

LIEBHERR

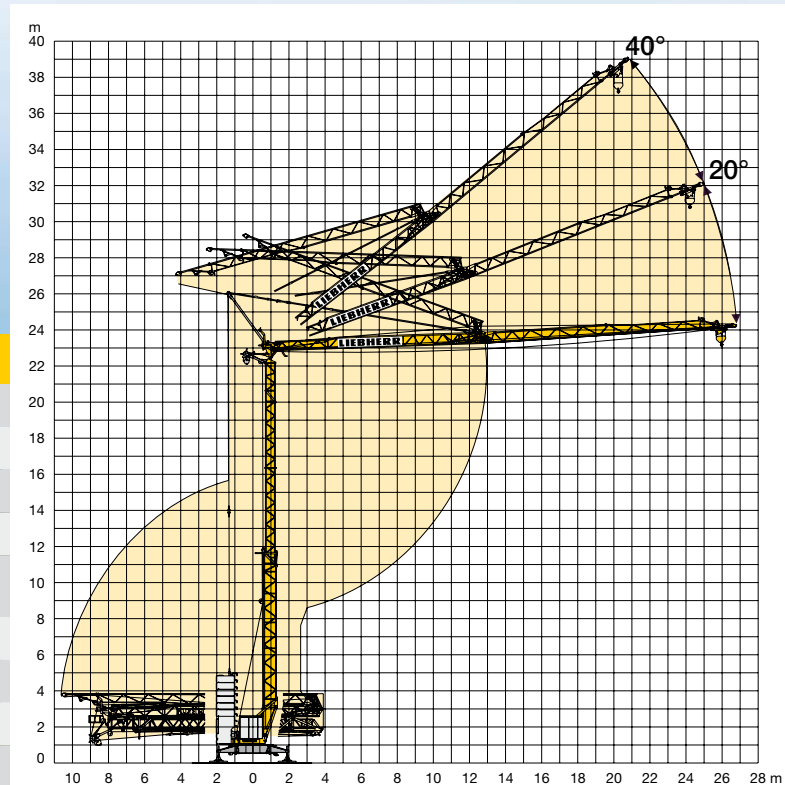


The compact 26 K.1 fast-erecting crane can be transported quickly and easily and used on the most constricted construction sites. Thanks to the new Liebherr technologies, the 26 K.1 fast-erecting crane offers further advantages such as the automatic trolley travel rope tensioning device and the semi-automatic operating support free of backlash. The simple and safe assembly of the 26 K.1 completes the perfect crane use.

- ✚ Compact and quick to transport
- ✚ Small support base width of 3.8 x 3.8 m for use on the most constricted construction sites
- ✚ Rapid to assemble and immediately ready for use
- ✚ Semi-automatic operating support, free of backlash
- ✚ Automatic trolley travel rope tensioning device
- ✚ High and narrow erecting curve

Technical data

Max. lifting capacity	kg	2,500
Lifting capacity at jib head	kg	1,000
Working radius	m	24.0 / 26.0
Hook height	m	14.0 / 23.0
Raised working angle	20°	31.0 m
Super-raised working angle	40°	37.0 m
Obstacle avoidance angle		160°
Support base width	m	3.8 x 3.8
Transport length	m	14.6 - 15.3
Transport height	m	3.9 (3.45)



Printed in Germany by DWS BK LBC-644-03.08-3e

This information is supplied without liability.

Subject to technical modifications.

Liebherr-Werk Biberach GmbH

Postfach 1663, D-88396 Biberach an der Riß
 S +49 7351 41-0, Fax +49 7351 41-22 25
 www.liebherr.com, E-Mail: info.lbc@liebherr.com