

# Multi-Tool

Wacker Neuson Skid Steer Loaders

501s • 701s • 701sp



**WACKER  
NEUSON**



„The more practical something is, the more indispensable in everyday life it becomes.“ (Karl Elsener, founder of Victorinox - Swiss Army Knives)

# The agile and versatile attachment carriers 501s and 701s(p) for rental fleets, construction sites, industry and agriculture.

**POWERFUL SKID STEER LOADERS WITH FOUR MAINTENANCE-FREE QUATTROSTATIC® DRIVE TRAVEL MOTORS. EVEN THE BASIC STANDARD MODELS ARE FAR MORE THAN JUST FULLY-EQUIPPED THEY ARE COMPACT IN THEIR DIMENSIONS, INCREDIBLY FLEXIBLE AND EXTRAORDINARILY POWERFUL PERFORMERS.**

The 501 und 701(p) Skid Steer Loaders are in a class of their own, with ample power, a safe cabin as a standard feature and components specially designed to be low maintenance or maintenance free. Their additional ground clearance gives you more room to manoeuvre.



Full focus on the core issue.  
In every situation. At every moment.



**The load sensing system ensures a homogenous energy balance.  
Whenever needed – even under engine stress.**

In everyday working situations, the capability of an engine to have the power to deal with hydraulic output and guarantee a safe travel drive is essential. Even when especially high performance is needed from the engine, the load sensing regulation ensures an optimal **engine speed curve**. The tandem pump regulates back down automatically as needed – allowing the operator to concentrate on the job at hand. The hydraulic pilot control (an optional feature for the 501s) and the load sensing system provide full available power at all times. You have the option of either an H control or an ISO control pattern.

**Our innovative arm system handles high working loads while providing exceptional visibility and unobstructed views.**

- Compact dimensions,
- low operating weight and
- bucket weight placed as close as possible to the machine, allowing higher working loads and an optimal forward line of sight.

## The competitive edge as a standard feature— Why be satisfied with second place?

The many advantages you get from the 501s and the 701s(p) will pay off day by day:

- Increased engine power.
- Improved agility.
- High working load combined with especially compact dimensions.



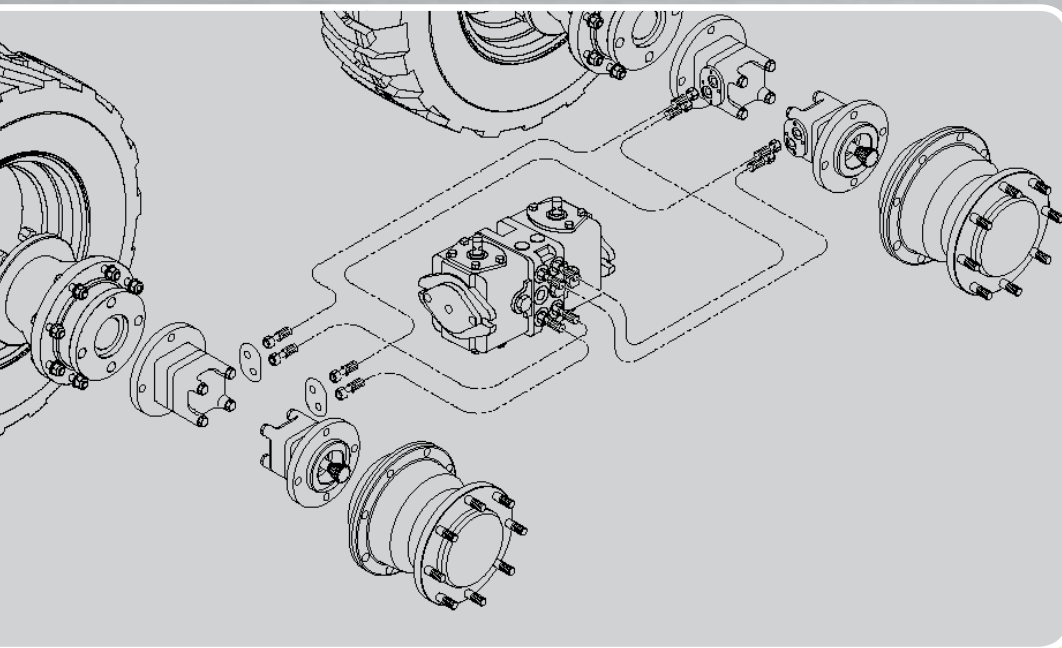
- 1 Full forward visibility:  
The single bucket cylinder makes it possible.
- 2 Best available protection for the operator in the ROPS/FOPS cabin equipped with safety belt and safety bar.
- 3 Additional “Powerflow” hydraulic lines make the 701sp enormously versatile.

„Powerflow”... delivering the extra power you require: Hydraulic-turbo for the 701sp.

The three additional hydraulic lines providing a 115l/min output, combined with a 39 kW turbo-engine, give you a real “boost.” Five hydraulic connections are therefore available – two standard hydraulic lines and three “Powerflow” lines.



# The focus of a new movement: The Quattrostatic® drive from Wacker Neuson.



## Das Quattrostatic® concept: A competitive edge on four wheels.

Each of the four wheels is driven by its own module consisting of an hydraulic motor and a gear unit, ensuring full power transmission on uneven terrain and up to 48% more clearance below the chassis.

## The advantages of Quattrostatic®

- No chain box – up to 48% more ground clearance.
- Friction-locked traction at all times and optimal rough terrain mobility.
- No parts susceptible to wear and tear (chain or chain wheels).
- Low costs and high availability of machines.



Up to  
**48%**  
more ground  
clearance



1 The large service access panel puts the complete hydraulic unit within easy reach. Maintenance in no time at all – true practically-oriented and time-saving functional design at its best.

2 Rear tipping cabin gives optimal access to engine and pump compartments.



2

**Simplified maintenance and service: ease of use pays off more and more each day.**

The rear tipping cabin provides the maximum in servicing convenience. The large engine cover assures especially easy access to all the service points.

**Low maintenance arm system, due to composite bushes**

Extended, 500 hour lubrication intervals – a unique feature in this class.



Discover new advantages each day.  
Never sacrifice productivity.



**The universal rapid change system means you can take advantage of the sheer versatility of the machine at any time.**

The rapid change system is a standard feature of the 501s/701s(p) models and allows a wide range of attachments to be fitted. As universal tool carriers, the machines are an even more valuable asset.

**Bucket parallel guide: Load and tool are always on the safe side.**

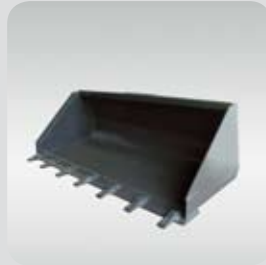
Attached tools such as a bucket or pallet fork are automatically maintained parallel to the ground by the bucket parallel guide eliminating the need for manual adjustment.





# Your system machine of the future. Programmed for versatility.

excavating bucket  
toothed



light load bucket



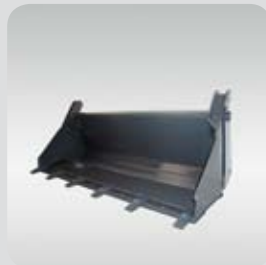
universal bucket



4-in-1-bucket



4-in-1-bucket  
toothed



sweeper bucket



clamp bucket



pallet fork

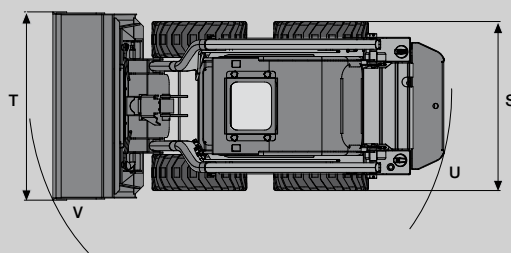
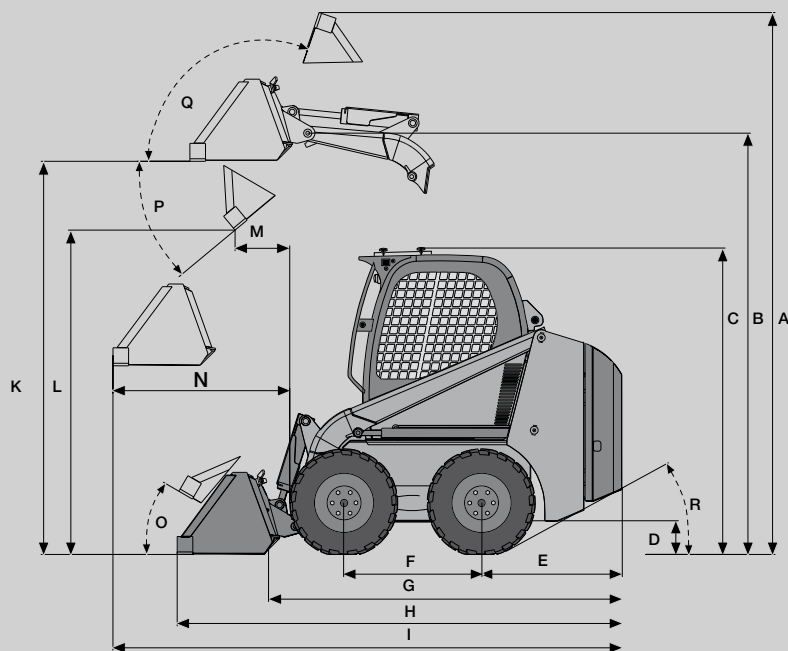


clamp forklift



## The Skid Steer Loader as a system machine:





- Boosting value with more application flexibility.
- Pays off with fast amortisation.
- Short service and maintenance times.
- High compatibility for all leading manufacturer attachments and tools.
- Easy to operate, safe to drive.



#### DIMENSIONS

	<b>501s</b>	<b>701s · 701sp</b>
<b>A</b> Max. height	3475 mm	3620 mm
<b>B</b> Height to bucket swivel-joint	2700 mm	2860 mm
<b>C</b> Cabin height	1930 mm	1947 mm
<b>D</b> Ground clearance	225 mm	252 mm
<b>E</b> Tail projection (from rear axle)	898 mm	1056 mm
<b>F</b> Wheelbase	885 mm	890 mm
<b>G</b> Total length without attachments	2263 mm	2440 mm
<b>H</b> Total length with standard bucket	2860 mm	3060 mm
<b>I</b> Max. vehicle length	3258 mm	3517 mm
<b>K</b> Bucket height	2522 mm	2660 mm
<b>L</b> Max. dumping height	2122 mm	2325 mm
<b>M</b> Reach	424 mm	516 mm
<b>N</b> Max. reach (with horizontal arm position)	1136 mm	1173 mm
<b>O</b> Tipping angle on the ground	30 °	29 °
<b>P</b> Tipping angle	40 °	35 °
<b>Q</b> Tipping angle	105 °	105 °
<b>R</b> Gradient	29 °	27 °
<b>S</b> Vehicle width (with standard tyres 27 x 8,5 - 15 · 10 x 16,5)	1230 mm	1475 mm
<b>T</b> Bucket width	1270/1370 mm	1520 mm
<b>U</b> Turn radius – tail	1381 mm	1520 mm
<b>V</b> Turn radius – front	1656 mm	1771 mm



	<b>501s</b>	<b>701s • 701sp</b>
 <b>OPERATIONAL DATA</b>		
<b>Operational weight*</b>	1810 kg	2400 kg • 2450 kg
<b>Working load</b>	510 kg	680 kg
<b>Tipping load</b>	1020 kg	1360 kg
<b>Bucket content levelled</b>	0,21 m <sup>3</sup>	0,29 m <sup>3</sup>
<b>Bucket content heaped</b>	0,26 m <sup>3</sup>	0,36 m <sup>3</sup>
 <b>ENGINE</b>		
<b>Make/type</b>	YANMAR 3TNV88	YANMAR 4TNV88 • YANMAR 4TNV84 Turbo
<b>Model</b>	water cooled 3-cylinder diesel engine	water cooled 4-cylinder diesel engine
<b>Net engine output</b>	27 kW (36 HP)	34 kW (46 HP) • 39 kW (52 HP)
<b>Capacity</b>	1642 cm <sup>3</sup>	2189 cm <sup>3</sup> • 1998 cm <sup>3</sup>
<b>Operating speed</b>	3000 min <sup>-1</sup>	2800 min <sup>-1</sup>
<b>Battery</b>	12 V, 71 Ah	12 V, 88 Ah
<b>Diesel tank volumes</b>	45 l	52 l
 <b>HYDRAULIKSYSTEM</b>		
<b>Pumps</b>	gear pumps	gear pumps
<b>Work hydraulics operational pressure</b>	185 bar	210 bar
<b>Work hydraulics hydraulic output</b>	42 l/min	62 l/min • –
<b>Work hydraulics hydraulic output „Powerflow“</b>	–	– • <b>115 l/min</b>
<b>Hydraulic oil cooler</b>	combi-cooler, standard feature	combi-cooler, standard feature
<b>Hydraulic tank content</b>	45 l	55 l
 <b>TRAVEL DRIVE</b>		
<b>Pumps</b>	Axial piston-variable displacement pump	Axial piston-variable displacement pump
<b>Travel speeds</b>	10,5 km/h	12 km/h
<b>Standard tyres</b>	27 x 8,5 - 15	10 x 16,5
<b>Drive concept</b>	Quattrostatic® = 4 separate travel motors/gear units	Quattrostatic® = 4 separate travel motors/gear units
<b>Brake</b>	hydraulic parking brake	hydraulic parking brake

\* incl. standard bucket, full tank and driver (80 kg).

**STANDARD EQUIPMENT**

501s

701s • 701sp

**ENGINE**

Water cooled 3-cylinder YANMAR diesel engine

**HYDRAULICS**

Arm floating position  
 Hydraulic parking brake  
 Frontal auxiliary hydraulics  
 Combi-cooler

**CABINS**

**ROPS/FOPS Level 1**, with 12V power socket, interior lighting plus luggage rack and lock-up document box.  
**Control** with a big instrument selection  
**Adjustable driver's seat**  
**Unrolling safety belt**  
**Safety shackle**  
**Load hooks**  
**Lexan safety roof**

**TRAVEL DRIVE**

**Quattrostatic®**: 4 separate travel motors driving the wheels via reduction gear unit.  
**Advantages**  
 - Travel drive without chains  
 - No chain boxes giving greatest possible chassis clearance  
 - No maintenance of travel drive

**FURTHER ADVANTAGES**

**Universal fast change system**

**ENGINE**

**S** Water cooled 4-cylinder YANMAR diesel engine  
**SP** Water cooled 4-cylinder YANMAR diesel engine with turbo-charging

**HYDRAULICS**

Hydraulic controlled travel drive and work hydraulics  
 Tandem pump load limit regulation  
 Arm floating position  
 Hydraulic parking brake  
 Frontal auxiliary hydraulics  
 combi-cooler  
**SP** „Powerflow“  
 Increased oil flow in the auxiliary hydraulic system  
 (2 auxiliary hydraulics connections + 3 "Powerflow"-connection points)

**CABINS**

**ROPS/FOPS Level 1**, with 12V power socket, interior lighting plus luggage rack and lock-up document box  
**Dashboard** with extensive instrumentation display  
**Adjustable seat designed for added comfort**  
**Adjustable armrest**  
**Unrolling safety belt**  
**Safety shackle**  
**Interior rear mirror**  
**Load hooks**  
**Lexan safety roof**

**TRAVEL DRIVE**

**Quattrostatic®**: 4 separate travel motors driving the wheels via reduction gear unit.  
**Advantages**  
 - Travel drive without chains  
 - No chain boxes giving greatest possible chassis clearance  
 - No maintenance travel drive

**FURTHER ADVANTAGES**

**Bucket parallel guide** (can be switched for upwards movement)  
**Gas pedal**  
**Universal fast change system**

**OPTIONAL FEATURES**

501s

701s • 701sp

**Airboss®** tyres  
**Work floodlight at rear**  
**BP-Biohyd SE 46**  
**Panolin bio oil**  
**Anti-theft system**  
**Turning light**  
**Single point lifting unit.**  
**FOPS roof level 2**  
**Gas pedal**  
**Interior rear mirror**  
**Comfortable seat**  
**Reverse warning signal**  
**Mirror package** (mirrors right and left)  
**Bucket parallel guide**  
 (can be switched for up movements)  
**Narrow tyre** (width with narrow bucket 1190 mm)  
**Security 24** (1500 Std.), **Security 24** (2000 Std.)  
**Side windows**  
**Special RAL paintwork** (colour only for yellow parts)  
**Special non-RAL paintwork** (colour only for yellow parts)  
**Road permit package**  
**Extensive attachments range**  
**Protection against vandalism**  
**Hydraulic controls** (hydraulic controlled travel drive and work hydraulics incl. load limit regulation of the tandem pump; choice of ISO controls or two-hand controls (H-controls))

**Airboss®**-tyres  
**Work floodlight at rear**  
**BP-Biohyd SE 46**  
**Panolin bio oil**  
**Anti-theft system**  
**Turning light**  
**Single point lifting unit.**  
**FOPS roof level 2**  
**Stabiliser at rear for arm**  
**Cabin full glazing**  
**Reverse warning**  
**Mirror package** (mirrors right and left)  
**Narrow tyres** (width with narrow bucket 1370 mm)  
**Security 24** (1500 hrs.), **Security 24** (2000 hrs.)  
**Side windows**  
**Special RAL paintwork** (colour only for yellow parts)  
**Special non-RAL paintwork** (colour only for yellow parts)  
**Road permit package**  
**Extensive attachments range**  
**Vandalism protection**  
**Two-hand controls (H controls)**

# The Wacker Neuson Skid Steer Loaders 501s • 701s • 901s • 1101c: Built for power in every weight class.

Superbly equipped to meet the demands of any job where increased productivity is essential:

- construction industry.
- gardening and landscaping.
- agriculture.
- logistics.
- recycling management.

Simply put, wherever superior power reserves are every bit as important as intelligent hydraulics, professional basic equipment and operational safety: Compact Equipment – of the very best standard.



**WACKER  
NEUSON**