

S
N
O
S
S
E
S

5040

ROAD BUILDER

SAE Net Horsepower: 268 HP (200 kW)

Operating Weight: 110,679 lbs (50 203 kg)

Swing Torque: 110,600 lbf-ft. (150 kN·m)



Link-Belt
FORESTRY



PURPOSE-BUILT FOR THE WORK YOU DO

Link-Belt Forestry machines are designed and built with you in mind. Whether you're pioneering sites, building access roads, harvesting timber, processing logs or loading trucks at the mill yard, we've got the right equipment for the job. The new Link-Belt 5040 forestry machines feature powerful, fuel-efficient Final Tier 4 engines that don't require a Diesel Particulate Filter (DPF), matched to a larger fuel tank that keeps you working longer. 5040 forestry machines offer improved cycle times, more swing torque, and better fuel economy. This attention to detail insures that Link-Belt Forestry machines deliver outstanding performance and productivity where it matters most. We focus on the machine so you can focus on your work.



ATTENTION TO DETAILS AT EVERY LEVEL



Faster cycle time and attachment speed:

- 23% faster boom-down/arm-in
- 19% faster boom up/swing
- Up to 7% bonus lifting capacity due to wider lifting area and fuel tank placement on counterweight

7" high-definition color monitor



Superior maneuverability and fine control:

- Dedicated C/V for application
- Forestry-exclusive circuit for arm-in regeneration and arm-2 spool

Full-time rear view camera is standard



Heavy-duty components built for the woods include house doors/covers/protective guards/redesigned PF/reinforced boom foot revolving frame/thicker undercarriage/factory-fabricated attachment with optimized heel

RemoteCARE® telematics keeps a watchful eye on performance, maintenance intervals and theft deterrence; FREE subscription.



Debris screens and optional fuel shut-off valve for safety

Convenient ticket slot; now the operator doesn't have to bend down to hand the truck driver a log ticket



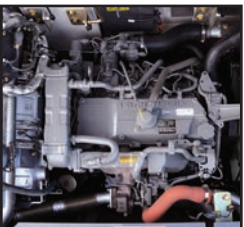
Tough, field-repairable parts include 3-pc. steel engine hood, add-on hockey stick, LED lights and no-bolt oil filler

Oregon OSHA/ROPS/WCB-certified forestry cabs are 8082-2 compliant; are available with sky roof and escape hatch. Choose rear-entry or side-entry cabs & risers, with windows made from impact-resistant polycarbonate.



2-3% DEF (Diesel Exhaust Fluid) to diesel consumption rate, combined with one of the largest DEF tank capacities lets you work long hours between refills

Servicing is a snap, with convenient access to all routine service points, including sample ports for engine and hydraulic oil. All service ports can be accessed via hand-turn knobs, with no tools needed.



FT4 engine is fuel efficient without sacrificing power and no diesel particulate filter to ever worry about!

ROCK-SOLID WARRANTY COVERAGE

All 40-Series machines are backed by a 3-year/3,000* hour Full Machine Warranty, 3-year/5,000 hour Powertrain Warranty, 3-year/10,000 hour XtraStructure Warranty, 5-year/3,000 hour EPA Emissions Warranty and participation in the X4/40-Series Fluids Analysis Program for the life of the warranty. Extended warranty coverage packages are also available.

**Applies to 2018 or newer serialized models only. All other 40-Series models are covered by a 1-year/1,800-hour full machine warranty, 2-year/3,000 hour Engine Warranty (2,000 hrs. electrical parts)*



OUR DEALERS KNOW THEIR WAY AROUND THE WOODS

A network of Link-Belt Forestry and Excavator dealers across the U.S. and Canada is waiting to serve you. Expect fast and dependable service, backed by 24/7 access to parts.



SPECIFICATIONS

Engine

Isuzu AQ-6HK1X Final Tier 4 turbocharged diesel engine with electronic control (ECM) and high pressure common-rail fuel injection, 6-cylinder, water-cooled, cooled Exhaust Gas Recirculation (EGR), Intercooler, Variable-Geometry Turbocharger (VGT), Diesel Oxidation Catalyst (DOC) and Selective Catalytic Reduction (SCR) system with Dosing Control Module (DCM) and heated DEF lines. Electronic fuel pump and priming, Fuel cooler, Auto-idle start, Auto warm-up, EPF engine protection, dual-stage fuel filtration, remote oil filter, engine oil sample port, green plug oil drain, double element air filter.

SAE J 1349 net hp.....	268 HP (200 kW) @ 1,900 rpm
Displacement	7.8 L
Maximum torque.....	729 lbf-ft (988 N-m) @ 1,500 rpm
Starter	24V-5.0kW
Alternator.....	90 amp
Battery	(2) 12-volt 128 amp hours

Cab and Controls

Oregon OSHA/ROPS/WCB compliant forestry cab, 12" riser, (8) LED exterior work lights, Key Fob with remote light functionality, Sirius® Satellite and iPod® ready sound system with AM/FM, MP3 interface, dual speakers and mute button, SCM high-back air-suspension seat, Sliding/reclining, adjustable armrests, lumbar support, retractable seat belt and foot rests, +/- 5 degree tilt, Control panel with illuminated soft-touch switches, High definition LCD monitor with full color 7" display, 2-position LED swivel map lights with red ambient illumination for safety and night vision compatibility, Low-effort controls pre-wired for auxiliary hydraulics, Sliding 4-position tilting control consoles, Climate control, Job ticket slot, CB radio antenna mounting provision, Sky roof, Single motor dual arm intermittent/continuous windshield wiper with washer, Single pedal travel, Travel alarm with cancellation switch, Footrests, Cup holder, 12-volt outlet, Digital clock, 24-volt cigarette lighter, Ashtray, Dome lights, Coat hook, High output dual horns, Handrails with deflector, Floor mat, Emergency exit.

Three selectable working modes, Anti-theft password protection system, On-board self-diagnostic system with memory and service interval reminders, Free Swing control, Auto-idling system, One-touch decelerator, Auto-idle engine shutdown, Boom/Bucket Spool Stroke Control (SSC), Attachment Cushion Control, Neutral safety start, Gate-lock safety shutoff, RemoteCARE® Telematics with 6 year free subscription.

Hydraulic System

Open-center system, (2) variable displacement axial piston pumps, (1) gear pump for pilot controls, (1) gear pump/valve for grapple rotate, Dedicated and proprietary main control valve tuned for enhanced performance with one 4-spool valve and one 5-spool valve with auxiliary spool, Programmable auxiliary pump settings with single or double pump control, Double-acting auxiliary hydraulics and rotate circuits, Processor return line fitting, Oil cooler, O-ring face seals, High-performance 6-micron return filter, Hydraulic oil sample port, Firewall.

Hydraulic Pumps

Maximum flow	2 x 79.3 gpm (2 x 300 l/min)
Pilot pump maximum flow	7.5 gpm (28.5 l/min)
Auxiliary pump maximum flow	9.2 gpm (35.0 l/min)

Relief Valve Settings

Boom/arm/bucket	4,970 psi (343 bar)
Swing circuit	4,270 psi (294 bar)
Travel.....	4,970 psi (343 bar)

Hydraulic Oil Filtration

Return filter	6 micron
Pilot filter	8 micron
Suction screen.....	105 micron

Swing

Planetary reduction powered by axial piston motor. Internal ring gear with grease cavity for swing pinion. Swing bearing is single-row shear type ball bearing. Mechanical disc swing brake. Auto power swing. Free swing control.

Swing speed.....	0 - 7.6 rpm
Tail swing.....	12' 3" (3.74 m)
Swing torque	110,600 lbf-ft. (150 kN·m)

Undercarriage

High-Wide track gauge with x-pattern carbody, Full-length track guards (2 piece, bolt-on), Sealed and strutted track chain, Sealed rollers and idlers, Idler mount reinforcement, Two-speed independent hydrostatic travel with planetary final drive, HD travel motor covers, Disc type brakes, Adjustable track tension, HD swivel guard - hinged.

Carrier rollers.....	2 per side
Track rollers.....	9 per side
Track link pitch.....	9.02" (229 mm)
Shoes	50 per side
Shoe width.....	27.5" (700 mm)
Ground Pressure (less cab)	10.2 psi (0.070 MPa)

Travel System

Two-speed independent hydrostatic travel with axial piston motors. Hydraulic motor powered output shaft coupled to a planetary reduction unit and track sprocket. All hydraulic components mounted within the width of side frame. Automatic downshift. Single pedal travel. Spring applied, hydraulically released disc parking brake built into each motor. Each travel motor equipped with counterbalance valve to prevent overspeeding down an incline.

Max. travel speed	1.7 - 2.8 mph (2.7 - 4.5 km/h)
Drawbar pull	76,400 lbf (340 kN)
Gradeability	70% (35°)

Attachment

Boom.....	21' 2" (6.45 m)
Arm.....	10' 8" (3.25 m)

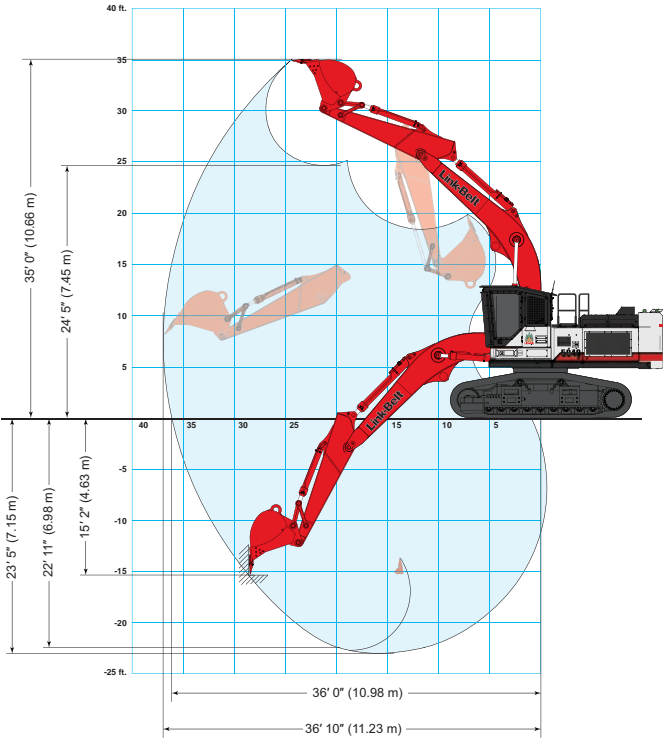
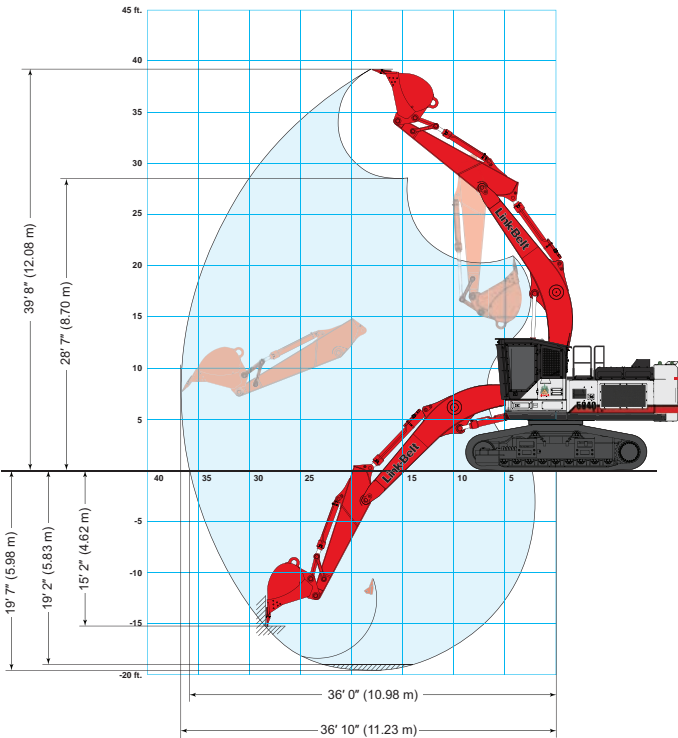
Lubricant & Coolant Capacity

Fuel tank.....	216 gal. (820 liters)
Hydraulic tank.....	46 gal. (175 liters)
Hydraulic system.....	92 gal. (350 liters)
Final drive (per side).....	4.0 gal. (15 liters)
Swing drive.....	2.8 gal. (10.5 liters)
Engine oil.....	12.7 gal. (48 liters)
DEF Tank.....	40 gal. (152 Liters)
Cooling system.....	10 gal. (38 liters)

Operating Weight

Working weight with side-entry forestry cab, 12" (305 mm) cab riser, road builder attachment, 3,459 lb. (1 569 kg) 42" HDP bucket, high-wide undercarriage, 15,200 lb. (6 900 kg) counterweight, 27.5" (700 mm) 2-bar shoes	110,679 lbs (50 203 kg)
---	-------------------------

WORKING RANGE



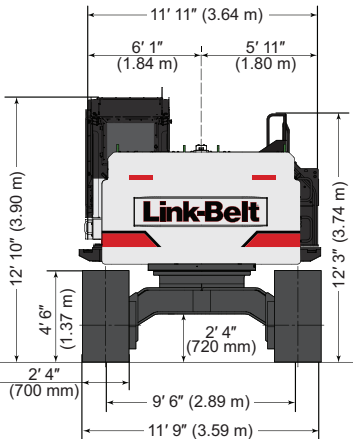
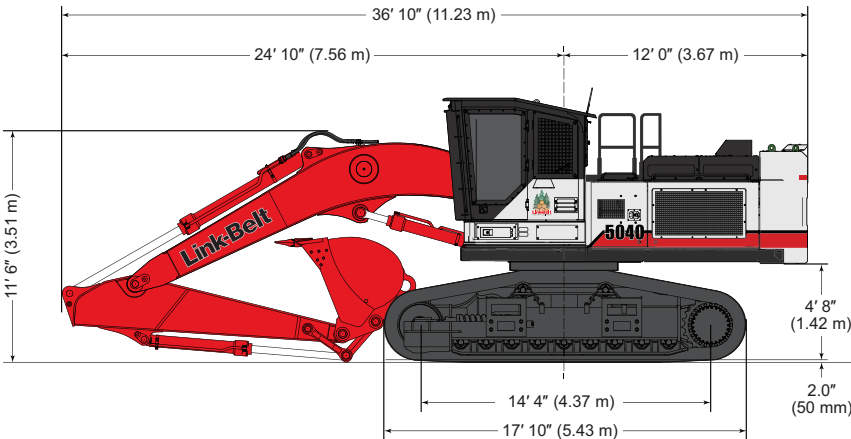
Boom Cylinders in High Lift Position

Machine Equipped with 21' 2" (6.45 m) Boom, 10' 8" (3.25 m) Arm	High Wide Undercarriage
A. Maximum reach	36' 10" (11.23 m)
B. Maximum reach @ ground level	36' 0" (10.98 m)
C. Maximum dig depth	19' 7" (5.98 m)
D. Maximum dig height	39' 8" (12.08 m)
E. Maximum dump height	28' 7" (8.70 m)
F. Digging depth 8' (2.44 m) level bottom	19' 2" (5.83 m)
G. Maximum vertical wall depth	15' 2" (4.62 m)



Boom Cylinders in Standard Position



Machine Equipped with 21' 2" (6.45 m) Boom, 10' 8" (3.25 m) Arm	High Wide Undercarriage
A. Maximum reach	36' 10" (11.23 m)
B. Maximum reach @ ground level	36' 0" (10.98 m)
C. Maximum dig depth	23' 5" (7.15 m)
D. Maximum dig height	35' 0" (10.66 m)
E. Maximum dump height	24' 5" (7.45 m)
F. Digging depth 8' (2.44 m) level bottom	22' 11" (6.98 m)
G. Maximum vertical wall depth	15' 2" (4.63 m)

TRAVEL DIMENSIONS



LIFTING CAPACITIES

Radius of Load																	
10' 8" (3.25 m) Arm with 21' 2" (6.45 m) Boom in Standard Position and 3,459 lb. (1 569 kg) Bucket (High-Wide Undercarriage)																	
 End	 Side	5' 0" (1.5 m)		10' 0" (3.0 m)		15' 0" (4.5 m)		20' 0" (6.0 m)		25' 0" (7.5 m)		30' 0" (9.0 m)		35' 0" (10.5 m)		Max. Reach	
End	Side	End	Side	End	Side	End	Side	End	Side	End	Side	End	Side	End	Side	End	Side
+30' 0" (9.0 m)	lbs															7,650*	7,650*
	kg															3 450*	3 450*
+25' 0" (7.5 m)	lbs											12,000*	12,000*			7,300*	7,300*
	kg											5 920*	5 920*			3 290*	3 290*
+20' 0" (6.0 m)	lbs									15,050*	15,050*	13,650*	13,650*			7,200*	7,200*
	kg									6 960*	6 960*	6 270*	6 270*			3 270*	3 270*
+15' 0" (4.5 m)	lbs					26,300*	26,300*	20,700*	20,700*	17,200*	17,200*	14,800*	14,800*	9,348	9,348	7,350*	7,350*
	kg					12 210*	12 210*	9 610*	9 610*	7 940*	7 940*	6 830*	6 830*	4 240	4 240	3 340*	3 340*
+10' 0" (3.0 m)	lbs			45,550*	45,550*	31,800*	31,800*	23,850*	23,850*	19,050*	19,050*	16,000*	15,950	11,133*	11,133*	7,750*	7,750*
	kg			21 320*	21 320*	14 590*	14 590*	11 050*	11 050*	8 810*	8 810*	7 380*	7 380*	5 050*	5 050*	3 520*	3 520*
+5' 0" (1.5 m)	lbs			21,300*	21,300*	36,950*	36,950*	26,450*	26,450*	20,500*	20,500*	16,700*	16,100	11,023	11,023	8,200*	8,200*
	kg			9 230*	9 230*	16 950*	16 950*	12 250*	12 250*	9 480*	9 480*	7 720*	7 470	5 000	5 000	3 730*	3 730*
Ground Line	lbs	14,850*	14,850*	23,600*	23,600*	38,750*	38,750*	27,850*	27,850*	21,200*	20,800	16,900*	15,700			9,100*	9,100*
	kg	6 710*	6 710*	10 450*	10 450*	17 810*	17 810*	12 880*	12 880*	9 800*	9 660	7 820*	7 300			4 140*	4 140*
-5' 0" (1.5 m)	lbs	21,500*	21,500*	30,350*	30,350*	38,600*	38,600*	27,850*	27,850*	21,300*	20,400	16,850*	15,500			10,500*	10,500*
	kg	9 700*	9 700*	13 480*	13 480*	17 820*	17 820*	12 880*	12 880*	9 850*	9 470	7 810*	7 190			4 760*	4 760*
-10' 0" (3.0 m)	lbs	29,000*	29,000*	40,550*	40,550*	36,650*	36,650*	26,850*	26,850*	20,450*	20,300	15,050*	15,050*			12,800*	12,800*
	kg	12 960*	12 960*	17 960*	17 960*	16 950*	16 950*	12 440*	12 440*	9 500*	9 440	7 190*	7 190*			5 770*	5 770*
-15' 0" (4.5 m)	lbs	39,600*	39,600*	45,850*	45,850*	32,200*	32,200*	23,750*	23,750*	17,250*	17,250*					14,600*	14,600*
	kg	17 610*	17 610*	21 280*	21 280*	14 970*	14 970*	11 080*	11 080*	8 170*	8 170*					6 630*	6 630*
-20' 0" (6.0 m)	lbs			32,550*	32,550*	23,500*	23,500*	16,050*	16,050*							13,150*	13,150*
	kg			15 410*	15 410*	11 160*	11 160*	7 840*	7 840*							6 030*	6 030*

Radius of Load																	
10' 8" (3.25 m) Arm with 21' 2" (6.45 m) Boom in High Lift Position and 3,459 lb. (1 569 kg) Bucket (High-Wide Undercarriage)																	
 End	 Side	5' 0" (1.5 m)		10' 0" (3.0 m)		15' 0" (4.5 m)		20' 0" (6.0 m)		25' 0" (7.5 m)		30' 0" (9.0 m)		35' 0" (10.5 m)		Max. Reach	
End	Side	End	Side	End	Side	End	Side	End	Side	End	Side	End	Side	End	Side	End	Side
+35' 0" (10.5 m)	lbs							10,950*	10,950*							8,650*	8,650*
	kg							3 950*	3 950*							3 850*	3 850*
+30' 0" (9.0 m)	lbs									13,600*	13,600*					7,650*	7,650*
	kg									6 380*	6 380*					3 450*	3 450*
+25' 0" (7.5 m)	lbs									15,600*	15,600*	12,000*	12,000*			7,300*	7,300*
	kg									7 170*	7 170*	5 930*	5 930*			3 290*	3 290*
+20' 0" (6.0 m)	lbs					17,050*	17,050*	19,550*	19,550*	18,500*	18,500*	15,650*	15,650*			7,200*	7,200*
	kg					7 920*	7 920*	9 010*	9 010*	8 560*	8 560*	7 400*	7 400*			3 270*	3 270*
+15' 0" (4.5 m)	lbs					29,350*	29,350*	24,850*	24,850*	20,100*	20,100*	16,750*	16,600	9,348	9,348	7,350*	7,350*
	kg					13 660*	13 660*	11 500*	11 500*	9 280*	9 280*	7 740*	7 690	4 240	4 240	3 340*	3 340*
+10' 0" (3.0 m)	lbs			54,500*	54,500*	37,050*	37,050*	27,000*	27,000*	21,200*	21,200*	17,150*	16,600	11,133*	11,133*	7,750*	7,750*
	kg			21 910*	21 910*	17 030*	17 030*	12 490*	12 490*	9 790*	9 790*	7 940*	7 720	5 050*	5 050*	3 520*	3 520*
+5' 0" (1.5 m)	lbs			21,300*	21,300*	39,600*	39,600*	28,350*	28,350*	21,650*	21,450*	17,300*	16,100	11,023	11,023	8,200*	8,200*
	kg			9 230*	9 230*	18 240*	18 240*	13 120*	13 120*	10 010*	9 950	8 000*	7 480	5 000	5 000	3 730*	3 730*
Ground Line	lbs	13,200*	13,200*	23,600*	23,600*	39,200*	39,200*	28,300*	28,300*	21,650*	20,800	17,050*	15,700			9,100*	9,100*
	kg	5 820*	5 820*	10 450*	10 450*	18 080*	18 080*	13 090*	13 090*	10 010*	9 650	7 900*	7 290			4 140*	4 140*
-5' 0" (1.5 m)	lbs	21,500*	21,500*	30,350*	30,350*	36,700*	36,700*	27,050*	27,050*	20,650*	20,350	15,650*	15,450			10,500*	10,500*
	kg	9 700*	9 700*	13 480*	13 480*	16 930*	16 930*	12 520*	12 520*	9 570*	9 460	7 320*	7 190			4 760*	4 760*
-10' 0" (3.0 m)	lbs			40,550*	40,550*	31,550*	31,550*	23,800*	23,800*	17,850*	17,850*	11,850*	11,850*			11,050*	11,050*
	kg			17 960*	17 960*	14 600*	14 600*	11 050*	11 050*	8 340*	8 340*	5 770*	5 770*			5 040*	5 040*
-15' 0" (4.5 m)	lbs			29,100*	29,100*	23,200*	23,200*	17,600*	17,600*	11,750*	11,750*					8,650*	8,650*
	kg			13 620*	13 620*	10 880*	10 880*	8 320*	8 320*	5 760*	5 760*					3 990*	3 990*

Notes: Lifting capacities

- Lifting capacities shown should not be exceeded. Weight of all lifting accessories must be deducted from the above lifting capacities. Lifting capacities for Log Loader attachment include a heel rack, but not grapple. Addition of grapple weight must be deducted from lift capacities.
- Lifting capacities are based on machine standing on firm, uniform supporting surface. User must make allowances for job conditions such as soft or uneven ground.
- Lifting capacities shown do not exceed 75% of minimum tipping loads or 87% of hydraulic capacities. Capacities marked with an asterisk (*) are limited by hydraulic capacities.
- Least stable position is over the side.
- Operator should be fully acquainted with the Operator's Manual & Operating Safety Booklet, furnished by LBX before operating the machine.
- Capacities apply only to the machine as originally manufactured and normally equipped by LBX Company LLC.

STANDARD & OPTIONAL EQUIPMENT

STANDARD EQUIPMENT

CAB

- (12) LED exterior lights; (6) cab, (2) RH corner guard, (2) arm, (2) riser
- Key fob with remote machine light-up functionality; (2) riser step, (3) cab
- SCM air-suspension heated seat, sliding/reclining, adjustable armrests, lumbar support, retractable seat belt, +/- 5 degree tilt
- 4-position tilting consoles with memory position and hydraulic lock-out
- Auto climate control a/c & heat, defrost
- Sirius® Satellite ready sound system w/ AM/FM, MP3 port, USB port, dual speakers & mute button
- Job ticket slot, cup holder, 12-volt accessory outlet, digital clock, 24-volt cigarette lighter, ashtray, dome light, coat hook, high output dual horn, floor mat
- 2-position LED swivel map lights w/ red ambient illumination for safety & night vision compatibility
- High definition LCD monitor w/ full color 7" display
- Anti-theft device
- Single motor dual arm intermittent/continuous windshield wiper w/ washer
- Single pedal travel
- Travel alarm with cancellation switch
- CB radio & antenna mounting provision
- Vandal locks with common key
- On-board diagnostic system
- Rear view camera (full time display)
- RemoteCARE® – telematics
- 2-position sun shade

ENGINE

- EPA Tier IV Isuzu diesel engine, no DPF system to maintain
- Three selectable work modes
- 90 amp alternator
- Common rail fuel injection
- Turbocharger with intercooler
- Neutral safety start
- Idle start
- Glow plug pre-heat
- Auto engine warm-up
- Auto idling system
- One-touch idle
- Dual remote fuel filters with water separation
- Double element air filter with in-cab restriction indicator (SE only)
- Remote, full-flow engine oil filter
- Green plug engine oil drain
- EPF Engine Protection
- Emergency engine stop
- Engine oil & hydraulic oil sample ports
- Battery disconnect switch

HYDRAULICS

- Open-center hydraulic system
- Auto swing priority
- Auxiliary hydraulics for open/close/rotate
- Pre-set auxiliary pump settings
- Control levers pre-wired for auxiliary
- Two-speed w/ auto shift & straight travel
- Attachment cushion valve
- Boom regeneration
- Boom and arm holding valves
- Centralized lube banks

UNDERCARRIAGE

- Sealed and lubricated track chain
- Forestry-style upper roller brackets w/ scrapers
- Planetary drive
- Spring-applied, hydraulic release brake
- 27.5" (700 mm) 2-bar grouser
- Full-length track guards (2 piece, bolt-on)
- HD purpose-built swivel guard belly pan
- HD purpose-built upper belly pans
- HD purpose-built reinforced frame (upper & lower)
- HD purpose-built travel motor covers

UPPERSTRUCTURE

- Rear mounted fuel tank
- HD purpose-built pump & radiator doors
- HD purpose-built tank skin
- HD purpose-built full length catwalks w/ non-skid edge treatment- welded
- HD purpose-built turntable bearing & swing motor
- RH corner guard w/ (2) lights and (2) horns
- Non-skid surface pads
- 15,200 lbs (6 900 kg) Forestry counterweight
- ISO compliant guard and hand rails along upper structure
- Large RH storage box

ATTACHMENT

- HD boom cylinder guard
- Arm cylinder guards

OPTIONAL EQUIPMENT

CAB

- Oregon OSHA/ROPS/WCB compliant forestry cab with sky roof and escape hatch
- Rear-Entry certified forestry cab with 48" hydraulic tilting riser
- 1-1/4" front window polycarbonate - **LBX requires 1-1/4" front window polycarbonate for all machines with a processing head installed.**

UNDERCARRIAGE

- 27.5" (700 mm) single-bar grouser
- 27.5" (700 mm) 3-bar grouser

UPPERSTRUCTURE

- "Hockey Stick" guard for RH front corner guard



TELEMATICS WITH NO SUBSCRIPTION FEE

RemoteCARE® lets you remotely monitor and track machine location, operational performance, working status and periodic maintenance requirements - now at no cost to you. It tracks and records both routine and major service intervals for your machines, giving you more flexibility and control when scheduling maintenance procedures. It also lets you be more proactive if potential failure conditions arise; whenever a diagnostic trouble code (DTC) is detected, a warning message appears on the machine display, and an e-mail alert is automatically sent to you. RemoteCARE also assists in theft prevention by offering 24/7 surveillance and geofencing capabilities.

FREE Subscription Includes:

- ✓ 24/7 Remote Monitoring and Security
- ✓ Machine Location
- ✓ Geo-fence & Curfew Range
- ✓ Actual Fuel Consumption
- ✓ Fuel Levels
- ✓ Hour Meter Reading
- ✓ Radiator Water Temperature
- ✓ Machine Working Time/Idle Time
- ✓ Attachment Working Hours
- ✓ Working Modes
- ✓ Service Maintenance Reminders
- ✓ Service Warnings

REMOTE CARE® APP

Manage your Link-Belt equipment with this user friendly telematics management tool with GPS technology. The RemoteCARE App provides timely and reliable machine utilization.

App features include...

- Machine location
- Fuel efficiency
- DTC notification history
- Fuel consumption
- Analytical snapshots
- Favorite list
- Utilization report
- Idle rate

Download Apple or Android app at lbxco.com/apps for phone & tablet.

LBX Company is the proud maker of quality Link-Belt excavators and is located in Lexington, KY.

#LBX2383 supersedes #LBX2372 Litho in USA 6/18 LBX® and Link-Belt® are registered trademarks. Copyright 2018. All rights reserved. We are constantly improving our products and therefore reserve the right to change designs and specifications.

Link-Belt
FORESTRY
linkbeltforestry.com