

# Hiab XS 211

## Range 19-21 tm



# Hiab XS 211 Basic data

## Technical data

	EP-5 Duo	EP-5 HiDuo	E-6 HiDuo
Max lifting capacity (kNm)	172	183	179
Outreach - hydraulic extensions (m)	15.1	15.1	16.6
Outreach / lifting capacity (m / kg)	2.7 / 6500	2.7 / 6900	2.5 / 7100
	4.7 / 3750	4.7 / 3950	4.5 / 4050
	6.5 / 2520	6.5 / 2700	6.1 / 2800
	8.4 / 1840	8.4 / 1980	8.0 / 1980
	10.5 / 1400	10.5 / 1500	9.9 / 1500
	12.7 / 1120	12.7 / 1200	12.0 / 1180
	15.0 / 940	15.0 / 1020	14.2 / 960
	-	-	16.5 / 820
Slewing angle	410°	410°	410°
Height in folded position (mm)	2386	2386	2386
Width in folded position (mm)	2500	2500	2500
Installation space needed (mm)	1060	1060	1085
Weight - "standard" crane without stabilizers (kg)	2690	2700	2840
Weight - stabilizer equipment (kg)	340 - 402	340 - 402	340 - 402

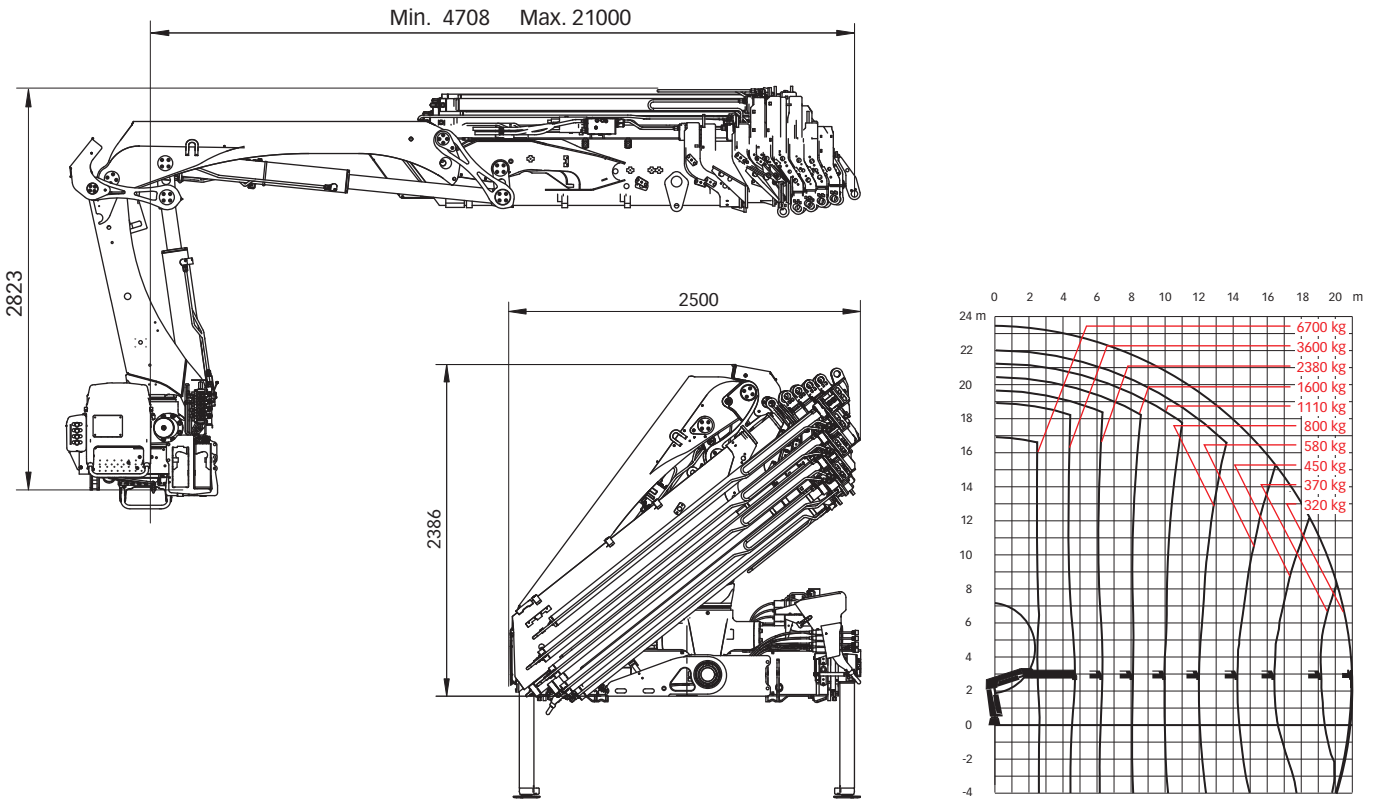
## Technical data

	EP-4 HiPro	EP-5 HiPro	E-6 HiPro	E-6 HiPro*	E-8 HiPro
Max lifting capacity (kNm)	193	176	173	173	158
Outreach - hydraulic extensions (m)	12.7	15.1	16.6	24.7	21.0
Outreach / lifting capacity (m / kg)	2.5 / 7400	2.7 / 7100	2.5 / 7200	2.4 / 7500	2.6 / 6700
	4.6 / 4300	4.7 / 4100	4.5 / 4200	4.5 / 4000	4.7 / 3600
	6.4 / 2960	6.5 / 2800	6.1 / 2920	6.1 / 2680	6.3 / 2380
	8.3 / 2200	8.4 / 2060	8.0 / 2080	7.9 / 1880	8.1 / 1600
	10.4 / 1700	10.5 / 1580	9.9 / 1580	9.8 / 1380	10.0 / 1100
	12.6 / 1400	12.7 / 1260	12.0 / 1240	11.8 / 1060	12.0 / 800
	-	15.0 / 1060	14.2 / 1000	13.9 / 860	14.1 / 580
	-	-	16.5 / 860	16.1 / 720	16.3 / 450
	-	-	-	-	18.6 / 370
	-	-	-	-	20.9 / 320
Outreach / lifting capacity, with jib (m / kg)	-	-	-	19.1 / 140	-
	-	-	-	20.8 / 110	-
	-	-	-	22.7 / 90	-
	-	-	-	24.6 / 80	-
Slewing angle	410°	410°	410°	410°	410°
Height in folded position (mm)	2386	2385	2385	2666	2385
Width in folded position (mm)	2500	2500	2500	2500	2500
Installation space needed (mm)	1060	1162	1192	1240	1247
Weight - "standard" crane without stabilizers (kg)	2630	2760	2900	3380**	3520
Weight - stabilizer equipment (kg)	340 - 402	334 - 422	334 - 422	334 - 422	334 - 422
Weight - jib (kg)	-	-	-	450	-

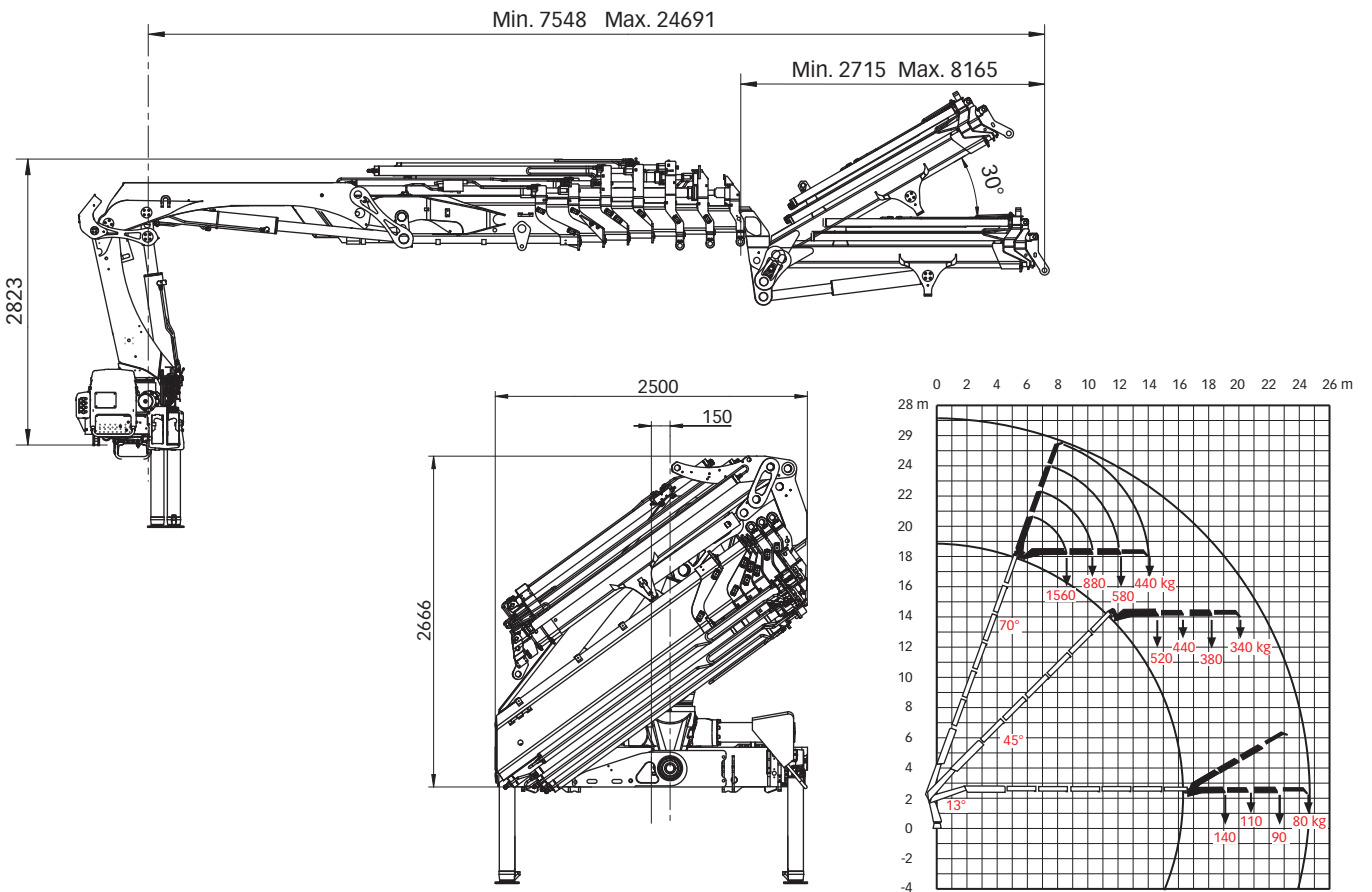
\* All XS 211 ordered with a jib are equipped with an extra sturdy outer boom system.

\*\* Jib 45X-3 excluded.

**Hiab XS 211 E-8 HiPro**



**Hiab XS 211 E-6 HiPro jib 45X-3**



**Disclaimer.** Hiab cranes have been built to meet the highest standards of safety and service life and have been thoroughly tested. Strength calculations for this model have been carried out in accordance with EN13001 in fatigue class S2. Cargotec's certified Quality Assurance System complies with ISO 9001. Some of the items in our literature may be extra equipment. Certain applications may require an official permit. We reserve the right to change technical specifications without prior notice. Hiab cranes produced for EU-countries are CE-marked and comply with the European Standard EN 12999.

**Cargotec** improves the efficiency of cargo flows by offering solutions for the loading and unloading of goods on land and at sea – wherever cargo is on the move. Cargotec's main daughter brands for cargo handling Hiab, Kalmar and MacGregor are global market leaders in their fields. [www.cargotec.com](http://www.cargotec.com)

