

## HK 4571

HK45-serie loaders are designed for professional timber contractors or for woodland estates.

These loaders have an excellent geometry and manoeuvrability.

The loader can be mounted on a trailer drawbar, on tractor chassis or even to the 3 point linkage of the tractor.

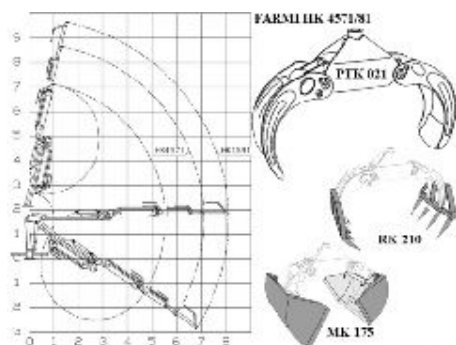
-HK4571 loader has a single extension (with 7,1 m outreach) and excellent working geometry

-Wide angle joint as standard

-Slewing device is equipped with 4 cylinders which guarantees plenty of slewing torque (17,4 kNm)

-Several control valve options

-Better centralizing and strong structure b



Technical data	HK 4571
Gross lifting torque, kNm (180 / 195 bar)	45.1 / 48.8
Max. reach, m	7,1
Lifting capacity, kg / 4 m	845 / 915
Lifting capacity, kg / max reach	455 / 490
Slewing torque, kNm	17,4
Weight of hydraulic legs, kg	267
Weight (incl.grapple and rotator), kg	1045
Recommend pump capacity, L/min	30 - 60
Working Pressure	180
Control valve (optional EHC)	HPC