

Hiab XS 144 L

Range 14-16 tm

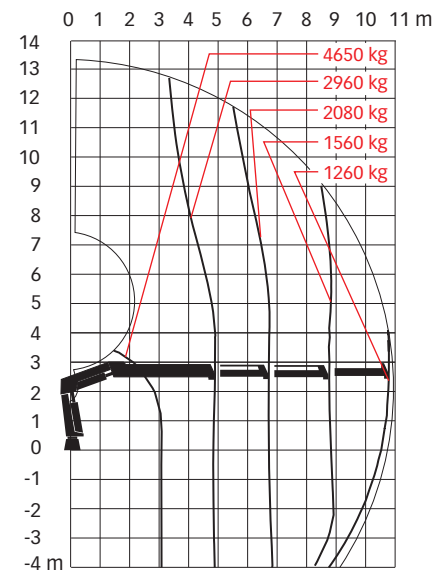
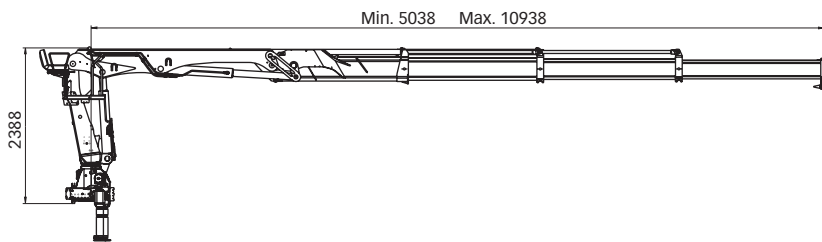


Hiab XS 144 L Basic data

Technical data

	DLS-1 Pro	DLS-2 Pro	DLS-3 Pro	DLS-4 Pro	DLS-5 Pro
Max. lifting capacity (kNm)	153	148	142	139	135
Outreach - hydraulic extensions (m)	6.7	8.8	10.9	13.1	15.5
Outreach - manual extensions (m)	-	-	-	-	-
Outreach / lifting capacity (m / kg)	3.0 / 5100	3.0 / 4950	3.1 / 4650	3.1 / 4550	3.1 / 4450
	4.7 / 3300	4.8 / 3150	4.9 / 2960	5.0 / 2800	5.1 / 2680
	6.5 / 2400	6.6 / 2240	6.7 / 2080	6.8 / 1960	6.9 / 1840
	-	8.6 / 1720	8.7 / 1560	8.7 / 1460	8.8 / 1340
	-	-	10.7 / 1260	10.8 / 1140	10.9 / 1020
	-	-	-	13.0 / 940	13.1 / 820
	-	-	-	-	15.3 / 700
Slewing angle	415°	415°	415°	415°	415°
Height with horizontal boom (mm)	2388	2388	2388	2529	2529
Installation space needed (mm)	820	820	820	820	820
Weight - "standard" crane without stabilizers (kg)	1545	1675	1785	1885	1975
Weight - stabilizer equipment (kg)	255 - 385	255 - 385	255 - 385	255 - 385	255 - 385
Weight - high seat (kg)	100	100	100	100	100

Hiab XS 144 DLS-3 Pro



Disclaimer. Hiab cranes have been built to meet the highest standards of safety and service life and have been thoroughly tested. Strength calculations for this model have been carried out in accordance with EN13001 in fatigue class S2. Cargotec's certified Quality Assurance System complies with ISO 9001. Some of the items in our literature may be extra equipment. Certain applications may require an official permit. We reserve the right to change technical specifications without prior notice. Hiab cranes produced for EU-countries are CE-marked and comply with the European Standard EN 12999.

Cargotec improves the efficiency of cargo flows by offering solutions for the loading and unloading of goods on land and at sea – wherever cargo is on the move. Cargotec's main daughter brands for cargo handling Hiab, Kalmar and MacGregor are global market leaders in their fields. www.cargotec.com