



Made in Germany

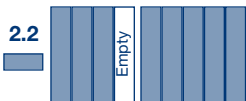








**WT 200 *e.tronic***  
Product Information

Radius [m]		25.0	30.0	32.5	35.0	37.5	40.0	42.5	45.0	47.5	50.0	52.5	55.0	57.5	60.0	62.5	65.0
Jib length [m]	65.0 2.5 - 18.5	5.7	4.7	4.2	3.8	3.5	3.3	3.0	2.8	2.6	2.5	2.3	2.2	2.0	1.9	1.8	1.7
	62.5 2.5 - 22.7	7.2	5.9	5.4	4.9	4.5	4.2	3.9	3.6	3.4	3.2	3.0	2.8	2.7	2.5	2.4	
	60.0 2.5 - 23.9	7.6	6.2	5.7	5.2	4.8	4.5	4.1	3.9	3.6	3.4	2.3	3.0	2.9	2.7		
	57.5 2.5 - 24.8	7.9	6.5	5.9	5.4	5.0	4.7	4.3	4.1	3.8	3.6	3.4	3.2	3.0			
	55.0 2.5 - 25.6	8.0	6.7	6.1	5.6	5.2	4.8	4.5	4.2	3.9	3.7	3.5	3.3				
	52.5 2.5 - 26.8	8.0	7.1	6.5	6.0	5.5	5.1	4.8	4.5	4.2	3.9	3.7					
	50.0 2.5 - 27.3	8.0	7.2	6.6	6.1	5.6	5.2	4.8	4.5	4.3	4.0						
	47.5 2.5 - 27.7	8.0	7.3	6.7	6.2	5.7	5.3	4.9	4.6	4.3							
	45.0 2.5 - 28.5	8.0	7.6	6.9	6.4	5.9	5.5	5.1	4.8								
	42.5 2.5 - 28.6	8.0	7.6	6.9	6.4	5.9	5.5	5.1									
	40.0 2.5 - 28.9	8.0	7.7	7.0	6.5	6.0	5.6										
	37.5 2.5 - 29.0	8.0	7.7	7.0	6.5	6.0											
	35.0 2.5 - 29.1	8.0	7.7	7.1	6.5												
	32.5 2.5 - 29.2	8.0	7.8	7.1													
	30.0 2.5 - 29.3	8.0	7.8														
	25.0 2.5 - 25.0	8.0															

The loads relate to 40m hook travel. For longer hook travel distances, the loads are reduced by the additional weight of the hoist rope (with 2 fall rope = 2.6kg/m hook travel).

## Arrangement of concrete counterweights with hoist gear HFU 45-40

65.0m jib		62.5m jib		60.0m jib		57.5m jib		55.0m jib			
9 x 2.7t		9 x 2.7t		8 x 2.7t		8 x 2.7t		7 x 2.7t			
											
to the tower →		to the tower →		to the tower →		to the tower →		to the tower →			
26.5t		26.5t		23.8t		23.8t		21.1t			
# Assembly weight					Total weight						
52.5m jib		50.0m jib		47.5m jib		45.0m jib		42.5m jib			
7 x 2.7t		6 x 2.7t		6 x 2.7t		5 x 2.7t		5 x 2.7t			
											
to the tower →		to the tower →		to the tower →		to the tower →		to the tower →			
21.1t		18.4t		18.4t		15.7t		15.7t			
Total weight					Total weight						
40.0m jib		37.5m jib		35.0m jib		32.5m jib		30.0m jib		25.0m jib	
4 x 2.7t		4 x 2.7t		4 x 2.7t		3 x 2.7t		3 x 2.7t		2 x 2.7t	
											
to the tower →		to the tower →		to the tower →		to the tower →		to the tower →		to the tower →	
13.0t		13.0t		13.0t		10.3t		10.3t		7.6t	
Total weight						Total weight					

No concrete counterweights are to be fitted in the positions with a white background.

## **The WT 200 e.tronic tower crane. Modern. Universal. And top-notch.**

### **Transport.**

#### **Just two trucks for the entire crane.**

With our WT 200 e.tronic you can really save transport capacity, because the slewing unit, the 45' counter jib fitted with container connectors and the 60m jib are transported on only two trucks. Even small parts are allocated a set place in the units and are automatically secured. This also means that the compact design of the WT 200 e.tronic ensures space-saving storage and enables loading in just one lift per unit.

### **Assembly.**

#### **Child's play for adults.**

Our experts know that the secret of a quick and easy assembly lies in the detail. And they know what's really important. That's why, with the WT 200 e.tronic, you can expect a crane with jib stays already pre-assembled and positioned or with connections that are accessible without additional erection platforms. Once it has been assembled, the current configuration is simply stored in the e.tronic control. It's as simple as that.

### **Maintenance.**

#### **High on reliability.**

We want you to be able to focus on what really matters. That's why you can rely on your WT 200 e.tronic even if there is a fault somewhere - because not only are any faults and malfunctions displayed on the touch screen panel, but also all operating and error data can be retrieved on any PC with a modem and the corresponding software. By the way, as soon as the reservoir of the e.tronic-controlled central lubrication system is empty, an SMS is automatically sent to a pre-selected service number.

### **Control.**

#### **When intelligence meets safety.**

The WT 200 e.tronic is equipped with the e.tronic programmable logic control system, featuring 230 V powerful relay switches which are rated category AC 4 - so operational wear and tear is not an issue here. The safety-related measuring systems are fitted in duplicate and thus ensure that DIN EN 954/3 is complied with. And what's more, since the frequency converter controlled absolute encoders are identical for all drives, they are interchangeable. The spacious, side-mounted operator cab ensures the crane operator is comfortable and has clear visibility. It also features a touch screen panel which provides him with all the important data he requires - in the language of his choice, of course.

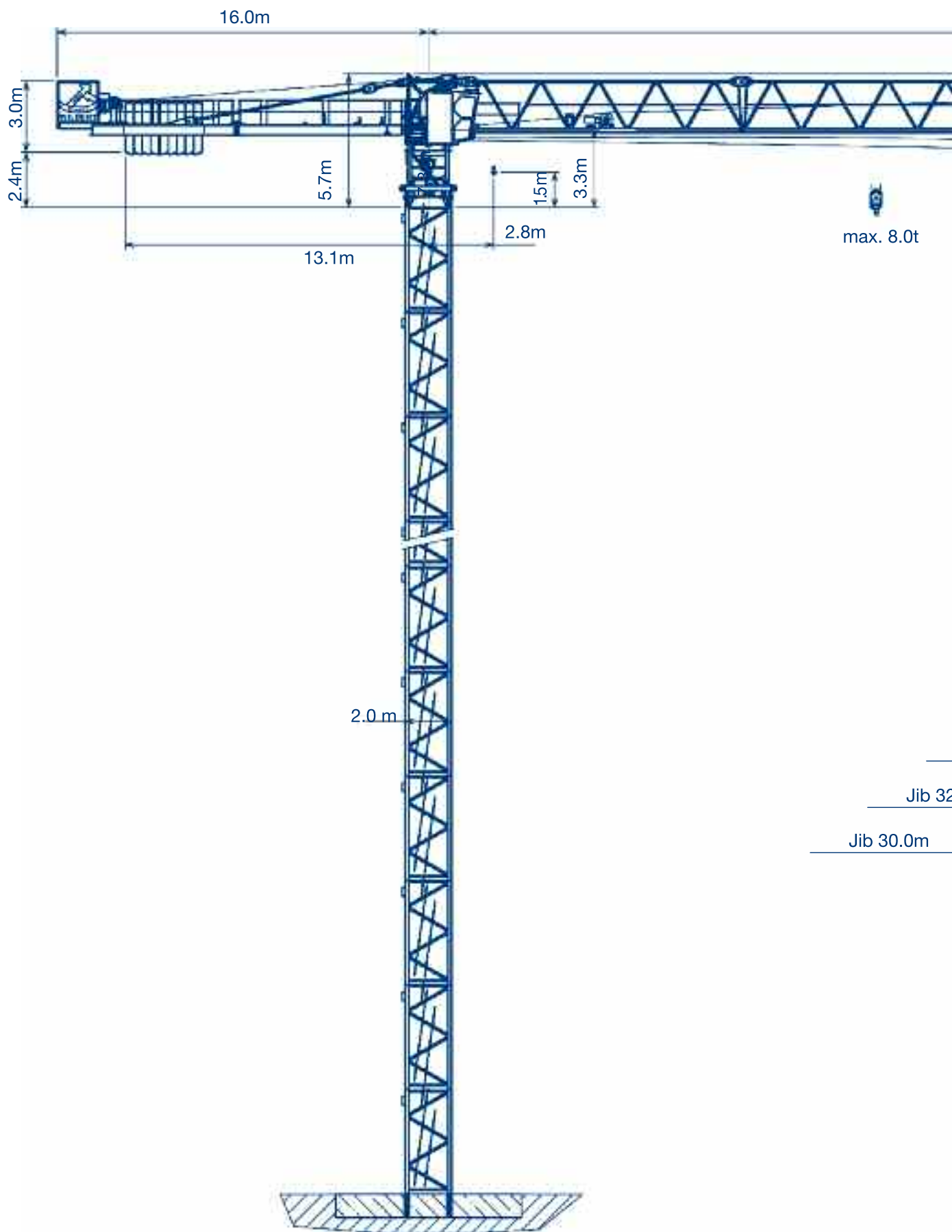
### **Modular system.**

#### **Just do your own thing.**

The WT 200 e.tronic is just waiting to fulfil your requirements. Just the right jib length? No problem - it can easily be adapted in two and half metre lengths. Change the illuminated display boards? Nothing simpler than that - just remove the diffusing panel and change the logo. And the slewing unit? This is assembled on the 2m wide, 6.5m long tower elements, which are also available in various intermediate lengths. Foundation anchors and expandable cross frames with assembly optimised elements are also available for flexible use as base elements.

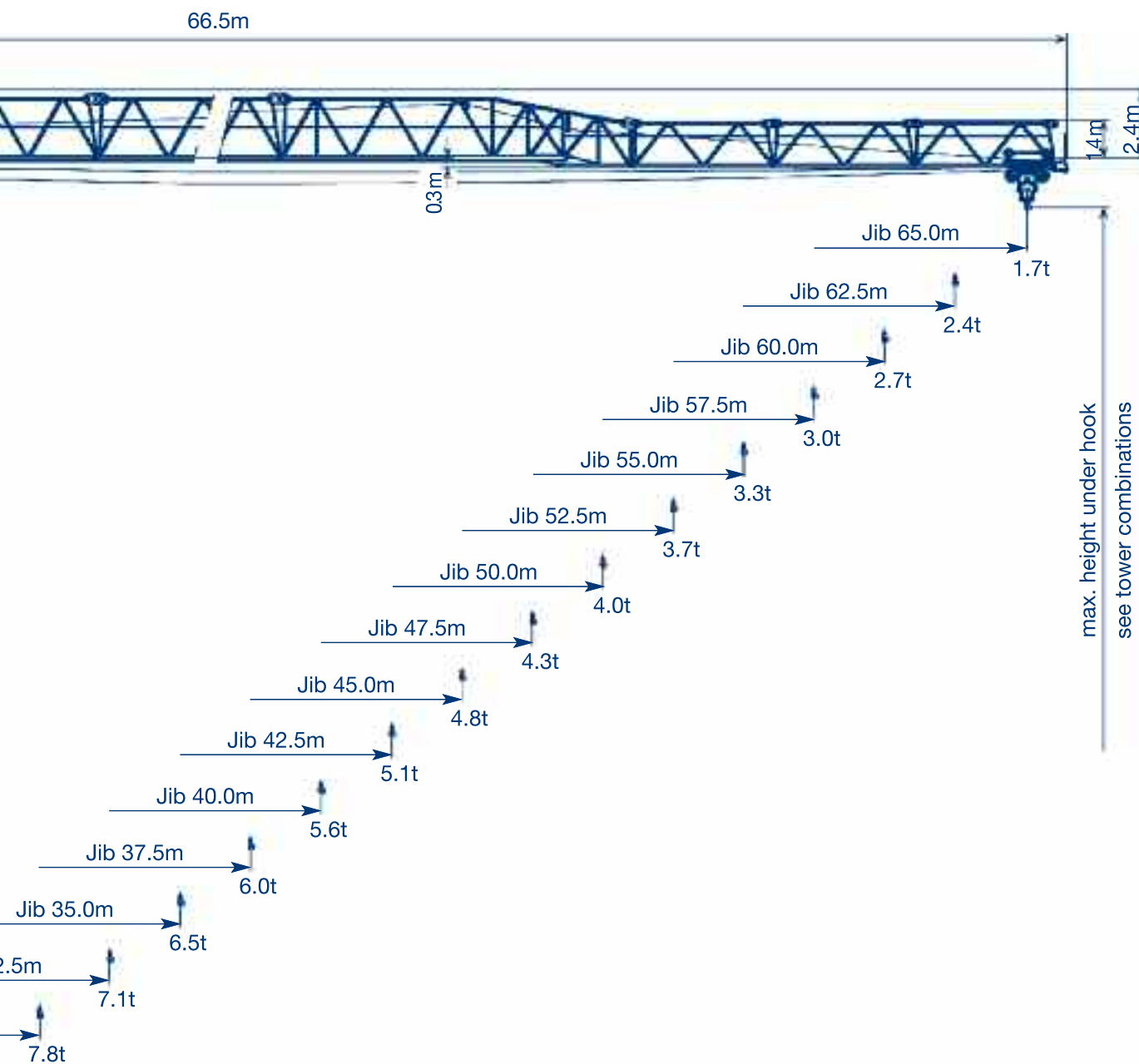
The real size of the WT 200 e.tronic is demonstrated by 92.5m, realised with standard tower elements. Higher freestanding under hook heights are possible with special tower elements. Just ask!

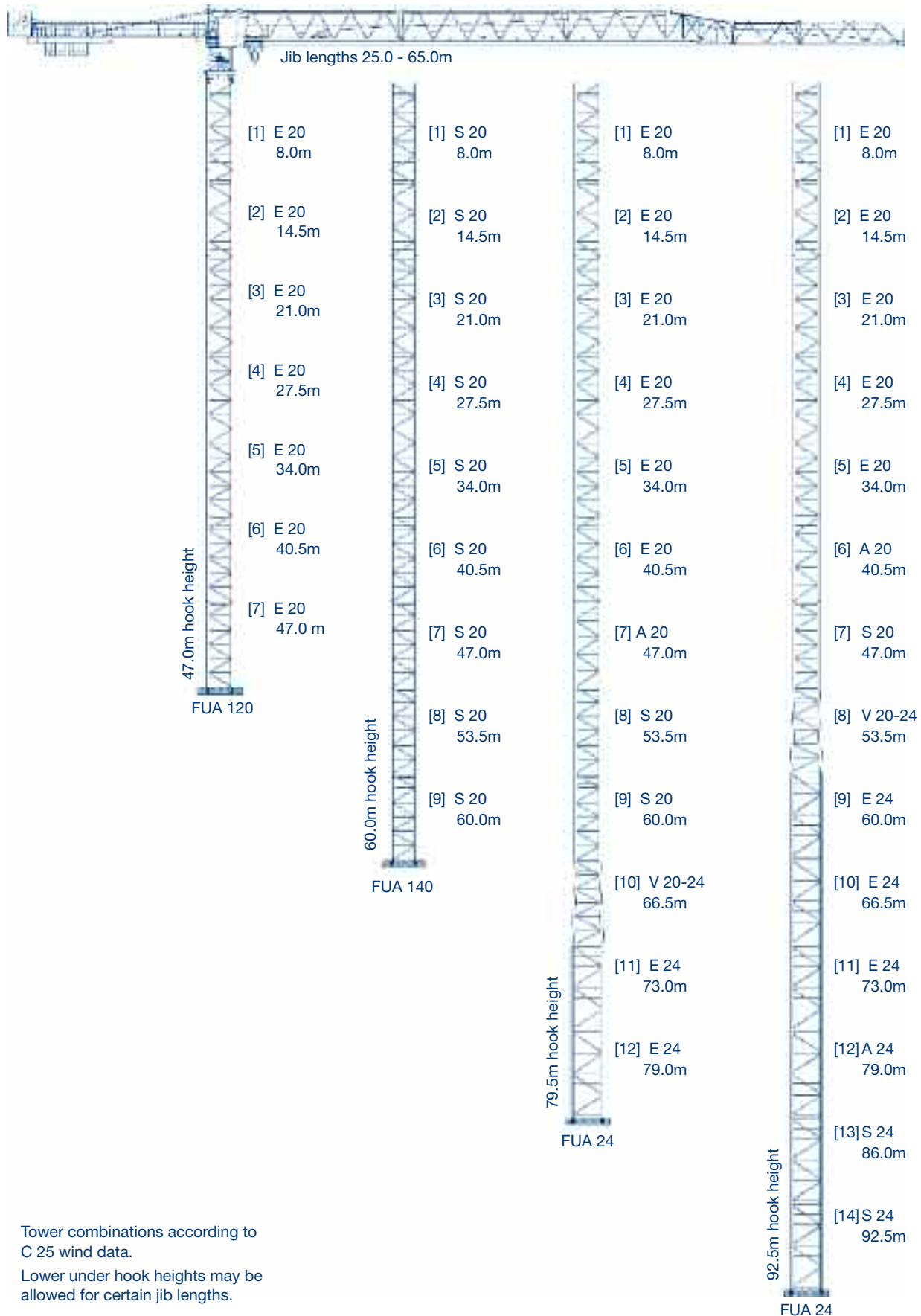
WILBERT Tower Cranes  
Layout drawing



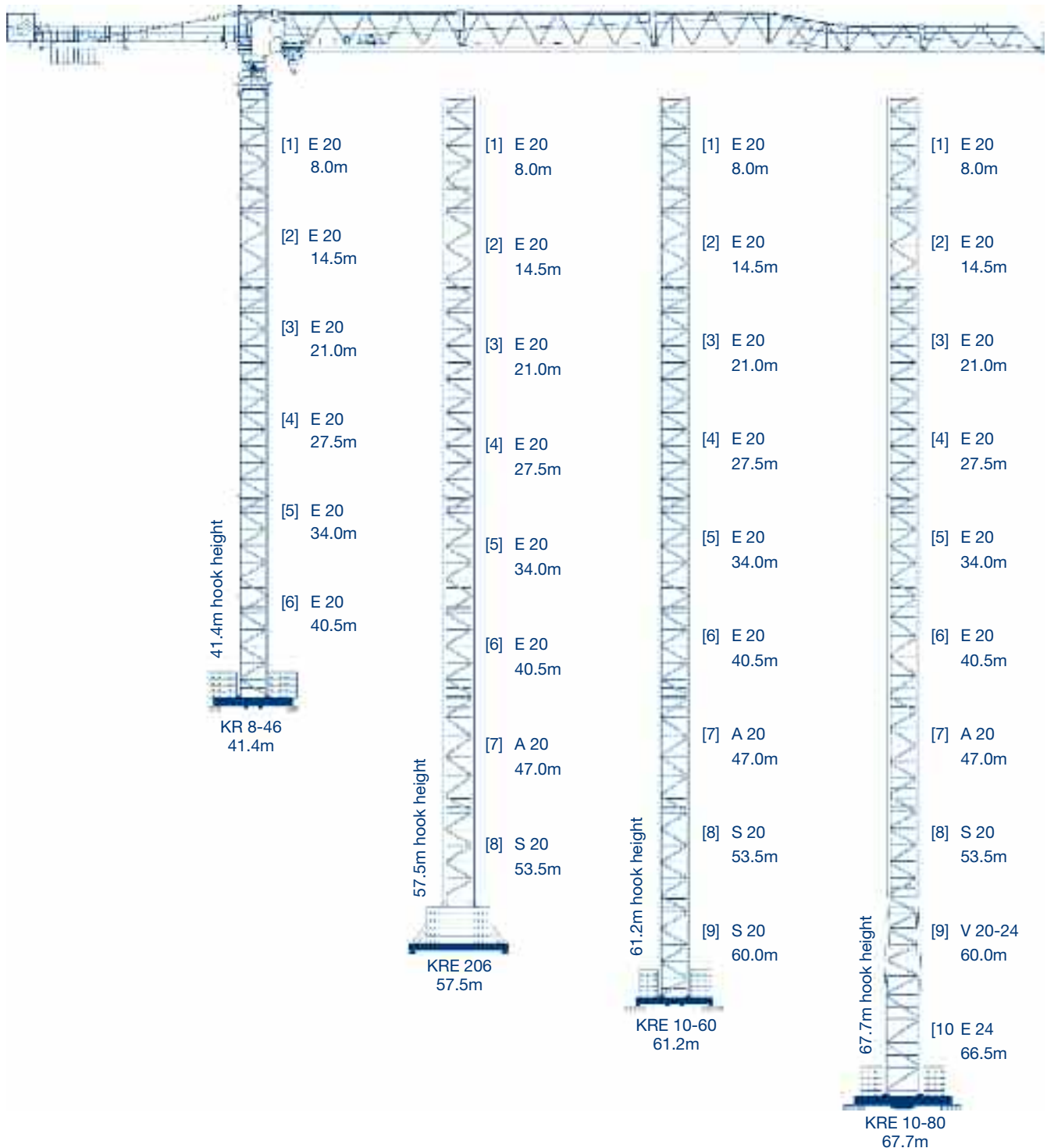
Jib 32

Jib 30.0m



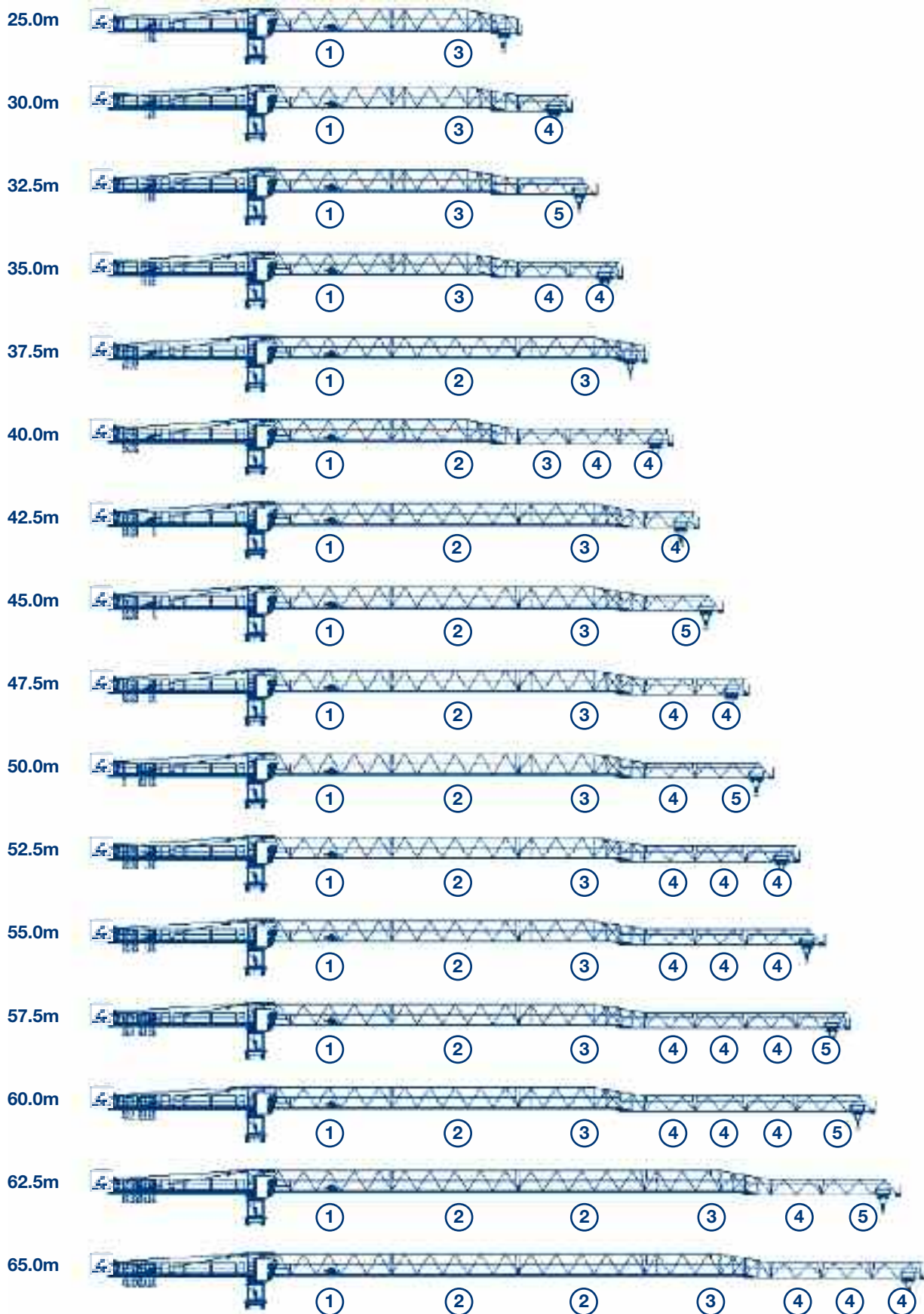





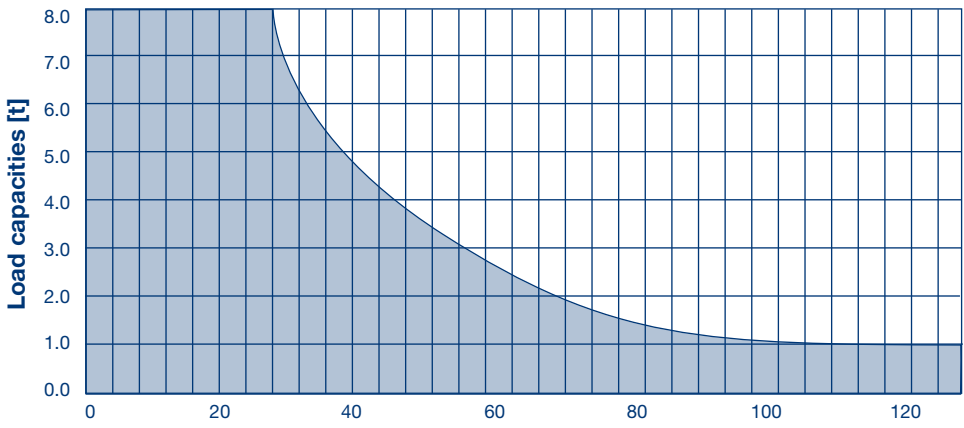

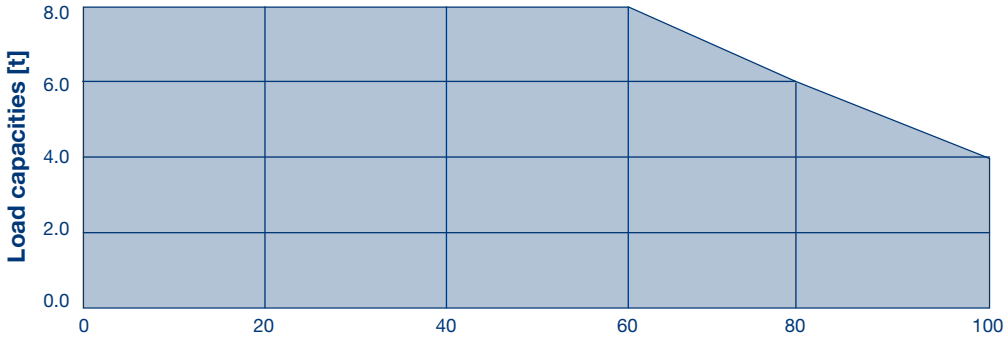

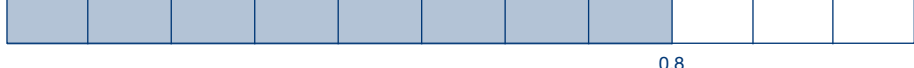


Tower combinations according to  
C 25 wind data.

Lower under hook heights may be  
allowed for certain jib lengths.



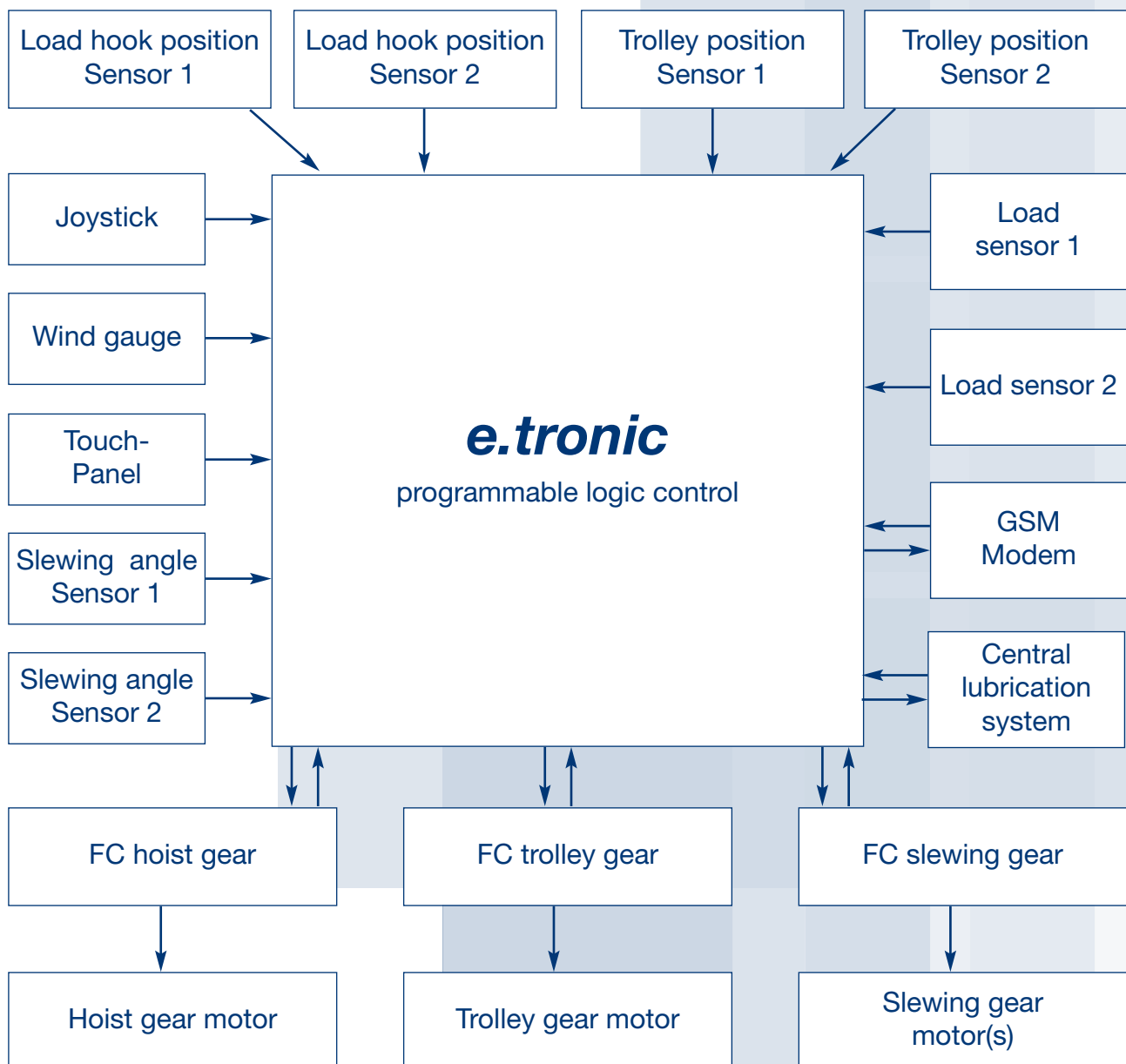



















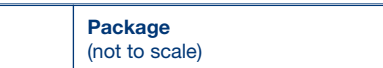
Drive [Typ]	Operating speeds Load capacity	Hook travel max. [m]	Power rating [kW]
HFU 45-40	Hoisting	160	45
	 <p>Load capacities [t]</p> <p>Operating speeds [m/min]          (referring to the 3rd layer on the hoist rope drum)</p>		
TW	Moving trolley		7.5
	<p>Continuous acceleration</p>  <p>Load capacities [t]</p> <p>Operating speeds [m/min]</p>		
DW	Slewing		2 x 5.5
	<p>Continuous acceleration</p>  <p>Operating speeds [m/min]</p>		

**Total connected load**



**58.0 kVA**

Total connected load at utilisation factor 0.8



Pos.	Qty.	Description	Package (not to sale)	Length [m]	Width [m]	Height [m]	Weight [kg]	Volume [m³]
1	1	Tower head section compl. with various stay rods		5.67	2.46	2.15	7,890	29.99
2	1	Cab with cab platform		3.28	1.90	2.45	1,360	15.27
3	1	Counter jib 1		7.42	2.44	0.98	2,310	17.74
4	1	Counter jib 2		6.40	2.44	0.79	2,410	12.34
5	1	Machine platform HFU 45-40 with hoist rope		2.91	2.50	2.03	3,110	14.77
6	2	Stay rod 1		1.82	0.11	0.32	138	0.06
7	2	Stay rod 2		8.23	0.11	0.32	294	0.29
8	1	Jib section 1 with trolley gear		12.83	1.52	2.39	4,000	46.61
9	0-2 *	Jib section 2		12.91	1.50	2.37	2,425	45.90
10	1	Jib section 3		12.85	1.46	2.60	2,260	48.78
11	0-4*	Jib section 4		5.31	1.10	1.70	585	9.93
12	0-1*	Jib section 5		7.71	1.10	1.68	550	14.25
13	1	Stay lug (jib)		0.91	0.21	0.37	250	0.07
14	1	Rope swivel crossbeam		0.68	1.04	0.39	135	0.28
15	1	Trolley with load hook		1.61	1.62	1.59	780	4.15
16	1	Railings (loose parts)		2.50	0.90	1.00	279	2.25
17	1	Concrete counterweight (under machine platform)		1.30	2.04	0.71	2,200	1.88
18	3-9*	Concrete counterweight		0.36	1.41	2.26	2,700	1.15

## Transport units

Pos.	Description	Package (not to scale)	Weight [kg]	Volume [m³]
A	<b>Transport unit 1</b> Counter jib with counterweight 2.2t and machine platform, tower head section, cab with cab platform, trolley with load hook, various stays		20,600	98.64
B	<b>Transport unit 2</b> 60m jib (jib 1 with jib 5, jib 2 with 2x jib 4, jib 3 with jib 5), rope swivel crossbeam, railings, minor items		11,400	102.49

**WILBERT Turmkrane GmbH**

Lohrgraben 2  
55444 Waldlaubersheim  
Germany  
Phone: +49 (0)6707 6668-0  
Fax: +49 (0)6707 6668-1490  
Web: [www.wilbert.de](http://www.wilbert.de)  
Email: [info@wilbert.de](mailto:info@wilbert.de)

presented by: