



Made in Germany



WT 320 *e.tronic*
Product Information

Radius [m]		25.0	30.0	32.5	35.0	37.5	40.0	42.5	45.0	47.5	50.0	52.5	55.0	57.5	60.0	62.5	65.0	67.5	70.0	72.5	75.0
Jib length [m]	75.0 3.0 - 23.7	11.3	9.2	8.4	7.7	7.1	6.6	6.1	5.7	5.3	5.0	4.7	4.4	4.2	4.0	3.7	3.5	3.4	3.2	3.0	2.9
	72.5 3.0 - 24.5	11.8	9.6	8.7	8.0	7.4	6.9	6.4	6.0	5.6	5.2	4.9	4.6	4.4	4.1	3.9	3.7	3.5	3.4	3.2	3.2
	70.0 3.0 - 26.3	12.0	10.3	9.4	8.6	7.9	7.4	6.8	6.4	6.0	5.6	5.3	5.0	4.7	4.4	4.2	4.0	3.8	3.6		
	67.5 3.0 - 26.9	12.0	10.5	9.6	8.8	8.1	7.5	7.0	6.6	6.1	5.8	5.4	5.1	4.8	4.6	4.3	4.1	3.9			
	65.0 3.0 - 27.4	12.0	10.7	9.8	9.0	8.3	7.7	7.2	6.7	6.3	5.9	5.5	5.2	4.9	4.7	4.4	4.2				
	62.5 3.0 - 27.7	12.0	10.9	9.9	9.1	8.4	7.8	7.3	6.8	6.4	6.0	5.6	5.3	5.0	4.7	4.5					
	60.0 3.0 - 28.4	12.0	11.2	10.2	9.4	8.7	8.1	7.5	7.0	6.6	6.2	5.8	5.5	5.2	4.9	4.9					
	57.5 3.0 - 29.0	12.0	11.4	10.5	9.6	8.9	8.2	7.7	7.2	6.7	6.3	5.9	5.6	5.3	5.3						
	55.0 3.0 - 29.4	12.0	11.6	10.6	9.8	9.0	8.4	7.8	7.3	6.8	6.4	6.0	5.7								
	52.5 3.0 - 29.6	12.0	11.7	10.7	9.9	9.1	8.4	7.9	7.4	6.9	6.5	6.1									
	50.0 3.0 - 30.4	12.0	12.1	11.1	10.2	9.4	8.7	8.1	7.6	7.1	6.7										
	47.5 3.0 - 30.7	12.0	12.2	11.2	10.3	9.5	8.8	8.2	7.7	7.2											
	45.0 3.0 - 31.1	12.0	12.4	11.3	10.4	9.6	9.0	8.3	7.8												
	42.5 3.0 - 31.3	12.0	12.5	11.4	10.5	9.7	9.0	8.4													
	40.0 3.0 - 31.6	12.0	12.6	11.5	10.6	9.8	9.1														
	37.5 3.0 - 31.9	12.0	12.7	11.6	10.7	9.9															
	35.0 3.0 - 32.1	12.0	12.8	11.7	10.8																
	32.5 3.0 - 32.3	12.0	12.9	11.8																	
30.0 3.0 - 30.0	12.0	12.9																			
25.0 3.0 - 25.0	12.0																				

The loads relate to 40m hook travel. For longer hook travel distances, the loads are reduced by the additional weight of the hoist rope (with 4 fall rope = 5.2kg/m hook travel).

WT 320 e.tronic load table in 2 fall operation with 2 fall load hook

Radius [m]		25.0	30.0	32.5	35.0	37.5	40.0	42.5	45.0	47.5	50.0	52.5	55.0	57.5	60.0	62.5	65.0	67.5	70.0	72.5	75.0
Jib length [m]	75.0 3.0 - 23.7	6.0	6.0	6.0	6.0	6.0	6.0	6.0	6.0	5.7	5.4	5.1	4.8	6.4	4.4	4.1	3.9	3.8	3.6	3.4	3.3
	72.5 3.0 - 24.5	6.0	6.0	6.0	6.0	6.0	6.0	6.0	6.0	6.0	5.6	5.3	5.0	4.8	4.5	4.3	4.1	3.9	3.8	3.6	3.6
	70.0 3.0 - 26.3	6.0	6.0	6.0	6.0	6.0	6.0	6.0	6.0	6.0	6.0	5.8	5.5	5.2	4.9	4.7	4.5	4.3	4.1		
	67.5 3.0 - 26.9	6.0	6.0	6.0	6.0	6.0	6.0	6.0	6.0	6.0	6.0	5.9	5.6	5.3	5.1	4.8	4.6	4.4			
	65.0 3.0 - 27.4	6.0	6.0	6.0	6.0	6.0	6.0	6.0	6.0	6.0	6.0	6.0	5.7	5.4	5.2	4.8	4.7				
	62.5 3.0 - 27.7	6.0	6.0	6.0	6.0	6.0	6.0	6.0	6.0	6.0	6.0	6.0	6.0	5.8	5.5	5.2	5.0				
	60.0 3.0 - 28.4	6.0	6.0	6.0	6.0	6.0	6.0	6.0	6.0	6.0	6.0	6.0	6.0	6.0	5.7	5.4					
	57.5 3.0 - 29.0	6.0	6.0	6.0	6.0	6.0	6.0	6.0	6.0	6.0	6.0	6.0	6.0	6.0	5.8						
	55.0 3.0 - 29.4	6.0	6.0	6.0	6.0	6.0	6.0	6.0	6.0	6.0	6.0	6.0	6.0	6.0	6.0	6.0					
	52.5 3.0 - 29.6	6.0	6.0	6.0	6.0	6.0	6.0	6.0	6.0	6.0	6.0	6.0	6.0								
	50.0 3.0 - 30.4	6.0	6.0	6.0	6.0	6.0	6.0	6.0	6.0	6.0	6.0	6.0									
	47.5 3.0 - 30.7	6.0	6.0	6.0	6.0	6.0	6.0	6.0	6.0	6.0	6.0										
	45.0 3.0 - 31.1	6.0	6.0	6.0	6.0	6.0	6.0	6.0	6.0	6.0											
	42.5 3.0 - 31.3	6.0	6.0	6.0	6.0	6.0	6.0	6.0	6.0												
	40.0 3.0 - 31.6	6.0	6.0	6.0	6.0	6.0	6.0														
	37.5 3.0 - 31.9	6.0	6.0	6.0	6.0	6.0															
	35.0 3.0 - 32.1	6.0	6.0	6.0	6.0																
	32.5 3.0 - 32.3	6.0	6.0	6.0																	
30.0 3.0 - 30.0	6.0	6.0																			
25.0 3.0 - 25.0	12.0																				

The loads relate to 40m hook travel. For longer hook travel distances, the loads are reduced by the additional weight of the hoist rope (with 2 fall rope = 2.6kg/m hook travel).

The WT 320 *e.tronic* tower crane. Flat top. Strong. And well-made.

Transport. **Everything has its place.**

The WT 320 *e.tronic* works flat out for you. The complete slewing unit together with the 75m jib can be made ready for transport on three trucks. The 40' long counter jib is fitted with container connectors, enabling it to be transported on any standard chassis. Even small parts are allocated a set place and are, for the most part, secured automatically. Naturally, the compact design ensures that storage of the whole crane is space saving. And it can be loaded in just one lift per unit.

Assembly. **Simple, from the very beginning.**

To start out effectively, optimal conditions are required - with nothing getting in the way. That's why, with the WT 320 *e.tronic*, you can expect a crane with jib stays already pre-assembled and positioned or with connections that are accessible without additional erection platforms. And, of course, the assembly weights can very easily be adapted to the capacity of the assembly crane. Once your new workmate has been assembled, the current configuration is simply stored in the *e.tronic* control. And to program the maximum load limit switch, you need only one known test weight.

Maintenance. **Cleverly designed. Through and through.**

We use innovations and the latest technology. With the WT 320 *e.tronic*, tried and tested high volume components ensure reliability. The sophisticated error diagnostics system displays any faults or malfunctions on the touch screen panel. In many cases, these can be rectified by the crane operator himself. The operating and error data can be retrieved on any PC with a modem and the corresponding software. When the reservoir of the *e.tronic*-controlled central lubrication system is empty, an SMS is automatically sent to a pre-selected service number.

Control. **You're off the hook.**

The WT 320 *e.tronic* is equipped with the *e.tronic* programmable logic control system, featuring 230 V powerful relay switches which are rated category AC 4 - so operational wear and tear is not an issue here. The safety-related measuring systems are fitted in duplicate and thus ensure that DIN EN 954/3 is complied with. And what's more, since the frequency converter controlled absolute encoders are identical for all drives, they are completely interchangeable.

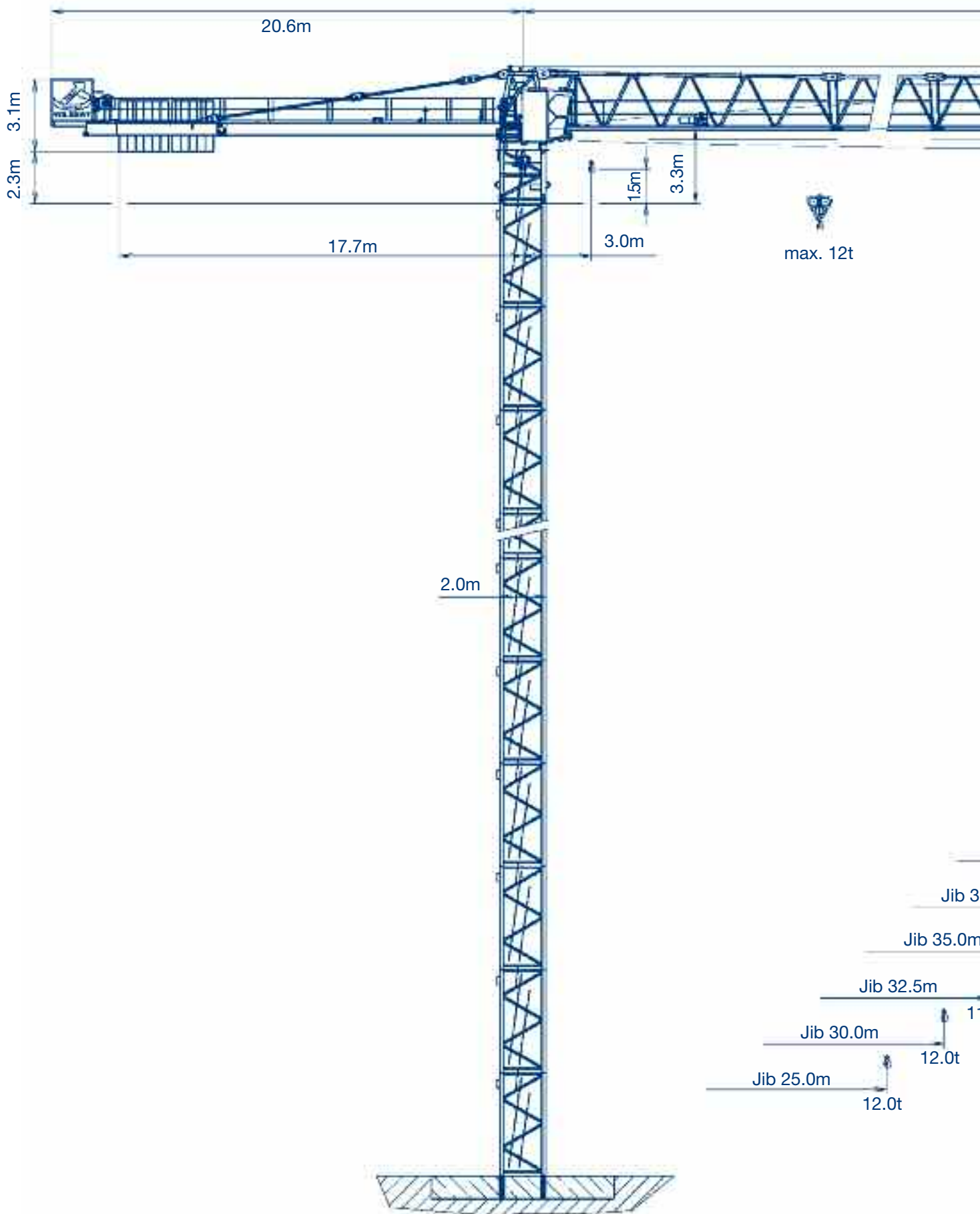
The spacious, side-mounted operator cab ensures the crane operator is comfortable and has clear visibility. It also features a touch screen panel which provides him with all the important data he requires - in the language of his choice, of course.

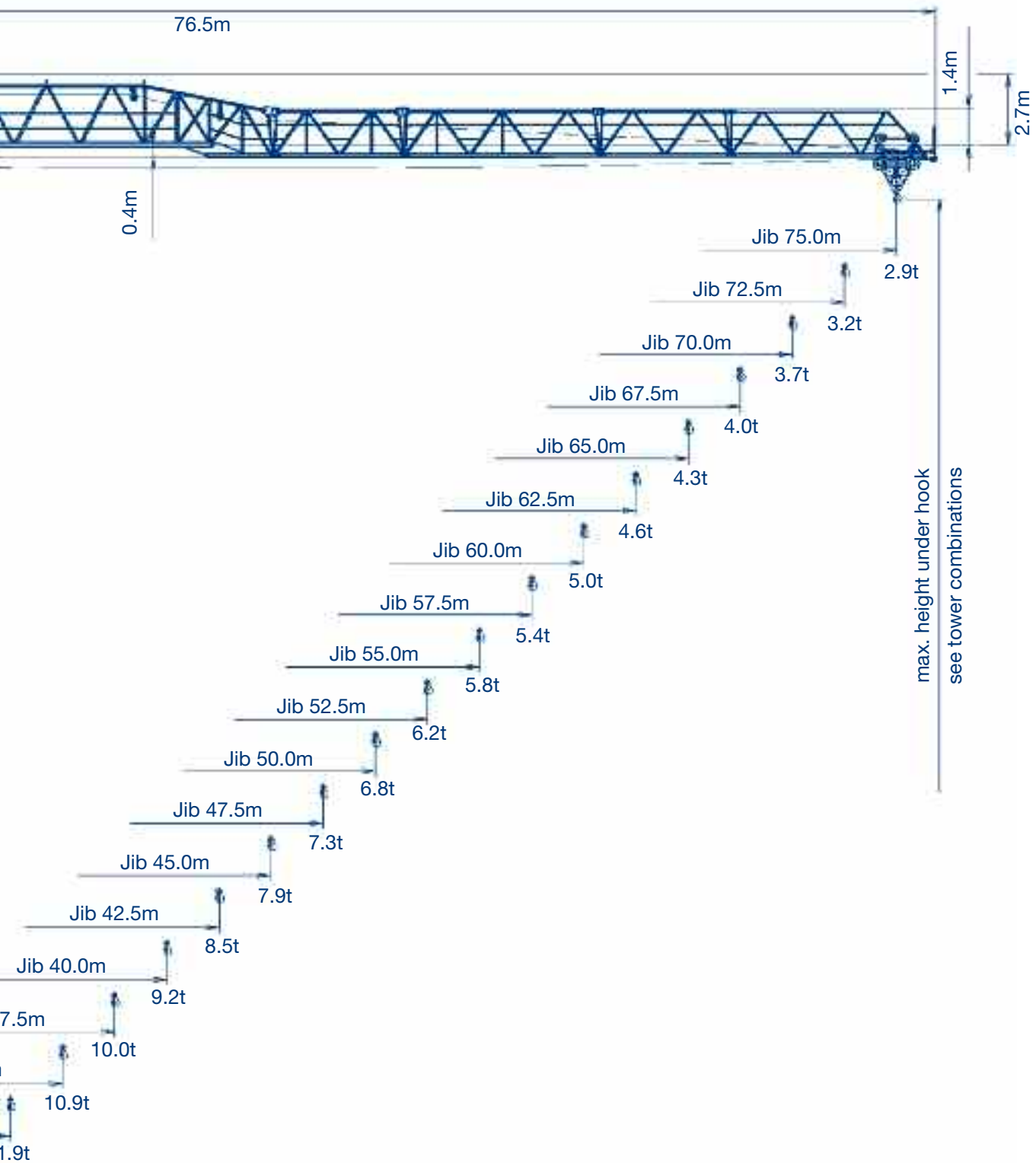
Modular system. **You put it together.**

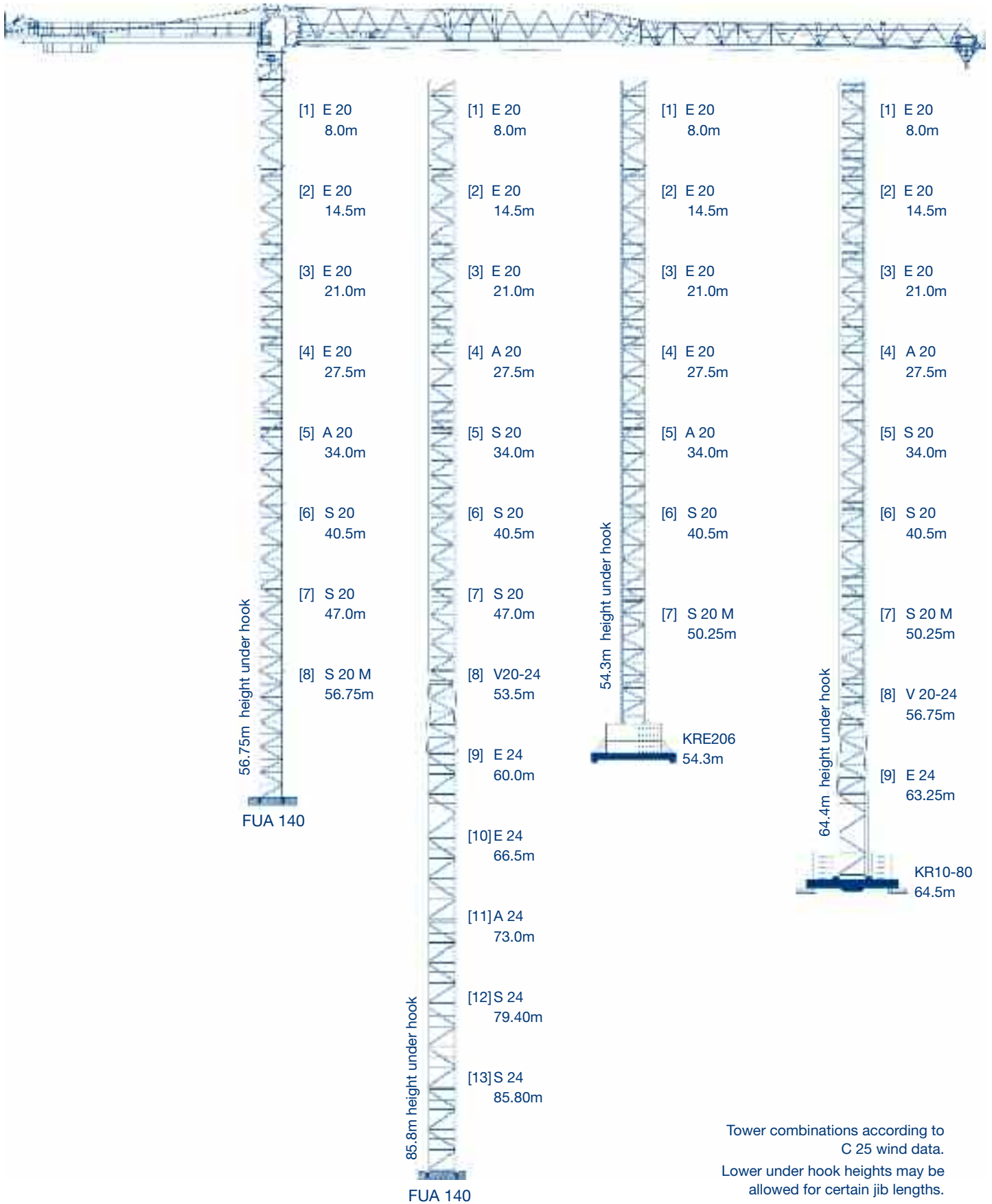
From 25 to 75m - just adapt the length of the jib as required, with eight different jib pieces in two and a half metre lengths. The slewing unit can be assembled on the 2m wide tower elements, which have a standard length of 6.5m and feature external and internal climbing frames. Additional tower elements in intermediate lengths as well as base elements such as foundation anchors, expandable cross frames and assembly optimised cross frame elements - with pressure plates that can be replaced by rail-going undercarriages - are also available for flexible use. And as far as advertising is concerned, the two illuminated display boards can be changed quickly and easily - simply remove the diffusing panel and change the logo.

The real size of the WT 320 *e.tronic* is demonstrated by its maximum freestanding tower height of 85.80m realised with standard tower elements. Higher freestanding under hook heights are possible with special tower elements. Just ask!

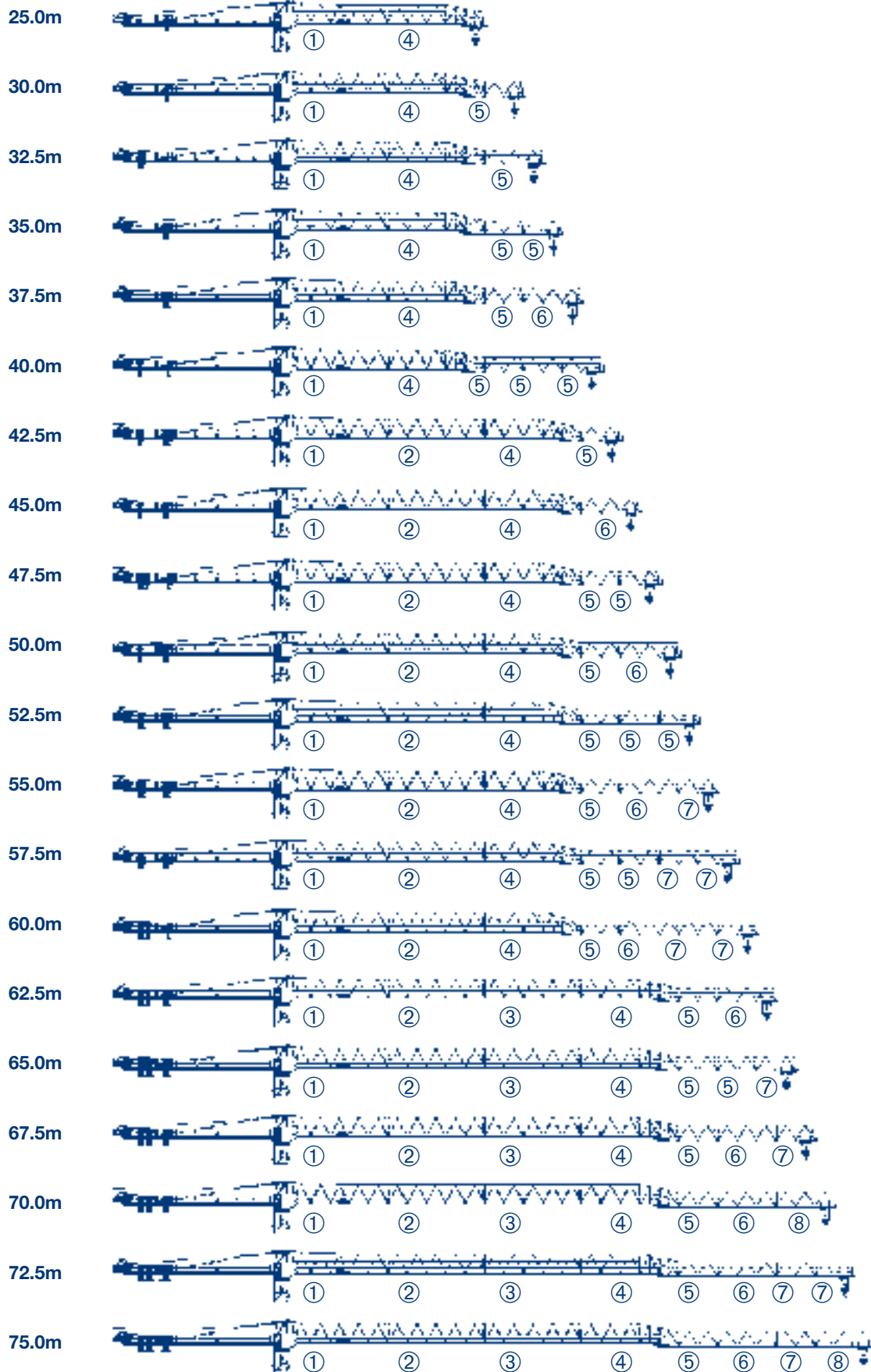
WILBERT Tower Cranes Layout drawing


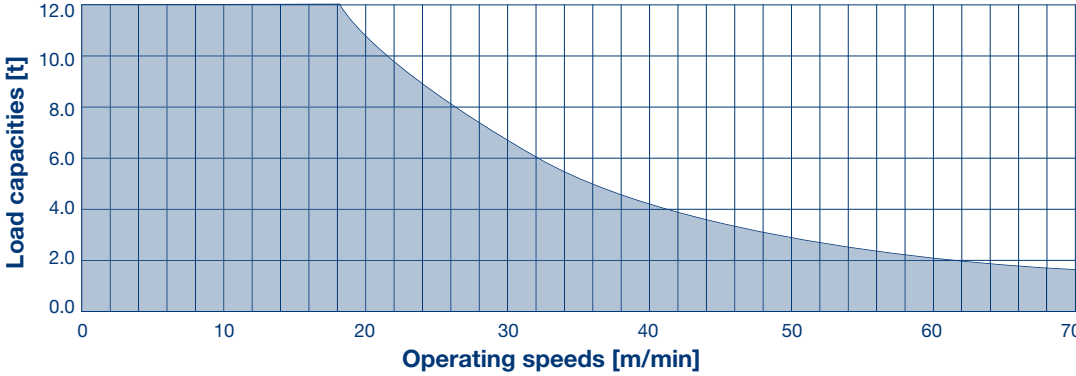

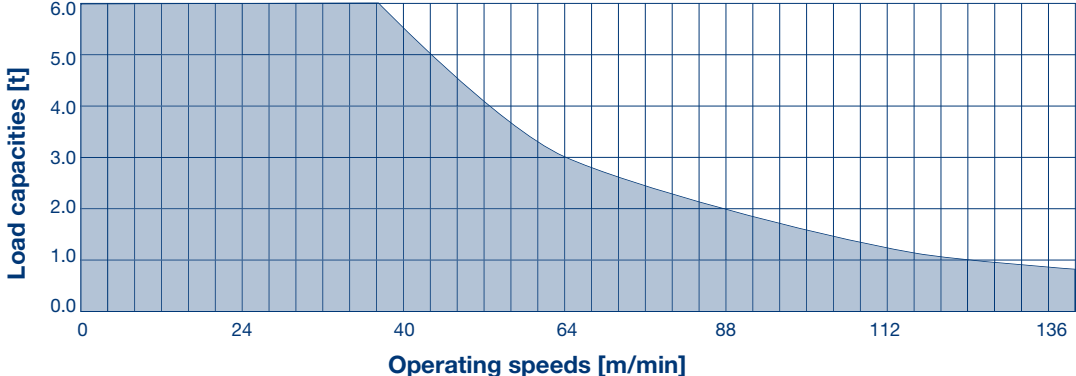

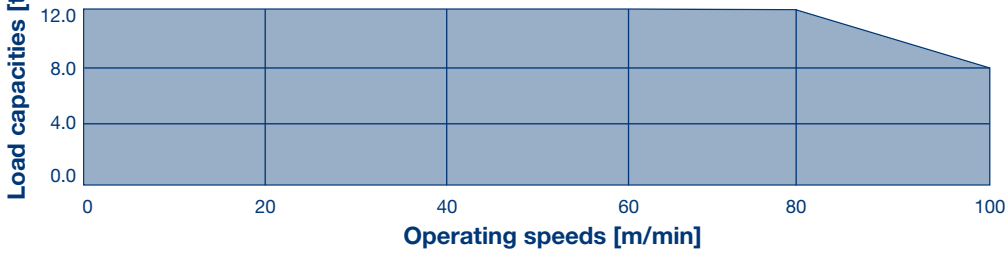








Tower combinations according to C 25 wind data.
Lower under hook heights may be allowed for certain jib lengths.



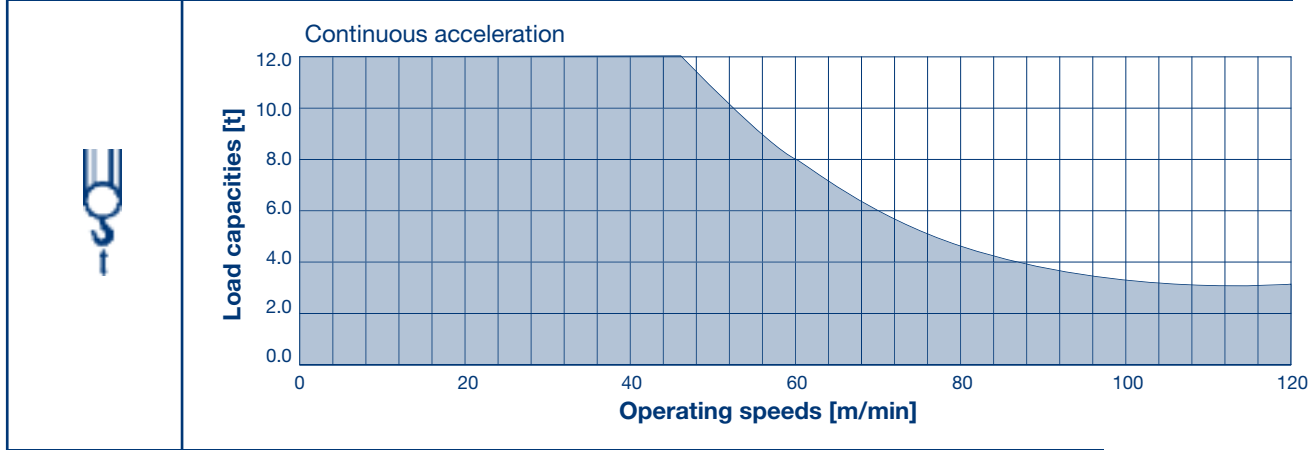
Drive [Typ]	Operating speeds Load capacity	Hook travel max. [m]	Power rating [kW]
HFU 45-40	Hoisting	80 optional: 160	45
	<p>Continuous acceleration</p> 		
	Hoisting	160 optional: 320	
	<p>Continuous acceleration</p>  <p>(referring to the 3rd layer on the hoist rope drum)</p>		
TW	Moving trolley (2 fall)		9.2
	<p>Continuous acceleration</p> 		
DW	Slewing		2 x 7.5
	<p>Continuous acceleration</p>  <p>up to 0.8</p>		

Total connected load

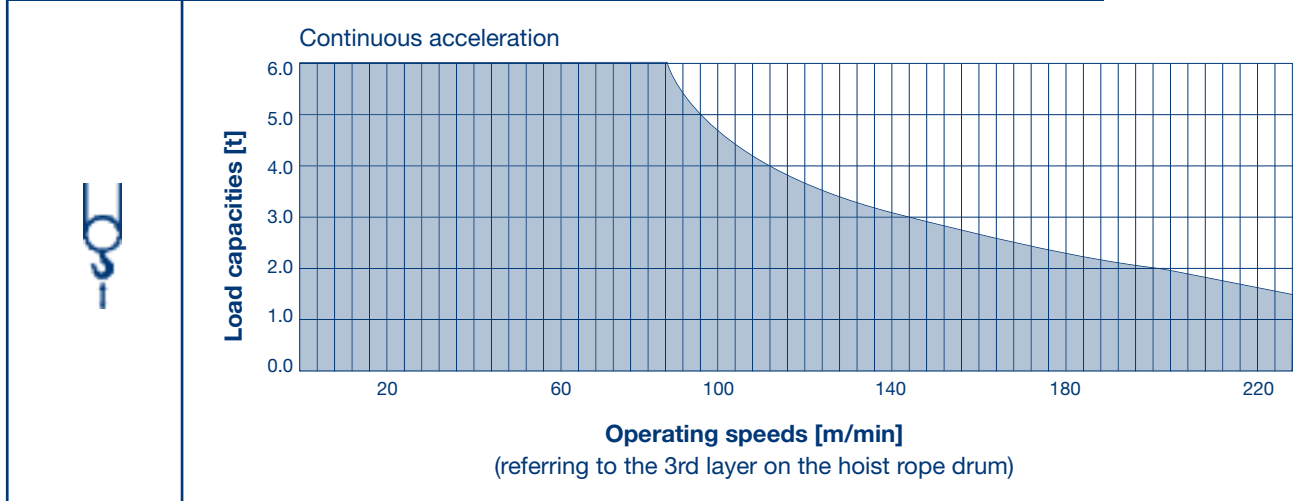
58.0 kVA

Total connected load at utilisation factor 0.8

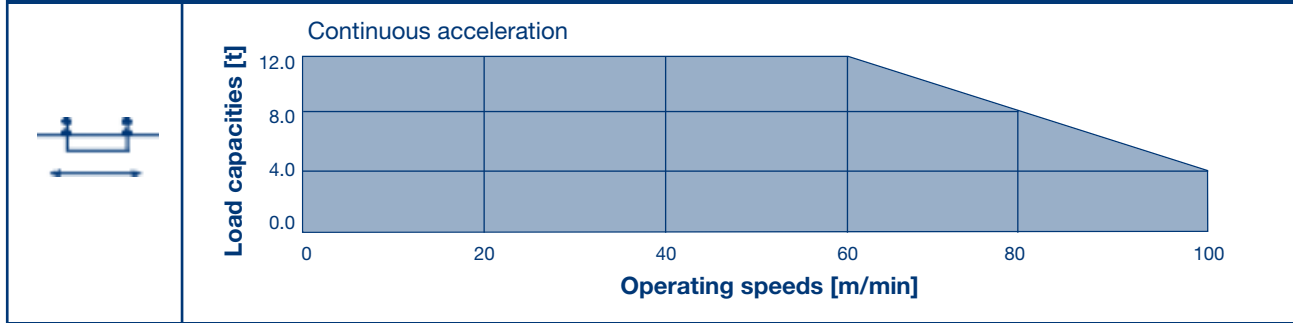
Drive [Typ]	Operating speeds Load capacity	Hook travel max. [m]	Power rating [kW]
HFU 110-30	Hoisting	305	110



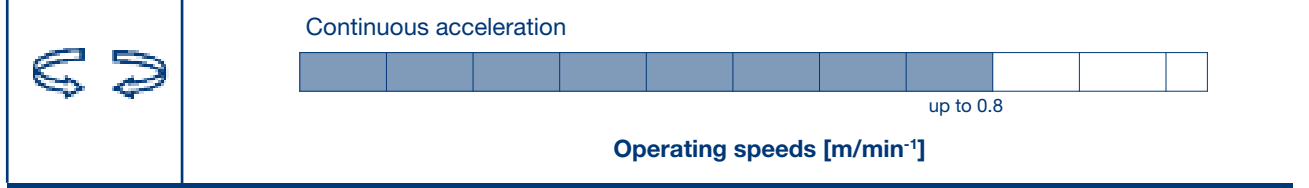
Hoisting	610
-----------------	------------



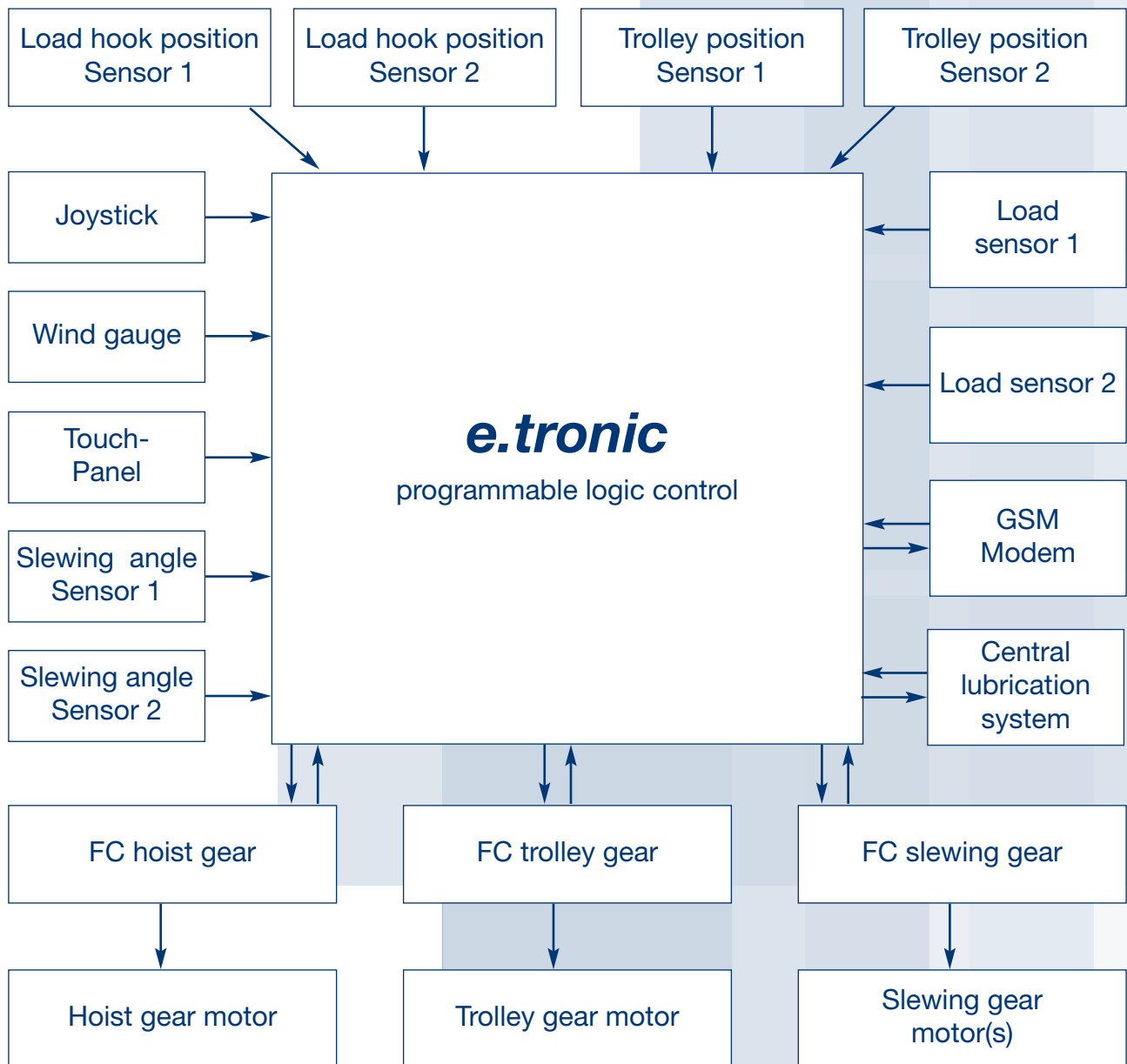
TW	Moving trolley (4 fall)	9.2
-----------	--------------------------------	------------



DW	Slewing	2 x 7.5
-----------	----------------	----------------



Total connected load	118.0 kVA
Total connected load at utilisation factor 0.8	



Pos.	Qty.	Description	Package (not to sale)	Length [m]	Width [m]	Height [m]	Weight [kg]	Volume [m³]
1	1	Tower head section compl. with various stay rods		5.93	2.48	2.40	9,350	35.21
2	1	Cab with cab platform		3.28	1.90	2.45	1,360	15.27
3	1	Counter jib 1		12.19	2.44	1.05	6,700	31.17
4	1	Counter jib 2		6.05	2.44	0.88	6,400	12.98
5a	1	Machine platform HFU 45-40 with hoist rope		2.90	2.49	2.03	3,500	14.65
5b	1	Machine platform HFU 110-40 with hoist rope		2.30	5.40	1.99	7,300	24.67
6	2	Stay rod 1		1.91	0.11	0.29	161	0.06
7	2	Stay rod 2		5.30	0.11	0.29	309	0.17
8	2	Stay rod 3		6.76	0.11	0.29	407	0.22
9	1	Jib section 1 with trolley gear		12.82	1.56	2.58	4,900	51.61
10	0-1 *)	Jib section 2		12.79	1.50	2.54	3,650	48.71
11	0-1 *)	Jib section 3		12.90	1.50	2.50	2,700	48.28
12	1	Jib section 4		12.85	1.50	2.91	2,800	55.98
13	0-3 *)	Jib section 5		5.31	1.11	1.85	800	10.91
14	0-1 *)	Jib section 6		7.78	1.11	1.85	950	15.94
15	0-2 *)	Jib section 7		5.22	1.11	1.84	450	10.67
16	0-1 *)	Jib section 8		7.67	1.11	1.84	550	15.62
17	1	Stay lug		1.34	0.42	0.42	400	0.24
18	1	Rope swivel crossbeam		0.64	1.08	0.43	120	0.29
19	1	Trolley		1.86	1.68	1.37	530	4.27
20	1	Load hook		1.06	0.34	1.78	620	0.65
21	1	Railings (loose parts)		3.30	1.10	1.11	392	4.03
22	1	Concrete counterweight (under machine platform)		1.19	1.96	0.38	2,000	0.88
23	3-11 *)	Concrete counterweight		2.26	1.41	0.36	2,700	1.15

*) Quantity depending on jib length

Transport units

Pos.	Description	Package (not to scale)	Weight [kg]	Volume [m³]
A	Transport unit 1 Counter jib with concrete counterweight 2.0t and machine platform, tower head section, cab with cab platform, trolley, minor items		26,700	103.15
B	Transport unit 2 35m jib (jib 1 with jib 5, jib 2 with jib 7), rope swivel crossbeam		10,320	83.02
C	Transport unit 3 40m jib (jib 3 with jib 6, jib 4 with jib 8), railings		7,400	88.22

WILBERT Turmkrane GmbH

Lohrgraben 2

55444 Waldlaubersheim

Germany

Phone: +49 (0)6707 6668-0

Fax: +49 (0)6707 6668-1490

Web: www.wilbert.de

Email: info@wilbert.de

presented by: