



GROVE[®]
MANLIFT[®]

A GROVE WORLDWIDE COMPANY

AMZ68/ AMZ68XT

Self-Propelled Aerial Work Platforms



Expand your reach with the AMZ68 aerial work platforms from Grove Manlift! With their unique articulating boom and jib design, the AMZ68 and AMZ68XT let you reach up, over and around obstacles for easier set-up and greater productivity.

Both models offer:

- Working height of 68 ft. (20.73 m).
- Horizontal reach of 47 ft. 7 in. (14.5 m).
- Platform capacity of 500 lbs. (227 kg).
- Four-wheel steer for maximum maneuverability.
- Zero tailswing with the riser elevated.

Throughout the working range, the platform remains exceptionally rigid due to the combination of the exclusive Vierendeel embossed trapezoidal boom, and patented center-line boom/riser design.

With the riser fully elevated, the AMZ68 and AMZ68XT give you 19 ft. 8 in. (6.0 m) of vertical clearance. At the same time, the articulating boom extension lets you move the platform through 95° of arc.

This unique 3-dimensional design adds up to an industry leading 1,863 sq. ft. (173 m²) of working range, allowing access to areas previously unreachable.

Standard equipment

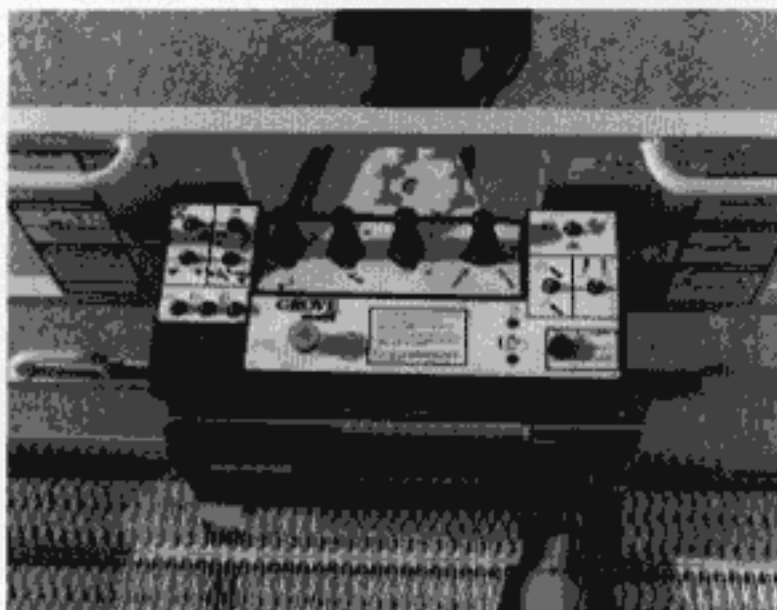
Platform

All-welded 36 x 72 in. (0.91 x 1.83 m) tubular aluminum work platform assembly with inside handrails, sliding bar gate and 180° hydraulic platform rotator. 44 in. (1.12 m) high railings with 6 in. (0.15 m) toeboard.

110-V AC wiring with plug and junction box on turntable and duplex outlet on platform, 15 amp resettable circuit breaker, and ground fault circuit interrupter outlet.

Controls

Upper control panel features proportional controllers with and adjustable "ramp to zero" for drive, lift, telescope and swing. Non-proportional control switches for steering, platform level and rotation. Selection switches for boom/riser/jib lift, high/low engine idle and function speed (low/torque/high). Control enable system* with foot pedal and indicator light. Push buttons for auxiliary power, engine start, choke, emergency stop and horn.



Color coded symbols on the control panels aid in function identification.

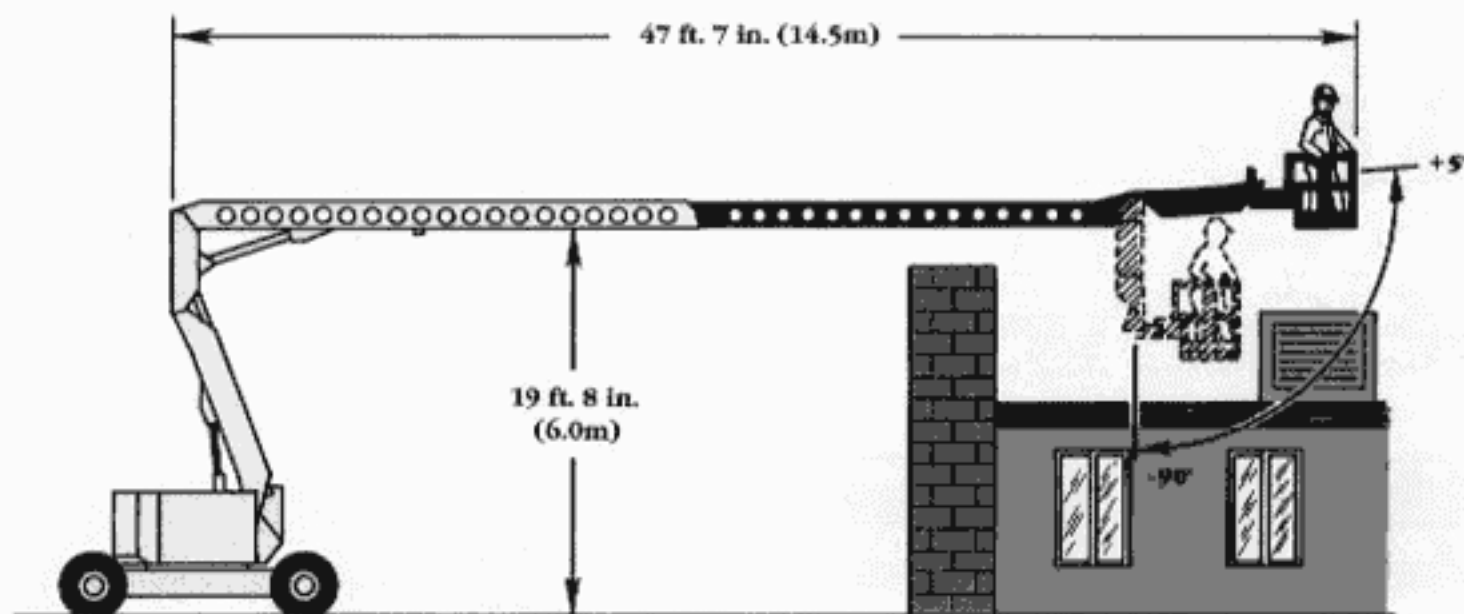
Lower control panel features non-proportional control switches for lift, telescope, swing, platform level and platform rotate. Selection switches for lower/upper controls, boom/riser/jib lift and auxiliary power. Also included are a voltmeter, hourmeter and ignition switch.

Lockable battery disconnect switch.

Boom/Riser

All-steel 2-section Vierendeel-embossed trapezoidal boom with articulating jib attached to fly section. Telescoping boom section supported by adjustable low-friction wear pads.

Internal power guide routes hydraulic and electric lines to the platform.



Three dimensional articulating boom on the AMZ68 and AMZ68XT lets you reach up, over and around obstacles.

Riser is an all steel fabricated mechanical parallelogram with integrally pinned mast.

Double-acting lift cylinder with integral load-holding valve provides boom elevation. Articulating jib with double-acting lift cylinder and integral holding valve.

Ball bearing swing circle with 360° continuous rotation. Planetary double reduction gearbox with hydraulic motor and spring-applied hydraulically released brake. Plunger-type mechanical house lock.

Power Plant

Ford LRG 423 4-cylinder water cooled gasoline engine with 63 hp (47 kw) @ 2,800 rpm.

60 amp alternator.

12-V DC with 700 CCA.

25 gal. (95 L) steel fuel tank with sight gauge.

Hydraulic System

Pressure/flow compensated, variable displacement axial piston hydraulic pump with 43 gpm (163 lpm) capacity. Maximum system operating pressure of 3,750 psi (259 bar).

Electrically activated, consolidated proportional and non-proportional valve bank provides simultaneous functioning of drive, steer, lift, telescope, swing, platform rotate and platform level.

45 gal. (170 lpm) steel hydraulic reservoir with sight gauge.

10 micron hydraulic pressure filter, 10 micron return filter, fill strainer and magnet plug in the reservoir.

Chassis

Two speed drive motors. Front wheel drive on the AMZ68, and four-wheel drive on the AMZ68XT.

Counterbalance valve provides dynamic braking. Automatic spring-applied hydraulically released disc type parking brakes on the drive wheels.

Tilt alarm, all motion alarm.

Options

- Ford LRG 423 4-cylinder water cooled dual fuel engine with 63 hp (47 kw) @ 2,800 rpm.
- Deutz F4L-1011F 4-cylinder air cooled diesel engine with 60 hp (44.7 kw) @ 3,000 rpm.
- 96 in. (2.4 m) aluminum platform.
- Enclosed upper control box cover.
- 2,000 watt self-contained generator.
- 120 psi (8.27 bar) air line to platform.
- Platform worklights.
- Travel lights.
- Amber strobe lights.
- Foam-filled tires.
- Hostile Environment Protection Package.

**Patented Grove feature.*

Specifications

AMZ68/AMZ68XT

Platform

Working Height68 ft. (20.73 m)
 Platform Height.....62 ft. (18.89 m)
 Horizontal Reach
 w/ Riser Elevated.....47 ft. 7 in. (14.5 m)
 Riser Height.....19 ft. 8 in. (6.0 m)
 Platform Capacity500 lbs. (227 kg)

Dimensions

Platform Size
 Standard36 x 72 in. (0.91 x 1.83 m)
 Optional36 x 96 in. (0.91 x 2.44 m)
 Overall Height (stowed)8 ft. 11 in. (2.72 m)
 Overall Length.....30 ft. 7 in. (9.32 m)
 Overall Width8 ft. (2.44 m)
 Track6 ft. 6.5 in. (1.99 m)
 Turning Radius
 (outside)..... 14 ft. 10 in. (4.52 m)
 Tailswing
 Riser Up.....0
 Riser Down5 ft. 1 in. (1.55 m)
 Wheelbase.....9 ft. (2.74 m)
 Ground Clearance.....12 in. (0.30 m)

Performance

Drive/Steer
 AMZ68Front wheel drive, 4 wheel steer
 AMZ68XT4 wheel drive, 4 wheel steer
 Maximum Drive Speed
 AMZ683.0 mph (4.8 km/h)
 AMZ68XT3.0 mph (4.8 km/h)
 Gradeability (Theoretical)
 AMZ6827%
 AMZ68XT40%
 Tire Size15x19.5
 Tire FillPneumatic
 Swing Speed0.5 rpm

Power Source

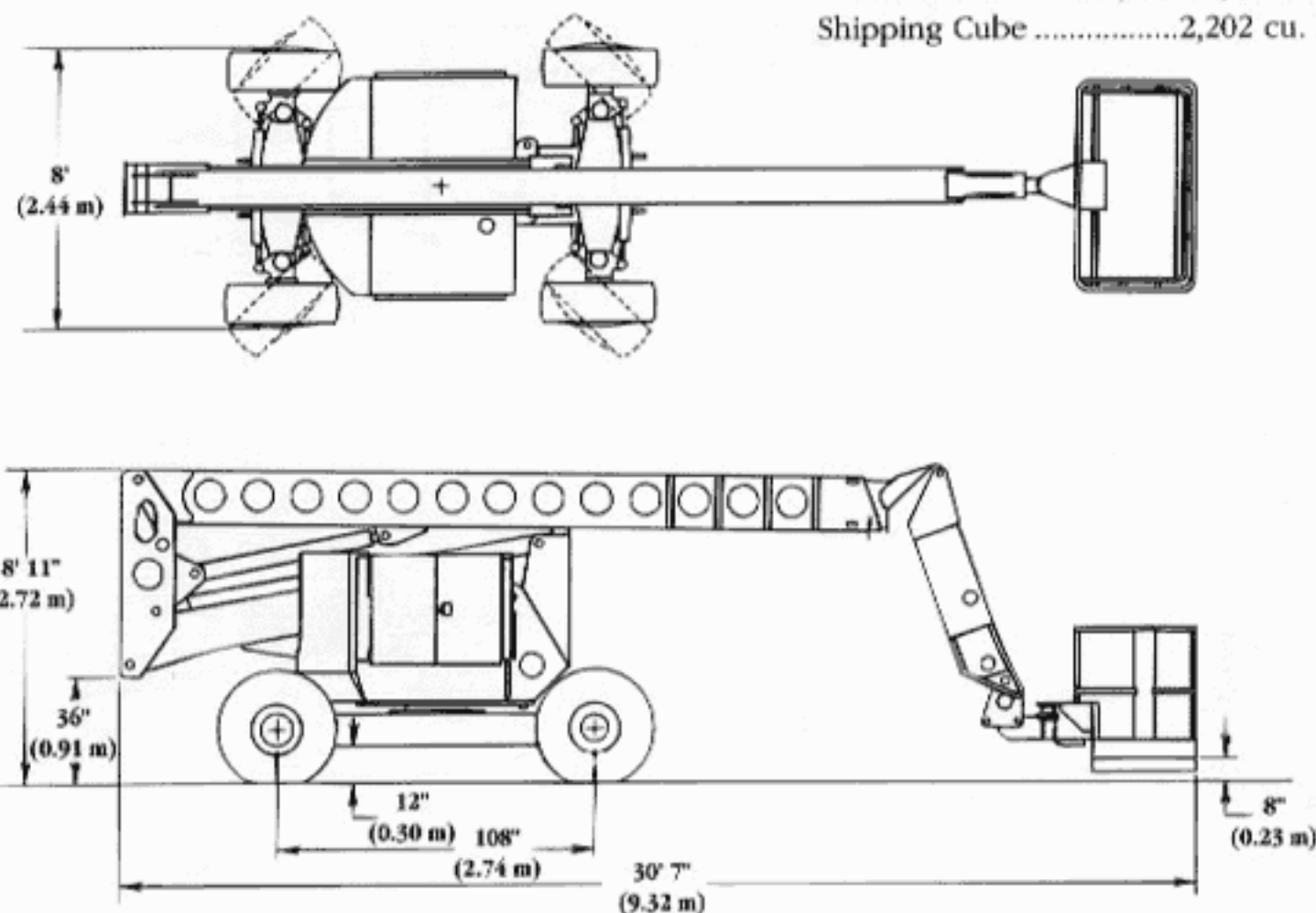
EngineFord LRG 42.3 water cooled
 Engine Horsepower.....63 hp (47 kw)
 Fuel Tank Capacity25 gal. (95 L)

Hydraulics

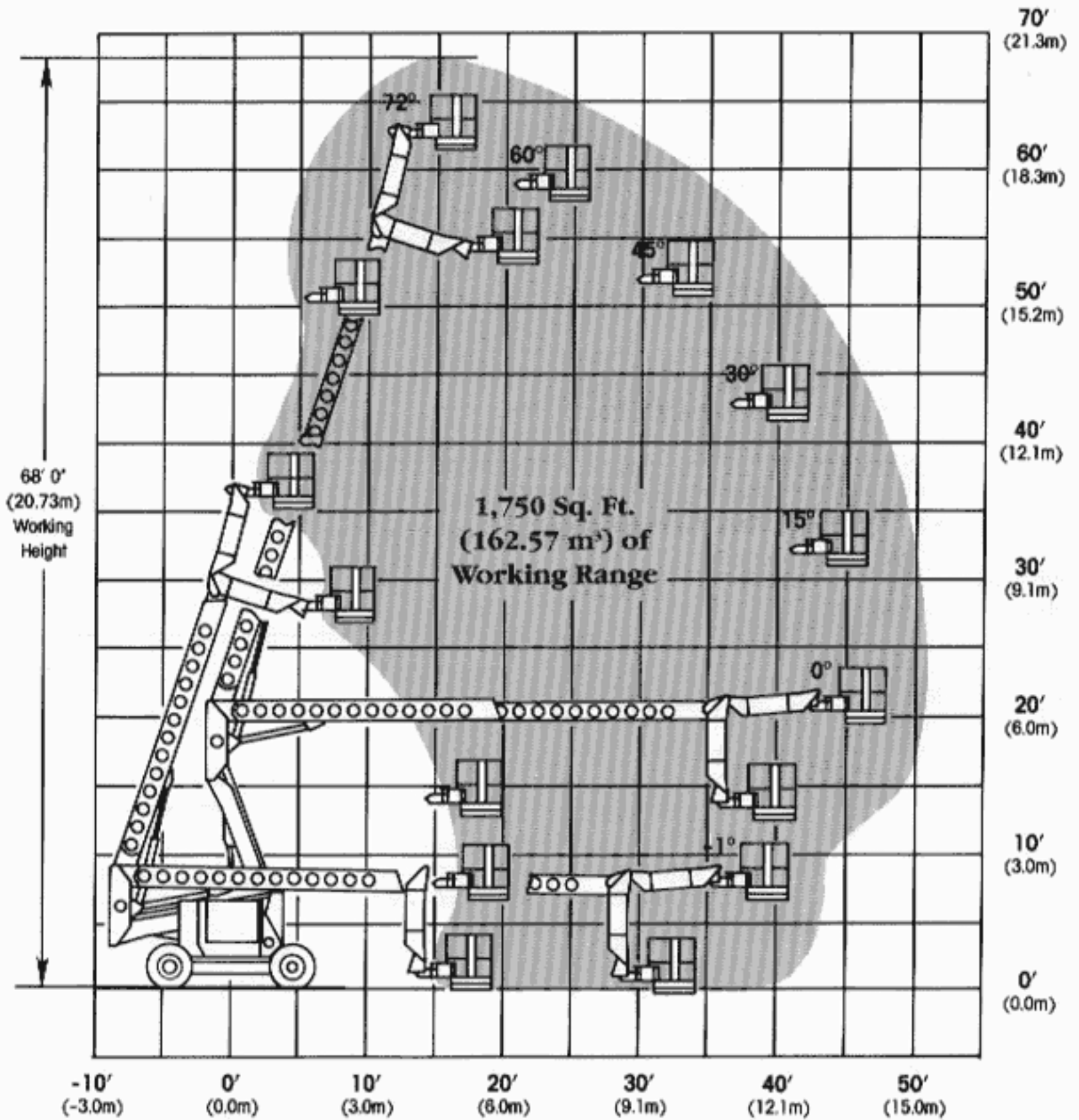
Reservoir Capacity.....24 gal. (91 L)
 Hydraulic Pump Type.....Piston
 Filtration10 micron

Shipping Information

Weight
 AMZ6826,500 lbs. (12020 kg)
 AMZ68XT26,800 lbs. (12157 kg)
 Shipping Cube2,202 cu. ft. (62.35 m³)



AMZ68/AMZ68XT



Easy access to service areas make the AMZ68 and AMZ68XT simple to maintain.



An articulating jib extension provides a third dimension for reaching around obstacles.

7
R
P
E
h
A
ir
B
r
h
re
le

F
e
6
1
2

P
a
C
P

E
a
s
i
t
e
le

4
s
i
1
R
R