

Attachments  
Tyres  
Options



**kramer**ALLRAD



## High Balanced Handling: Flexible Attachment Possibilities.

Committed to provide greater efficiency.

Do you think that a Kramer wheel loader costs money? We say: with its application flexibility and reduced operating costs it is actually a managerial masterpiece.



**WHERE PREVIOUSLY SEVERAL MACHINES WERE USED, NOWADAYS IT'S ALL DONE BY JUST ONE KRAMER ALLRAD UNIT.**

*"Having compatibility with so many different attachments and tools optimizes work processes and provides greater economy. The handy Kramer quick-coupling system also saves time and effort as well. Some of the older attachments can also be easily utilized. This has been our investment in the future."*

**Christoph Braunberger  
Plant Yard Manager**

Kramer offloads an enormous amount of work with a host of attachment possibilities.

**And what have you in mind?**

Their compatibility with countless attachments makes every Kramer model the real all-rounder in the widest range of industrial sectors. Basically how effective any Kramer can be is a matter for its owner. There are plenty of possibilities. You only need to take advantage of them.

In the following pages we are providing some possible solutions for your needs.

**Front-end attachments**

- Standard bucket
- Fork lift attachment
- Light materials handling bucket
- Clamshell bucket
- Side-swivel bucket
- Hi tip bucket
- Material pusher
- Tree removal attachment
- Tree spade
- Branch cutter
- Rotary mower
- Mulcher
- Embankment mower
- Sweeper
- High-pressure spray attachment
- Front-mounted ripper
- Auger
- Trencher
- Asphalt cutter
- Concrete mixer attachment
- Snow blade
- Snow blower
- Work platform
- 3-point adapter and many more





#### **Rear attachments**

- Trailer
  - Overrun braking
  - Compressed air braking
  - Ball-type or jaw-type towbar
  - Tipper
- Salt spreader
  - electric
  - hydraulic



# Construction Industry

## You can carry on building with Kramer.

There's a lot to do when you're building. Just the job for a Kramer loader: it shovels, stacks, grades, dozes, mows and even cleans up again afterwards. With Kramer this flexibility has a name: High Balanced Handling.



2



3



4



5



6



7



1

- 1 Forklift attachment
- 2 4-in-1 bucket
- 3 Rock bucket
- 4 Standard bucket
- 5 Side-swivel bucket
- 6 Forklift attachment
- 7 Sweeper
- 8 Asphalt cutter



8



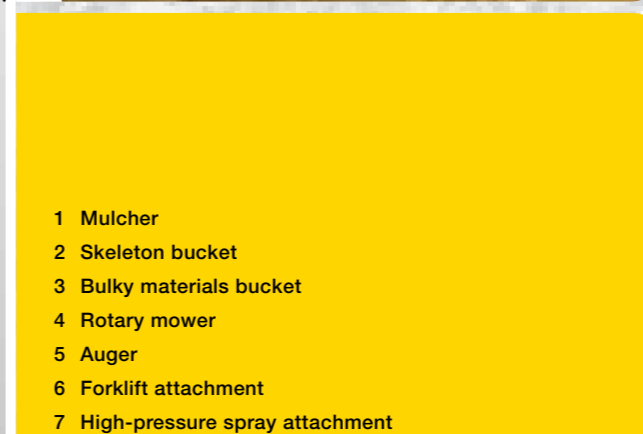
# Landscaping

The yellow unit with green fingers.



*"The power-to-weight ration and the compact dimensions make Kramer loaders indispensable aids for our multiplicity of applications."*

**Franz Muth**  
Garden and Landscaping  
Construction



- 1 Mulcher
- 2 Skeleton bucket
- 3 Bulky materials bucket
- 4 Rotary mower
- 5 Auger
- 6 Forklift attachment
- 7 High-pressure spray attachment



It's so much part of its nature that It's very hard now to imagine that garden and landscaping work could be performed without a Kramer wheel loader. Its compact size and manoeuvrability pay for themselves in each garden. In addition there is a suitable attachment that can be fitted for every requirement. Thanks to High Balanced Handling it constantly retains its stability despite the heaviest loads.



# Recycling

Examples of sustainability.



Ideal for refuse: all-wheel-steer wheel loaders, tele-wheel loaders and telescopic handlers are capable of working in the most confined spaces by having the required manoeuvrability combined with their compact size and low operating costs that are the keys to cost effectiveness.



*"For us the Kramer is the winner when compared to other loaders thanks to its reliability and operational safety."*

**Florian Hinterleitner**  
Recycling Plant

- 1 Bulky materials bucket
- 2 Forklift attachment
- 3 Bulky materials bucket
- 4 Hi-tip bucket
- 5 Bulky materials bucket





## Local Authorities

What the townsfolk say.

The many tasks of a local council mean non-stop work for Kramer loaders. Thanks to Powerflow, trailer hitch, snow blade and fork, the equipment can be effectively used all year round.



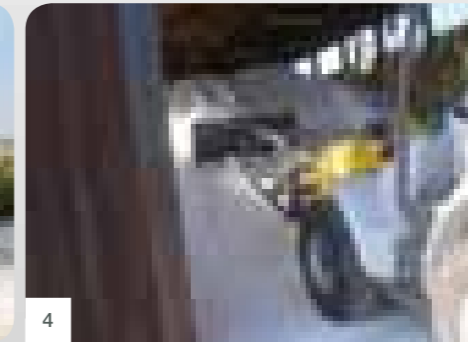
1



2



3



4



5



6



7



8

- 1 Work platform
- 2 Snow blower
- 3 Sweeper
- 4 Material pusher
- 5 Trailer hitch (trailer)
- 6 Hi-tip bucket
- 7 Snow blade and salt spreader
- 8 Branch cutter





# Forestry and timber industry

A Kramer always makes a good impression.



- 1 Flip-over forklift attachment
- 2 Trailer hitch (trailer)
- 3 Path scraper
- 4 Forklift attachment
- 5 Log grapple
- 6 3-point adapter with a cable winch
- 7 Light materials bucket



All Kramer loaders are fashioned from the the same genes: stability on uneven terrain and operational manoeuvrability combined with power, dynamics and versatility are just what a sawmill needs.





## Industry The new "Industrial Revolution".



1

Just as it is everywhere else, in Industry: time is money. The handy quick-coupling system saves both of them. In the end the daily work should not be a balancing act between costs and usage, but should be profitable from every point of view. High Balance Handling ensures this is the case.

*"The Kramer loaders work at the highest efficiency level. Because the engine and hydraulics are perfectly matched to each other and enormous shear and breakout forces are available for use at any time."*

**Karl-Heinz Becker**  
Works Manager

- 1 Industrial bucket
- 2 Light materials bucket
- 3 Bale handler
- 4 Forklift attachment
- 5 Sweeper



2



3



4

5





## Rental fleet

Thanks to flexibility always in use.



1

The features of Kramer loaders are very much sought after. It's no wonder that the machines are always on the move. Everyone benefits from this: your customers and you.



*"Kramer loaders are outstanding due to intuitive operation and high reliability. The flexible application possibilities make them a lucrative investment."*

**Thomas Kröger**  
Branch Manager



3



4



5



2

- 1 4-in-1 bucket
- 2 Easy transport
- 3 Special paint livery
- 4 Forklift attachment
- 5 Sweeper

## Technical specifications.

	MAX. ENGINE POWER	BUCKET CAPACITY	PAYLOAD S = 1.25	NET WEIGHT	TURNING RADIUS (tyres)	MAX. TRAVEL SPEEDS	MAX. LOADOVER HEIGHT
<b>MINI-LOADERS</b>							
<b>350 Canopy</b>	27 kW / 37 PS	0.35–0.55 m <sup>3</sup>	750 kg	1,670 kg	1,950 mm	0–20 km/h	2,680 mm
<b>350 CAB</b>	27 kW / 37 PS	0.35–0.55 m <sup>3</sup>	750 kg	1,720 kg	1,950 mm	0–20 km/h	2,680 mm
<b>280 Canopy</b>	28 kW / 40 PS	0.65–1.1 m <sup>3</sup>	1,600 kg	3,220 kg	2,430 mm	0–20 km/h	2,820 mm
<b>280 CAB</b>	28 kW / 40 PS	0.65–1.1 m <sup>3</sup>	1,600 kg	3,300 kg	2,430 mm	0–20 km/h	2,820 mm
<b>550 Canopy</b>	35 kW / 48 PS	0.55–1.1 m <sup>3</sup>	1,600 kg	3,450 kg	2,700 mm	0–30 km/h	2,890 mm
<b>550 CAB</b>	35 kW / 48 PS	0.55–1.1 m <sup>3</sup>	1,600 kg	3,600 kg	2,700 mm	0–30 km/h	2,890 mm
<b>650</b>	35 kW / 48 PS	0.65–1.1 m <sup>3</sup>	1,750 kg	3,800 kg	2,700 mm	0–30 km/h	2,900 mm
<b>WHEEL LOADERS</b>							
<b>750</b>	45 kW / 61 PS	0.75–1.15 m <sup>3</sup>	1,900 kg	4,200 kg	2,550 mm	0–30 km/h	2,915 mm
<b>850</b>	45 kW / 61 PS	0.85–1.3 m <sup>3</sup>	2,000 kg	4,500 kg	2,550 mm	0–30 km/h	3,100 mm
<b>950</b>	55 kW / 75 PS	0.95–1.6 m <sup>3</sup>	2,100 kg	4,700 kg	2,780 mm	0–30 km/h	3,120 mm
<b>1150</b>	55 kW / 75 PS	1.15–1.8 m <sup>3</sup>	2,900 kg	5,900 kg	2,850 mm	0–30 km/h	3,235 mm
<b>380</b>	45 kW / 61 PS	0.75–1.15 m <sup>3</sup>	2,000 kg	4,300 kg	2,900 mm	0–35 km/h	2,915 mm
<b>480</b>	55 kW / 75 PS	0.85–1.3 m <sup>3</sup>	2,150 kg	4,900 kg	2,900 mm	0–40 km/h	3,100 mm
<b>580</b>	55 kW / 75 PS	0.95–1.5 m <sup>3</sup>	2,300 kg	4,920 kg	2,900 mm	0–40 km/h	3,050 mm
<b>680</b>	55 kW / 75 PS	1.05–1.6 m <sup>3</sup>	2,500 kg	5,650 kg	2,950 mm	0–40 km/h	3,050 mm
<b>780</b>	55 kW / 75 PS	1.15–1.8 m <sup>3</sup>	2,900 kg	6,100 kg	2,950 mm	0–35 km/h	3,200 mm
<b>880</b>	88 kW / 120 PS	1.5–2.5 m <sup>3</sup>	3,500 kg	8,400 kg	3,450 mm	0–35 km/h	3,530 mm
<b>TELE WHEEL LOADERS</b>							
<b>750T</b>	45 kW / 61 PS	0.75–1.5 m <sup>3</sup>	1,730 kg	5,100 kg	2,550 mm	0–30 km/h	4,510 mm
<b>680T</b>	55 kW / 75 PS	0.95–1.5 m <sup>3</sup>	2,300 kg	5,950 kg	3,110 mm	0–35 km/h	4,450 mm
<b>COMPACT TELEHANDLERS</b>							
<b>1245</b>	23 kW / 31 PS	0.4–1.03 m <sup>3</sup>	1,200 kg	2,530 kg	2,607 mm	0–20 km/h	4,130 mm
<b>2506</b>	50 kW / 68 PS	0.85–1.8 m <sup>3</sup>	2,500 kg	4,730 kg	3,670 mm	0–30 km/h	5,600 mm
<b>TELEHANDLERS</b>							
<b>3307</b>	88 kW / 120 PS	1.2–2.5 m <sup>3</sup>	3,300 kg	7,200 kg	3,600 mm	0–40 km/h	7,050 mm
<b>4507</b>	88 kW / 120 PS	1.2–3.0 m <sup>3</sup>	4,400 kg	8,100 kg	3,600 mm	0–40 km/h	7,050 mm
<b>4009</b>	88 kW / 120 PS	1.2–3.0 m <sup>3</sup>	4,000 kg	8,600 kg	3,650 mm	0–40 km/h	8,825 mm

## Options.

### CAB

Rotating beacon (yellow)  
Working lights rear  
Working lights front  
Heated seat  
"Comfort" operator's seat  
Orthopaedic seat  
Supplementary heating  
Heated rear-view mirror  
Air-conditioning  
Radio

### TRAVEL DRIVE / STEERING

Load stabilizer  
Crab steering  
Ecospeed high-speed gearbox  
Trailer drawbar  
Manual throttle  
Creep speed device  
Compressed air braking

### ENGINE

Larger capacity industrial cooler  
Reversible fan motor  
Pre-separator for dusty applications  
Fuel preheating

### HYDRAULICS

Float position  
4. Control circuit for front-end attachments  
Supplementary control circuit for tippers  
Supplementary control circuit-rear  
Power hydraulics Powerflow  
Bucket automatic return-to-dig  
Work platform attachment parts  
Hydraulic oil preheating

### ELECTRICS

Plug-socket for front-end attachments  
Battery disconnection switch  
Plug-socket for rear attachments

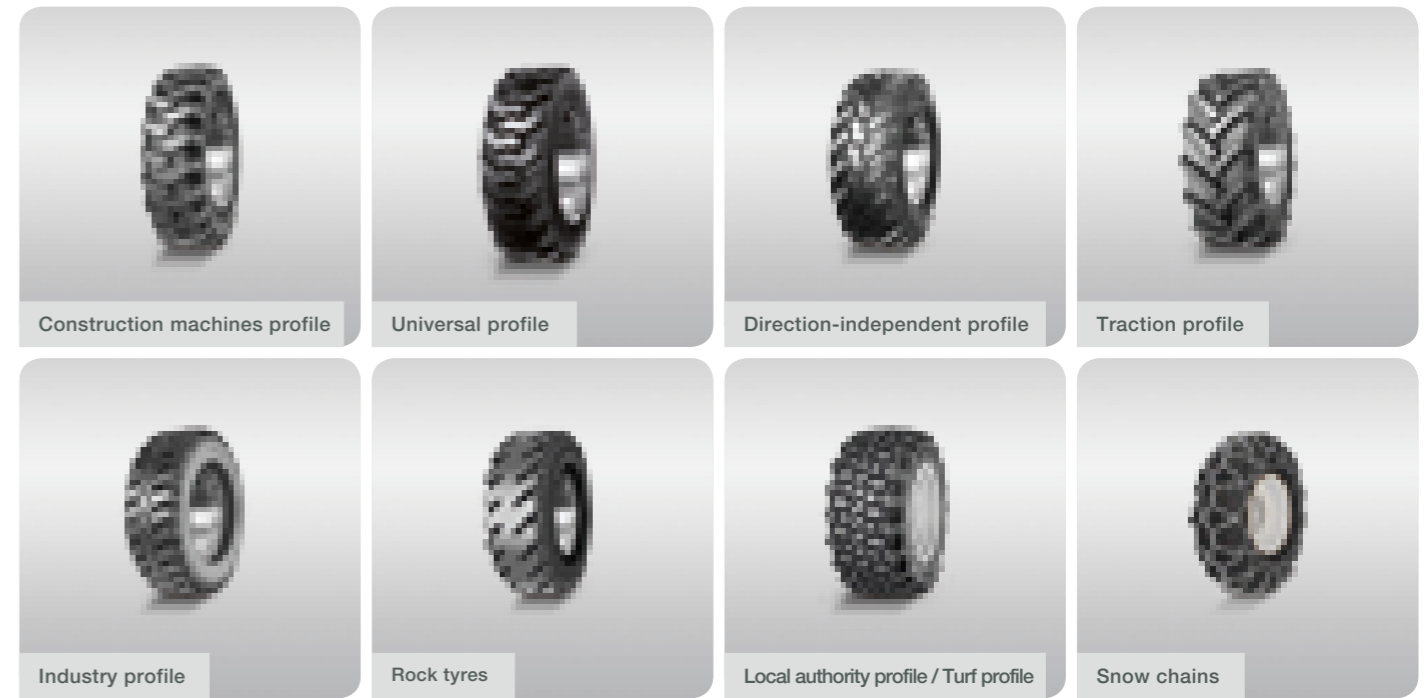
### SAFETY OPTIONS

Pipe-fracturing safety system for lift and tilt cylinders  
Reversing warning device (acoustic)  
Warning strips red / white (as per DIN 30710)  
FOPS II protective grill  
Engine immobilizer  
Fire extinguisher  
"Protective measures for operation in aggressive media (salt and fertilizer applications)"

### MISCELLANEOUS

Special paintwork  
Craning hook  
Central lubrication system

# Tyres.



	MINI-LOADERS				WHEEL LOADERS								TELE WHEEL LOADERS		COMPACT-TELEHANDLERS		TELEHANDLERS				
	350	280	550	650	750	850	950	1150	380	480	580	680	780	880	750T	680T	1245	2506	3307	4507	4009
Foam-filled tyres	-	-	-	-	○	○	○	○	○	○	○	○	○	○	○	○	-	○	○	○	○
Construction machines profile	○	○	●	●	●	●	●	○	●	●	●	●	●	○	●	●	-	●	○	○	○
Universal profile	●	○	○	○	-	-	-	-	-	-	-	-	-	●	-	-	○	○	-	-	-
Direction-independent profile	-	-	○	○	○	○	○	○	○	○	○	○	○	○	○	○	-	-	○	○	○
Traction profile	○	●	○	○	○	○	○	●	○	○	○	○	○	○	○	○	●	○	●	●	●
Industry profile	○	-	○	○	○	○	○	●	○	○	○	○	○	○	○	○	-	○	○	○	○
Rock tyres	-	-	-	-	-	-	-	-	-	-	-	-	-	○	-	-	-	-	○	○	○
Local authority profile / Turf profile	○	-	○	○	-	○	○	-	-	○	○	○	-	-	○	○	-	-	-	-	-
Tyre puncture protection	○	○	○	○	○	○	○	○	○	○	○	○	○	○	○	○	○	○	○	○	○
Snow chains	○	○	○	○	○	○	○	○	○	○	○	○	○	○	○	○	○	○	○	○	○

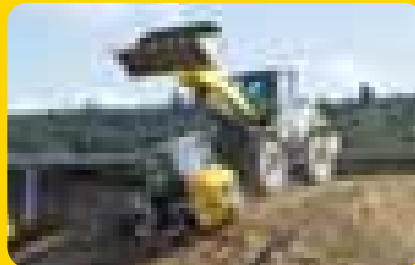
● Standard equipment  
○ Option

Whatever the application:  
With Kramer's features you  
are always one step ahead.



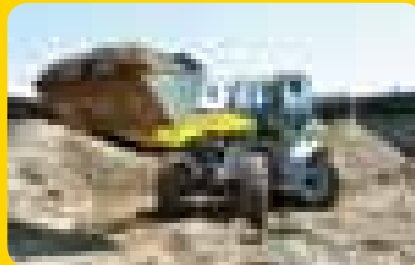
**Non-articulated chassis: stability in every situation.**

A non-articulated frame for all wheel loaders and telehandlers is Kramer's speciality. This gives the highest stability particularly with high payloads and on difficult terrain.



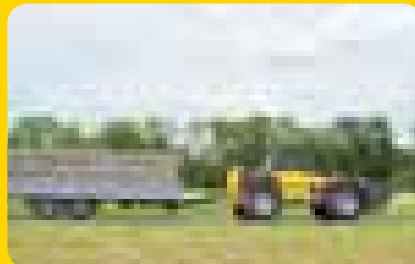
**Steering Manoeuvrability thanks to all-wheel steering.**

The high angle of lock of 2 x 40° and a smaller turning radius ensure that it never becomes too narrow for an all-wheel steer Kramer loader. Neither in terms of space nor of time.



**Power application Speed and thrust alternate with each other.**

Speed and thrust alternate perfectly with each other. As soon as the loader drives into the pile that is to be loaded, the speed is reduced and switches over to thrust. When it reverses out, the process switches-over once again. Fully automatically.



**Ecospeed: economy with full power**

To-date unique in the construction machinery sector: the infinitely variable Ecospeed overdrive. This travel drive not only significantly reduces fuel consumption and noise-emission, but also retains constant full traction at all speeds up to 40 km/h.



**Smart handling: efficiency comes as standard.**

The innovative overload system is standard for all Kramer telehandlers – unlike other comparable systems, and has no adverse effects on productivity. For efficiency that never stops.



Our history:  
innovation from tradition.



- **2011** The innovative "smart handling" operator assistance system for increased operator safety of telehandlers and greater efficiency in working applications.
- **2010** The first range of wheel loaders with three types of steering: front wheel steering, all-wheel steering and crab steering.
- **2010** The first compact telehandler for the construction and agricultural sectors: powerful mobility.
- **2008** Based upon growing demands and expansion of the product range Kramer sets up a completely new factory in Pfullendorf. This is amongst the most modern manufacturing plants in Europe.
- **2007** A new company is formed: Neuson Kramer Baumaschinen AG and Wacker Construction Equipment AG merge. The new company Wacker Neuson SE offers a full range of light and compact equipment.
- **2005** A new range of telehandlers was developed and launched. Thanks to a collaboration with the agricultural machinery manufacturers Claas, the telehandlers are now being successfully marketed in the agricultural sector.
- **2003** Kramer introduces the first wheel loader range with an infinitely variable overdrive gearbox and highway-use-licensed trailer hitch.
- **2000** The companies Neuson und Kramer merge. With Neuson Kramer Baumaschinen AG a company is created, which concentrates on the development and manufacture of compact construction machines.
- **1992** To meet customer requirements, Kramer develops a wheel loader with telescopic swing-arm. The plus benefits of stacking height and reach catch on.
- **1987** The first all-wheel-steer wheel loader was introduced to the market. This steering system is still used today on all Kramer vehicles.
- **1965** The innovative load stabilization system for the loader installation is developed by Kramer engineers.
- **1963** Kramer is the first manufacturer to introduce a hydraulic quick-coupling device.
- **1925** Company is established as a manufacturer of motor mowers.

Main factory.

Pfullendorf, Germany

All Kramer loaders are produced by a market-leading construction machinery company located in the heart of Europe. With quality, stability and a continuity that can be relied on: typical of what "Made in Germany" stands for. Every model is built prepared for the future and is part of a comprehensive system.

Everything matches up. And everything matches the future: with sustainable cost-effectiveness.



**IN DEMAND WORLDWIDE - PRODUCED IN PFULLENDORF.**

The Kramer factories with their headquarters in Pfullendorf are a worldwide leading manufacturer of compact construction machinery and part of the Wacker Neuson Group.







**kramer**ALLRAD



**Kramer-Werke GmbH**  
Wacker Neuson Straße 1  
88630 Pfullendorf  
Germany  
Tel. 00 800 90 20 90 20  
Fax +49(0)7552 92 88-234  
info@kramer.de  
www.kramer.de