

Engine Weichai WD10G178E25
Gross Power 128 kW (174 hp) @ 1,850 rpm
Net Power 120 kW (163 hp) @ 1,850 rpm
Maximum Torque 830 N · m
Blade Capacity 4.5 m³
Operating Weight 17,000 kg

B160 BULLDOZER

 **LIUGONG**



TOUGH WORLD. TOUGH EQUIPMENT.

B160 SPECIFICATIONS >>>

ENGINE

Emission Regulation	Tier 2 / Stage II
Make	Weichai
Model	WD10G178E25
Gross Power	128 kW (174 hp) @ 1,850 rpm
Net Power	120 kW (163 hp) @ 1,850 rpm
Peak Torque	830 N·m @ 1,000-1,200 rpm
Number of Cylinders	6
Aspiration	Turbocharged
Displacement	9.726 L

TRANSMISSION

Transmission Type	Power shift
Maximum Travel Speed, fwd	10.6 km/h
Maximum Travel Speed, rev	13.6 km/h
Number of Speeds, fwd	3
Number of Speeds, rev	3

ELECTRICAL SYSTEM

System Voltage	24 V
----------------	------

UNDERCARRIAGE

Shoe Width	510 mm
Number of Shoes per Side	37
Number of Upper Rollers per Side	2
Number of Bottom Rollers per Side	6
Shoe Ground Pressure	67 kPa
Track on Ground	2,430 mm

DIMENSIONS

Overall Length	6,510 mm
Height to Top of Cab	3,200 mm
Ground Clearance	400 mm

OPERATING WEIGHTS

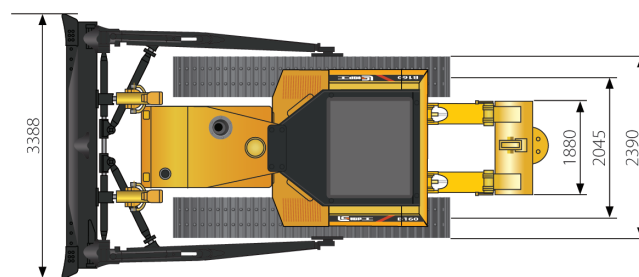
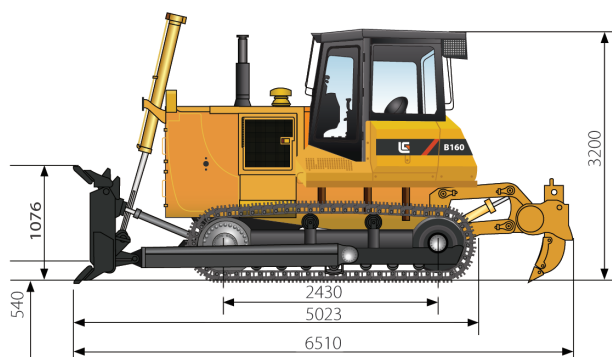
Operating Weight	17,000 kg
------------------	-----------

BLADE PERFORMANCE

Blade Type (referenced)	straight
Blade Capacity (referenced)	4.5 m ³
Blade Width	3,388 mm
Blade Height	1,149 mm
Blade Depth below Ground	540 mm
Blade Lift above Ground	1,076 mm
Blade Tilt (left)	445 mm
Blade Tilt (right)	470 mm

SERVICE CAPACITIES

Fuel Tank	350 L
Engine Oil	24 L
Cooling System	40.5 L
Hydraulic System Total	108 L
Transmission and Torque Converter	122 L
Final Drives, each	66 L



Unit: mm

Guangxi Liugong Machinery Co., Ltd.

No. 1 Liutai Road, Liuzhou, Guangxi 545007, PR China
 T: +86 772 3886124 E: overseas@liugong.com
 www.liugong.com

05/2014 Designed by LiuGong

Specifications and designs are subject to change without notice. Machines shown may include optional equipment.