

DRUM CUTTERS

• 9 models for excavators with operating weight from 2 to 60 ton.

DX SERIES

HIGH PROFITABILITY

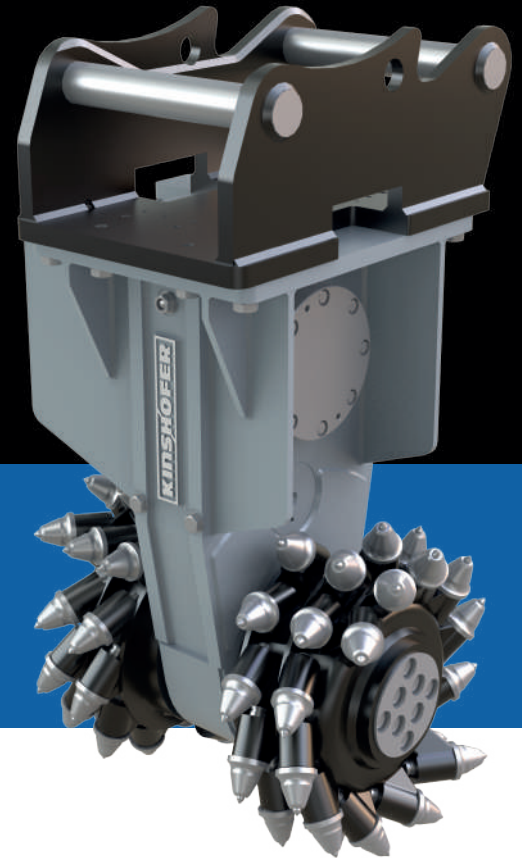
Robust and low maintenance, precise and profile-true cutting in hard soil and rock, easy reutilization of cut material.

GREATER EFFICIENCY

High pick force, extremely high cutting head torque and maximum cutting force due to reduction gear unit.


MAXIMUM FLEXIBILITY

Modular construction, large product range of drums and picks, fast and easy replacing of wear parts.



THE BEST SUITED COMPONENTS FOR YOUR PURPOSE

MODELS

		DX04	DX06	DX08	DX15
 CARRIER WEIGHT	t	2-4	4-6	6-8	8-15
WEIGHT	kg	250	250	250	420
NOMINAL POWER MAX.	kw	18-22	18-22	18-22	30
FLOW (MIN/MAX)	l/min	30-65	30-65	30-65	70-120

*All illustrations and numerical data in this catalog are purely indicative and subject to change at our discretion and without notice. We therefore reserve the right to modify them with a view to improving and continuously developing our product.



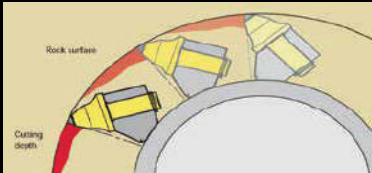
WWW.HAMMEREUROPE.COM



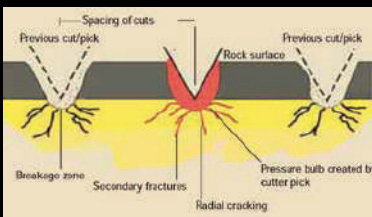
**FIND OUT
MORE**

The cutters with robust spur gearing are driven by high torque motors. In addition, they are equipped with a gear reduction to increase the cutting force. The optimal selection of drum and pick guarantees high performance for loosening of material and reduces wear. The best suited components for your task will provide optimum penetration into the rock at low vibration and noise levels.

Underwater operation in up to 25m water depth is no problem thanks to the heavy duty sealing system.



It is not the performance of the cutter (kW) which is decisive for the cutting operation, but the pick force due to the cutting head torque.



The optimum arrangement of the pick guarantees a high loosening performance and low wear. Thus a smooth cutting reduces vibration on the excavator.



MINING & QUARRYING



DEMOLITION & RENOVATION



CONSTRUCTION



METALLURGICAL INDUSTRY

MODELS

		DX20	DX30	DX35	DX45	DX60
CARRIER WEIGHT	t	15-20	20-30	30-35	35-45	45-60
WEIGHT	kg	850	1400	1460	2550	2800
NOMINAL POWER MAX.	kw	45	60	90	120	140
FLOW (MIN/MAX)	l/min	100-190	120-210	240-340	250-500	360-550

*All illustrations and numerical data in this catalog are purely indicative and subject to change at our discretion and without notice. We therefore reserve the right to modify them with a view to improving and continuously developing our product.



DRUM CUTTERS

• 9 models for excavators with operating weight from 2 to 60 ton.

STANDARD DRUM VERSIONS:

Benefit from the variety of drums available in different strengths for all kinds of operations. Special drum versions are available on request.



Excavating Drum

For cutting soft to medium-hard rock. With select pick for maximum productivity and loosening performance.



Profiling Drum

For shaping and leveling soft to medium-hard rocks. Higher density of pick for clean surfaces at reduced vibration.



Demolition Drum

For cutting medium-hard to hard rock and concrete. High running smoothness and reduced vibration due to wear-protected spiral sheet.

PICK VERSIONS:

The specific selection of the pick for the required operation guarantees an optimum loosening performance and low wear.



Standard Pick

For soft to medium-hard rocks. (Asphalt, argillite)



Heavy Duty Pick

For medium-hard to very hard rocks. (Limestone, concrete)



Wear-Protected Pick

For very abrasive rocks. (Sandstone, furnace gravel)



Wood Pick

For wood applications. (Tree stumps)



DX SERIES

MODELS

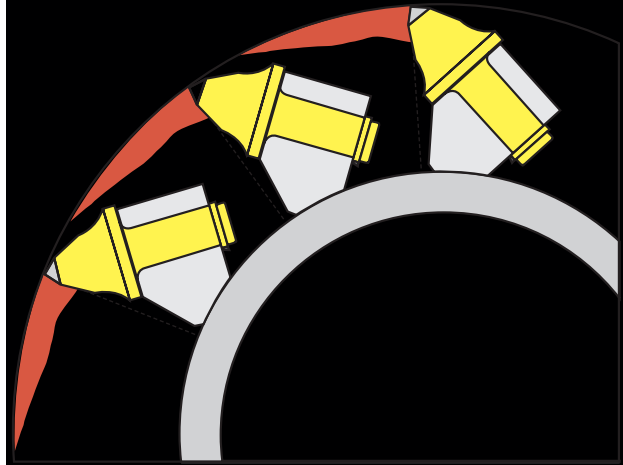
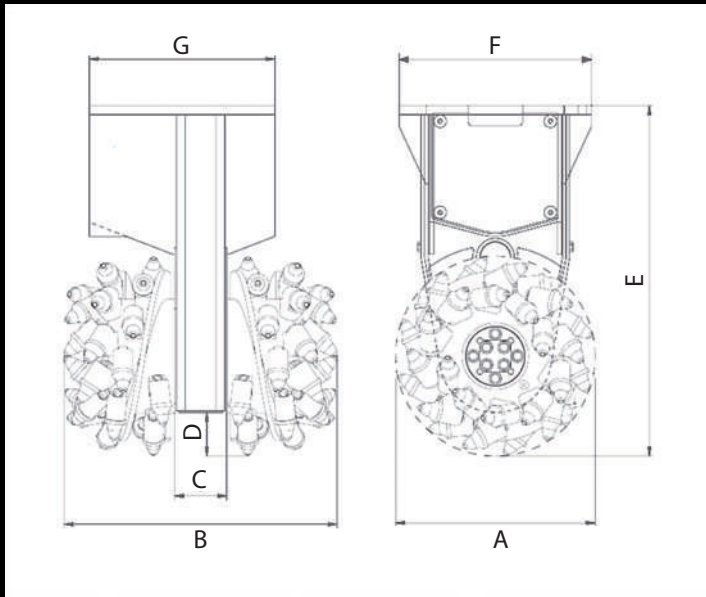
MODELS	Weight (ca. kg/lbs)	Torque* (Nm/ft.lbs.)	Cutting force (N/lbf)	Nominal power (kW / J/s)	Flow min. - max. (l/min / GPM)	Rotations per minute (@ l/min)	Operating weight (t/lbs)
DX04-Excavating	250 / 550	2330 / 1718	13320 / 2930	18 / 18000	30 - 65 / 7.9 - 17.2	71 @ 30 / 150 @ 65	2 - 4 / 4400 - 8800
DX04-Demolition	250 / 550	2330 / 1718	13320 / 2930	18 / 18000	30 - 65 / 7.9 - 17.2	71 @ 30 / 150 @ 65	2 - 4 / 4400 - 8800
DX04-Profiling	250 / 550	2330 / 1718	20260 / 4457	18 / 18000	30 - 65 / 7.9 - 17.2	71 @ 30 / 150 @ 65	2 - 4 / 4400 - 8800
DX06-Excavating	250 / 550	2800 / 2065	16000 / 3520	18 / 18000	40 - 65 / 10.6 - 17.2	77 @ 40 / 130 @ 65	4 - 6 / 8800 - 13200
DX06-Demolition	250 / 550	2800 / 2065	16000 / 3520	18 / 18000	40 - 65 / 10.6 - 17.2	77 @ 40 / 130 @ 65	4 - 6 / 8800 - 13200
DX06-Profiling	250 / 550	2800 / 2065	24350 / 5357	18 / 18000	40 - 65 / 10.6 - 17.2	77 @ 40 / 130 @ 65	4 - 6 / 8800 - 13200
DX08-Excavating	250 / 550	3900 / 2876	22290 / 4904	22 / 22000	50 - 65 / 13.2 - 17.2	63 @ 50 / 82 @ 65	5 - 8 / 11000 - 17600
DX08-Demolition	250 / 550	3900 / 2876	22290 / 4904	22 / 22000	50 - 65 / 13.2 - 17.2	63 @ 50 / 82 @ 65	5 - 8 / 11000 - 17600
DX08-Profiling	250 / 550	3900 / 2876	33920 / 7462	22 / 22000	50 - 65 / 13.2 - 17.2	63 @ 50 / 82 @ 65	5 - 8 / 11000 - 17600
DX15-Excavating	420 / 924	5500 / 4056	27160 / 5975	30 / 30000	80 - 120 / 21.1 - 31.7	81 @ 80 / 122 @ 120	9 - 14 / 19800 - 30800
DX15-Demolition	420 / 924	5500 / 4056	27160 / 5975	30 / 30000	80 - 120 / 21.1 - 31.7	81 @ 80 / 122 @ 120	9 - 14 / 19800 - 30800
DX15-Profiling	420 / 924	5500 / 4056	27160 / 5975	30 / 30000	80 - 120 / 21.1 - 31.7	81 @ 80 / 122 @ 120	9 - 14 / 19800 - 30800
DX20-Excavating	850 / 1870	9900 / 7300	36000 / 7920	45 / 45000	120 - 190 / 31.7 - 50.2	67 @ 120 / 106 @ 190	12 - 20 / 26400 - 44000
DX20-Demolition	850 / 1870	9900 / 7300	36000 / 7920	45 / 45000	120 - 190 / 31.7 - 50.2	67 @ 120 / 106 @ 190	12 - 20 / 26400 - 44000
DX20-Profiling	850 / 1870	9900 / 7300	42580 / 9368	45 / 45000	120 - 190 / 31.7 - 50.2	67 @ 120 / 106 @ 190	12 - 20 / 26400 - 44000
DX30-Excavating	1400 / 3080	14000 / 10325	45530 / 10017	60 / 60000	140 - 210 / 37 - 55.5	57 @ 140 / 86 @ 210	18 - 30 / 39600 - 66000
DX30-Demolition	1400 / 3080	14000 / 10325	45530 / 10017	60 / 60000	140 - 210 / 37 - 55.5	57 @ 140 / 86 @ 210	18 - 30 / 39600 - 66000
DX30-Profiling	1400 / 3080	14000 / 10325	45530 / 10017	60 / 60000	140 - 210 / 37 - 55.5	57 @ 140 / 86 @ 210	18 - 30 / 39600 - 66000
DX30-Tunneling	1400 / 3080	14000 / 10325	45530 / 10017	60 / 60000	140 - 210 / 37 - 55.5	57 @ 140 / 86 @ 210	18 - 30 / 39600 - 66000
DX35-Excavating	1460 / 3212	24100 / 17774	78380 / 17244	90 / 90000	240 - 340 / 63.4 - 89.8	55 @ 240 / 78 @ 340	25 - 35 / 55000 - 77000
DX35-Demolition	1460 / 3212	24100 / 17774	78380 / 17244	90 / 90000	240 - 340 / 63.4 - 89.8	55 @ 240 / 78 @ 340	25 - 35 / 55000 - 77000
DX35-Profiling	1460 / 3212	24100 / 17774	78380 / 17244	90 / 90000	240 - 340 / 63.4 - 89.8	55 @ 240 / 78 @ 340	25 - 35 / 55000 - 77000
DX35-Tunneling	1460 / 3212	24100 / 17774	78380 / 17244	90 / 90000	240 - 340 / 63.4 - 89.8	55 @ 240 / 78 @ 340	25 - 35 / 55000 - 77000
DX45-Excavating	2550 / 5610	36100 / 26624	95000 / 20900	120 / 120000	300 - 500 / 79.3 - 132.1	48 @ 310 / 77 @ 500	30 - 45 / 66000 - 99000
DX45-Demolition	2550 / 5610	36100 / 26624	95000 / 20900	120 / 120000	300 - 500 / 79.3 - 132.1	48 @ 310 / 77 @ 500	30 - 45 / 66000 - 99000
DX45-Profiling	2550 / 5610	36100 / 26624	95000 / 20900	120 / 120000	300 - 500 / 79.3 - 132.1	48 @ 310 / 77 @ 500	30 - 45 / 66000 - 99000
DX60-Excavating	2800 / 6160	43500 / 32080	114470 / 25183	140 / 140000	360 - 555 / 95.1 - 146.6	45 @ 360 / 70 @ 550	40 - 60 / 88000 - 132000
DX60-Demolition	2800 / 6160	43500 / 32080	114470 / 25183	140 / 140000	360 - 555 / 95.1 - 146.6	45 @ 360 / 70 @ 550	40 - 60 / 88000 - 132000
DX60-Profiling	2800 / 6160	43500 / 32080	114470 / 25183	140 / 140000	360 - 555 / 95.1 - 146.6	45 @ 360 / 70 @ 550	40 - 60 / 88000 - 132000

* at 35 MPa (350 bar) / 5040 psi

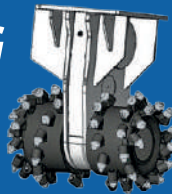


**FIND OUT
MORE**

DRAWINGS



EXCAVATING DRUM



PROFILING DRUM



DEMOLITION DRUM



Drum Cutters KDC dimension

Type	Diameter drum A (mm/in)	Width drum B (mm/in)	Width shaft C (mm/in)	Cutting depth D (mm/in)	Height complete E (mm/in)	Upper connection F x G (mm/in)	Picks # (pcs.)
DX04-Excavating	350 / 13.8	500 / 19.7	90 / 3.5	65 / 2.6	700 / 27.6	320 x 310 / 12.6 x 12.2	2 x 22
DX04-Demolition	350 / 13.8	500 / 19.7	90 / 3.5	65 / 2.6	700 / 27.6	320 x 310 / 12.6 x 12.2	2 x 22
DX04-Profiling	230 / 9.1	500 / 19.7	90 / 3.5	53 / 2.1	690 / 27.2	320 x 310 / 12.6 x 12.2	2 x 43
DX06-Excavating	350 / 13.8	500 / 19.7	90 / 3.5	65 / 2.6	700 / 27.6	320 x 310 / 12.6 x 12.2	2 x 22
DX06-Demolition	350 / 13.8	500 / 19.7	90 / 3.5	65 / 2.6	700 / 27.6	320 x 310 / 12.6 x 12.2	2 x 22
DX06-Profiling	230 / 9.1	500 / 19.7	90 / 3.5	53 / 2.1	690 / 27.2	320 x 310 / 12.6 x 12.2	2 x 43
DX08-Excavating	350 / 13.8	500 / 19.7	90 / 3.5	65 / 2.6	700 / 27.6	320 x 310 / 12.6 x 12.2	2 x 22
DX08-Demolition	350 / 13.8	500 / 19.7	90 / 3.5	65 / 2.6	700 / 27.6	320 x 310 / 12.6 x 12.2	2 x 22
DX08-Profiling	230 / 9.1	500 / 19.7	90 / 3.5	53 / 2.1	690 / 27.2	320 x 310 / 12.6 x 12.2	2 x 43
DX15-Excavating	495 / 19.5	630 / 24.8	135 / 5.3	85 / 3.4	835 / 32.9	405 x 475 / 16 x 18.7	2 x 24
DX15-Demolition	495 / 19.5	630 / 24.8	135 / 5.3	85 / 3.4	835 / 32.9	405 x 475 / 16 x 18.7	2 x 24
DX15-Profiling	495 / 19.5	680 / 26.8	135 / 5.3	85 / 3.4	835 / 32.9	405 x 475 / 16 x 18.7	2 x 30
DX20-Excavating	550 / 21.7	750 / 29.5	145 / 5.7	120 / 4.7	965 / 38	530 x 510 / 20.9 x 20.1	2 x 28
DX20-Demolition	550 / 21.7	750 / 29.5	145 / 5.7	120 / 4.7	965 / 38	530 x 510 / 20.9 x 20.1	2 x 28
DX20-Profiling	465 / 18.3	655 / 25.8	145 / 5.7	78 / 3.1	923 / 36.3	530 x 510 / 20.9 x 20.1	2 x 38
DX30-Excavating	615 / 24.2	900 / 35.4	170 / 6.7	125 / 4.9	1095 / 43.1	600 x 620 / 23.6 x 24.4	2 x 28
DX30-Demolition	615 / 24.2	900 / 35.4	170 / 6.7	125 / 4.9	1095 / 43.1	600 x 620 / 23.6 x 24.4	2 x 28
DX30-Profiling	615 / 24.2	900 / 35.4	170 / 6.7	125 / 4.9	1095 / 43.1	600 x 650 / 23.6 x 25.6	2 x 28
DX30-Tunneling	615 / 24.2	900 / 35.4	170 / 6.7	125 / 4.9	1095 / 43.1	600 x 650 / 23.6 x 25.6	2 x 28
DX35-Excavating	615 / 24.2	900 / 35.4	170 / 6.7	125 / 4.9	1095 / 43.1	600 x 650 / 23.6 x 25.6	2 x 28
DX35-Demolition	615 / 24.2	900 / 35.4	170 / 6.7	125 / 4.9	1095 / 43.1	600 x 650 / 23.6 x 25.6	2 x 28
DX35-Profiling	615 / 24.2	900 / 35.4	170 / 6.7	125 / 4.9	1095 / 43.1	600 x 650 / 23.6 x 25.6	2 x 28
DX35-Tunneling	615 / 24.2	900 / 35.4	170 / 6.7	125 / 4.9	1095 / 43.1	600 x 650 / 23.6 x 25.6	2 x 28
DX45-Excavating	760 / 29.9	1200 / 47.2	240 / 9.5	135 / 5.3	1345 / 53	740 x 780 / 29.1 x 30.7	2 x 32
DX45-Demolition	760 / 29.9	1200 / 47.2	240 / 9.5	135 / 5.3	1345 / 53	740 x 780 / 29.1 x 30.7	2 x 32
DX45-Profiling	760 / 29.9	1200 / 47.2	240 / 9.5	135 / 5.3	1345 / 53	740 x 780 / 29.1 x 30.7	2 x 28
DX60-Excavating	760 / 29.9	1400 / 55.1	240 / 9.5	135 / 5.3	1345 / 53	740 x 780 / 29.1 x 30.7	2 x 40
DX60-Demolition	760 / 29.9	1400 / 55.1	240 / 9.5	135 / 5.3	1345 / 53	740 x 780 / 29.1 x 30.7	2 x 40
DX60-Profiling	760 / 29.9	1400 / 55.1	240 / 9.5	135 / 5.3	1345 / 53	740 x 780 / 29.1 x 30.7	2 x 60



Valvola di Velocizzazione
Speed Valve
Eilgangventil
Speed Valve
Valvula de Velocidad
Скоростной клапан



Moltiplicatore di pressione BOOSTER
Pression multiplier BOOSTER
Druckmultiplikator BOOSTER
Multiplicateur de pression BOOSTER
Multiplicador de presión BOOSTER
Множитель Давления BOOSTER



Peso attrezzatura
Equipment weight
Eigengewicht
Poids de l'outil
Peso del implemento
Вес оборудования



Rotazione continua 360°
360° rotation
360° Kontinuierliche Rotation
Rotation continue 360°
Rotación continua a 360°
Непрерывное вращение на 360°



Peso escavatore
Excavator weight
Baggergewicht
Poids du porteur
Peso Escavadora
Вес экскаватора



Portata olio della rotazione
Rotation oil flow capacity
Oelfluss der Rotation
Débit hydraulique rotation
Caudal de aceite necesario para la rotación



Peso escavatore - posto benna
Excavator weight - stick mounting
Baggergewicht - Loeffelstiehlmontage
Poids du porteur - au but du
Peso escavadora al segundo brazo
Вес экскаватора (Рукоять)



Pressione di esercizio rotazione
Rotation Pressure
Oeldruck der Rotation
Pression hydraulique rotation
Presión necesaria para la rotación
Давление ротации



Peso escavatore - posto braccio
Excavator weight - boom mounting
Baggergewicht - Baggerarmmontage
Poids machibe - montage a la place du
balancier
Peso escavadora al balancin



Pressione di esercizio escavatore
Excavator working pressure
Oeldruck der Bagger
Pression hydraulique excavateur
Presión de la Escavadora
Давление откр./закр. челюстей

F3

Forza in punta
Tip force
Schliesskraft auf die Spitze
Force à la pointe
Fuerza en punta
Мощность на кончике



Portata olio escavatore
Excavator oil flow capacity
Oelfluss der Bagger
Débit hydraulique excavateur
Caudal aceite de la Escavadora
Поток откр./закр. челюстей



Lunghezza lama
Steel blade length
Messerlaenge
Longuer couteau
Anchura cuchilla
Длина ножей

All illustrations and numerical data in this catalog are purely indicative and subject to change at our discretion and without notice. We therefore reserve the right to modify them with a view to improving and continuously developing our product.