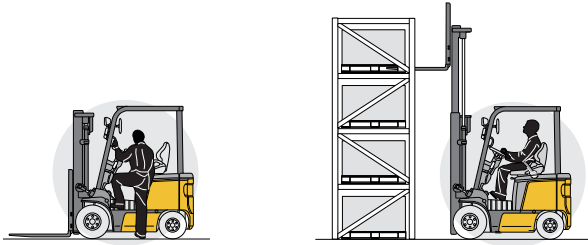


Electric forklift truck

Electric forklift truck 4-wheel front traction, AC technology and DC lifting motor, full-free-view mast lifting from 3.300 to 6.000 mm, integrated side-shift, power steering, steering column multiple adjustable, LCD display with 3 different power output possibilities E (Economy) S (Super) P (Power) Characterized by its handiness and compact dimensions, it is suitable for all commodity uses.



we make ideas alive

OMG S.p.A.
via dell'Artigianato, 12
46023 - GONZAGA (MN) Italy
Tel. + 39 0376 52.60.11
Fax. + 39 0376 58.80.08
www.omgindustry.com
info@omgindustry.com

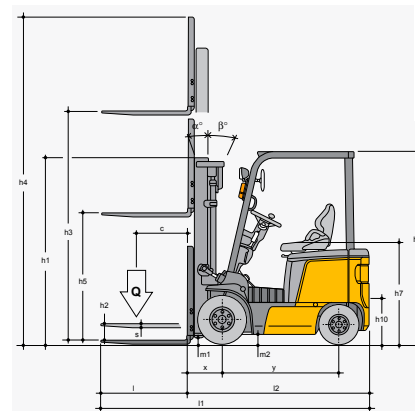


Azienda Certificata
ISO 9001:2008 N°7236 MN
ISO 9001:2008 N°23355

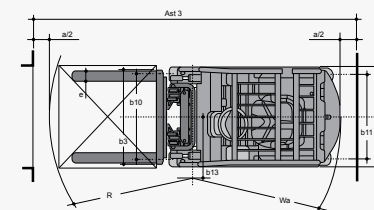
• Ergos III 15 TA4 ac

Characteristics	1.1 Manufacturer		OMG S.p.A.
		1.2 Manufacturer's model designation	
	1.3 Drive : E (electric)		E
	1.4 Type of control : S (steering wheel) R (seated)		S / R
	1.5 Load capacity	Q (t)	1.5
	1.6 Load centre distance	c (mm)	500
	1.8 Load distance, centre of drive axle to fork	X (mm)	375
	1.9 Wheelbase	Y (mm)	1.250
Weights	2.1 Service weight (battery included)		Kg 2.710
	2.2 Axle loading (with load)	front / rear	Kg 3.645 / 565
	2.3 Axle loading (without load)	front / rear	Kg 1.120 / 1.590
Wheels - Chassis	3.1 Tyres : se (superelastic)		se
	3.2 Front wheels size	mm	6,00 - 9
	3.3 Rear wheels size	mm	16 x 6 - 8
	3.5 Wheels : number front / rear (x = traction)		2x / 2
	3.6 Track width, front	b 10 (mm)	910
	3.7 Track width, rear	b 11 (mm)	900
	Dimensions	4.1 Mast tilting forward / backward	
4.2 Lowered mast height		h1 (mm) 2.145	
4.3 Free lift		h5 (mm) 1.610	
4.4 Lifting height		h3 (mm) 3.265	
4.5 Extended mast height		h4 (mm) 3.860	
4.6 Free lift		h2 (mm) 155	
4.7 Overhead guard (cab)		h6 (mm) 2.050	
4.8 Seat height		h7 (mm) 1.000	
4.12 Coupling height		h10 (mm) 390	
4.19 Total length		l1 (mm) 3.100	
4.20 Length to forks face		l2 (mm) 1.950	
4.21 Overall width		b1 / b2 (mm) 1.070	
4.22 Forks dimensions		s / e / l 35 / 100 / 1.150	
4.23 Fork carriage Class / Type A, B		II A	
4.24 Fork carriage width		b3 (mm) 920	
4.31 Ground clearance, under the mast		laden	m1 (mm)
4.32 Ground clearance, centre of wheelbase		laden	m2 (mm) 95
4.33 Aisle width with pallets 1000 x 1200 forking side 1200		Ast3 (mm) 3.400	
4.34 Aisle width with pallets 800 x 1200 forking side 800		Ast3 (mm) 3.525	
4.35 Turning radius		Wa (mm) 1.700	
4.36 Smallest pivot point distance		b13 (mm)	
Performances	5.1 Travel speed	laden / unladen	Km / h 14 / 16
	5.2 Lifting speed	laden / unladen	m / s 0.35 / 0.58
	5.3 Lowering speed	laden / unladen	m / s 0.43 / 0,6
	5.5 Drawbar pull		N
	5.6 Max drawbar pull		N 750 / 300
	5.7 Gradient performance		%
	5.8 Max gradient performance		% 14.3 / 20
	5.9 Acceleration time (10 m)		s
	5.10 Service brake M (mechanical) I (hydraulic) IV (inversion braking)		M / I
	El. Motor	6.1 Traction motor, rating S2 60 min	
6.2 Lifting motor, rating S3 15%		KW 8.6	
6.3 Battery according DIN 43531 / 35 / 36 A, B, C, no		no	
6.4 Battery voltage, nominal capacity K5		V / Ah 48 / 320	
6.5 Battery weight (± 5 %)		Kg 695	
6.6 Battery consumption according VDI cycle		KWh / h	
Others	8.1 Type of travel control		AC
	8.2 Operating pressure for attachments		bar 145
	8.3 Oil volume for attachments (max available)		l / min
	8.4 Sound level at driver's ear		dB (A) < 70
	8.5 Tow coupling, type DIN		

servo-steering	s	extra hydraulic function	o
adjustable steering column	s	backwards light	s
LCD display	s	working lights	s
BDI/hour meter with lifting cut-off at 80% discharge	s	complete cabin	o
traction speed visualization	s	half cabin	o
3 different power output possibilities	s	no marking tyres	o
wide visibility mast	s	cold store execution	o
side-shift	s	heating system	o
s=standard		o=option	



TWIN FRONT WHEELS DIMENSIONS (OPTION)			
total width	b1	mm	1.270
front wheel base	b10	mm	1.055
turning radius	Wa	mm	1.745



	h3		h1	h4	h4 (1)	h2	h5	h5 (1)	(Q) t
	2.965 dx	mm	1.995	3.560	4.030	155	1.460	990	1.5
	3.265 dx	mm	2.145	3.860	4.330	155	1.610	1.140	1.5
	3.465 dx	mm	2.245	4.060	4.530	155	1.710	1.240	1.5
	3.665 dx	mm	2.345	4.260	4.730	155	1.810	1.340	1.5
	3.965 dx	mm	2.545	4.560	5.030	155	2.010	1.540	15
	4.465 dx	mm	2.795	5.060	5.530	155	2.260	1.790	14
	4.965 dx	mm	3.045	5.560	6.030	155	2.510	2.040	1.0 / 1.35*
	4.315 tx ffl	mm	1.995	4.910	5.380	/	1.460	990	1.35 / 1.4*
	4.765 tx ffl	mm	2.145	5.360	5.830	/	1.610	1.140	1.3 / 1.35*
	4.965 tx ffl	mm	2.245	5.560	6.030	/	1.710	1.240	1.1 / 1.3*
	5.465 tx ffl	mm	2.410	6.060	6.530	/	1.875	1.405	0.8 / 1.2*
	5.965 tx ffl	mm	2.595	6.560	7.030	/	2.060	1.590	0.55 / 1.1*

(1) with load guard protection 470 mm / * twin front wheels

Technical specification according VDI 2198

Information and data are given for information only, OMG S.p.A. will have the sole right for technical changes and improvements without giving any notice.