

# FL936F-II

## WHEEL LOADER



# FOTON LOVOL

### LOVOL HEAVY INDUSTRY CO.,LTD.

Add: No.192 S Beihai Road, Weifang, Shandong, China. PC: 261206

Tel: +86-536-7527076 Fax: +86-536-2288909 Web: [www.lovol.com](http://www.lovol.com)

Specifications and designs are subject to change without prior notice.

Machines shown may include optional parts.

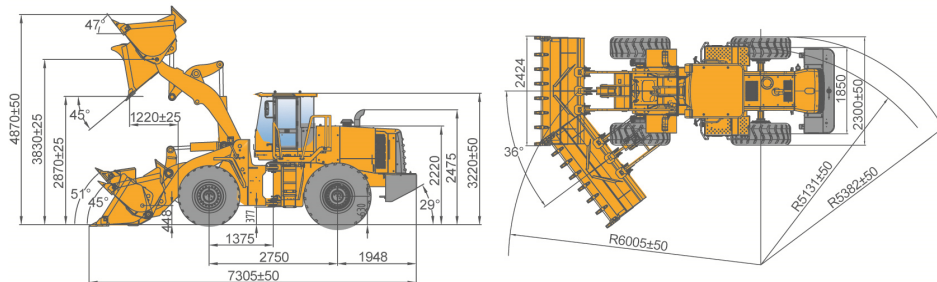
The above parameters are subject to change without notice, the illustrations in text is not always the type of standard models.

**ADHESIVE FOR DEALER CONTACT**



## Products Information

SPECIFICATIONS			UNITS	FL936F-II (YUCHAI)	FL936F-II (WEICHAI)	FL936F-II (DCEC)
Main Specifications	Rated Load		kg	3000	3000	3000
	Operating Weight (Standard)		kg	10300	10800	10300
	Bucket Capacity		m³	1.8	2.2	1.8
	Boom Lifting Time		S	5.7	5.7	5.7
	Total Cycle Time		S	10.5	10.5	10.5
	Max.Traction Force		kN	92	92	92
	Max.Breakout Force		kN	120	115	120
Engine			mm	7250×2420×3220	7305×2424×3220	7250×2420×3220
	Model		—	YUCHAI YC6B125-T20	WEICHAI WP6G125E22	DCEC 6BT5.9-C130
	Type		—	Six cylinder in line, direct injection, self- inspiration and water cooled	Six cylinder in line, direct injection, Turbo charged and water cooled	Six cylinder in line, direct injection, Turbo charged and water cooled
	Horsepower		kW/rpm	92/2200	92/2200	97/2200
	Peak Torque/Speed		N-m/rpm	463/1400-1600	500/1400-1600	560/1500
	Bore×Stroke		mm	Φ108×125	Φ105×130	Φ102×120
	Displacement		L	6.871	6.754	5.9
	Fuel consumption in rated working condition		g/kW-h	235	225	235
	Fuel Tank		L	140	140	140
Drivetrain	Travel Speed	Forward	km/h	0-37	0-37	0-37
		Reverse	km/h	0-31.5	0-31.5	0-31.5
	Gear Shift		/	F4/R2	F4/R2	F4/R2
	Max. Gradeability		°	30	30	30
	Steering Angle		°	36	36	36
	Tire		—	17.5-25	17.5-25	17.5-25
	Service brake		—	Caliper disc brake		
	Parking brake		—	Flexible shaft controlled caliper disc brake		
Hydraulics	Min. Turning Radius	Center of Outside tire	mm	5131	5131	5131
		Outside of the bucket	mm	6005	6005	6005
	Working System Pressure		Mpa	16	16	16
	Working System Displacement		ml/r	63	63	63
	Steering System Pressure		Mpa	14	14	14
Performance Data	Steering System Displacement		ml/r	63	63	63
	Oil tank		L	110	110	110
	Wheelbase		mm	2750	2750	2750
	Wheel Tread		mm	1850	1850	1850
	Min.Ground Clearance		mm	375	375	375
	Dump Height – fully raised,45° dump		mm	2870	2870	2870
	Dump Reach – fully raised,45° dump		mm	1150	1220	1150



## Allied attachments



General Purpose  
Bucket 1.8m³  
[ Standard arm ]



General Purpose  
Bucket 2.0m³  
[ Standard arm ]



Coal Bucket  
Bucket 2.2m³  
[ Standard arm ]



Rock Bucket  
1.5m³  
[ Standard arm ]



Coal Bucket  
2.5m³  
[ Standard arm ]



Side Dump Bucket  
1.5m³  
[ Standard arm ]



Quick Coupling Bucket  
1.5m³  
[ Standard arm ]



Parallel fork  
[ Standard arm ]



Grass Grapple  
2300mm  
[ Standard arm ]



Log Grapple  
1633m  
[ Standard arm ]



Snow Blade  
[ Standard arm ]



General Purpose  
Bucket 1.8m³  
[ Long arm ]

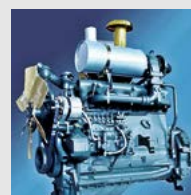


Coal bucket  
2.5m³  
[ Long arm ]



Large Bucket  
3.0m³  
[ Long arm ]

## Features of FL936F-II



■ Equipped with Weichai-DEUTZ WP6G125E22 engine, advanced technology, excellent durability, powerful efficiency. Yuchai YC6B125-T20 and DCEC 6BT5.9-C130 engines are optional.



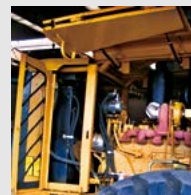
■ Mature Shantui torque convertor and excellent Hangchi power shift transmission, adopted to the simple structure and reliable quality. Dry-brake axle is manufactured by FOTON LOVOL with excellent performance.



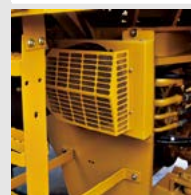
■ Full hydraulic load-sensing steering enables light and smart operation. Dual-pump flow-converging implement hydraulic system offers energy and high efficiency. 24° taper seal accompanied by O-ring face seal provides durable leak-free connection. Humanization designed joystick effectively reduces operator fatigue for long time operation.



■ Flat glass and 360° view cab offer a full scene. Optional safety cab, which passed FOPS&ROPS test, guarantees the safety of operator.



■ The radiator utilizes two-layer layout to allow better air flow. The adaptation to high working condition is improved, allowing normal work under 45°C. Side opening hood with gas spring makes daily checking easier. 130% enhanced strength is realized by skeletal structure.



■ Optimized A/C system with significant performance. Independent radiation enables the condenser a better cooling effect. Space in cab is enlarged after evaporator was moved outside of the cabin.



■ Water-proof plug connector improves reliability of electrics.



■ Front and rear frames are center-articulated with small turning radius and smart maneuverability. It is capable and flexible to work in tight quarters. Consistent overlap of front and rear wheel tracks saves the energy when loader turns around, and it also offers a protection for tires and driveshaft.



■ Bucket blade is made from the special advanced material with outstanding performance on wear resistance testing. More durable reliability comes from co-operating with one of the first level manufacture in China.



■ New designed hood in front axle protects brake caliper from sand or stone when loading work. Thus could reduce abrasion of brake caliper.