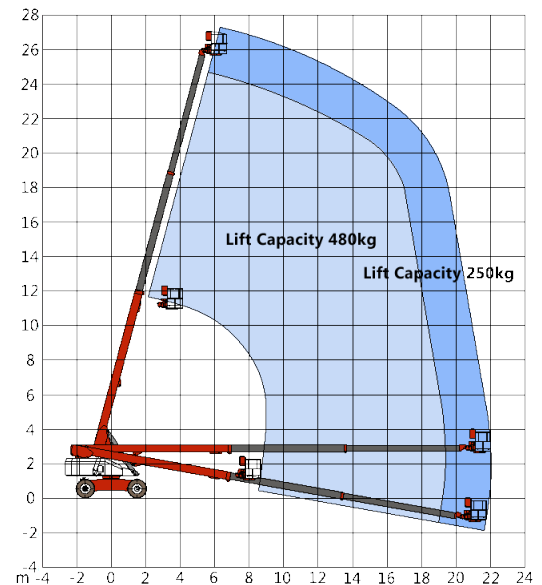
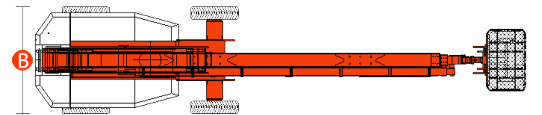
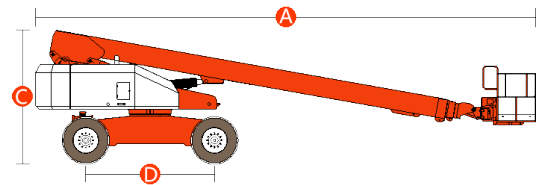


### Specifications

Models	GTBZ26	
Dimensions	Metric	US
Platform height max.	25.8 m	85 ft
Working height max.*	27.8 m	91 ft
Horizontal reach max.	22 m	72 ft 2 in
<b>A</b> Length - stowed	11.54 m	37 ft 9 in
<b>B</b> Width - stowed	2.49 m	8 ft 2 in
<b>C</b> Height - stowed	2.88 m	9 ft 4 in
<b>D</b> Wheelbase	3.0 m	9 ft 8 in
Ground clearance	0.41 m	1 ft 3 in
Platform size(L*W*H)	1.45 m* 0.85 m* 1.24 m	4 ft 8 in* 2 ft 8 in* 4 ft 1 in
<b>Productivity</b>		
Max. platform occupancy	2	2
Lift capacity	250 kg (Unlimited)	551 lbs (Unlimited)
	480 kg (Limited)	1058 lbs (Limited)
Turntable rotation	360° continuous	360° continuous
Platform rotation	160°	160°
Drive speed - stowed	0~5.2 km/h	0~3.2 mph
Drive speed - raised	0~1.1 km/h	0~0.7 mph
Gradeability**	30% (2WD) 45% (4WD)	30% (2WD) 45% (4WD)
Turning radius - inside	2.44 m	8 ft
Turning radius - outside	5.84 m	19 ft 2 in
Turntable tailswing	1.46 m	4 ft 8 in
Max. allowable slope	3°	3°
Max. noise on normal use	82 dB(A)	82 dB(A)
Drive & steer model	2WD*2WS / 4WD*2WS	2WD*2WS / 4WD*2WS
Tire Size / Type	12.00 – 20 / solid	12.00 – 20 / solid
<b>Power</b>		
Power Source	Original Cummins/Perkins Engine	Original Cummins/Perkins Engine
Fuel tank capacity	160 L	42.27 gal
Control voltage	12 VDC	12 VDC
Power	60 KW	60 KW
<b>Weight***</b>		
Overall weight	16442 kg (2WD) /	36248 lbs (2WD) /
	16532 kg (4WD)	36447 lbs (4WD)
<b>Standards Compliance</b>	CE/ ISO/ ADR/ ARAMCO	CE/ ISO/ ADR/ ARAMCO



\* The metric equivalent of working height adds 2 m to platform height. U.S. adds 6 ft to platform height.

\*\* Gradeability applies to driving on slopes.

\*\*\* Weight will vary depending on options and/or country standards.

### Hunan Sinoboom Heavy Industry Co., Ltd.

Address: No.128, East Jinzhou Avenue, Jinzhou New District, Changsha, Hunan, China

Tel: +0086-731-87116222 Email: sales@sinoboom.com

Website: [www.sinoboom.com](http://www.sinoboom.com)