



POWER TO LIFT

HMF 9520K-RCS

Product flyer



All the power and reach you need

The 9520K crane is the biggest crane in our product range and features all the strength and reach you need. Besides being very powerful, the crane comes with a wide variety of options and a minimal cost of ownership. To reduce the cost of ownership the crane is designed to be service-friendly, and the clean design with internal hose routing protects against external damage leaving fewer parts exposed.

Why choose the 9520K?

- The strongest crane in our product range with great lifting capacity and reach
- A versatile crane suited for different tasks, i.a. construction and machine transportation
- Precise and user-friendly operation makes the crane manoeuvrable in difficult conditions

PERFORMANCE	9520K6-RCS	9520K7-RCS	9520K8-RCS
Load moment (tm)	76.3	75.1	75.0
Hydraulic reach (m)	16.1	18.3	20.3
Weight excl. stabilizers (kg)	7070	7330	7540
Weight of stabilizers, standard (kg)	1025	1025	1025
Lift-to-weight ratio	9.4	9.0	8.8
Continuous slewing area	∞	∞	∞
Slewing torque (kgm)	8163	8163	8163
Working pressure (bar)	365	365	365
GEOMETRY			
Height above mounting surface (mm)	2495	2495	2495
Width, folded (mm)	2550	2550	2550
Length of crane, no extra valves (mm)	1620	1620	1620
Over-bending on crane (°)	13	13	13
Over-bending on fly-jib (°)	19	19	19

BASIC FEATURES

Electronic speed adaptation system, HDL-D/HD5
Progressive Crane Control (PCC)
Priority Flow Control (PFC)
Dual Power Plus link arm system
Two slewing gears
Proportional control valve PVG 32
Radio remote control of stabilizer beams and stabilizer legs on crane
Internal hose routing

SELECTED OPTIONS

SPECIAL OPTIONS

Fly-jib 1400 or fly-jib 2000 with up to 6 extensions
Power hoist HMF 3200 kg
Personnel basket

STABILITY AND SAFETY

Electronic Vehicle Stability (EVS)
AutoSwitch (ASW)
Monitoring of stabilizer legs down (CYL)
Monitoring of stabilizer beams fully extended and stabilizer legs down (2CYBEL)
Cabin Anti-Crash (CAC)
Alarm flash on stabilizer legs

EXTRA VALVES

2 extra valves
Extra valves in hose reels, externally
Multi-coupling for 2 extra valves

STABILIZER BEAMS AND LEGS

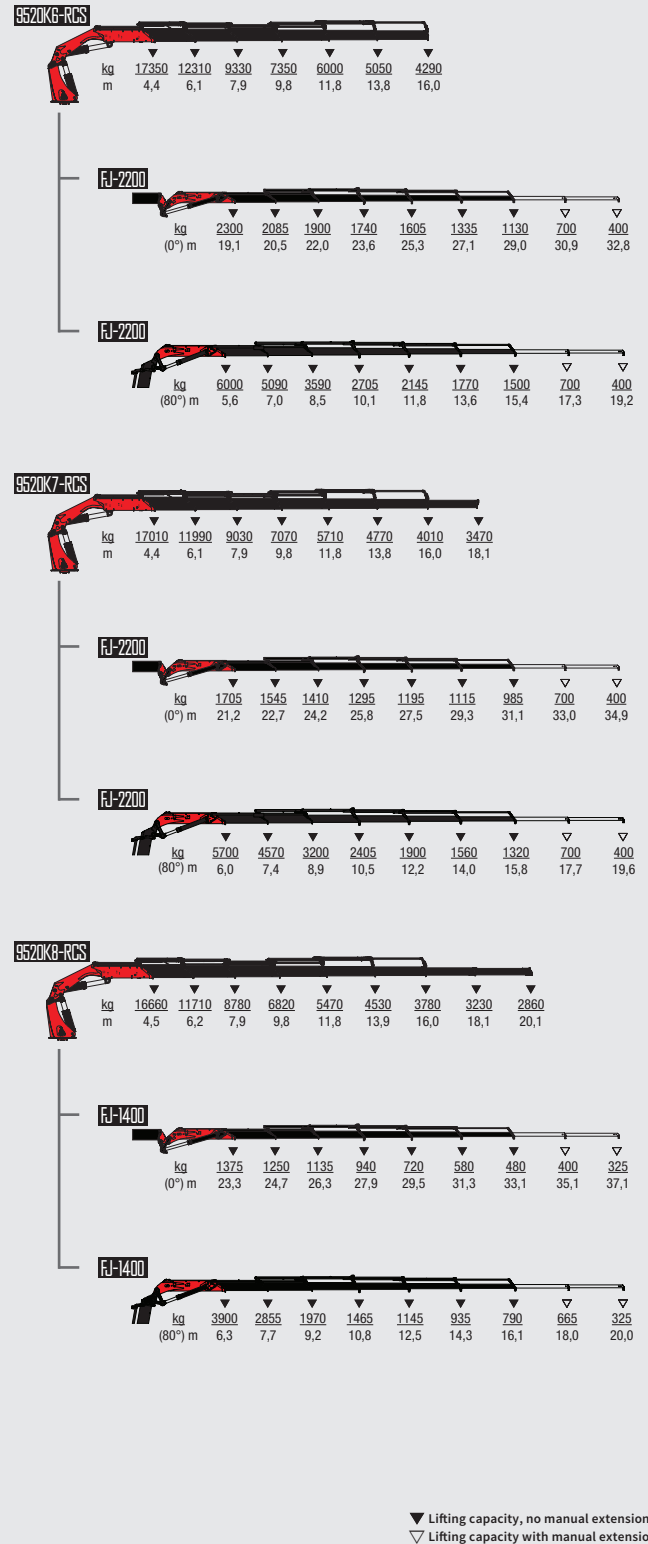
Hydraulic or manual stabilizer beams 8.4m
Hydraulic swing-up stabilizer legs
Footplate with ball joint on stabilizer legs

HYDRAULICS

Oil tank 320 l mounted on the crane
Oil tank 390 l mounted on the crane
Oil cooler with temperature monitoring, q=0.4 kW/°C
Up to 12 radio remote controlled available stabilizer functions
1 radio remote controlled available proportional function (PVG32)

CONTROL

Power radio control box with colour display



For more information visit
hmfcranes.com