

JCB ATTACHMENTS | MIDI & BHL HYDRAULIC HITCH



Positive performance/reinforcement

A constant outward force on the pins from the ram absorbs any pin wear and prevents bucket rattle.

The choice is yours

A variable pin centre design makes this hitch able to pick up a wider range of attachments than ever maximising flexibility, versatility and productivity.

Safety locked in

A double locking mechanism; primary being the ram and secondary two powerful springs securing the rear pin, ensures the safety of your attachment even in the event of a hydraulic failure. Patented form lock shape.

Approved safety

Fully CE approved for current legislation gives you the complete peace of mind.

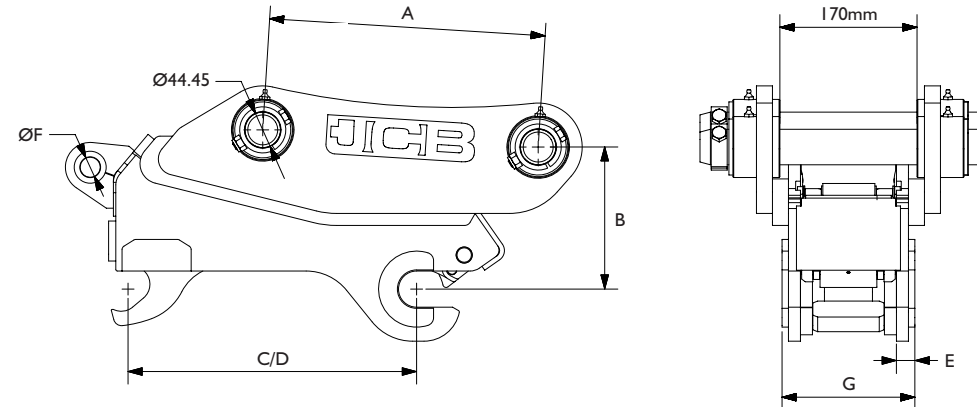
Productivity integrated

Full integration with the machine's electrical and hydraulic systems means no additional control box is required giving you superior visibility, greater ease of use and seamless operation.



FEATURES AND BENEFITS

- Double locking mechanism to protect operators, bystanders and machinery, even in the event of a hydraulic failure.
- CE-approved for current and future legislation, offering you complete peace of mind.
- Fully integrated with your JCB machine for perfect harmony of operation.
- Compatible with a wide range of pin centres enhancing versatility by giving you access to the full range of JCB attachments.
- Constant outward force on the pins from the ram preventing bucket rattle.
- Minimal greasing requirements increases uptime.
- Face shovel mode compatible allowing the excavation against walls and under pipes.
- Heavy duty lifting eye offering a capacity of up to five tonnes, subject to machine capabilities.
- Front and rear hooks are specially painted to ensure increased visibility.
- The only hitch signed off by JCB for JCB machines.
- Compatible with the following BHL machines 3CX, 4CX, 5CX and Midi Excavators 65R, 67C, 85Z, 86C, 90Z and 100C.



SPECIFICATIONS

A	Machine pin centres	343mm
B	Hitch offset	177mm
C	Bucket pin centres Max	363mm
D	Bucket pin centres Min	302mm
E	Lifting eye thickness	25mm
F	Lifting eye diameter	28mm
G	Hitch width	166mm