

ic37



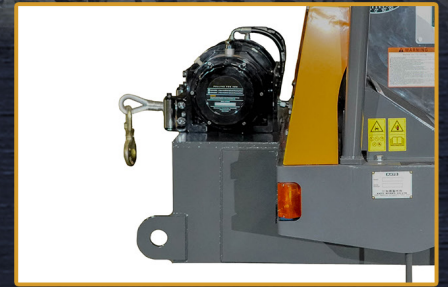
**HIGH-POWERED
62 HP ENGINE**



SWIVEL CAB SEAT



**ACCESSORIES &
CONFIGURATIONS**



SAFE & RUGGED

- Sturdy box-type frame and durable rollers*
- Thick rubber crawler*
- Low center of gravity construction for outstanding durability*
- Inclination indicator for added safety*

EASY TO OPERATE

- Class-leading payload of 6,614 lbs.*
- Dynamic spin-turn capability with independent travel system*
- Instrument panel concentrated on right side of seat*

EASY TO MAINTAIN

- Fully opening engine cover*
- Ample maintenance around pump*
- Battery positioned for easy access*

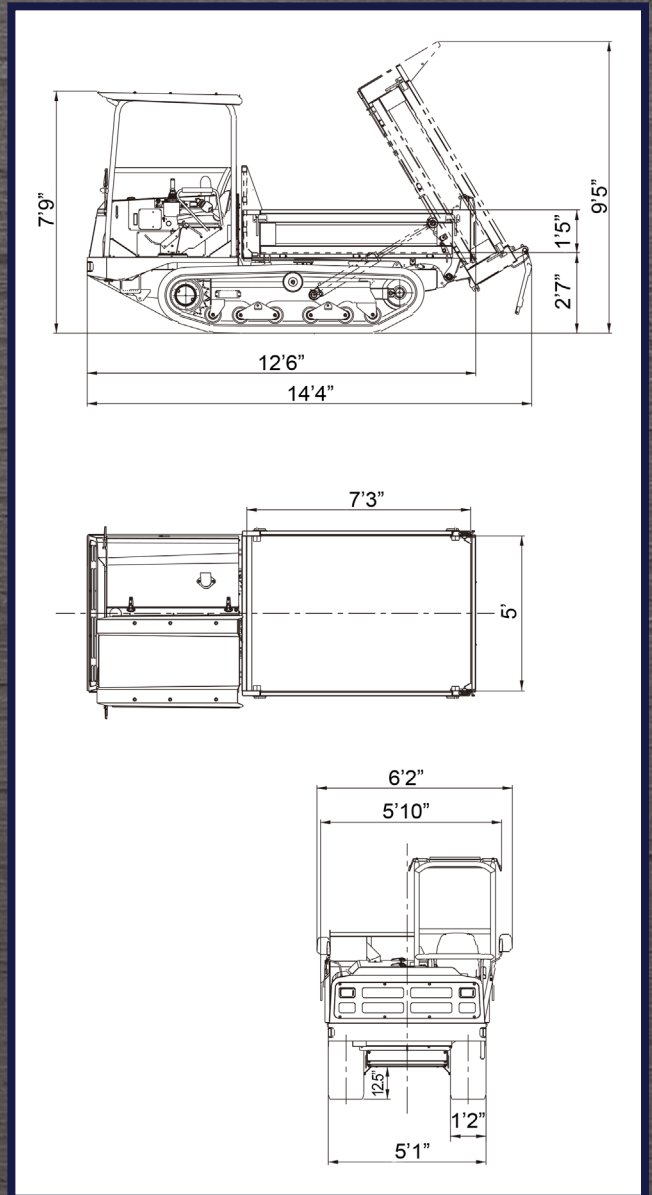
KATO

COMPACT EXCAVATOR SALES, LLC

www.katoces.com

IC37

IC37 Specifications		
Weight	Transport Weight	6,415 lbs.
	Payload	8,157 lbs.
Ground Pressure	Empty	3.7 psi
	Loaded	8.64 psi
Travel Speed	Low Speed	3.9
	High Speed	6.2
Gradeability Dimensions	Total Length	12'6"
	Total Width	6'2"
	Total Height	7'9"
Engine		
	Model	Kubota V2403-T
	Type	DI turbo
	Rated Output	62.7 hp @ 2700 rpm
	Fuel Tank Capacity	18 gals
	Battery	12 voH
Crawler		
	Tumbler Center Dist.	8'7"
	Crawler Carrier Tot. Width	5'1"
	Crawler Width	13"
	Min. Ground Clearance	1'1"
Vessel		
Capacity	Level	2 yds. ³
	Heaped	1.5 yds. ³
Internal Dimensions	Length	7'2"
	Width	4'11"
	Height	1'5"



KATO

COMPACT EXCAVATOR SALES, LLC

SERVICE THAT MEASURES UP

400 Production Court, P.O. Box 667 | Elizabethtown, KY 42701

1-800-538-1447 | Fax: 270-737-0419

WWW.KATOCES.COM