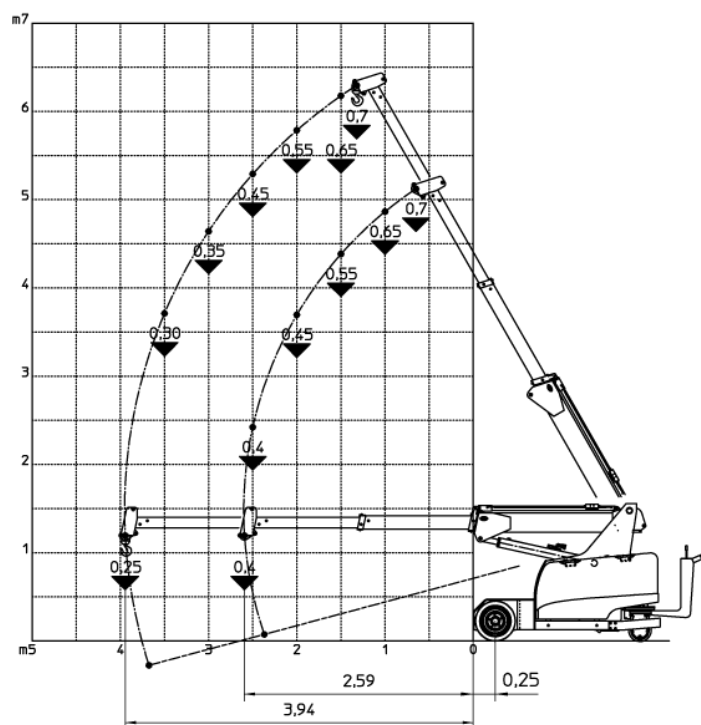
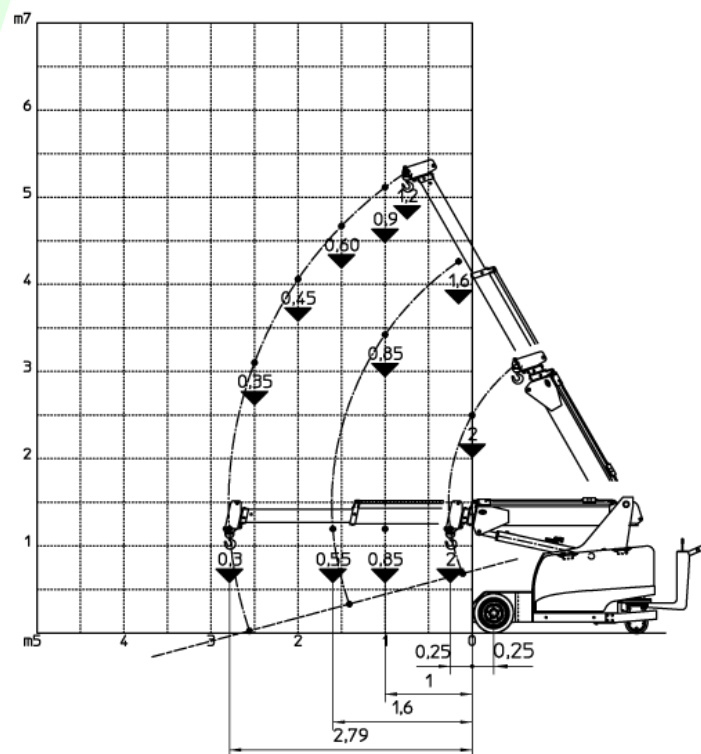




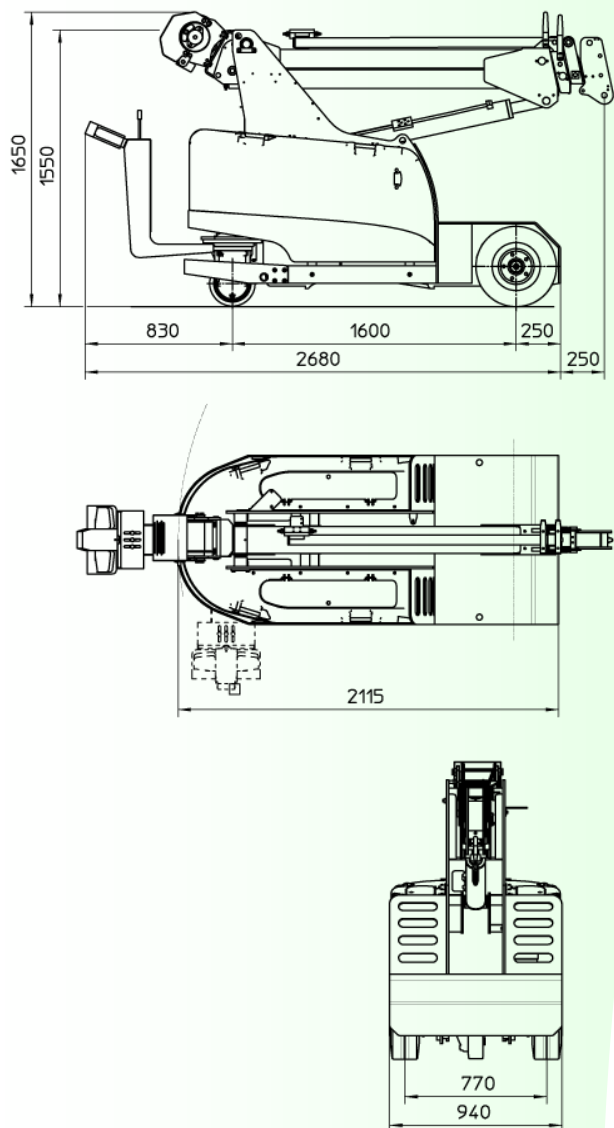
Made in Italy

MC 20

Max capacity 2 t



UNI EN ISO 9001:2008



MC 20

Max capacity 2 t

MODEL	MC 20
CRANE CLASSIFICATION ACCORDING TO UNI ISO 4301-1	A3
REFERENCE STANDARDS	2006/42 CE - 2004/108 CE I.S.P.E.S.L. DIN 15018 (1,3) - 15019 (1) Class H2 B3 ANSI B30.5 - 2007 and subsequent modifications
TRACTION	Electric
BOOM	Hydraulic
POWER TYPE	Electric battery
MAX. CAPACITY (kg)	2000
TOTAL WEIGHT (kg)	1950
BOOM ANGLE - TOPSIDE (°)	60
BOOM ANGLE DOWNSIDE (°)	-15

FRAME:	JMG designed and manufactured, box type, torsion resistant design of high strength structural steel.
BOOM:	Made of moulded and welded quality steel plate, comprised of a base unit, a hydraulic telescopic system and two manual extensions.
MOTOR:	1 Electric motor 2,6 kW 24 V AC
BATTERY:	24 V 420 Ah battery charging indicator.
TRANSMISSION:	Rear axle by reducer.
WHEELS:	Front: 2 Superelastic 18x7x8" - Rear: 1 Polyurethane 255/80.
BRAKING:	Automatic on the rear wheel.
STEERING:	Steering on the rear wheel. Max. steering angle $\pm 90^\circ$.
ELECTRIC PUMP:	2,5 kW 24 V DC Motor
HYDRAULIC SYSTEM:	Hydraulic system powered by a silenced gear pump. Actuators controlled by lever distributor. Filter and safety valve. 22 MPa max. working pressure.
SAFETY DEVICES:	Electronic load moment indicator.

OPTIONAL EQUIPMENT (at extra charge)

Hydraulic winch - High speed winch - Jib - Non-marking wheels - Hydraulic boom with manual extension
Man basket - Hydraulic chain hoist - Cable remote control - Radio remote control - Front wheels braking system

JMG CRANES S.R.L.

Via Buttafuoco, 14 - 29121 PIACENZA
Tel. +39 0523 613646 - E-mail sales@jmgcranes.it
www.jmgcranes.it



UNI EN ISO 9001:2008