

MLT 840/MLT 1040

AGRICULTURAL HANDLING solutions



 **MANITOU**

www.manitou.com

A PASSION FOR FARMING



As partners to the farming industry for more than 20 years, we know your business is **demanding**, and on today's modern farm the materials handling plays an important part in the daily farm handling jobs, so you can be sure you'll be able to find within our farming range **THE** Manitou you need.

The MLT 840 and 1040 rough terrain telehandler is the ideal choice for **performance**. Their impressive capabilities enable you to carry out all your **farm handling** tasks: animal feed, harvesting work, bulk loading and unloading, straw and hay handling.

and unloading, straw and hay handling.

Arable, dairy and livestock farmers, cereal growers, cooperatives and agricultural contractors will appreciate the qualities of these machines. More than just a handling solution, Manitou offers you a product which both looks good and is comfortable to use: inside and outside have been cleverly designed to satisfy you. These machines benefit from innovations conceived by our engineers and designers: JSM@*, command unit, ECS**, etc. You get greater **comfort** and **productivity**.

When you choose Manitou, you can count on a fork lift truck for long term durability. You also benefit from the package of services provided by your dealer: after-sales service, servicing and maintenance contracts, on-site repairs and financing solutions.

Why all this? Because, like you, we take pleasure in a **job well done!**



* Joystick Switch and Move, patent applied for by Manitou BF
** Easy Connect System: hydraulic decompression of the accessory line

“A real agricultural handling **solution**”



PERFORMANCE ON YOUR FARM

4000 kg:

The MLT 840 and 1040 's maximum capacity allows you to move up to 4 tonnes and - better still - to tip up to 3 tonnes into a 4.5 m high trailer.

Up to 9.60 m:

The boom lets you carry loads in height up to :

- 7.55 m (MLT 840)
- 9.60 m (MLT 1040)

3.77 m:

A turning radius that makes no compromise : performance means agility!





You choose

	Motors (cv)	Transmission	Gearbox	Pump type	Flow/pressure (l/min-bar)
MLT 840-115 PS	115	Torque convertor	M-Shift® with Lock-up	Variable flow	150
MLT 840-137 PS	137	Torque convertor	M-Shift® with Lock-up	Variable flow	180
MLT 1040-137 PS	137	Torque convertor	M-Shift® with Lock-up	Variable flow	180

The MLT 840 and 1040 have the new M-Shift® gearbox equipped with 5 speeds giving you smooth gear-shifts in all situations.

Goes anywhere

Agricultural profile tyres, high ground clearance, an impressive tractive effort and a regulated cooling system : you will be able to work efficiently in any situation. The MLT 840 AND 1040 have been developed to help you manage your farm operations.



YOU FEEL GOOD...



A new standard in agricultural telehandlers.

As we know you will be spending a lot of your time in your vehicle, we wanted you to enjoy optimum **comfort and technology**.

The interior of the MLT leaves nothing to be desired with its superb bodywork. The refined dashboard, the materials used, the smart finish and the technologies proposed all contribute to the **top-of-the-range feel of the cab**.

The new design of your driving position is a true model of ergonomic prowess. The architecture has been carefully planned to provide a **generous amount of space** and equipment perfectly suited to your needs are available as standard or on option: cloth seat, fully adjustable steering column (height/depth), sun visor, roof screen, electric window, air conditioning, automatic wheel alignment, all help to provide you with a comfortable working environment.

Exclusive to Manitou, **JSM** lets you control all movements with one hand safely and intuitively: raising and lowering the boom, extending and retracting, crowding and tilting, control over the hydraulic line to the attachment, forward/reverse direction of travel or switching the **M-Shift® gearbox** to manual. You always keep one hand on the steering wheel to maintain full control of your MLT.

The new dashboard features a digital information screen displaying the next maintenance period, the gear engaged, travel speed, boom angle, fuel consumption and lots of other information useful to your day-to-day work.





“...but you have to go home in the end!”

**“Adapting
to your requirements”**



EACH TO THEIR OWN **STYLE**




Reacting to customer choice is a Manitou principle. That's the reason you **can choose between** 3 levels of finish: **Classic, Premium** and **Elite**.

Because all your requirements are important, Manitou provides you with complete peace of mind in all versions of the MLT.



Standard and optional equipment

 **CLASSIC**  **PREMIUM**  **ELITE**

	 CLASSIC	 PREMIUM	 ELITE
Fork carriage	●	●	●
Rear view mirror	●	●	●
Radiator auto cleaning system	●	●	●
Radio player	●	–	–
CD/MP3 radio	○	●	–
Bluetooth radio	○	○	●
Mechanical cloth seat	●	–	–
Pneumatic cloth seat	○	●	–
Low-frequency pneumatic cloth seat	○	○	●
Air conditioning	○	●	●
Attachment line decompression system: ECS	○	●	●
Manual accelerator	○	●	●
Boom suspension	○	○	●
Xenon worklight	○	○	●
Semi-automatic wheel realignment	○	○	●
Adjustable, continuous hydraulic accessories line	○	○	●
Hydraulic locking (accessories)	○	○	○
Internal rear view mirror	○	○	○
Boom lighting	○	○	○

● Standard ○ Option – Not available

COMBINE POWER AND PERFORMANCE

DESIGNED TO OPTIMISE POWER AND FUEL EFFICIENCY

Each telehandler must have a **suitable power unit** to give you the best engine/machine torque: too little power and you lose efficiency, too much power could increase consumption to no effect.

To transform minimum fuel into maximum efficiency, your MLT 840 and 1040 are fitted with a **John Deere 4.5 I** four-cylinder engine complying with Interim Tier 4/Stage IIIB standards and developing 115 (MLT840 only) **or 137 HP**. These engines are equipped with an Exhaust Gas Recirculation (EGR) valve combined with a Diesel Particulate Filter (DPF).

The cooling system has been designed to offer **efficiency** and **economy**. Featuring an **electronic regulating device**, the cooling system controls the fan speed automatically according to engine temperature, leading to significant fuel savings. Equipped as standard with an **automatic air flow inverter**, your telehandler can "breathe" perfectly in all situations to provide excellent working conditions regardless of engine speed.

“Optimising the power of your engine”



M-SHIFT® GEARBOX: SIMPLICITY AND EFFICIENCY

The new five-speed **M-Shift® gearbox** is designed for smooth gear changing in all situations. Two modes of operation are available: **automatic and manual**.

In automatic mode:

You shift from one gear to another with minimum torque interruption. The gearshift program adapts to the torque and speed demanded by the job at hand, and **determines the optimum gear automatically**. This lets you engage a low gear, for example, when you are towing a trailer on hilly roads to recover torque and speed.

You choose the top gear in which you wish to travel: **D, 4, 3** or **2**. In **D**, your machine will derive the full benefit of the five gears available to offer you optimum performance.

M-SHIFT® gearbox command unit

- 1 Gear selector
- 2 Hydraulic line A control
- 3 Hydraulic line B control



When making heaps of silage or picking up cereals, you may decide to go no higher than third gear. In this case, you select 3 and your MLT 840 or 1040 will take care of the gear changes, quickly and smoothly, but will never engage a gear higher than third.

In manual mode:

You decide which gear you wish to engage using the \oplus and \ominus buttons on the JSM.

Lock-up :

The MLT 840 and MLT1040 are fitted as standard with a torque converter lock-up function which drives the transmission system directly over **23 km/h in fourth gear** and **38 km/h in fifth**. This system **improves the efficiency** of your machine, increases its tractive effort and reduces fuel consumption.

115 or 137 HP:

The 115 and 137 available horsepower offers moderate fuel consumption on an everyday basis for maximum performance.

*MLT 840 uniquement.

Five-speed Powershift:

Designed for performance and economy, the new M-Shift® automatic gearbox fitted as standard on the MLT 840 also offers you flexibility and comfort.

“Work **quickly**
and **effectively**”



YOU WILL HAVE TIME TO SPARE

Save yourself time to concentrate on what matters - that's Manitou's philosophy when it comes to handling: fast working cycles and driver comfort are good examples.

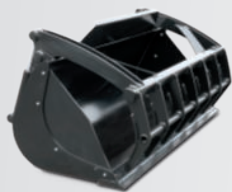
For maximum efficiency, Manitou offers you a machine which is simple to use. **Quick and easy to learn** (JSM, controls perfectly placed), your MLT840 AND 1040 are the solution to all your farm handling duties.

Manœuvrability is essential! You will be able to do even more work: the more time you spend at the wheel of your Manitou the more your efficiency will be increased.

With the **LSU** (Load Sensing Ultra) system using variable-displacement pumps up to **180 l/min**, movements can be cumulated for improved working efficiency. You can modulate the hydraulic speed of your boom head attachment in both directions by means of two flow regulators. Once you have set up the system to suit, you can for example **open** a bale clamp **quickly** and **close** it **slowly**, without even thinking about it! Very practical when handling bales of haylage!

Your productivity and safety depends on **attachments** that are tailored to your handler's **specifications**. When developing our machines we qualify the attachment that will be able to give you optimal performance and that comply with the norms in force. Choose a MANITOU approved accessory, the best choice for your MLT!

Some accessories:



Multifunction grab bucket



Bale clamp



Collector brush



Large volume manure fork



HP self washer



150 or 180 l/min:

The piston pump of your MLT 840, combined with the JSM, delivers a maximum flow rate of 150 or 180 l/min for quick and accurate movements.

4 x 4 x 4:

4 wheel drive and 4 wheel steer = manoeuvrability for getting out of all situations.

YOU ARE SAFE

SORRY, WE DON'T DESIGN TOYS

Our **design department**, employing more than 200 engineers and technicians, have specialised in the design of agricultural telehandlers **for more than 20 years**. With more than 50 registered patents, our knowledge and expertise with regard to the structure of the machine offers you reliability and durability. A fully comprehensive testing procedure and "best practice" methods are applied to ensure quality manufacturing at all levels, utilising all the latest modern technology.

Specialists in agriculture, Manitou develop their product range with the customer in mind, selecting components to suit the most arduous farm handling needs, **your machine like the Manitou company is 100% dedicated to agriculture**: the tyres, transmission and even the cooling system have been logically chosen and assembled.



**“The assurance
of working
in total safety”**

“A machine **100%** dedicated to **agricultural use**”



YOU ARE PROTECTED

Your working environment must above all be a safe area.

The excellent **stability** of the MLT 840 and 1040 combined with the aggravating movement arrestor allows you to handle maximum loads up to **4 tonnes** with complete confidence.

Your **safety** is further reinforced by the **presence detector** located in the seat. Travel movements are only allowed when you are sitting in the driving seat.

The cab has been especially designed to **protect** you. Satisfying **ROPS/FOPS*** requirements, withstanding rolling over, heavy objects falling and therefore prevents distortion to the cab.

A large window area, **lateral engine**, low boom pivot as well as the high seating position gives you **360° visibility** guaranteeing both your own safety and that of everyone around you.

* ROPS: rollover protection structure
FOPS: falling objects protection structure



SEE FURTHER

OFFERING YOU **MADE-TO-MEASURE SERVICES**

The close proximity of a network of experts at your service.

Your local MANITOU dealer is dedicated to providing a first class after sales back up. The know-how, experience and commitment of MANITOU, at more than 500 dealers throughout the world, ensure you will have professional support on a daily basis.

Lease and Finance Solutions. Your MANITOU dealer is your best partner to assist you in your financial planning. Manitou Finance offer a fully flexible choice of financial solutions.

Maintenance and after-sales service: so that your telehandler is operational all year round, your dealer can offer you maintenance contracts suited to your budget and your needs. You will reduce your usage costs and have the guarantee of your equipment being regularly monitored. MANITOU is committed to maintaining your productivity on a daily basis.



A financial contract allowing you to be aware in advance of the technician's labour and travel costs for preventive maintenance of your machine (parts and supplies not included in the contract).



Maintenance contract which includes the totality of the cost of preventive maintenance for your machine -labour, travel, supply of consumables needed for periodic maintenance.

You can sign up for an extension of guarantee of 12 or 24 months.

MANIPLUS Agri



A simple and flexible fleet-management system (with or without geolocation) to keep track with precision of the utilisation of your machine.





“Accompanying
the changes in
your business”

REDUCE YOUR ENVIRONMENTAL FOOTPRINT

The MANITOU group is committed to a **sustainable development** program based on three progress axes: **products, people and suppliers.**

Taking account of **the environment, and the safety and health** of our customers is a priority when designing our products. Our Research and Development teams are working on the **MLT 840 and 1040 environmental balance sheet.** This global evaluation, which takes account of impacts **from the choice of components up to the end of the product life cycle** aims to identify additional levers for improvement, such as recyclability, in order to reduce the environmental impact of MANITOU machines.

Our Ancenis production site's ISO 14001 certification guarantees that we are in control of the impact of our industrial activity on the natural environment. Following a logic of continuous improvement, three other group production sites have also obtained ISO 14001 certification and **100% of our French sites' waste is now recovered.**

Finally, in order to best reduce the impacts generated when a machine is used, the optimal management of the motor regime, according to the power required, **minimises your fuel consumption** and your harmful emissions.

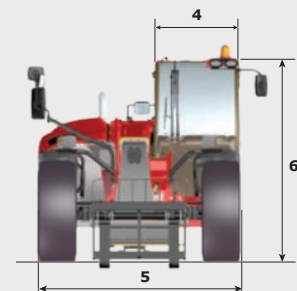
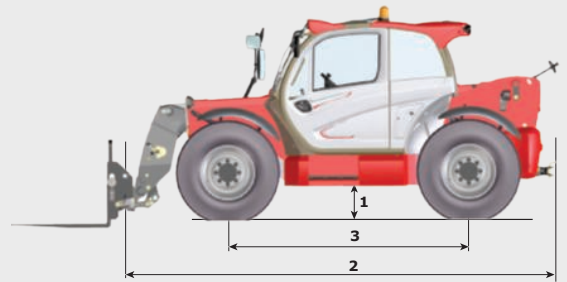
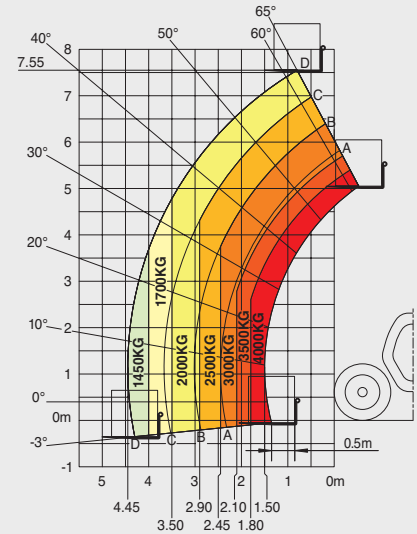
	MLT 840-115 PS	MLT 840-137 PS
--	----------------	----------------

Lifting		
Max. capacity	4000 kg	
Max. lifting height	7.55 m	
Max. outreach	4.45 m	
Reach at max. height	0.90 m	
Break-out force with bucket	5222 daN	
Unladen time		
Lifting	8.70 secs	8.40 secs
Lowering	5.20 secs	4.90 secs
Extension	6.50 secs	6.30 secs
Retraction	5.40 secs	5.20 secs
Crowd	3.20 secs	3.00 secs
Dump	2.50 secs	2.40 secs
Tyres		
	460/70 R 24	
Service Brake		
	hydraulic oil immersed multi-disc braking on front/rear axles	
Engine		
	JOHN DEERE Stage III B	
Type	4045 PWX	
Cubic capacity	4 cylinders/4500 cm ³	
Power	115 HP/86 kW	137 HP/102 kW
Max. torque	480 Nm - 1500 rpm	534 Nm - 1500 rpm
Injection	direct	
Cooling	water	
Laden drawbar pull	9100 daN	9400 daN
Transmission		
	torque converter	
Gearbox	Powershift M-Shift® - Lock-up	
Reversing shift	electrohydraulic control	
Number of gears (forward/reverse)	5/3	
Max. travel speed (may vary according to applicable regulations)	40 kph	
Hydraulics		
	150 l/min - 290 bar	180 l/min - 290 bar
Pump	swashplate piston pump electronically controlled variable cubic capacity	
Control valve	DDIC	
Capacities		
Hydraulic oil	175 l	
Fuel	143 l	
Unladen weight (with forks)		
	8401 kg	
Dimensions		
1. Ground clearance	0.41 m	
2. Overall length to carriage	5.37 m	
3. Wheelbase	2.88 m	
4. Overall width of cab	0.995 m	
5. Overall width	2.39 m	
6. Overall height	2.40 m	
Standard forks (length x width x thickness)	1200 x 125 x 50 mm	
Turning radius (over tyres)	3.77 m	
Noise and vibration		
Noise at driving position (LpA)	80 dB	
Environmental noise (LwA)	105 dB	
Vibration to whole hand/arm	< 2.5 m/s ²	

Rough terrain load chart

standard EN1459 B

Machine on tyres with forks



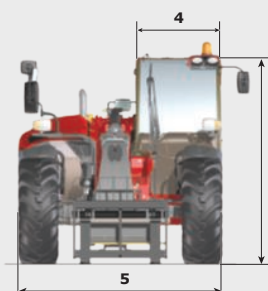
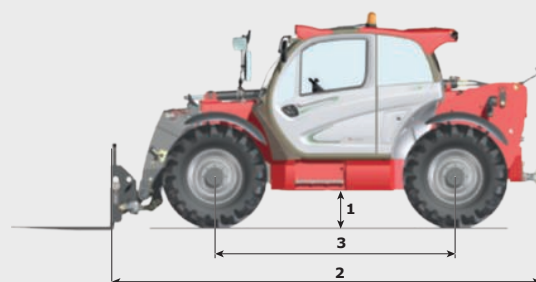
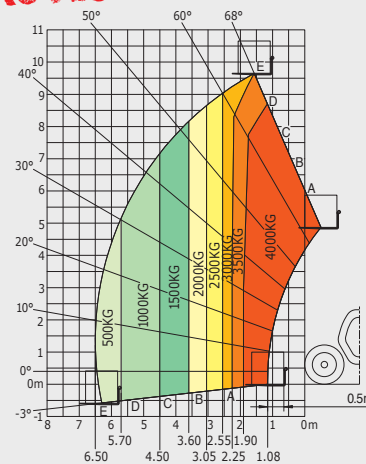
MLT 1040 137 PS

Lifting	
Max. capacity	4000 kg
Max. lifting height	9.6 m
Max. outreach	6.5 m
Reach at max. height	1.5 m
Break-out force with bucket	4860 daN
Unladen time	
Lifting	8.6 secs
Lowering	5.36 secs
Extension	11.3 secs
Retraction	9 secs
Crowd	3.8 secs
Dump	2.6 secs
Tyres	460/70-24
Service Brake	hydraulic oil immersed multi-disc braking on front/rear axles
Engine	JOHN DEERE Stage III B
Type	4045 PWX
Cubic capacity	4500 cm ³
Power	137 HP - 102 kW
Max. torque	534 Nm - 1500 rpm
Injection	direct
Cooling	water
Laden drawbar pull	6830 daN
Transmission	torque converter
Gearbox	Powershift M-Shift - Lock-up
Reversing shift	electrohydraulic control
Number of gears (forward/reverse)	5/3
Max. travel speed (may vary according to applicable regulations)	40 kph
Hydraulics	
Pump	180 l/min - 290 bar
Control valve	DDIC
Capacities	
Hydraulic oil	195 l
Fuel	143 l
Unladen weight (with forks)	8740 kg
Dimensions	
1. Ground clearance	0.41 m
2. Overall length to carriage	5.17 m
3. Wheelbase	2.88 m
4. Overall width of cab	0.995 m
5. Overall width	2.39 m
6. Overall height	2.42 m
Standard forks (length x width x thickness)	1200 x 125 x 50 mm
Turning radius (over tyres)	3.77 m
Noise and vibration	
Noise at driving position (LpA)	80 dB
Environmental noise (LwA)	105 dB
Vibration to whole hand/arm	<2.5 m/s ²

Rough terrain load chart standard EN1459 B

Machine on tyres with forks

PROVISIONAL



Your nearest **MANITOU** dealer:



Head office:

B.P. 249 - 430 rue de l'Aubinière - 44158 Ancenis Cedex - France
Tel: 00 33 (0)2 40 09 10 11 - Fax: 00 33 (0)2 40 09 10 97
www.manitou.com



facebook.com/manitou.official