



# ESCORTS RT 40

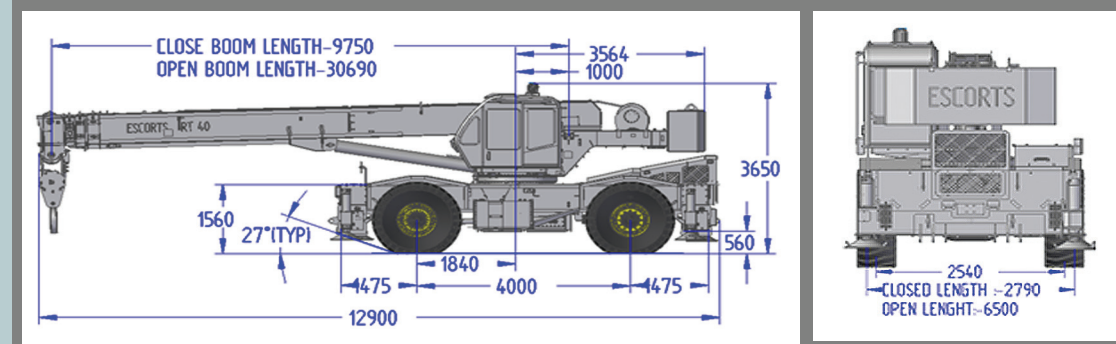
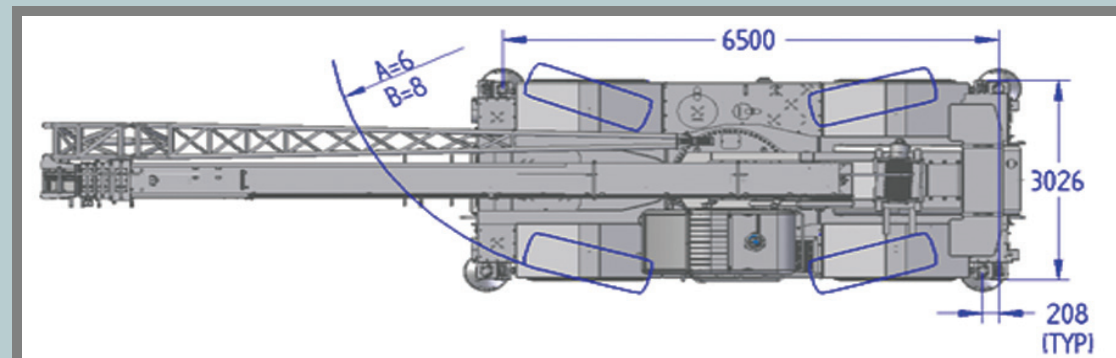
Rough Terrain Hydraulic Mobile Crane

Permissible Hoist Line Load in Kg

No. of part line	1	2	3	4	5	6	7	8
Main winch Hook Load	5000	10000	15000	20000	25000	30000	35000	40000

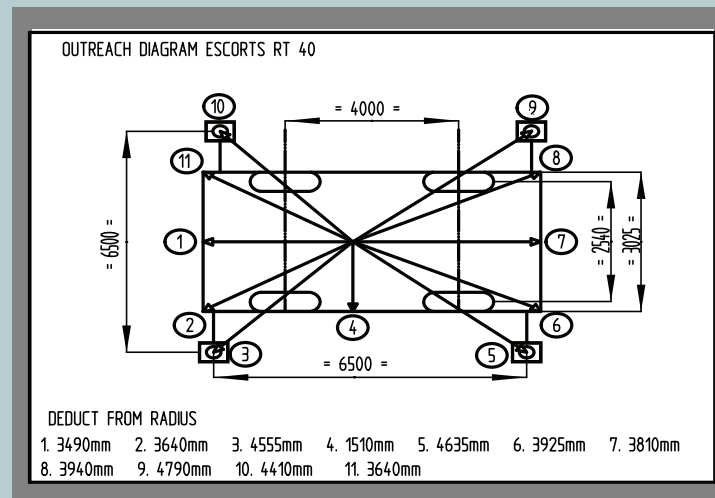
Weight reductions for Load Handling Devices

8.5 M Boom Lattice	
• Stowed (KG)	450
• Erected (KG)	2000



A= 4 WHEEL TURNING RADIUS.

B= 2 WHEEL TURNING RADIUS (FRONT AXLE)



All dimension are in mm and are variable within ± 5%.

**Maximum Capacity**  
40 MT at 3 M Radius on outriggers 360° Slew

**Maximum Capacity**  
20 MT at 3 M Radius on Tyres Over front

4 Part 30.70 M Boom

4x4 Wheel Drive with 4-Wheel Steer



**ESCORTS**  
CONSTRUCTION EQUIPMENT

Escorts Limited, Plot No. 219 Sector 58, Ballabgarh-121 004, Haryana, India

Tel.: + 91 129 2306 300, Fax: + 91 129 2306 572 | e-mail: ece.marketing@escorts.co.in | www.escortsece.com

Accessories as shown in the picture may not be the part of standard fitment and are subject to change without prior notice.

# Technical Data

# Load Chart

## Super Structure Frame

- Super Structure : All welded rigid construction.
- Counter Weight : Removable & bolted to superstructure.

## Boom

- 4 part telescopic boom.
- 3 boom sections are fully powered & synchronized. Last section is mechanically pinned & hydro-mechanically operated.
- Overall length: Retracted - 9.75 m; Extended- 30.70 m.

## Boom Lifting

- Double acting single cylinder with lowering brake valve.
- Angle of elevation -2 deg. to +80 deg.

## Hoisting

- Hydraulic winch with axial piston motor, grooved drum & planetary reduction gear box.

## Slewing

- 360 degree rotation controlled by hydraulic motor.
- Freewheeling safety device for automatic alignment of boom over the load.

## Hook Block

- 40 MT swivel type hook block with 4 sheaves reeved for 8 part line with safety latch.
- Wire rope diameter of 18 / 19 mm.

## Operator Cabin

- Fully enclosed cabin of steel construction, sliding door & emergency exit door with large-sized safety glass windows, adjustable driver seat.

## Crane Controls

- Auto reversal mechanism to ensure correct steering wheel control irrespective of the position of the superstructure in relation to the chassis.
- Operator cabin is equipped with wiper, horn, cabin fan & cab light, crane leveling gauge, free slew pedal, brake pedal, throttle pedal, dynamic brake pedal for slew, electric switch for outrigger operation, transmission gear selector, mechanical slew lock lever, air/hydraulic/pilot pressure gauge, rear steer centering indicator, hydraulic filter clogging indicator, low hydraulic oil level warning, axle lockout switch etc.
- Advanced telematics system that enables to monitor and manage crane remotely by providing information on routine maintenance & health alerts. It also provide usage data with crane movement & location.

## Safety Devices

- Safety devices such as relief valves, balance valves & brake valves fitted in hydraulic system to prevent the accidents.
- Limit switch on boom head for over hoisting snatch block and on winch for over lowering with hydraulic cut off & warning.

## Load Limiting Device

- Indicates boom elevation, boom length, actual load, rated load, load radius, number of falls & boom height.
- In overload condition there is audio visual warning & all such hydraulic operation that tend to increase load moment (unsafe operations) are automatically cut-off while operation like derricking in & hoisting down still being possible.

## Chassis

- Torsion & bending resistant with rigid steel structure box type frame made with high strength alloy steel.

## Outriggers

- Four nos. out and down type, hydraulically operated with fail-safe dual lock valves.

## Engine

- Suitable water cooled, turbo-charged diesel engine of adequate HP.
- Fuel tank – 270 Liters.

## Transmission

- Power shift with build in torque converter with adequate speeds controlled from cab.

## Brakes

- Service: Foot operated, hydraulically applied pneumatically assisted split circuit disc brake on all wheels.
- Parking: Hand operated lever / switch, spring applied hydraulically released front axle mounted disc brake.

## Steering

- Fully hydraulic & independent power steering operated from cab.
- Four steering modes: 2-wheel (Front), 2-wheel (Rear), 4 wheel coordinated & crab.

## Axle

- Front Axle: Drive & steer with differential & planetary reduction hubs, rigid frame mounted.
- Rear Axle : Drive & steer with differential & planetary reduction hubs, centrally pivoted, lateral oscillating with hydraulic locking device.

## Drive

- 4 x 4 for off-road movement & all wheel drive.
- 4 x 2 for road travel, front axle drive.

## Tyres

- Tyres: 18 x 25 32 PR, 4 nos. Earthmover type.

## Electricals

- 2 x 12 volts system
- 2 main head lamps, 2 brake and flashing trafficator lamps at rear, 2 flashing trafficator lamps at front, 1 work lamp.

## Gradeability

- 50% (Unladen)

## Hydraulic Pumps

- One single pump & one double pump mounted on transmission PTO.

## Hydraulic System

- Multi section 3 position proportional & flow sharing directional control valve operated by joystick for slew, telescoping, hoisting and derricking with independent or simultaneous crane operations & progressive speed control.
- Safety valves in all hydraulic cylinders for protection against pipe and hose ruptures.
- Oil cooler for cooling of hydraulic and transmission oil.

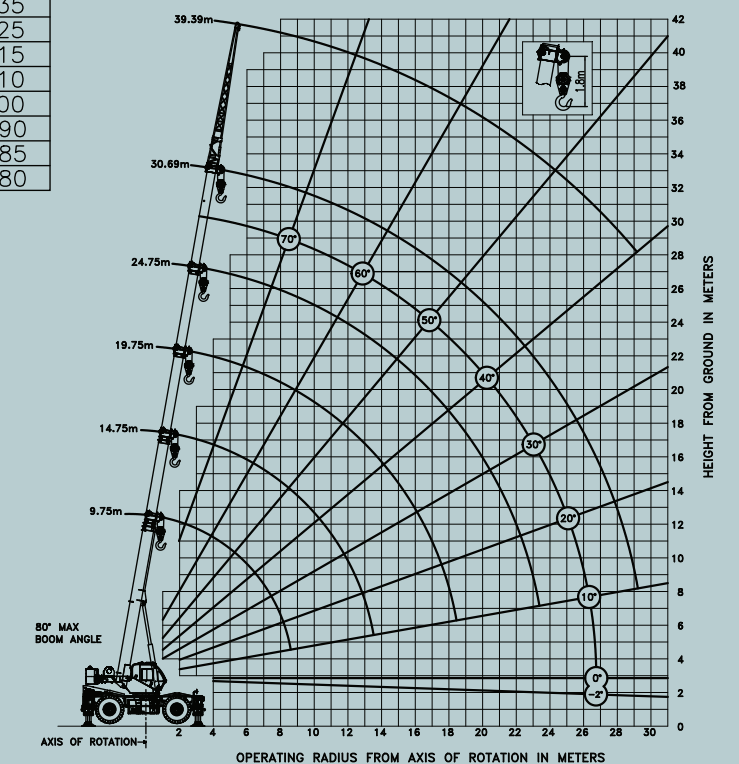
## Optional Extra

- Lattice boom extension 8.5 m
- Marker light
- Heater / Demister
- Emergency wind off system
- Cold starting kit
- Fire detection and suppression system
- Spare wheel & tyre
- Air conditioner
- High tension warning device
- Towing hook
- Centralize lubrication system
- Fog light

LIFTING CAPACITIES (IN METRIC TONNES) ON OUTRIGGERS FULLY EXTENDED AND SET SLEWING RANGE 36 ° 0						
Boom Length (m)						
Working Radius (m)	4th Section housed				Pinned Extn.	Fly Jib
	9.75	14.75	19.75	24.75		
3.0	40.00	—	—	—	—	—
3.5	35.80	—	—	—	—	—
4.0	32.70	23.00	—	—	—	—
4.5	29.00	21.80	—	—	—	—
5.0	26.00	20.90	16.50	—	—	—
6.0	22.00	19.10	15.60	12.00	—	—
7.0	18.20	17.25	14.20	11.40	—	—
8.0	15.60	15.10	12.60	10.60	7.60	—
9.0	—	13.10	11.20	9.60	7.40	—
10.0	—	11.30	10.00	8.60	7.10	—
11.0	—	9.60	8.85	7.60	6.70	—
12.0	—	8.20	7.85	6.80	6.20	3.65
13.0	—	7.10	6.90	6.10	5.80	3.50
14.0	—	—	6.05	5.55	5.40	3.35
15.0	—	—	5.35	5.05	5.10	3.15
16.0	—	—	4.85	4.60	4.70	3.00
17.0	—	—	4.40	4.20	4.30	2.85
18.0	—	—	3.95	3.80	4.00	2.70
19.0	—	—	—	3.40	3.70	2.55
20.0	—	—	—	3.05	3.40	2.40
21.0	—	—	—	2.70	3.15	2.20
22.0	—	—	—	2.40	2.90	2.05
23.0	—	—	—	—	2.65	1.90
24.0	—	—	—	—	2.40	1.80
25.0	—	—	—	—	2.20	1.65
26.0	—	—	—	—	1.95	1.55
27.0	—	—	—	—	1.75	1.45
28.0	—	—	—	—	1.60	1.35
29.0	—	—	—	—	1.45	1.25
30.0	—	—	—	—	—	1.15
31.0	Caution: For 9.75 m boom length ratings, telescope cylinders must be fully retracted and against stops.				—	1.10
32.0					—	1.00
33.0					—	0.90
34.0					—	0.85
35.0					—	0.80

LIFTING CAPACITIES (IN METRIC TONNES) FREE ON WHEELS SLEWING RANGE 360°				
Boom Length (m)				
Working Radius(m)	4th Section housed			
	9.75	14.75	19.75	24.75
3.0	13.00	—	—	—
3.5	11.00	—	—	—
4.0	9.60	9.40	—	—
4.5	8.40	8.20	—	—
5.0	7.35	7.20	7.05	—
6.0	5.80	5.60	5.55	5.45
7.0	4.70	4.50	4.45	4.35
8.0	3.80	3.60	3.55	3.45
9.0	—	2.95	2.85	2.75
10.0	—	2.40	2.30	2.20
11.0	—	1.90	1.85	1.75
12.0	—	1.55	1.45	1.35
13.0	—	1.20	1.10	1.05
14.0	—	—	0.85	0.80
15.0	—	—	0.60	0.55

LIFTING CAPACITIES (IN METRIC TONNES) MOBILE UPTO 4 KMPH SPEED OVERFRONT				
Boom Length (m)				
Working Radius (m)	4th Section housed			
	9.75	14.75	19.75	24.75
3.0	20.00	—	—	—
3.5	17.95	—	—	—
4.0	16.20	16.00	—	—
4.5	14.65	14.55	—	—
5.0	13.40	13.25	13.15	—
6.0	11.35	11.20	11.10	11.00
7.0	9.75	9.60	9.55	9.45
8.0	8.50	8.30	8.25	8.15
9.0	—	7.20	7.10	7.00
10.0	—	5.95	5.85	5.75
11.0	—	4.95	4.85	4.75
12.0	—	4.20	4.10	4.00
13.0	—	3.55	3.45	3.35
14.0	—	—	2.90	2.85
15.0	—	—	2.45	2.40
16.0	—	—	2.05	2.00
17.0	—	—	1.75	1.70
18.0	—	—	1.45	1.40
19.0	—	—	—	1.15
20.0	—	—	—	0.90



Lifting capacities for supported operation only on firm level ground Weight of 40T hook block= 450 kgs.  
Lifting capacity=Actual load + hook block + Chain/Slings.  
These lifting capacities should not exceed 85% of tipping load.  
Crane complies with Indian Standard IS-4573 1982