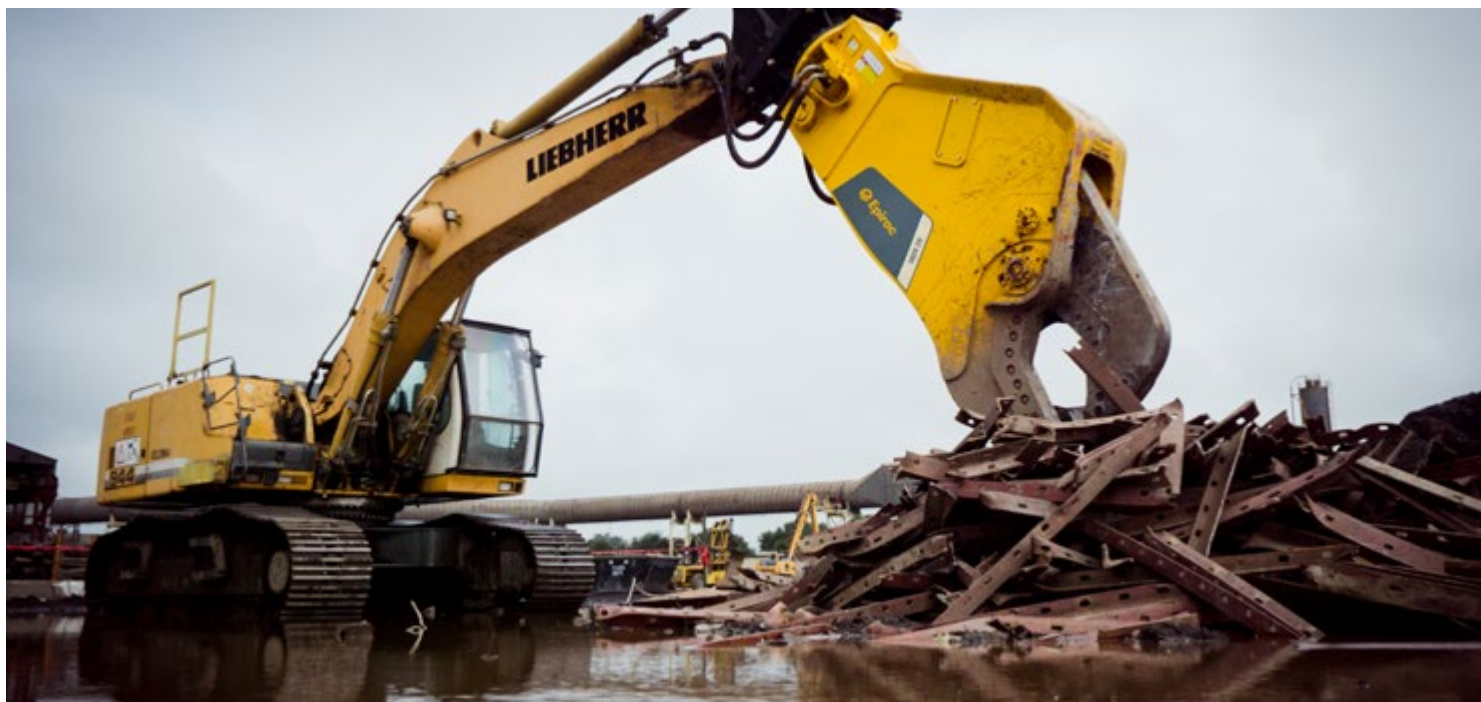


# Cut to the chase

Steel Cutters are ideal for cutting steel structures at demolition sites or recycling metal girders, sheets and cables at scrap yards.

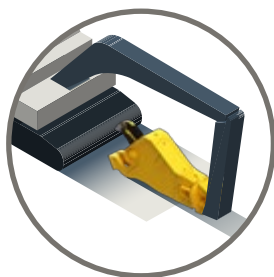




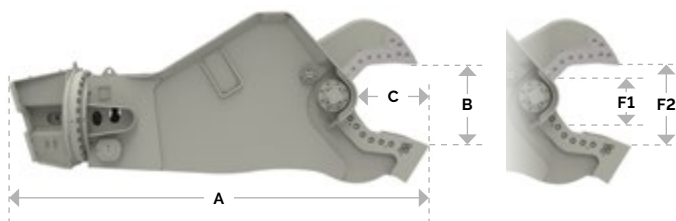
By forcing the material to where the cutter exerts the greatest force, the optimally-shaped jaw cuts through steel easily, no matter the size.



Boom-mounted  
2nd member



Stick-mounted  
3rd member



## SC range

|  |       | SC 270    | SC 600    | SC 2500   | SC 3600   | SC 4500 <sup>3)</sup> | SC 6200 <sup>3)</sup> | SC 8300 <sup>3)</sup> |
|--|-------|-----------|-----------|-----------|-----------|-----------------------|-----------------------|-----------------------|
| Carrier weight class – boom mounted <sup>1)</sup>  | t     | 2 – 4     | 4 – 6     | 16 – 30   | 20 – 38   | 25 – 55               | 30 – 55               | 45 – 65               |
| Carrier weight class – stick mounted <sup>1)</sup> | t     | 4 – 6     | 6 – 9     | 21 – 35   | 32 – 50   | 38 – 60               | 50 – 75               | 65 – 110              |
| <b>Static version</b>                              |       |           |           |           |           |                       |                       |                       |
| Service weight <sup>2)</sup>                       | kg    | -         | -         | 2,550     | 3,830     | 4,480                 | 6,460                 | 8,310                 |
| Product weight                                     | kg    | -         | -         | 2,300     | 3,390     | 4,037                 | 5,780                 | 7,500                 |
| <b>A</b>   | mm    | -         | -         | 2,235     | 2,880     | 3,220                 | 3,555                 | 4,230                 |
| <b>B</b>   | mm    | -         | -         | 445       | 607       | 750                   | 782                   | 947                   |
| <b>C</b>   | mm    | -         | -         | 416       | 544       | 625                   | 701                   | 903                   |
| <b>Rotating version</b>                            |       |           |           |           |           |                       |                       |                       |
| Service weight <sup>2)</sup>                       | kg    | 380       | 650       | 2,750     | 4,030     | 4,880                 | 6,860                 | 9,060                 |
| Product weight                                     | kg    | 340       | 570       | 2,500     | 3,590     | 4,440                 | 6,180                 | 8,250                 |
| <b>A</b>   | mm    | 1,350     | 1,900     | 2,596     | 3,106     | 3,568                 | 3,903                 | 4,730                 |
| <b>B</b>   | mm    | 195       | 290       | 445       | 607       | 750                   | 782                   | 947                   |
| <b>C</b>   | mm    | 200       | 290       | 416       | 544       | 625                   | 701                   | 903                   |
| <b>Static and rotating version</b>                 |       |           |           |           |           |                       |                       |                       |
| <b>F1</b>  | t     | 102       | 138       | 532       | 664       | 813                   | 955                   | 1,338                 |
| <b>F2</b>  | t     | 36        | 46        | 130       | 156       | 168                   | 201                   | 242                   |
| Cycle time (opening/closing)                       | sec   | 2.0 / 2.8 | 1.8 / 2.4 | 2.9 / 3.1 | 2.8 / 2.2 | 3.6 / 2.9             | 5.3 / 3.5             | 4.9 / 3.2             |
| Oil flow rate (opening & closing)                  | l/min | 100       | 120       | 240       | 450       | 450                   | 450                   | 750                   |
| Max. operating pressure (opening & closing)        | bar   | 250       | 300       | 350       | 350       | 350                   | 350                   | 350                   |
| Oil flow rate (rotation)                           | l/min | 15        | 20        | 50        | 50        | 50                    | 50                    | 50                    |
| Max. operating pressure (rotation)                 | bar   | 100       | 100       | 170       | 170       | 170                   | 170                   | 170                   |

<sup>1)</sup> Weights apply to standard carriers only. Any variances must be agreed with Epiroc and/or the carrier manufacturer prior to attachment.

<sup>2)</sup> Attachment with average-sized adapter plate.

<sup>3)</sup> Drainage line required