

ATLET

Atlet AB
SE-435 82 Mölnlycke
Sweden
Tel +46 31-98 40 00
info@atlet.se
www.atlet.com

ATLET
To us, business is personal

Atlet Tergo® reach trucks

ULS • UND • UMS • UHD • UHX

5 models
100%
you.

Get it right with Atlet Total.

Atlet Total means you're in total control over your material handling operations. All the way – from logistics planning and choosing the right trucks, to financing and services – you can increase warehouse efficiency and lower your total costs. Put Atlet Total at work, and focus on your core business.

Logistics

Analysis and planning of warehouse operations and truck fleet sizes.

Trucks

A premium range of warehouse and counterbalance trucks – customised to your needs by Atlet.

Rental

Flexible and tailor-made financing – short term and long term rental with uptime guarantee.

Service

Service agreements adapted to your operations save money and maximise uptime. With your dedicated Atlet mobile service engineer.

Training

Well-trained drivers maximise efficiency and safety in your material handling.

Safety

Inspections, analysis and advice to ensure safe operations and lower costs.

Operation

Analysis tools for daily monitoring of truck use, safety and environmental performance.





A timeless truth about man and machines

In 1993 the Swedish Transport Research Institute TFK, together with Atlet, conducted scientific research (TFK 1993:6) on how to prevent strains on the human body in warehouse truck operations where operators travel sideways. The conclusion was clear: the operator's environment must be fully adjustable. Not exactly rocket science, but applying these insights you can lift your operations to entirely new levels of efficiency.

Proven ergonomics

In 2011, Chalmers University of Technology, Gothenburg, Sweden performed an ergonomic comparative evaluation study on reach trucks from three different manufacturers.

"The result showed that the Atlet Tergo forklift offered more ergonomic working postures than the other forklifts. Observed ergonomic features were a more symmetrical working posture of the back and head resulting in less strain in the shoulder/neck complex. Contributing design factors were tapered, tilting backrest, adjustable floor and presence of the left arm-rest and the position of the steering wheel."*

Anna-Lisa Osvalder

Professor in Human Machine Systems
Chalmers University of Technology



* from studies of (1) theoretical expert analysis of the cabin design, (2) video observations of sitting postures during driving, and (3) subjective estimations of comfort.

We proudly introduce a new ergonomic reach truck range designed to meet the highest of standards:

Yours.

Personalisation is part of the Atlet DNA. Since 1958, Atlet has created innovative and highly personal material handling solutions. The design of an Atlet truck always starts on the warehouse floor, with the focus on the operators and the operation. We've also realised that technology designed around human needs makes people more productive and happy at work. And when we created the new generation Atlet reach trucks the mission was clear and simple: Build the world's most personal truck. We interviewed truck operators and logistic managers across the world. We conducted scientific studies on ergonomics

and repetitive strain injuries and together with our customers, we tested and fine-tuned truck prototypes in the toughest real life conditions. During all stages of product development we've been challenged and guided by one question: "How can we make the truck more personal?" Design, technology, performance, service and financing – all created to fulfil the needs and wants of the world's most demanding truck users in the most personal way. And now we proudly present what we believe is the world's most personal reach truck range: designed to meet the highest standards – your standards.



It's not about the
machine

ProVision concept

The ProVision mast system, the angled over head protection bars and pillars, are optimised for for all-round vision, safety and productivity.

Low mast noise

High-precision mast design, efficient damping of mast movements and soft stop technology contribute to very low noise levels.

Armrest

The right and left armrests relieve the strain on the neck and shoulders and are adjustable to suit each operator.

Tilting seat

For very high lifting the seat backrest can easily be tilted 18° within the cabin area to enhance the operator's vision and ergonomics. (Only for UMS, UHD and UHX)

Mini steering wheel

Atlet's unique mini steering wheel allows effortless manoeuvring with the minimum strain on the arm, neck and shoulders.

Easy-entry instep

The separate footstep gives a low comfortable instep (390 mm). This together with the specially designed instep handle makes it easy to get in and out of the truck.

Adjustable floor

At the touch of a button, the operator can lower or raise the floor by up to 70 mm – for a perfect driving position. (Only for UMS, UHD and UHX).

Personal performance settings

The option of maximum speed 14.5 km/h makes this a very fast reach truck. To suit each operator's driving skills, the truck performance can be individually set in the ATC truck computer. PIN code entry allows authorised use only.

Spacious cabin

A generous roof height and spacious cabin add to the operator's sense of well-being.

Narrow backrest

Our specially designed narrow backrest helps the operator to turn the chest in the driving direction, thus reducing strain on the neck.



Automotive pedal design

To enhance driving safety, the pedals follow the same logic as in a car – speed to the right and braking in the middle. The safety switch to the left is conveniently operated with a minimum of effort. When the truck stands still the parking brake is automatically activated.

Durable wheel

Unique wheel design with large diameter for greater durability.

It's about

you

10% upwards

In approximately 10% of the working time the forks are lifted so high that the operator must look upwards. This strain is reduced by the tilting seat.

1,000 head turns/hour

The operator turns the head more than 1,000 times per hour.

All-round vision

Thanks to our ProVision concept the driver has good vision in all directions ensuring a safe handling.

2,000 arm movements/hour

In one hour, the operator's left arm moves up to 2,000 times.

Relaxed posture

Relieving the pressure on the neck, back, shoulder and elbow, the floating armrest and the mini steering wheel give a relaxed posture with less strain.

Ergonomic shoulder position

Putting the operator's left shoulder towards the backrest, Atlet's mini steering wheel makes it easier to move the body in the direction of the truck.

75% seat contact

75% of the operator's body contact with the truck is through the seat – that's why the seat is so important in ensuring that the operator is efficient the whole shift.

20% in reverse

The operator travels approximately 20% in the fork direction.

70% forward

Most of the time is spent travelling forward. Our mini steering wheel allows a relaxed body position.

74% steering wheel movements

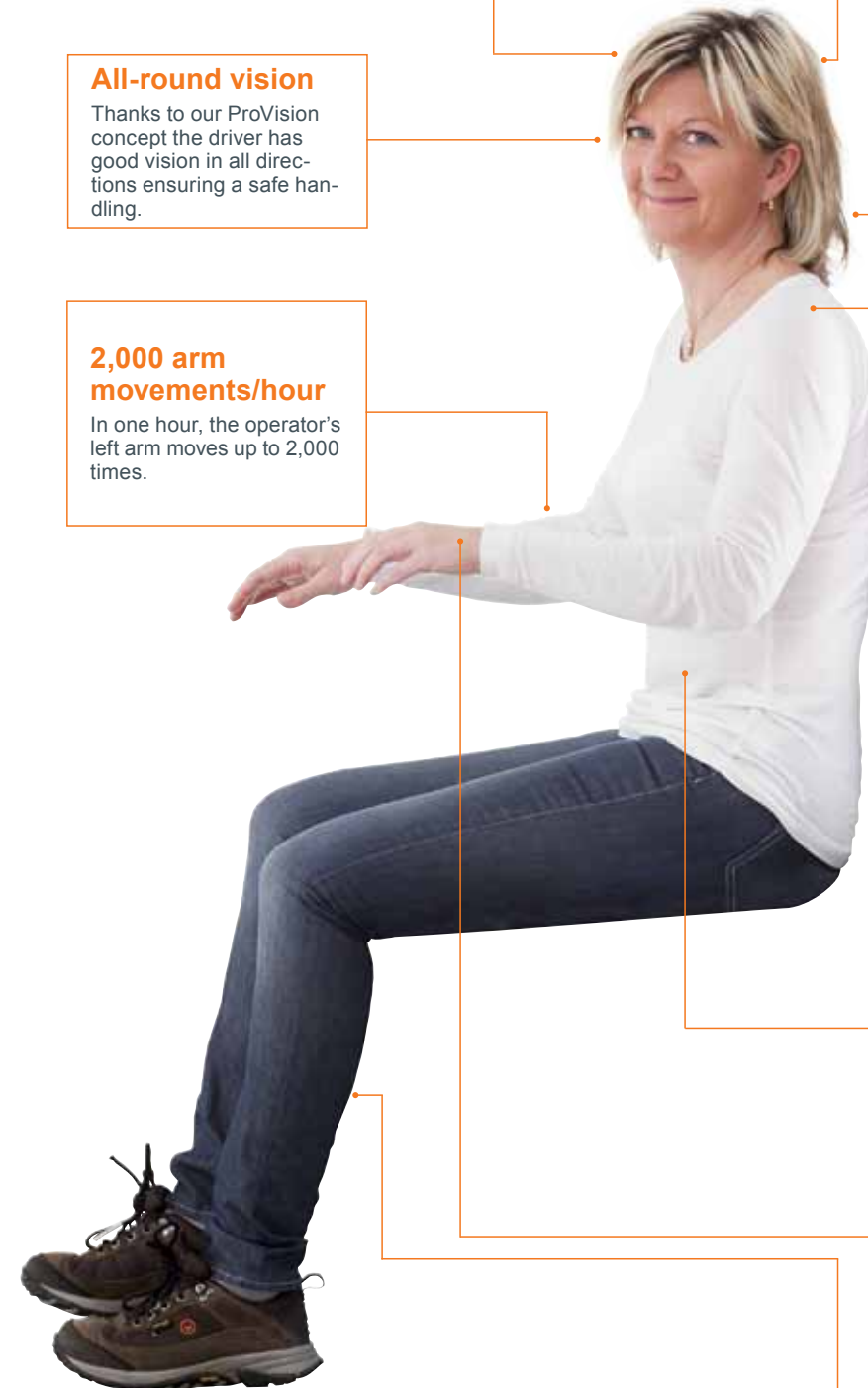
while operating the steering wheel, the left arm is moving for 74% of the driving time.

Intuitive feet

To control speed and the brake, the operator uses the right foot intuitively.

Easy step

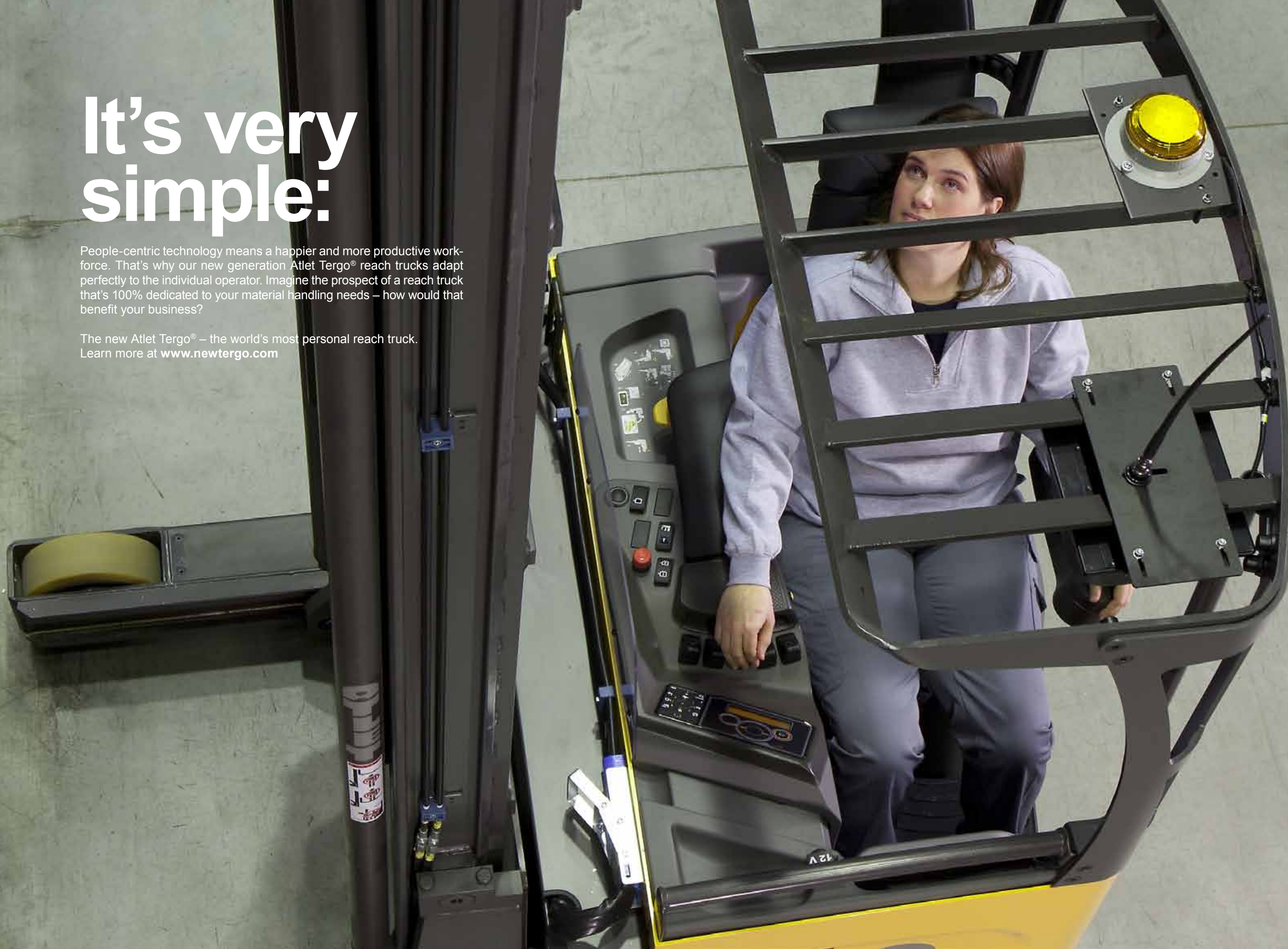
During the shift, the operator enters and leaves the truck many times. Our easy-entry/exit makes this an effortless action.



It's very simple:

People-centric technology means a happier and more productive workforce. That's why our new generation Atlet Tergo® reach trucks adapt perfectly to the individual operator. Imagine the prospect of a reach truck that's 100% dedicated to your material handling needs – how would that benefit your business?

The new Atlet Tergo® – the world's most personal reach truck.
Learn more at www.newtergo.com



Innovative technology for your productivity.

1 Multi-adaptable driver's environment

To keep the operator in focus during the whole shift, the seat, floor, armrest and controls can be personally adjusted to fit any operator size. In total nine different parameters can be adjusted. (ULS/UND seven different adjustments).

2 Personal PIN code settings

Tergo® performance can be set to suit the operation or experience of each operator. The user ID settings are connected to 350 personal PIN codes. Every operator can optimise the truck performance to best suit their preferences.

3 Ergonomic mini steering wheel

Scientific studies show that the operator change steering wheel direction 2000 times per hour. The mini steering wheel with floating armrest is a unique Atlet innovation that adds to operator's relief during long shifts for maximum productivity, control and comfort.

4 Hands-free direction control

By using the accelerator pedal to change travel direction, forward or reverse, the operator can focus on the right hand for using up to three hydraulic functions simultaneously.

5 Intuitive dashboard and control interface

Instrument layout and fingertip control panel are perfectly positioned and angled towards the operator to optimise overview, control and safety. All important operator information, activated functions and safety indicators are clearly displayed.

6 Tilting seat with unique Ergo back rest

State-of-the-art seat, including 18° tilt function for the UMS, UHD and UHX, reduces neck and back strains when handling loads on high levels. The tilting backrest adapts conveniently to the weight of the operator for maximum comfort. With the narrow Ergo backrest it is also easier to turn the chest in the direction of travel, thus helping to reduce repetitive strain injuries.

7 Dynamic Cornering Control, DCC

With Atlet DCC the truck performance is greatly improved, as well as providing maximum safety. DCC allows high cornering speed, but if the operator needs to avoid an obstacle, the truck automatically reduces speed for continued high level of safety. (DCC is included in all Tergo® reach trucks equipped with S3)

S3

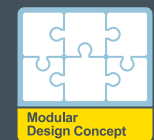
S3 Stability Support System

Boosting the operator's driving confidence, the Atlet S3 ensures industry-leading safety performance. To maintain driving stability in a wide range of situations the S3 technology contains several functions including Dynamic Cornering Control. When handling loads at high levels, the Optimised Performance Control adapts the mast tilt and reach speed to maximise stability and safety. (Option on ULS)



On board diagnosis technology

The Atlet Tergo® truck range feature a unique Atlet Truck Computer (ATC) with a CAN Bus technology, allowing the service engineer to easily and quickly diagnose the truck, and return it back to operation in the shortest possible time, thus keeping uptime to a maximum.



Modular Design Concept

All Atlet trucks are designed according to Atlet's unique Modular Design Concept, which improves quality and limits the number of parts used. Our mobile service engineers therefore carry a limited number of spare parts helping provide a First Time Fix Rate of over 95% and an uptime of more than 98%.



Tergo® ULS

Smart universal tools for warehousing and production – ergonomic, economical and yours.



The compact Tergo ULS is our most nimble and economical reach truck, a genuine Atlet reach truck in every detail. Performance, stability and reliability meet high demands and will ensure productivity and low life cycle cost. This is the optimum combination of performance and economy, just the right universal tool for your medium intensive material handling operations with loads up to 1,400 kg. Innovative ergonomic and safety technology ensure operator efficiency in a wide range of tasks – a vitamin boost for your warehousing, at exactly the right cost.

	ULS 120	ULS 140	UND 140
Rated lift capacity, kg	1200	1400	1400
Load centre, mm	600	600	600
Truck width, mm	1120	1120	1120
Lift height max, mm	7250	7250	8950



> **Intuitive information**

Intuitive driver's environment with clearly displayed information.



> **Nimble chassis**

Nimble chassis (1120 mm width in ULS and UND) facilitates material handling in confined spaces.



> **Innovative mast**

Adding to safety and productivity, Atlet's innovative Pro-Vision mast design includes mast tilt, neatly integrated hydraulic hoses and clear view fork carriage enhancing stability and vision.



Tergo® UND



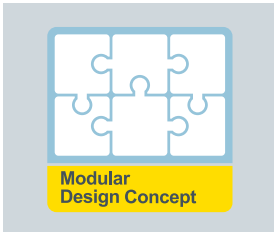
Tergo UND

Based on the narrow chassis but designed for even greater lift heights and lifting performance. If equipped with optional wheels for rail guidance together with overhead guard, it is also suitable for narrow deep stacking. UND is the perfect combination for medium intense applications.



> **Ergologic multi-control**

Ergologic (optional) allows safe and convenient control of all load functions in one grip.



> **Modular Design**

Like all Atlet trucks, the ULS and UND are modular built to maximise uptime and ensure low life cycle costs.

Tergo[®] UMS

The world's most personal reach truck
is also the most open-minded.



The Atlet Tergo UMS is the universal reach truck with a capital U. It's designed to perform almost any material handling task in your warehouse. Internal transport and stacking, with a lift capacity up to 2,000 kg – the UMS performs effortlessly in your high intensive operations. The optional 14.5 km/h performance package makes this a very productive reach truck in efficient material handling, 24/7. Always right, always yours.

	UMS 160	UMS 200
Rated lift capacity, kg	1600	2000
Load centre, mm	600	600
Truck width, mm	1270	1270/1397
Lift height max, mm	8950	8950



> Adjustable floor

Electrically adjustable floor height makes it easy to find the perfect driving position.



> Tilting seat

Tilting seat adapted to operator's weight facilitates high-level load handling.



> Mini steering wheel

The mini steering wheel and floating armrest ensure a relaxed non-twisted driving posture.



> Mast tilt

Tilting mast facilitates safe handling of up to 10 meters, especially in narrow aisles.



> ProVision concept

The hydraulics of Tergo's ProVision masts are neatly integrated in the mast design so as not to obscure operator's vision. Support bars are also made to ensure clear vision.



> Easily accessible battery

The battery is easy to inspect without the operator having to leave the truck, simply by connecting the battery tray to the hydraulic reach out system

Tergo[®] UHD

The tougher it gets,
the more muscles you need.



The toughest operations leave no space for compromises. Just like the Atlet Tergo[®] UHD reach truck. Everything, from the wide robust chassis and the high-precision mast, to truck performance and operational reliability, is designed to meet your highest demands in all conditions. Handling loads of up to 2,500 kg in almost any environment, including cold stores, world-class ergonomics and the unique Atlet modular design ensure service friendly technology to further contribute to flawless 24/7 performance and low life cycle costs.

	UHD 200	UHD 250
Rated lift capacity, kg	2000	2500
Load centre, mm	600	600
Truck width, mm	1270/1397	1397
Lift height max, mm	11500	8950



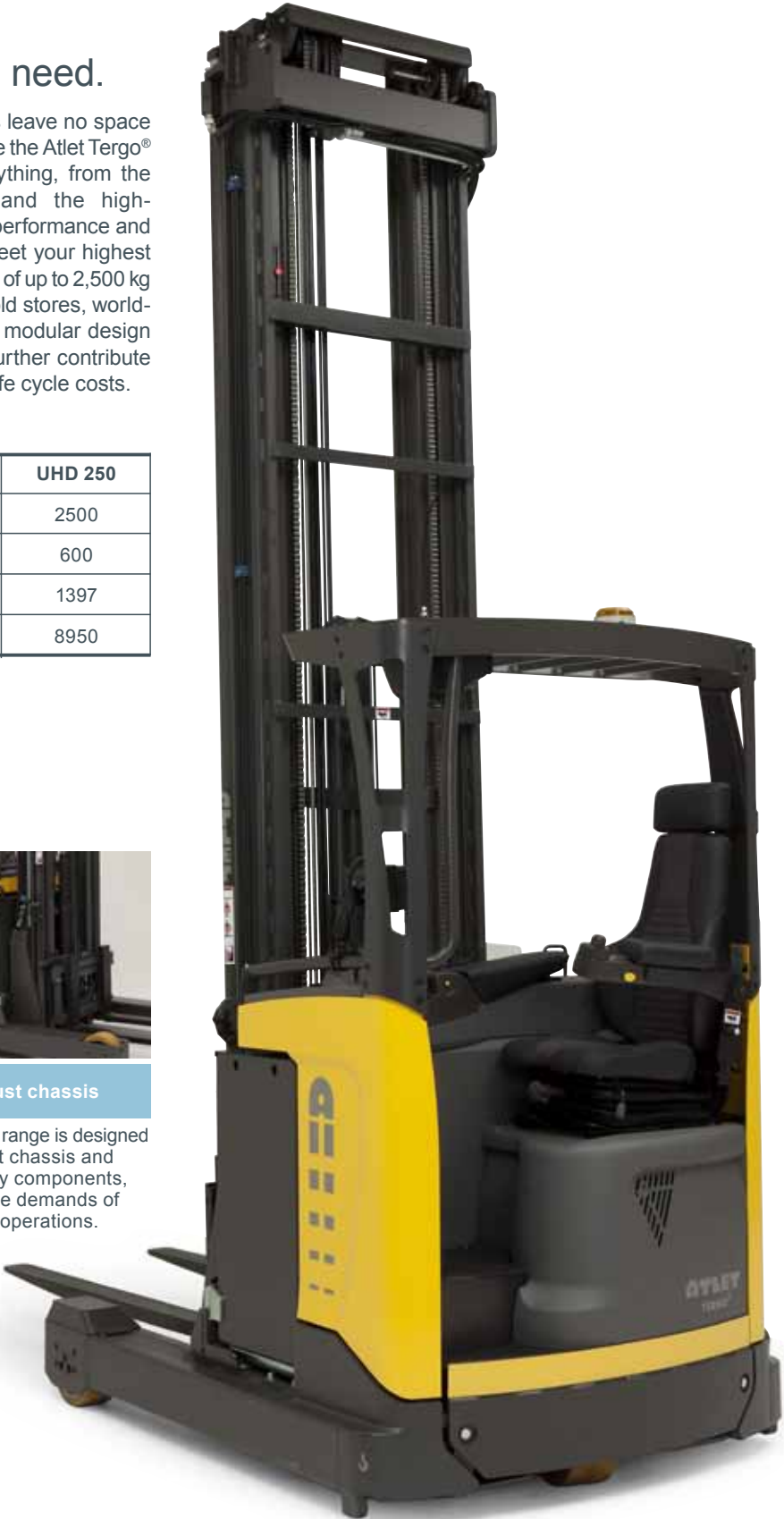
> Durable drive wheel

New drive wheel with unique tread design and larger diameter for increased grip and durability. Easy access for quick and efficient changes, reducing costs and maximising uptime.



> Robust chassis

Atlet Tergo range is designed with robust chassis and high quality components, meeting the demands of multi-shift operations.



Tergo[®] UHX

Reaching for stardom, fame and
fortune – in a warehouse near you.



It takes something special to reach the highest levels. Or to be precise: the Tergo[®] UHX. With its high lifting capacity, the UHX is an extremely capable partner in the most demanding hi-rack warehousing. Sturdy chassis design and supreme stability contribute to star quality efficiency. This is performance, ergonomics and reliability without compromises – equipped for your productivity.

	Tergo UHX 200
Rated lift capacity, kg	2000
Load centre, mm	600
Truck width, mm	1397
Lift height max, mm	12100



> High-level vision

Designed for optimum safety and vision, the roof guard bars and side pillars are painted in a non-reflective dark colour and angled to maximise all-round visibility.



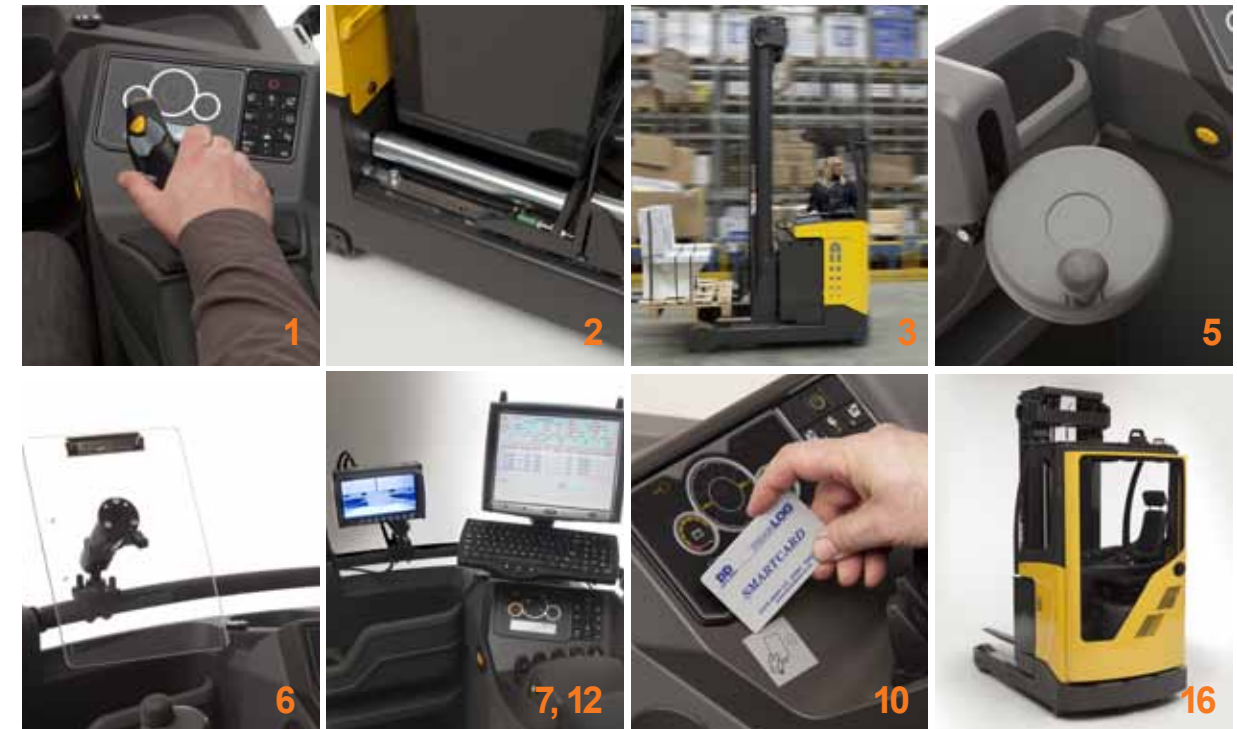
> Up to 12.1 metres

Supreme performance and stable mast design allows safe lifting of up to 12.1 metres.



How personal do you want to be?

We designed the world's most personal reach trucks to help the operator perform optimally. And to make your Atlet Tergo even more you, there's a wide range of specially designed options and accessories. So whatever the needs of your operations, there's an Atlet reach truck that's 100% you. Want more Tergo options? Please visit www.newtergo.com



Atlet Tergo® options:

1. Ergologic

Further enhancing efficiency and ergonomics, this unique multi-functional joystick activates seven different functions, including lifting, lowering, reaching and tilting with one grip using the same control. Ergonomic of course, and very logical.

2. Battery change technology

Simple battery inspection can be achieved without the operator having to leave the truck. Optional steel rollers allow battery change to be carried out from both sides of the truck. For intensive operations, the "Fast track powerbed" system with motor powered steel rollers provides battery change in one minute.

3. High performance 14.5 km/h

Making Atlet Tergo a very fast reach truck, this performance package enhances top speed by 16% – from standard 12.5 km/h to 14.5 km/h.

4. 360° steering

If you prefer the endless 360° steering system, the Tergo® has this optional feature. By using the personal PIN code, the 180/360° steering functionality is your individual choice.

5. Midi steering wheel

If you prefer the midi steering wheel, it is placed to fit perfectly in your left hand. Positional adjustability of the wheel combined with the tilt function provides maximum flexibility.

6. Writing desk

Conveniently mounted on the included equipment bar, the writing desk brings order to the on-board office.

7. Equipment bar

For all extra equipment we offer many alternatives. Adjustable RAM holders in different lengths for the computer keyboard, display and scanner, which can be placed not only on the equipment bar, but also on the instep handle. It's all about your own preferences.

8. 12V power outlet

Power outlet for the extra equipment or just for charging your mobile phone.

9. Weight indicator

The display provides a load weight indicator and there is also a function for adding multiple weights of up to 100,000 kg.

10. Smart Start

Eliminate the PIN code start-up process by using the touch-free Smart Start system. When using different Tergo® trucks, just bring your personal Smart Start key; the truck will recognise you and your personal performance settings.

11. Load wheel brakes

Braking with all three wheels improves safety, especially on floors with low friction, for example cold stores. Load wheel brakes are standard on the UHD250.

12. Video camera and monitor

Improve safety and handling efficiency with the high quality camera and video monitor. The monitor is mounted in the overhead guard and the camera is mounted in the fork as standard.

13. Level Assistance System, LAS

The unique LAS intuitively and automatically finds the storage level. It is useful to always be at the exact fork height, providing major improvements in handling efficiency and safety.

14. Active Spin Reduction, ASR

Loss of drive wheel grip with a reach truck means big risks for the driver, but also for all persons in the surrounding areas. With patent pending ASR on your Tergo® reach truck the safety improves and drive wheel wear is reduced providing additional cost savings.

15. Cold store design (–35°C)

Cold store design includes a wide range of modifications for durability and maximum uptime in these conditions.

16. Cold store cabin

The Tergo® Cold store cabin is designed to please even the most demanding operator. The wide clear entry, spacious cabin, and large windows in the sides and in the overhead guard, together with an efficient ventilator and heater, ensure a climate controlled by the operator, providing maximum performance and comfort throughout the whole shift.

17. Heated seat

Adding to comfort, a stepless thermostat regulated electric heating system is available for the seating and backrest surfaces. Choose between fabric and PVC covered seat, depending on your environment.