

W330/W440 SERIES

BUILT FOR PERFORMANCE, FITTED FOR COMFORT



JOHN DEERE

NOTHING RUNS LIKE A DEERE

BUILT FOR PERFORMANCE, FITTED FOR COMFORT

GET THE JOB DONE FAST, WHEN YOU DECIDE –
AND DO IT IN COMFORT AND STYLE



We don't need to tell you – harvesting can be pretty intense work. So you need to be as comfortable as possible. Step aboard and discover your superlative, all-new, working environment.



The cab is one of the largest in its class. Notice how quiet it is, and the excellent views to the header and the grain tank.

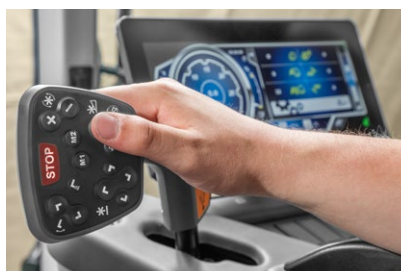


CONTENTS

Factory	4
Overview	6
Harvest Promise	8
Headers	10
Threshing system W330 PTC and W440 PTC	14
Threshing system W440	16
Cleaning shoe	18
Active tailings return	19
Grain tank	20
Chopper	24
Cab	26
Cab controls	28
New ATU 300 Guidance System	33
Engine and transmission	34
Maintenance	36
Specifications	38
Header Compatibility, Dimensions	39



The touchscreen display offers two configurable views to personalise the controls as desired.



The new joystick with its 45 degree design enables you to rest your hand on top while still being able to control the combine's functions.

COMPACT PERFORMANCE THROUGH PRECISION

Here's why compact W330/W440 combines deliver such clean grain with minimal loss while working at high speed: excellent design and high-precision engineering. Join us at our manufacturing facility to see how it's done.

Precision is an understatement! For example, our laser-cutting tools cut components to within 0.000001 mm. Nearly two-thirds of components are manufactured in-house, subject to rigorous quality standards. Welding is done by robots to within 0.08 mm accuracy – the width of a human hair.



***"I WILL NEVER PUT MY
NAME TO A PRODUCT THAT
DOES NOT HAVE IN IT THE
BEST IN ME."***

JOHN DEERE
GRAND DETOUR ILLINOIS, 1837

QUALITY PROCESS IMPLEMENTATION

Every machine must earn the right to bear those prestigious John Deere logo decals! Testing at the end of the assembly line lasts two hours; every machine is given a 1-hour extended ride and drive testing on the factory yard, checking each and every function. Every machine must pass a final verification before shipping.



Every combine is custom-built for individual customers with plenty of options. The build card notes all the options and parts needed.



STATE-OF-THE-ART ASSEMBLY

In 2014 we introduced an entirely new production line, using the latest production techniques and implementing the JDS-G233 quality audit with first-pass yield, on-the-line and end-of-line testing.



Our workforce is trained to world-class standards. All production workers undertake a minimum three years' education.

HIGH-END TECHNOLOGY AND COMFORT IN A COMPACT FORMAT

John Deere has made owning these combines a rewarding experience. They have an appealing modern design on the outside, and offer stress-free and intuitive control of the powerful threshing and separation components.

Whether you choose the W330 or W440 model, you're sure to have a combine you can be proud of. These lightweight machines deliver heavyweight performance within a compact format which allows the fitting of wider tyres, minimising soil compaction. Their compact dimensions are ideal for working in small fields and narrow lanes.

NEW CAB

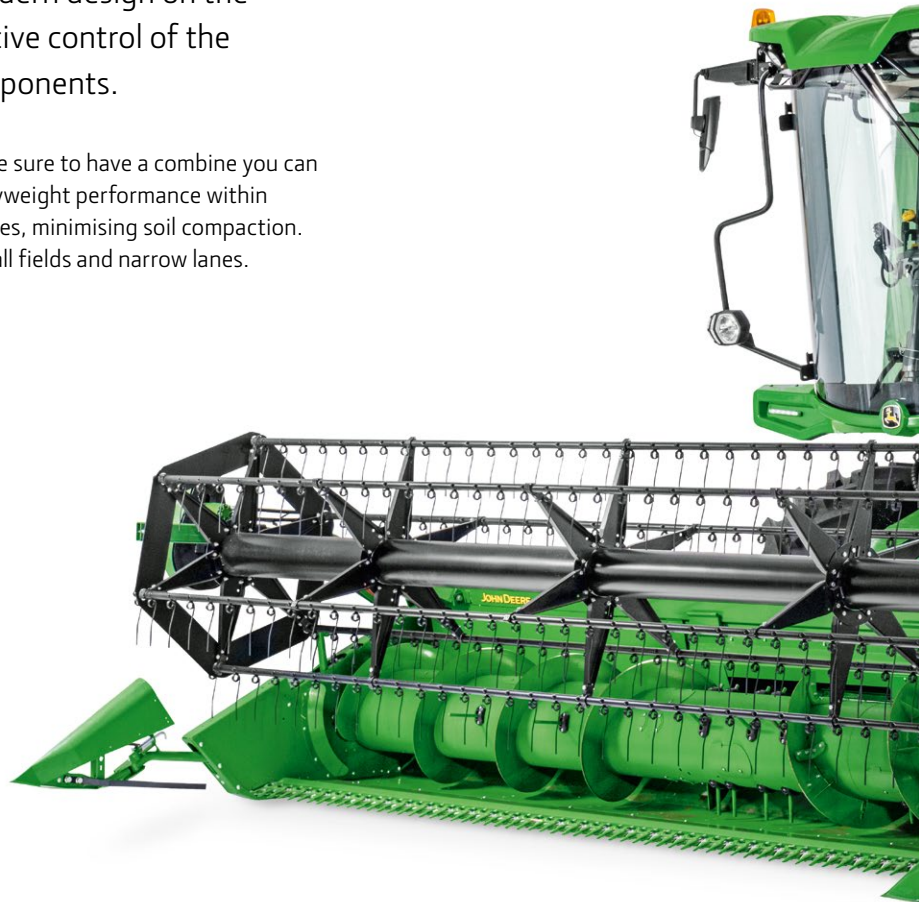
With 3.30 m³ this is one of the largest cabs on the market, and with 73 dB(A) one of the quietest.

NEW TOUCHSCREEN DISPLAY AND JOYSTICK

Automotive style 8:3 display with two configurable views. The new 45 degree angled joystick allows the hand to rest on top.

NEW FEEDERHOUSE

Lateral header tilt, multi-coupler and powerful hydraulic reverser.



MODEL	RATED POWER KW/HP/PS	PRE-THRESHING CYLINDER DIAMETER	NUMBER WALKERS
W330 PTC	150/201/204	400 mm	5
W440	175/234/238	–	6
W440 PTC	175/234/238	400 mm	6

EASY SERVICE AND MAINTENANCE

Unique possibilities to remove components on the machine in no time, enabling easy access for cleaning and maintenance.

FAST UNLOADING

Empty the large grain tanks in record time and maximise time in the field with up to 100 L/sec unloading rate.

COMPACT SIZE

The narrow body dimensions enable a transport width down to 3 m. The short wheelbase ensures a tight turning circle.



PRE-THRESHING CYLINDER (PTC)

20% more capacity due to the pre-threshing effect and large separation areas.

LARGE THRESHING DRUM AND SEPARATION AREA

The 500 mm threshing drum with 8 rasp bars gently treats the grain and straw. The large concave area ensures top separation results.

LARGE WALKER AND CLEANING SHOE AREA

Optimum separation on walkers and sieves thanks to large areas with effective separation.

ACTIVE TAILINGS SYSTEM

A separate re-thresher takes care of the tailings and increases the threshing capacity while maintaining a narrow transport width.

HARVEST PROMISE

BACK-UP WHEN YOU NEED IT. GUARANTEED

Hour after hour. Day after day. You cannot afford to stop during the harvest. That's why we've created Harvest Promise – the most comprehensive support package in farming. We promise to get any parts you need within 24 hours of placing your order. If we fail and your combine can't harvest, we'll provide you a back-up machine for free to keep you moving. It's that simple. There is no small print or complicated exclusions either. We are there for you:

**EXPERT-CHECKED
COMBINES UP TO 7 YEARS
OLD ARE COVERED**



EXPERT CHECK

The Expert Check is your way to get your combine ready for the next harvest season. Our specially trained and certified Inspection Experts know which components require special attention – thanks to John Deere's sophisticated tools based on expertise from thousands of harvests.



24 HOUR PARTS PROMISE

You cannot afford to stop during the harvest. That's why we've invested in the biggest inventory in the agricultural business. And with more machines in the field than any other, we hold more parts stock than anyone else. It all means we consistently deliver more than 97% of all orders within 24 hours. So whatever the challenge, you can rely on us to keep you moving.



BACK-UP MACHINE*

We will provide a backup machine if parts are delivered too late. There is no complicated paperwork required. We'll take care of everything. What makes a difference is that we are not just paying a contractor. We physically have combines in the right amount and the right size on reserve at the dealership to deliver on our promise if needed.

100% ORIGINAL JOHN DEERE PARTS

Your John Deere combine will be repaired by us, as certified John Deere combine dealers using genuine John Deere parts, ensuring optimum performance.



TRAINING

Certified dealers deliver professional operator training carried out by factory-trained experts. This training is offered year after year to refresh their knowledge season-by-season.



EXPERTS IN PLACE

Certified dealers have full-time harvesting experts in place on the sales and service side. Factory-trained experts set up your combine prior to the season and visit you in the season to make sure your machine is always running at the optimum performance level.



USED COMBINES: PREMIUM INSPECTED*

All Premium Inspected combines have received the Expert Check. All necessary repairs are executed using original John Deere quality parts to ensure your harvesting success. A used equipment warranty is available for expert-checked combines as well.

*Available at participating dealerships.

SMOOTH AND EASY FEEDING

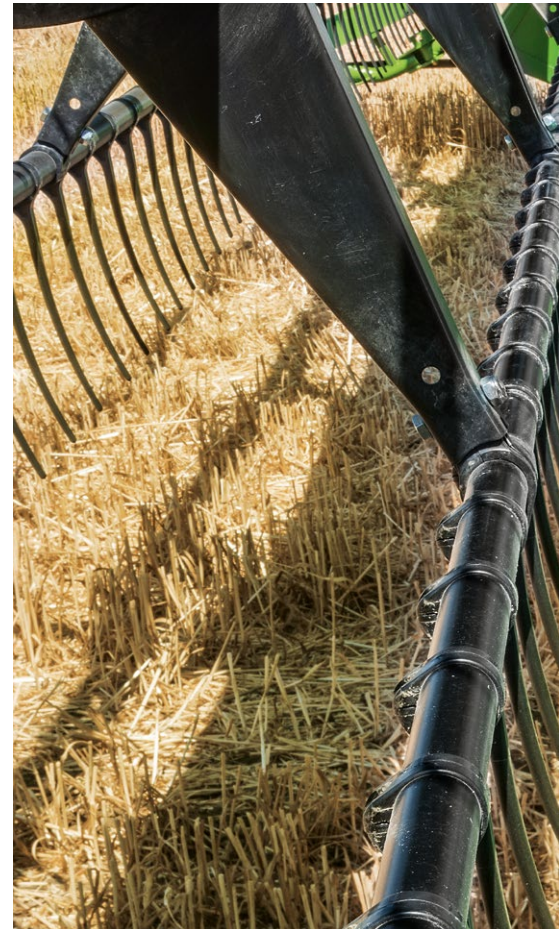
HANDLE A WIDE RANGE OF CROPS WITH EASE

Our W330 and W440 Series combines are available with multiple header options to handle a wide range of crops with ease. All headers feature on the left side a PTO drive and a multicoupler. This enables a fast, single point latching of all electronic and hydraulic functions.



600R

The 600R headers available on the W440 and W440 PTC offer a 660 mm large diameter auger capable of evenly feeding crop over the whole cutting width thanks to fingers mounted across the entire width of the auger. Stainless steel feed plates are very smooth and prevent crop from sticking in front of the auger. The header is extendable in 3 positions to match different crop heights. The linear knife drive transmission stands for less vibration and wear, and cuts with 1,000 strokes per minute perfectly, even in weedy conditions.



300R

The 300R header is designed to fit in terms of weight and dimension to the W330. Multiple features derived from the 600R result in a perfect crop flow and comfortable operation. Purpose-built header trailers are available to facilitate fast field-to-field changeovers and your John Deere dealer can also supply a variety of alternative header solutions like variable headers,

foldable headers, corn and sunflower headers, or attachments like rapeseed extensions and side knives.

READY FOR EVERYTHING

On both 300R and 600R, optional foldable crop dividers make transport very easy and a spare knife can be fitted to keep you going when time is money. Optional crop lifters can be easily stored on the rear of the header. Any stubborn

blockages in the header or feederhouse can be quickly removed by activating the powerful hydraulic reverser via the in-cab button. To protect the threshing cylinder from undesirable stone ingress, a large stone trap is in place, which can be easily emptied.



600PF

The 600PF PremiumFlow features active transport of the material from the cutterbar to the feed auger, resulting in constant flow of the material so the combine can run close to its maximum capacity. In tough conditions, like laid cereals, material is actively and evenly delivered by the belt without any accumulation of material in front.

If crop is standing on one side of the header and lying on the right side, the operator has to move it in with the reel inside the machine, which causes a lot of crop loss. The belts of the Premium Flow actively gather in more crop and there is no need to adjust any table length. Even short material, like malting-barley or down crop, is transferred in a constant flow to the auger.

Crop conversion can be done very quickly, from rapeseed to small grain as well, as there is no need for a rapeseed table. The distance between the cutter bar and the feeding auger is 1,000 mm – in rapeseed the use of the reel is kept to a minimum thanks to the active feeding of the belt, resulting in lower losses while all the crop is captured.

EXCELLENT HEIGHT CONTROL

MULTIPLE OPTIONS FOR FOLLOWING GROUND CONTOURS

Height control protects headers, reduces bulldozing soil and downtime, leaves even stubble on the ground, and makes the job easier for the operator.



Ground contour-following options:

MANUAL HEADER CONTROL

Manual header control offered on the W330 PTC lets the operator keep full control over the cutting height and is, in many instances fully sufficient, especially with smaller header sizes.

DISTANCE HEIGHT CONTROL (DHC)

Distance Height Control (DHC) on the W330 PTC offers two header positions which can be saved on the joystick to resume to a stored working position very quickly. Sensors underneath the cutting platform sense the height of the header. The feederhouse lift cylinders then raise or lower the header automatically.

AUTOMATIC HEIGHT CONTROL (AHC)

Automatic Height Control (AHC) is an option on the W330 PTC and base equipment on the W440/W440 PTC. Sensors follow the ground contours but in addition to the feederhouse lift cylinder, the header can tilt laterally left and right, controlled by an additional cylinder on the side of the feederhouse.

LARGE SERVICE DOORS

Two large service doors provide access to the conveyor chain and the threshing cylinder. On the PTC-equipped combines, the service doors provide access to the PTC drum.



CONVEYOR CHAIN AND FRONT DRUM

The heavy duty U-slat conveyor chain runs on an open-design front drum, so the bolted feeder chain slats cannot be damaged by a foreign object entering the feederhouse. Instead, it will be caught by the stone trap.

All combines are equipped with three chains and two slats to ensure reliable feeding across the entire width. The chain tension and position of the front drum are adjustable from the side of the feederhouse.



MORE CAPACITY

On the W330 three lift cylinders are in base to lift chopping corn heads up to four rows wide.

CHOICE OF HEADERS



W330 HEADER

314R Series	4.20 m
315R Series	4.50 m
316R Series	4.80 m
317R Series	5.10 m



W440/W440 PTC HEADER

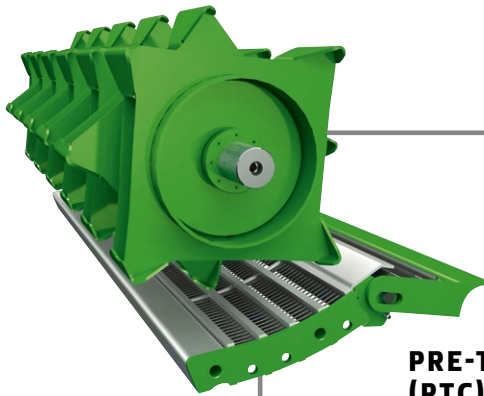
616R Series	4.90 m
618R Series	5.50 m
620R Series	6.10 m
622R Series	6.70 m
618PF Series	5.50 m

PRE-THRESHING SYSTEM (PTC)

PRE-THRESHING BOOSTS PERFORMANCE

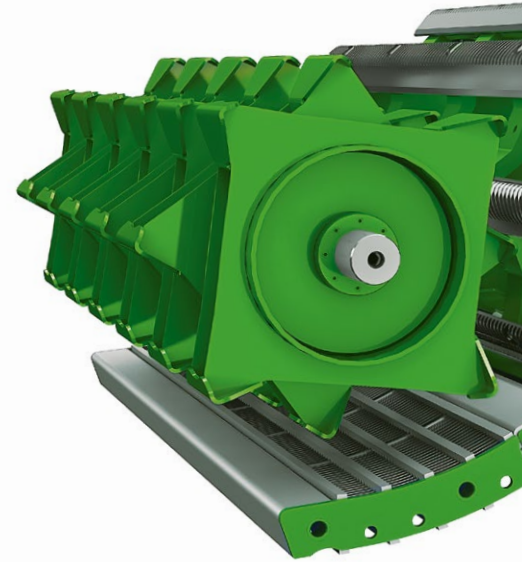
Available for both the 5 and 6-walker threshing systems, the PTC delivers a performance increase of up to 20%, and is especially effective in hard-to-thresh conditions.

At the same it is gentle on the grain thanks to the smooth paddle design on the PTC, while the large active separation area of 0.85 m² on the W330 PTC and 1.03 m² on the W440 PTC provides ample separation performance.



PRE-THRESHING CYLINDER (PTC)

Our pre-threshing cylinder (PTC) brings a big advantage, especially in tough high-yielding conditions. The reduced angle between feederhouse and threshing concave accelerates, pre-threshes and smooths the crop flow to improve separation. Grain quality is assured by the paddle design. The load on the main concave is reduced, resulting in up to 20% performance increase.



THRESHING CYLINDER

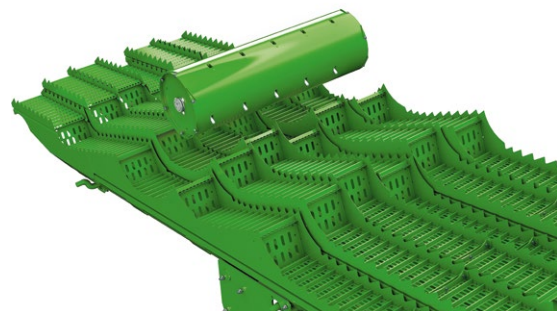
The large, 8-rasp bar threshing cylinder with 500 mm diameter provides excellent grain quality and gentle material handling. The clearance to front and rear concaves can be adjusted independently of each other electronically from the cab to optimise straw quality and minimise grain damage while achieving excellent throughput in the field. Small grain or universal concaves for small grain, corn and beans are available.

ADJUSTABLE POWER SEPARATOR

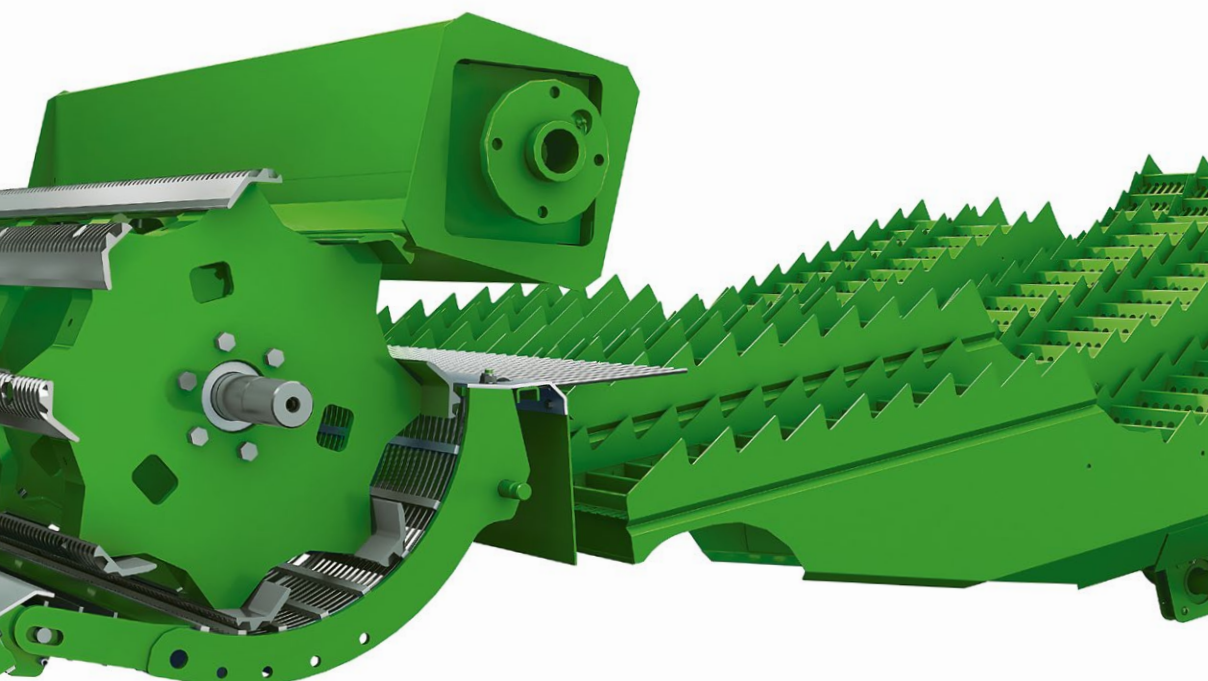
The Power Separator improves separation in the rear part of the walkers. It turns faster than the crop mat moves rearward, thus stretching the crop material so trapped grain is released, improving separation in certain harvesting conditions. The adjustable finger timing allows you to adapt work intensity to the present conditions.

LARGE WALKER AREA

The walker concept offers a large 4.80 m² walker area on the W330 PTC and 6.30 m² on the W440 and 440 PTC. The 100 mm high throw and four 18 cm steep steps ensure effective separation of trapped grains.



Additional holes in the vertical walker areas increase separation.



REAR BEATER

The large 350 mm diameter rear beater strips the threshed straw mat from the cylinder/concave, slows it down and transitions it to the straw walkers. It provides consistent material flow. Below the rear beater a finger rake collects free grains.

EXCLUSIVE STAINLESS STEEL RETURN PANS

Separated material is returned from the walker to the cleaning shoe by return pans. Thanks to the smooth stainless steel surface the material returns safely to the front. The return pans prevent the air coming from the cleaning shoe fan from going into the walkers and disturbing separation. The pans can be easily removed through the rear of the straw hood for cleaning.

THRESHING SYSTEM W440

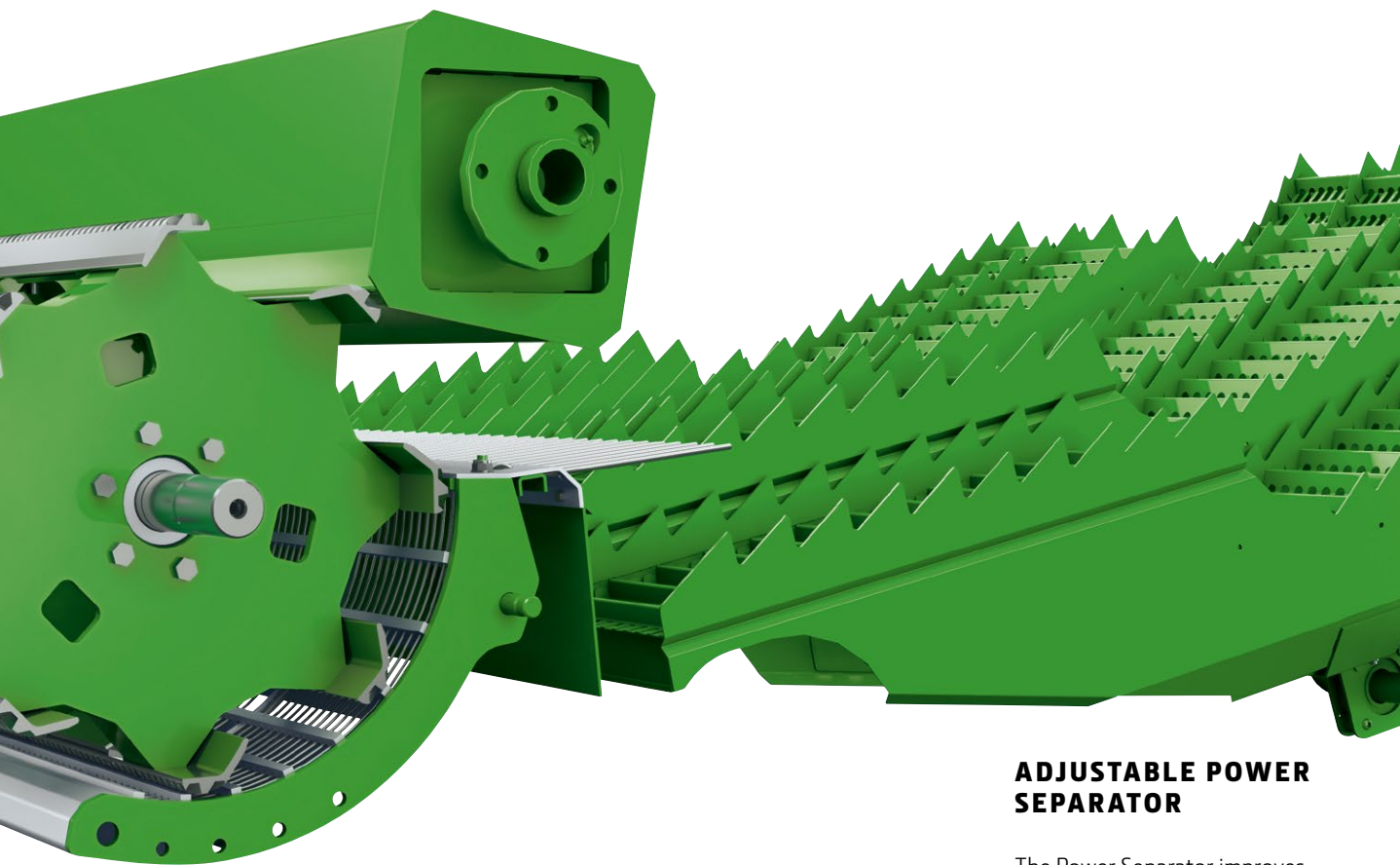
DELIVERING EXCELLENT GRAIN QUALITY

The W440 threshing system features a large 500 mm threshing drum with 8 rasp bars. Grain and straw quality is preserved very well thanks to the gentle treatment of the crop.



THRESHING CYLINDER

Three rasp bars are permanently engaged in the concave, which increases the rubbing effect and ensures careful threshing. The clearance to front and rear concaves can be adjusted, independently of each other, from the cab.



REAR BEATER

The large 350 mm diameter rear beater strips the threshed straw mat from the cylinder/concave, slows it down and transitions it to the straw walkers. It provides consistent material flow. Below the rear beater, a finger rake collects free grains.

EXCLUSIVE STAINLESS STEEL RETURN PANS

Separated material is returned from the walker to the cleaning shoe by return pans. Thanks to the smooth surface, the material returns safely to the front. The return pans prevent the air coming from the cleaning shoe fan going into the walkers and disturbing separation. The pans can be easily removed through the rear of the straw hood for cleaning.

ADJUSTABLE POWER SEPARATOR

The Power Separator improves separation in the rear part of the walkers. It turns faster than the crop mat is moving rearward, thus stretching and thinning the crop material so that trapped grain is released, improving separation in tough conditions. The adjustable finger timing allows you to adapt work intensity to the present conditions.

LARGE WALKER AREA

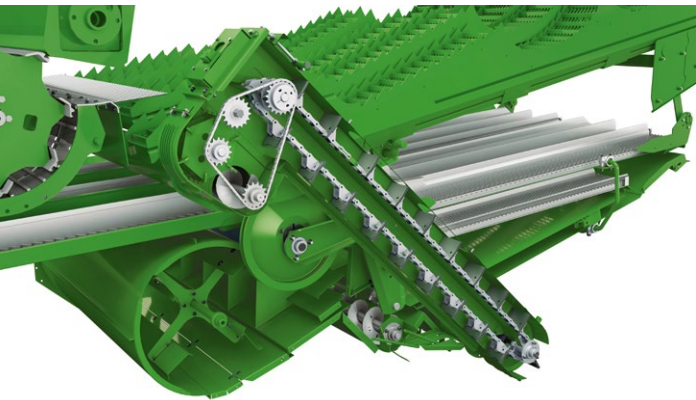
The walker concept offers a large 4.80 m² walker area on the W330 PTC and 6.30 m² on the W440 and 440 PTC. The 100 mm high throw and four 18 cm steep steps ensure effective separation of trapped grains.

CLEANING SHOE

CLEAN SOLUTIONS

Our compact W330 and W440 combines are equipped with the active tailings return system used in large, top-of-the-range combines. Large cleaning shoe areas and multiple adjustment possibilities on chaffer, sieve and fan let you produce grain in seed quality and at low loss levels.

The clean grain elevator features a slip clutch overload protection in base for non-stop operation in corn.

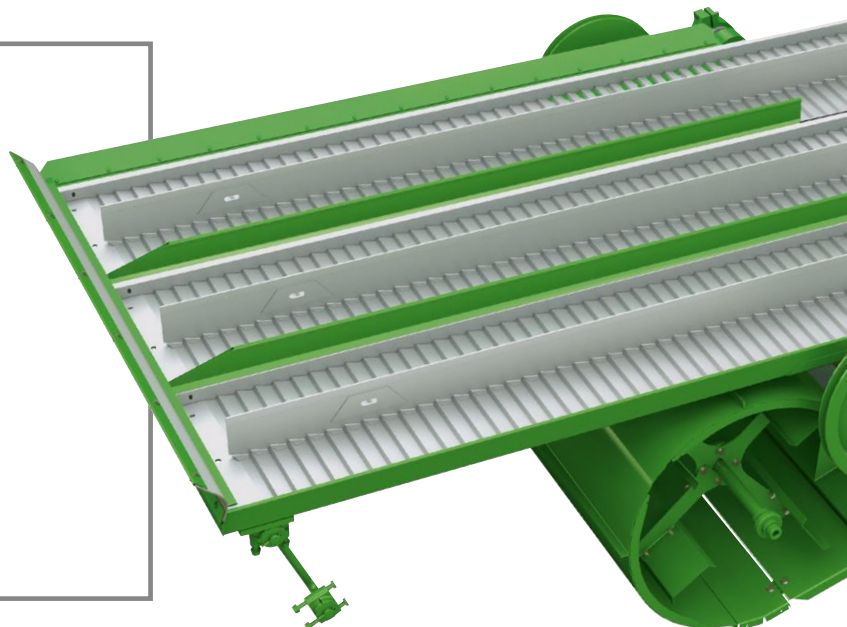


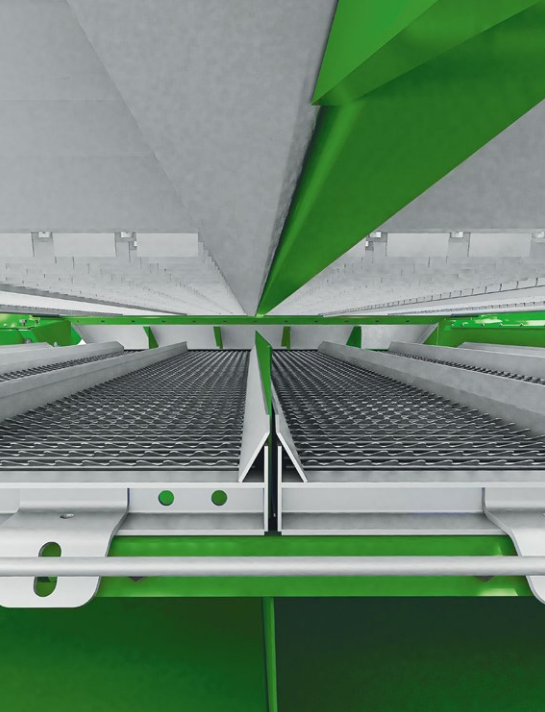
LOW GRAIN LOSS

With a large sieve area (not including finger rakes or step areas) the W330 PTC, W440 and W440 PTC ensure low grain losses, even under high yield conditions. The airflow can be adjusted and directed to the front or the rear of the combine depending on yield and moisture levels. The ventilated 100 mm step between the preparation pan and the chaffer enables effective pre-separation of chaff.

EFFECTIVE HILLSIDE SOLUTIONS

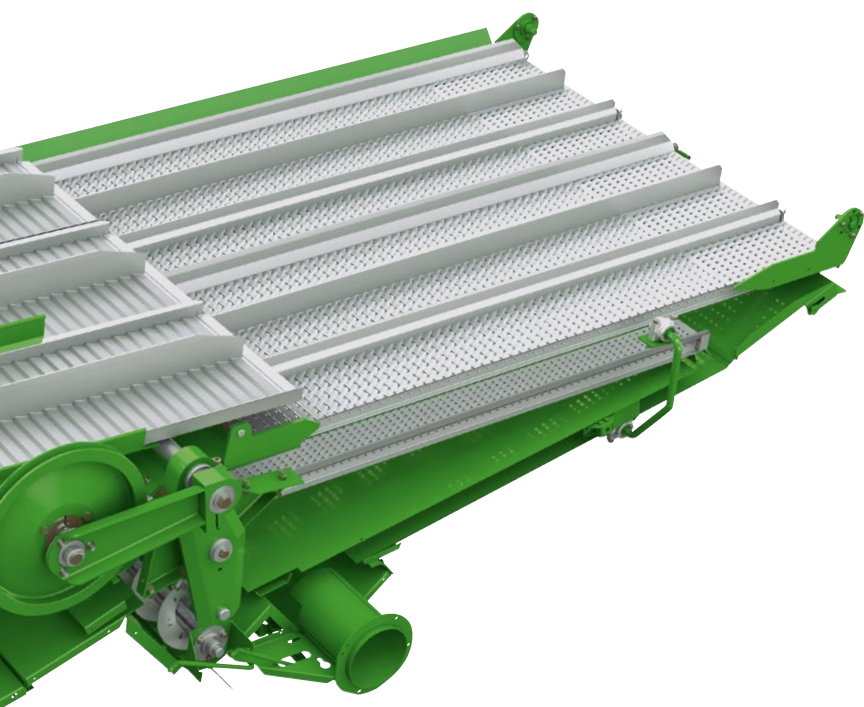
To enhance the cleaning shoe performance in hilly conditions, hillside divider plates can be installed on the preparation pan and chaffer for an effective hillside compensation.





EFFICIENT SIEVING

The sieves prevent short straw particles from making their way into the grain tank while increasing the tolerance range for fewer adjustments to fine-tune sieve performance. The performance of the cleaning shoe is enhanced by the rear chaffer sections. Cleaning shoe performance is enhanced by the rear chaffer sections, which are adjustable for the W440 and 440 PTC. Electronic sieve adjustment on W440 and W440 PTC combines enables further fine tuning from the cab.



ACTIVE TAILINGS RETURN

The active tailings system moves the tailings material into a separate re-thresher. This separate threshing drum with dedicated rasp bars threshes out remaining grains.

At the same time, the overall width of the combine is kept small as there is no elevator between front wheel and main drum. It acts as a performance booster as the main drum is relieved of additional load. The grain is treated very gently inside to ensure perfect grain quality. The tailings volume is displayed on the touchscreen monitor inside the cab. An integrated slip clutch and shaft speed control provide a reliable overload protection.



GRAIN TANKS W440/W440 PTC

LARGE GRAIN TANKS FOR LONGER RUNS

The large, completely enclosed grain tanks hold 6,000 or 7,600 L to enable longer harvesting runs before unloading.

On the W440 and W440 PTC the 100 unloading system is one of the most powerful on the market. This minimises stops at the headland for unloading or ensures fast transfer times during unloading on-the-go for fast logistical processes. On all models the unloading auger swings to a conveniently wide angle, making it easily visible from the cab. The unloading auger is hinged on the top with an unloading height of 4.4 m, which ensures safe unloading even on the highest trailers or trucks without risk of damage to the auger or trailer.



HIGH UNLOADING RATES

The W440 and W440 PTC with 100 L/s unloading rate can empty a full 6,000/7,600 L grain tank in just 60 and 76 seconds respectively.

EASY TO VIEW – AND TO CLEAN

After dark, grain tank lighting provides the operator with a view of the tank via the wide grain tank window in the cab's rear bulkhead. Multiple access doors and a smooth interior (without a lot of corners or flat surfaces) make the tank very easy to clean. The two adjustable sensors report 75% and full tank level.



GRAIN TANK W330

EASY TO CLEAN

The grain tank augers on the W330 PTC can be removed from the outside. That gives unsurpassed possibilities to clean the grain tank.

A GRAIN TANK FOR SEED PRODUCERS

The grain tank is designed to make cleaning easy and to minimise the remaining grain: a shape with few corners, removable bottom augers and only few augers inside the tank.

RIGID UNLOADING AUGER

The W330 PTC unloading auger swings out hydraulically to a fixed and closed position. The auger is hinged in the middle of the grain tank to ensure a good clearance to the grain trailer side wall.

The grain tank extends below the unloading auger and captures grain leaving the auger while folding in the unloading auger and moving it back into the tank. A folding metal shield at the pivot point provides protection from rain, keeping the crop dry.

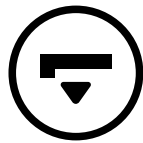
UNLOADING IN 75 SECONDS

Up to 75 L/s unloading speed ensures that the 5,400 L grain tank is emptied in 75 seconds.



ALWAYS IN VIEW

Superb visibility of header and auger is complemented by controls that are grouped to provide intuitive operation.



EASY AND EVEN FILLING

The unloading auger is always within view of the operator to ease filling the trailer. Unloading heights from 4 m on the W330 up to 4.40 m on the W440 and W440 PTC are available to fill large trailers easily and evenly, while minimising the risk of damage.



GRAIN TANK OPENING

While the W330 features mechanically opening grain tank extensions, the grain tank on the W440 and W440 PTC extends out of the cab via electric motors controlled from the cab. The combine can run with the grain tank closed underneath trees or low-hanging electric power lines.



GRAIN TANK ACCESS

Grain tank access for cleanout and maintenance can be done with ease. A large window at the rear of the cab provides an excellent view into the grain tank to check the grain quality.



GRAIN SAMPLING MADE EASY

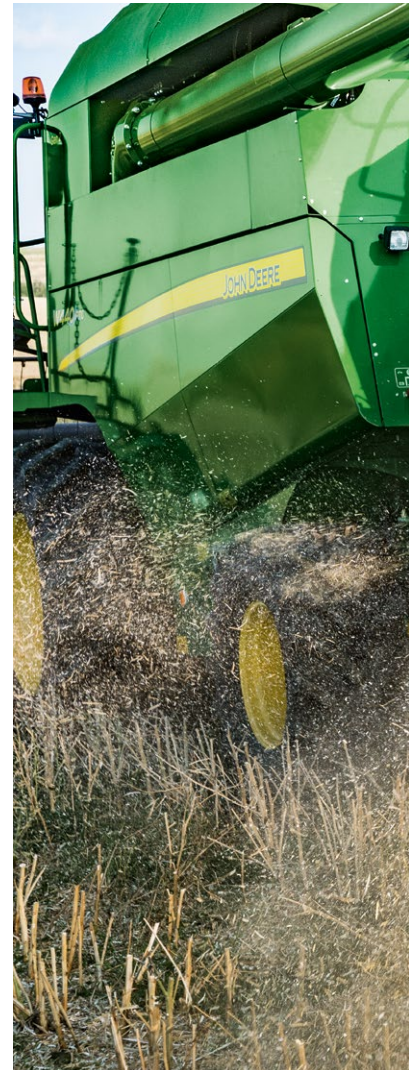
Accessing grain samples for content monitoring on the W440 PTC could not be simpler. It's easy to check the high quality of grain from your John Deere combine via the dedicated access point.

FULL CHOICE OF STRAW CHOPPERS

THREE DIFFERENT CHOPPER OPTIONS

If you mainly chop straw, we offer you up to three different chopper options – seldom found in this size class of combine. As with our larger combines, we also offer a chaffer spreader in this power class to complete our offering.

Our high speed chopper cuts the straw in short and even pieces. The chopper and chaff spreader distribute the material evenly over the whole width of the cutting platform to achieve quick and reliable rotting. In a professional minimum tillage system this eases tillage and seeding work and reduces the risk of disease. All choppers offer the capability to run in corn without restrictions.



	W330 PTC	W440	W440 PTC
Rotating knives	44	52	52
Stationary knives	45	53	53
No chopper	●	●	●
Standard Chopper	●		
High Speed Chopper	●		
High Speed Comfort Chopper	●	●	●

STANDARD CHOPPER

The standard chopper, available only on the W330PTC, offers 44 smooth rotating and 45 fixed counter knives. With 3,300 rpm it cuts fine in lower yields and dry conditions and spreads evenly up to a header width of 4.5 m. To switch from chop mode to drop mode, only one belt needs to be put in the storage position and then the chopper must be swung away to the front. This will not take longer than three minutes.





If you aim to maximise the number of bales of straw per hectare, the smooth threshing and separation concept of the W330 and W440 is made for you.

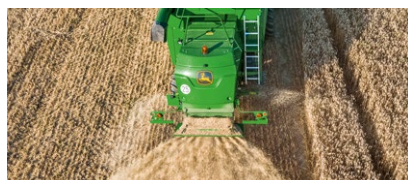


CHAFF SPREADER

The optional hydraulic chaff spreader can be combined with any chopper type for even straw and chaff distribution. This investment may save extra tillage passes to establish the optimum seed bed for the next crop.

The spread width can be adjusted to match the header width. Up to four options exist to distribute the chaff:

- chaff underneath swath to bale it;
- chaff on both sides of the combine for even loss distribution without stripes in the field;
- chaff into swath for more mass to baled (available for high speed chopper);
- chaff distributed through chopper cracking the kernels of the losses so that they do not emerge (available for high speed chopper).



HIGH SPEED CHOPPER

The high speed chopper, available only on the W330PTC, operates at 3,900 rpm. With enlarged bearings and shafts it suits wet and green conditions and higher yields, and spreads to a larger width. A swing-in/swing-out friction plate can be adjusted for variable chopping intensity.



HIGH SPEED COMFORT CHOPPER

The high speed comfort offers two additional features. A lever-operated chop-to-drop door guides the straw into the chopper, eliminating the need to swing the chopper to the front or back position; chopper engagement provides added comfort for operators who frequently swap between chop and drop.

CHOPPER VANE ADJUSTMENT

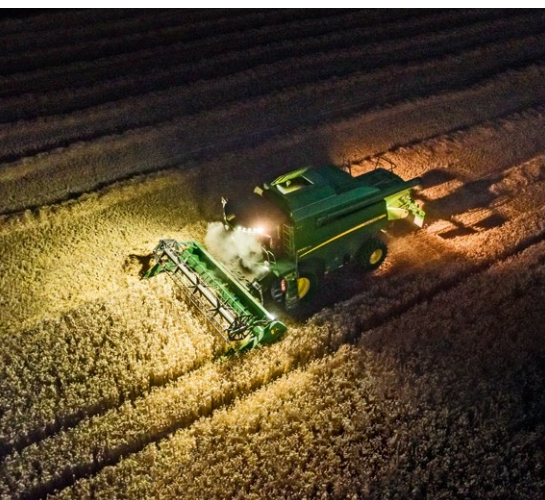
The chopper tailboard vanes can be adjusted manually or electronically from the cab. This allows you to change the spread direction to counteract the influence of side-winds and the spread width to enable an even distribution.

SUPERB COMFORT ALL DAY LONG

THE BEST CAB IN ITS CLASS

With a total volume of 3.30 m³ the cab sets the standard for this size class of combine. We enlarged the cab, especially the rear, to make sure two people can sit next to each other comfortably all day long. The 73 dB(A) noise level also makes it one of the quietest cabs in this size class. The new armrest and hydrohandle have a superb ergonomic design.

During development a customer was recorded using the joystick. This way we understood what challenges he had and we tested every design to guarantee maximum satisfaction. Comfort features like automatic air conditioning with recirculation complete the offering. The foldable passenger seat has comfortable upholstery and when folded down you can use it as a desk.



TURNS NIGHT INTO DAY

Two road transport lights, one in the grain tank, one on the unloading auger, and two on the back of the combine illuminate every corner. One light below each side panel and one in the cleaning shoe help during service and maintenance work.

Eight daylight lights on the cab provide excellent visibility to passing cars, which increases safety on narrow roads. Available as extremely powerful LED lights as an option or halogen lights as base equipment.



THE COOLBOX

The coolbox underneath the passenger seat can hold six 0.33 L bottles. The coolbox can be removed to fill it up at home.



ADJUSTABLE STEERING

The 3-way adjustable steering column allows for optimum adjustment. This enables an excellent view onto the cutting platform in an upright and convenient position.



ACCESS TO THE RIGHT HAND SIDE

The right cab door can be opened and provides convenient and safe access to the platform on the right hand side of the cab to clean windows and mirrors.

THE PNEUMATIC SEAT

The pneumatic seat comes with two armrests as standard and offers suspension to the side and front/back as well as seat heating.



COMFORT OPTIONS

Comfort options are available such as electric mirrors, USB and 12 V connectors enable you to connect your mobile devices.



AUTOMATIC AIR CONDITIONING

Automatic air conditioning is available on top of the powerful manual air conditioning, with stepless fan control and multiple outlets in the roof. 5 air outlets in the roof and 4 outlets on the side enable you to customise the air flow.



STORAGE AREA

A big storage compartment under the seat can host documents such as the operator's instruction manual or invoicing records.

ALL-NEW CONTROL LEVER

HEADER, REEL & AUGER CONTROL AT YOUR FINGERTIPS

A complete new hydrohandle has been ergonomically designed for improved functionality. With this new profile the operator's hand can rest on top of the lever in a convenient position, which results in less operator fatigue even after a long harvest day.



ALL IN ONE HAND

All important combine functions are managed via the hydrohandle: driving speed and direction, cutting platform position and angle, reel position and speed and the unloading auger. Other functions are located on the armrest control console next to the multi-function lever.



CONTROL CONSOLE

- 1 | Electric Rapeseed Knife, left (optional)
- 2 | Electric Rapeseed Knife, right (optional)
- 3 | Header Reverser
- 4 | Header Start/Stop
- 5 | Separator Start/Stop
- 6 | AHC Automatic
- 7 | Height Control (AHC)
- 8 | Automatic Header Control (AHC)
- 9 | Presetting Height
- 10 | USB Connector
- 11 | 12V Electric Outlet
- 12 | Straw Chopper
- 13 | Spread Control
- 14 | Grain Tank Cover Up/Down
- 15 | 4WD Control (optional)
- 16 | Engine Speed Control

- 1 | Header Up/Down
- 2 | Header Tilt Left/Right
- 3 | Header Position 1
- 4 | Header Position 2
- 5 | Reel Up/Down
- 6 | Reel Forward/Backward
- 7 | Reel RPM Increase/Decrease
- 8 | Unloading Auger Folding Out/In
- 9 | Grain Tank Unloading Start/Stop
- 10 | Emergency Stop



- 1 | Main Switch
- 2 | Beacon Light
- 3 | Hazard Lights
- 4 | Working Lights
- 5 | Windscreen Wiper/Washer
- 6 | Road Transport Safety Switch

SETTING THE STANDARD

BEST DISPLAY & EASY ADJUSTMENT

With the new automatic combine setting function, adjustment of the combine gets much easier. To switch from one crop to another the operator just needs to select a crop and confirm it. The combine will automatically set the drum speed, concave clearance, fan speed, chaffer and sieve clearance to the recommended factory settings. This allows the operator to find the optimum adjustments much faster as he already has a very good starting point.

In addition to the 15 factory settings for different crops the operator can also save 30 individual settings, to fit the specific crop conditions of his area or a certain variety. An integrated calculator in the display guides the operator through several steps to determine his loss level. This ensures correct setting of the machine.



COMBINE SETTINGS

The operator can change the combine settings via the display: drum speed, concave clearance, fan speed, chaffer and sieve clearance (if equipped with electrical adjustment).



CAB DISPLAY

The new automotive-style colour touchscreen display sets new standards in the entire combine market. The display aspect ratio of 8:3 enables a dual zone touchscreen which can show key performance and machine information at the same time. Two optional cameras can be ordered and connected to the screen as well to assist e.g. when reversing or connecting a header trailer.

PLENTY OF INFORMATION TO MANAGE YOUR HARVESTING OPERATION MORE EFFECTIVELY:



HARVESTING INFORMATION

The display shows important metrics such as ground speed time, header height, grain tank fill level, and grain losses. Losses are broken down by walker, cleaning shoe losses and the volume of the returns. The size of the kernels (for example rapeseed and wheat) can be adjusted on the monitor to increase the accuracy of the loss measurement system.



ADJUSTMENT OPTIONS

Via the display you can adjust automatic reel speed control in relation to ground speed, threshing cylinder speed, fan speed, concave gap front/rear, upper pre-concave gap and lower sieve gap.



ANTI-BLOCKAGE ALARMS

The operator can set individual alarm-limits for the rpm of each crop-engaging component. If the rpm drops below the limit an alarm sounds and the operator can reduce forward speed. This way the blockage of the combine can be effectively prevented. The following speed alarms can be individually set: reel, feederhouse, PTC drum, main threshing cylinder, straw walker, fan, clean grain elevator, tailing returns.

DISPLAY METRICS THAT ENABLE YOU TO OPTIMISE PERFORMANCE & UPTIME:



DOCUMENTATION FOR ANALYSIS & BILLING

Contractors in particular will appreciate the additional information, which can be used for analysis or billing practices. All data is stored on the display and can be downloaded using a USB stick. Data can be stored according to different clients, fields or jobs.



DATA THAT PUTS YOU IN CONTROL

Analysis of the data helps you to calculate how much time is needed to complete a certain job at a given forward speed while another calculator enables you to determine performance or loss levels. Data includes threshed area, the threshing time used, working hours for engine, header, chopper and threshing system, fuel and DEF usage.



VITAL ENGINE INFORMATION

The engine in particular provides information that is vital to ensure tip-top performance and maximum uptime. Engine-related information at your fingertips includes fuel and DEF tank levels, coolant temperature, engine oil pressure, external temperature, fuel and DEF temperature, turbo charge pressure and air temperature, fuel pressure, engine load percentage, battery voltage, and exhaust temperature.



AUTOTRAC UNIVERSAL 300 (ATU 300)

AUTOMATED STEERING SYSTEM

Our proven automated steering solution, AutoTrac Universal 300, offers you Premium John Deere guidance combined with full flexibility. The ATU 300 unit can be easily transferred from the combine to many other machines in less than 30 minutes. And best, ATU 300 enables operation at only 0.5 km/h, slower than other universal systems.



PREMIUM GUIDANCE

The new AutoTrac Universal 300 steering kit delights with a much quicker line acquisition, reduced noise and a more integrated design.

PACKING PLENTY OF POWER

ENGINE AND TRANSMISSION

These compact combines punch well above their weight. The Stage IV compliant 6-cylinder common rail engine uses the latest Selective Catalyst Reduction (SCR) technology to reduce emissions.

ELECTRONICALLY CONTROLLED ENGINE

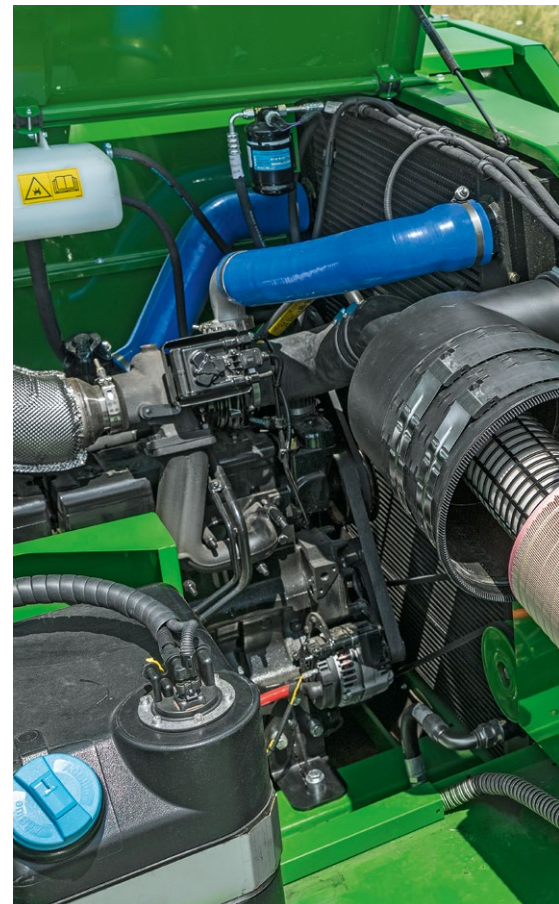
The electronically controlled engine is turbocharged and equipped with an air-to-air charge air cooler for best possible torque and constant rpm.

ALTERNATOR

The 150 Ah alternator provides ample electric power to all electronic components. There is safe, unobstructed access to the large engine compartment, radiator and cooling package. The engine manages to achieve Stage IV without exhaust gas recirculation.

CLEANING

The entire engine compartment is enclosed by an engine cover, which limits the accumulation of dust and dirt at the turbocharger or other hot engine and exhaust system components, and can be opened for maintenance. The airflow around the engine via the cooling fan can be better controlled too which helps keep the engine deck clean.



AIR FILTRATION

Fresh air for the engine is drawn in by the rotating radiator screen to the air filter. Thanks to its pre-separation process, few particles reach the air filter. There is only one large air filter to be cleaned, which means maintenance of the air filter is reduced greatly.

FUEL TANK

The large 350/450 L tank and the 30 L diesel exhaust fluid (DEF) tank enable full autonomy during even the longest working days. The fuel efficiency of the W330 and W440 is excellent thanks to the light weight of the combine and its straightforward design.

LARGE COOLING SYSTEM

The cooling system is combined for the engine, hydraulics and air conditioning. The rotating screen extracts dust continuously to ensure optimal cooling performance and limits the amount of dust building up inside the cooling package. A rotating brush can be fitted as an option to clear off leaves and debris during corn harvest.



3-SPEED TRANSMISSION

Both the W330 and W440 are equipped with a 3-speed fully hydrostatic transmission (top speed up to 25 km/h) and an optional hydrostatic four-wheel drive on the rear axle. The tight turning radius makes small field manoeuvring especially easy.



FRONT AXLE

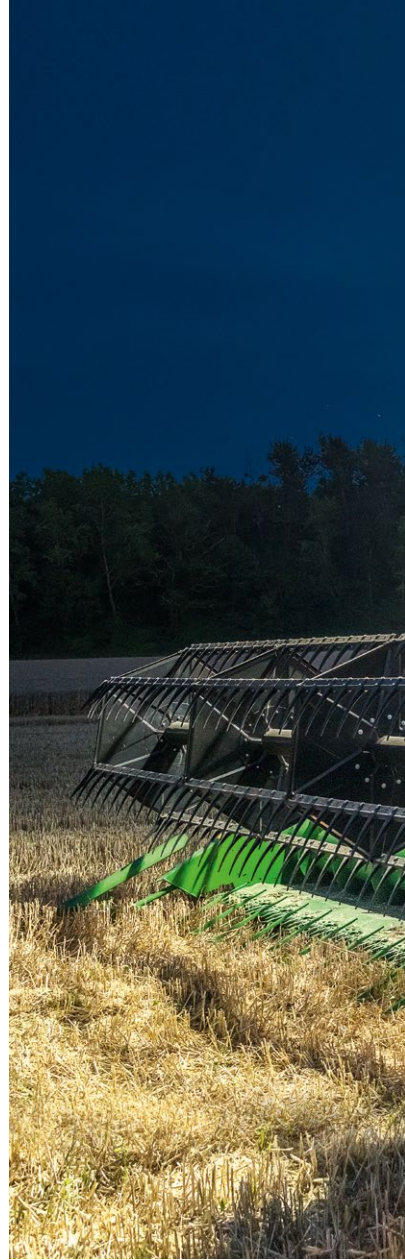
The front axle of all models features disc brakes as standard, which enables safe and comfortable road travel even in hilly conditions or with the header trailer attached.

MASTER OF MAINTENANCE

EASY ACCESS FOR CLEANING

A major advantage of these combines is how easy it is to remove components and get access to the inside. After removing all key components in less than 20 minutes you can see through the entire combine from front to back and from left to right, and inspect every corner.

To maintain round-the-clock productivity, our W330 and W440 combines have 12 V electricity plugs distributed throughout the machine for connecting a handheld work light. A convenient, large storage box provides ample space for a toolbox, grease gun and wear parts. Each combine gets an operator pack delivered by the dealer, consisting of a toolbox fully equipped with quality tools for inspection and maintenance. A comprehensive package of merchandise, including operator clothing, is provided – so you are fully equipped for the harvest season!



FAST SWAP-OUT

Components can be removed and installed in no time at all. This means easier end-of-season cleaning and maintenance. Seed producers will love this, too, as it helps change fields, crops or varieties very rapidly.

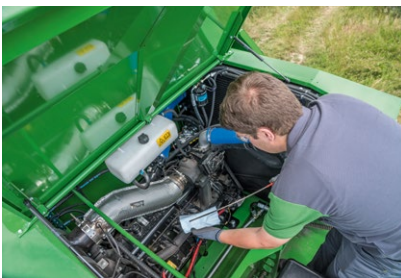
20 ACCESS PONTS

Up to 20 access points enable easy access to all key components. You can remove walker return pans, chaffer, sieves, preparation pans, grain tank bottom augers. Doors provide access to the feeder house, threshing drum, left and right side walls, straw hood etc. On average there are up to 10 more access possibilities compared to other machines on the market. Even better, many require no or few tools.



RADIATOR DOOR

The large radiator door provides easy access to the cooling compartment.



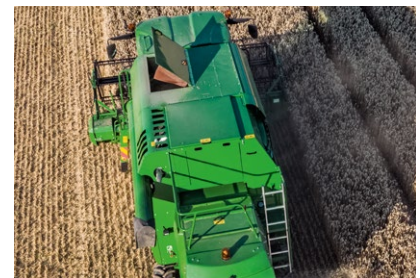
MAXIMISING UPTIME

Uptime equals productivity. Our W330 and W440 combines will work for 600 hours between oil changes and there are only two daily greasing points.



REMOVABLE STAINLESS STEEL WALKER BOTTOMS

Smooth, removable stainless steel walker bottoms do not rust and enable quick and comfortable cleaning.



ENGINE COVER

The engine cover in base equipment guides their flow over the engine to prevent dust gathering in the engine compartment.

SPECIFICATIONS

	W330 PTC	W440	W440 PTC
ENGINE			
Type	6-cylinder, 6.6l engine	6-cylinder, 7.4l engine	6-cylinder, 7.4l engine
Rated power, kw/hp/PS	150/201/204	175/234/238	175/234/238
Max. Power, kw/hp/PS	157/210/215	186/249/253	186/249/253
Emission level	Stage IV	Stage IV	Stage IV
Fuel tank capacity, l	350	450	450
DEF tank capacity, l	30	60	60
DRIVE SYSTEM			
	Hydrostatic ground drive with 3 speed transmission	Hydrostatic ground drive with 3 speed transmission	Hydrostatic ground drive with 3 speed transmission
CAB			
	Heating, ventilation, air conditioning system	Heating, ventilation, air conditioning system	Heating, ventilation, air conditioning system
	Coloured touchscreen Display	Coloured touchscreen Display	Coloured touchscreen Display
	3-way adjustable steering column	3-way adjustable steering column	3-way adjustable steering column
	Air suspended seat	Air suspended seat	Air suspended seat
HEADER			
300R Series, Cutting width, m	4.20, 4.50, 4.80, 5.10	N/A	N/A
600R Series, Cutting width, m	N/A	4.90, 5.50, 6.10, 6.70	4.90, 5.50, 6.10, 6.70
600PF Series, Cutting width, m	N/A	5.50	5.50
Strokes/min	1,020	1,040	1,040
Reverser	Hydraulically	Hydraulically	Hydraulically
300R headers for W330 combines do not fit on W440 combines. The 600R headers for W440 combines do not fit W300 combines.			
FEEDERHOUSE			
Lift cylinders, mm	50 (2 cylinders)	50 (3 cylinders)	50 (3 cylinders)
Number of chains/number bars over the whole width	3/1	3/2	3/2
Dump-type stone trap	Base	Base	Base
Distance Height Control (DHC) saving a headland and a working position	Option	N/A	N/A
Automatic Height Control (AHC), including DHC	Option (height and lateral tilt)	Base	Base
SEPARATION SYSTEM			
Pre-Threshing cylinder diameter, mm	400	-	400
Pre-Threshing cylinder speed range	80% of main cylinder	80% of main cylinder	80% of main cylinder
Threshing drum width, mm	1,110	1,330	1,330
Threshing drum cylinder diameter, mm	500	500	500
Threshing bars, number	8	8	8
Threshing drum speed range, rpm	600 - 1,300 or 400 - 1,150	600 - 1,300 or 400 - 1,150	600 - 1,300 or 400 - 1,150
Concave warp, °	105	105	105
Pre-Threshing cylinder active separation area, m ²	0.34	-	0.41
Main concave active separation area, m ²	0.51	0.62	0.62
Total active separation area, m ²	0.85	0.62	1.03
Fixed speed rear beater diameter, mm	350	350	350
Walkers with removable bottoms, number	5	6	6
Walker area, m ²	4.80	6.30	6.30
Power Separator	Option	Option	Option
GRAIN HANDLING			
Manual adjustable chaffer and sieve	Base	Base	Base
Electrical adjustable chaffer and sieve	-	Option	Option
Cleaning Shoe area, m ²	3.40	4.50	4.50
Cleaning Shoe Hillside Kit	Hillside Kit for cleaning shoe as option available	Hillside Kit for cleaning shoe as option available	Hillside Kit for cleaning shoe as option available
Laser Tailing Monitoring	Base	Base	Base
Grain tank, l	5,400	6,000	7,600
Grain tank extension operation	Manual	Electrical	Electrical
Removable bottom auger	Base	Base	-
Unloading auger hinge position	Bottom	Top	Top
Unloading height, m	4.00	4.40	4.40
Unloading rate, l/sec	75	100	100
LIGHTING SYSTEM			
	4 on-highway headlights	4 on-highway headlights	4 on-highway headlights
Number of working lights	8	9	10
Working light type, base/option	Halogen/LED	Halogen/LED	Halogen/LED
	Cleaning shoe lights	Cleaning shoe lights	Cleaning shoe lights
	Grain tank lights	Grain tank and unloading auger lights	Grain tank and unloading auger lights

HEADER COMPATIBILITY



HEADER 300R	314R	315R	316R	317R
W330	4.20 m	4.50 m	4.80 m	5.10 m
HEADER 600R	616R	618R	620R	622R
W440	4.90 m	5.50 m	6.10 m	6.70 m
W440 PTC	4.90 m	5.50 m	6.10 m	6.70 m
HEADER 600PF	618PF			
W440	5.50 m			
W440 PTC	5.50 m			

DIMENSIONS



	W330 PTC	W440	W440 PTC
Length, m	8.28	8.61	9.03
Height, m	3.65 (depending on tyre size)	3.98 (depending on tyre size)	3.97 (depending on tyre size)
Width, mm			
- with tyres: 600/65 R34	2,998	-	-
- with tyres: 620/70 R38	-	3,298	3,298
- with tyres: 650/65 R38	-	3,398	3,398
- with tyres: 750/65 R26	3,298	-	-
- with tyres: 800/65 R32	-	3,700	3,700
Weight without header and chopper, kg	9,000	10,970	12,290

There's no time for downtime when you're harvesting, so our dealerships are geared to provide you with the best support in the business. They know your operational needs as well as your machines and have received regular in-depth training from John Deere. This expertise, together with the finest parts delivery service in the industry, is what makes your partnership with your John Deere dealer so valuable.

NOTHING RUNS LIKE A DEERE



This literature has been compiled for worldwide circulation. While general information, pictures and descriptions are provided, some illustrations and text may include finance, credit, insurance, product options and accessories not available in all regions. Please contact your local dealer for details. John Deere reserves the right to change specification and design of products described in this literature without notice. The green and yellow colour scheme, the leaping deer logo and the JOHN DEERE word mark are trademarks of Deere & Company.