

WR11

REACH LOADER



Model shown may include optional equipment.

- ***Reach mechanism provides wider working range.***
- ***Parallel linkage keeps work equipment level.***
- ***Adapts to any working conditions.***
- ***A wide variety of work attachments.***

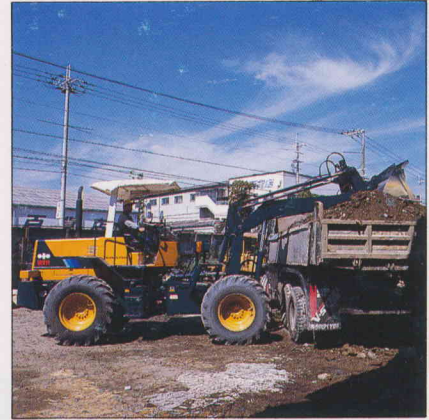
Reach mechanism and parallel linkage for wider applications and higher productivity.



Parallel linkage keeps work equipment level.



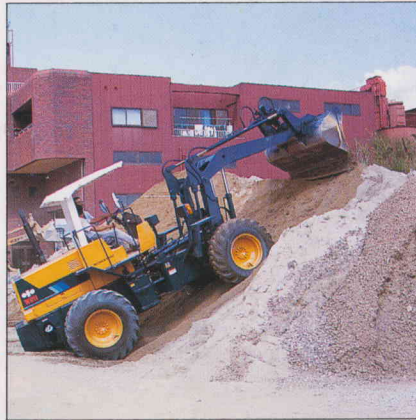
Simple, labor-saving loading and unloading of scrap or industrial waste.



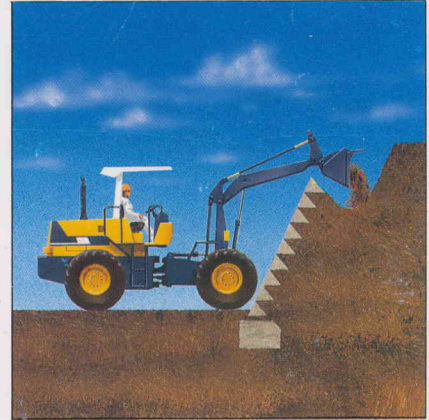
Precise loading to the far end of a dump truck from one side.



Easy sorting of lumber and loading over high truck barriers.



Smoother scooping and dumping in hoppers.



Efficient filling behind retaining walls.

SPECIFICATIONS

Bucket capacity, heaped 1.0 m³ (1.3 cu.yd)
 Operating weight (with Canopy) 8275 kg
 (18,240 lb)
 Overall length 6100 mm (20')
 Overall width (without bucket). 2250 mm (7'5")
 Bucket width..... 2340 mm (7'8")
 Overall height 3085 mm (10'1")
 Ground clearance 400 mm (1'4")
 Wheelbase..... 2865 mm (9'5")
 Tread 1780 mm (5'10")
 Maximum travel speed (Forward/ Reverse)
 33.0/33.5 km/h
 (20.5/20.8 MPH)
 Articulating angle..... 40°

Minimum turning radius
 outside corner of the bucket ..5460 mm (17'11")
 center of outside wheel..... 4880 mm (16')
 Dumping clearance Reach max./Reach min
 3200 mm (10'6")/2695 mm (8'10")
 Dumping reach Reach max./Reach min.
 1460 mm (4'9")/845 mm (2'9")
 Reach range..... 1000 mm (3'3")
 Bucket tilt back angle (on the ground) 58°
 Engine model..... Komatsu 6D95L
 Flywheel horsepower...73 HP (54 kW)/2400 RPM
 Piston displacement 4.89 ltr. (298 cu.in)
 Tire size 16.9-24-10 PR (L-2)

Materials and specifications are subject to change without notice.



ÉQUIPEMENT FÉDÉRAL QUÉBEC LIMITÉE
 CASE POSTALE 1447, SUCC. ST-LAURENT
 ST-LAURENT, QC H4L 4Z1
 VENTES - PIÈCES - SERVICE
 (514) 341-4590 ou sans frais 1-800-361-4412

1 - FEB 1994