

Hiab XS 1055

Capacity 90 tm



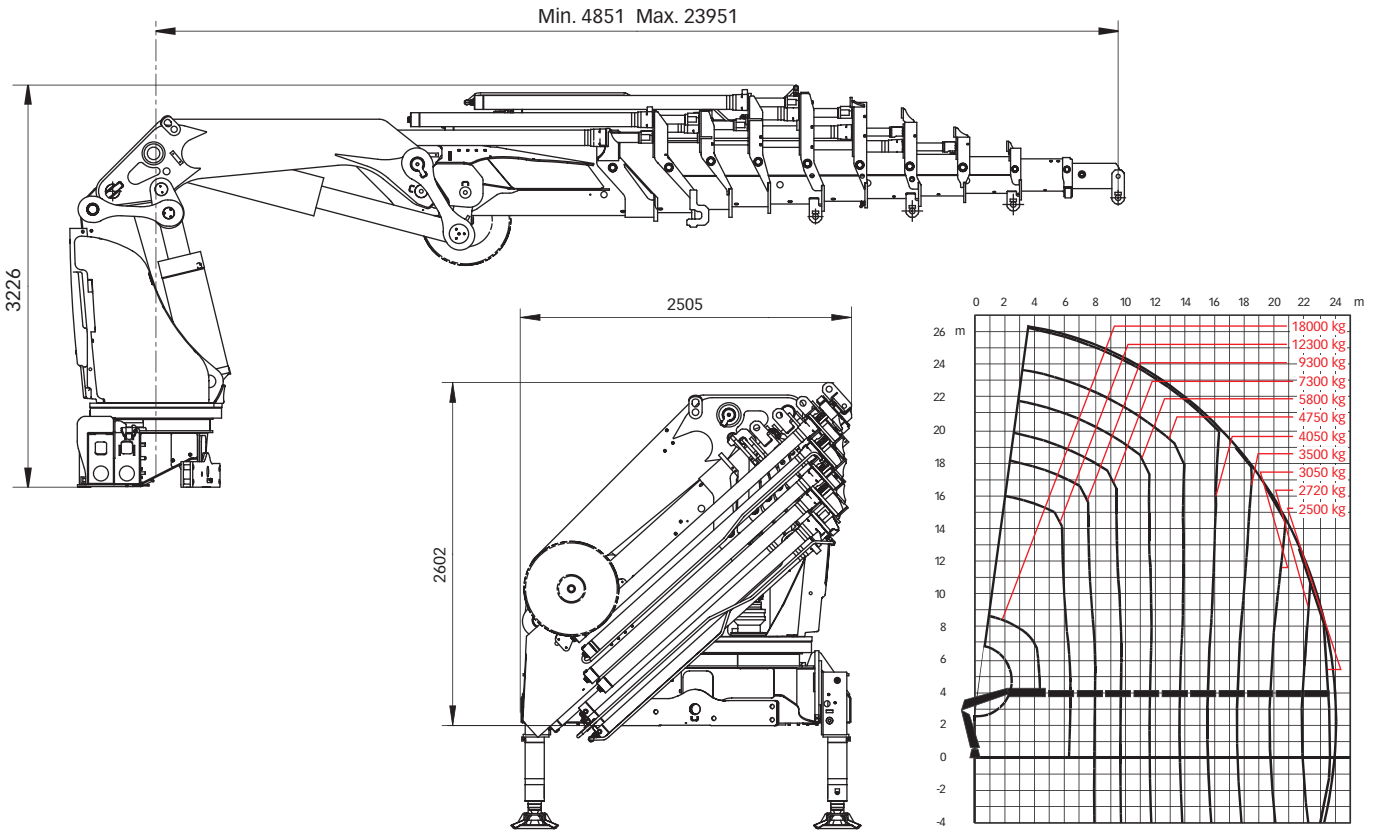
Hiab XS 1055 Basic data

Technical data	EP-6 HiPro	E-6 HiPro	E-8 HiPro*	E-10 HiPro
Max. lifting capacity (kNm)	-	-	-	-
Outreach, hydraulic extensions (m)	16.5	15.3	19.6	24.0
Outreach, manual extensions (m)	-	-	-	-
Outreach, with jib (m)	-	25.0	29.2	-
Outreach / lifting capacity (m / kg)	4.7 / 18000	4.4 / 18000	4.4 / 18000	4.4 / 18000
	6.2 / 13300	5.9 / 13900	6.1 / 13000	6.3 / 12300
	8.0 / 10100	7.6 / 10500	7.8 / 9800	8.0 / 9300
	9.9 / 8000	9.3 / 8400	9.5 / 7800	9.7 / 7300
	11.9 / 6600	11.2 / 6900	11.4 / 6300	11.6 / 5800
	14.1 / 5500	13.2 / 5800	13.4 / 5200	13.6 / 4750
	16.3 / 4750	15.1 / 5000	15.3 / 4450	15.5 / 4050
	-	-	17.4 / 3850	17.6 / 3500
	-	-	19.4 / 3450	19.6 / 3050
	-	-	-	21.8 / 2720
-	-	-	23.8 / 2500	
Outreach / lifting capacity, with jib (m / kg)	-	18.4 / 2920	22.5 / 1780	-
	-	19.4 / 2740	23.5 / 1680	-
	-	20.7 / 2540	24.8 / 1560	-
	-	21.9 / 2320	26.0 / 1480	-
	-	23.4 / 1840	27.5 / 1380	-
	-	24.9 / 1520	29.0 / 1240	-
	-	26.4 / 1280**	30.5 / 1020**	-
Slewing angle	∞	∞	∞	∞
Height in folded position (mm)	2587	2507	2507	2602
Width in folded position (mm)	2504	2500	2500	2505
Installation space needed (mm)	1626	1665	1730	1730
Weight, "standard" crane without stabilizers (kg)	6980	7220	7730	8120
Weight, jib (kg)	-	1390	1370	-
Weight, manual extension for jib (kg)	-	50	50	-
Frame attachments (kg)	-	-	-	-
Weight, stabilizer equipment (kg)	1220 - 1390	1220 - 1390	1220 - 1390	1220 - 1390

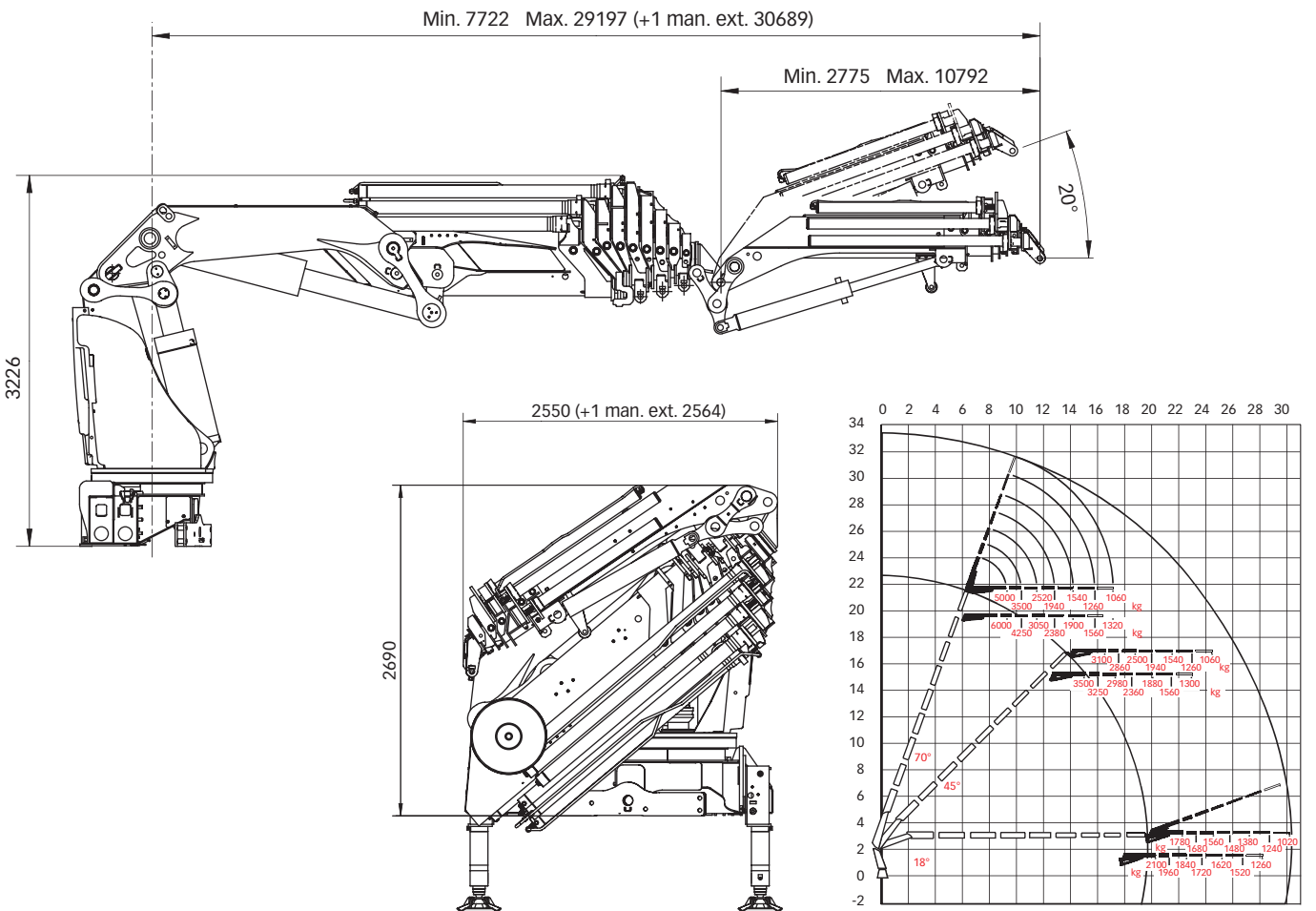
* Jib with Dual Capacity (JDC).

** With Jib + 1 man. extension.

Hiab XS 1055 E-10 HiPro



Hiab XS 1055 E-8 HiPro jib 175X-5 JDC



Disclaimer. Hiab cranes have been built to meet the highest standards of safety and service life and have been thoroughly tested. Strength calculations for this model have been carried out in accordance with EN13001 in fatigue class S0. Cargotec's certified Quality Assurance System complies with ISO 9001. Some of the items in our literature may be extra equipment. Certain applications may require an official permit. We reserve the right to change technical specifications without prior notice. Hiab cranes produced for EU-countries are CE-marked and comply with the European Standard EN 12999.

Cargotec improves the efficiency of cargo flows on land and at sea - wherever cargo is on the move. Cargotec's daughter brands, Hiab, Kalmar and MacGregor are recognised leaders in cargo and load handling solutions around the world. Cargotec's global network is positioned close to customers and offers extensive services that ensure the continuous, reliable and sustainable performance of equipment. www.cargotec.com

